

ANNUAL

Simple Whatnots Club

Collection 7 • Helping Hands

by Kim Diehl

Washtub Garden
32½" x 32½"



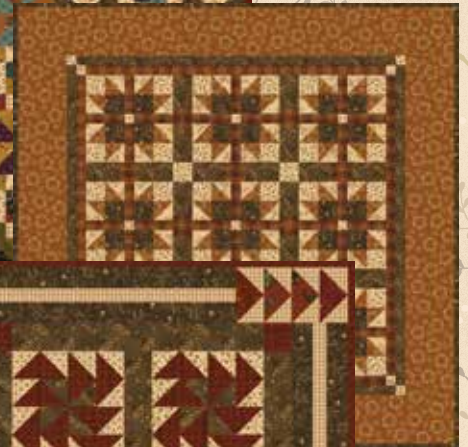
Twirligigs
14½" x 30½"



Chicken Scratch Patch
14½" x 16½"



Woven Stars
23" x 23"



Small Talk
15½" x 15½"

Old Glory
18½" x 28½"



Available
for order by shops
July 2017.
Delivery of fabric
December 2017.



Crackerjack
35½" x 35½"

Cotton Blossoms
24½" x 24½"



Henry Glass & Co., Inc.

Helping Hands Fabrics in the Collection



6874-70



6874-88



6875-33



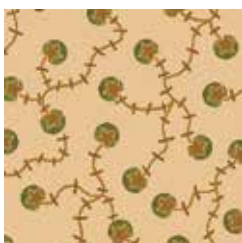
6875-77



6876-66



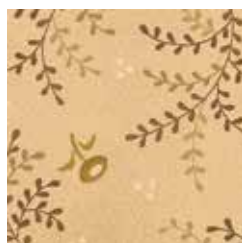
6876-99



6877-44



6878-33



6878-44



6878-88



6879-33



6879-66



6880-11



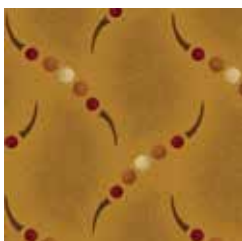
6880-44



6880-55



6881-40



6882-40



6882-88



6883-30



6883-66



6883-99



6884Y-33



6885Y-77



6886Y-66



6887Y-30



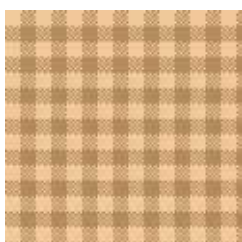
6888Y-33



6889Y-11



6890Y-88



6891Y-44

