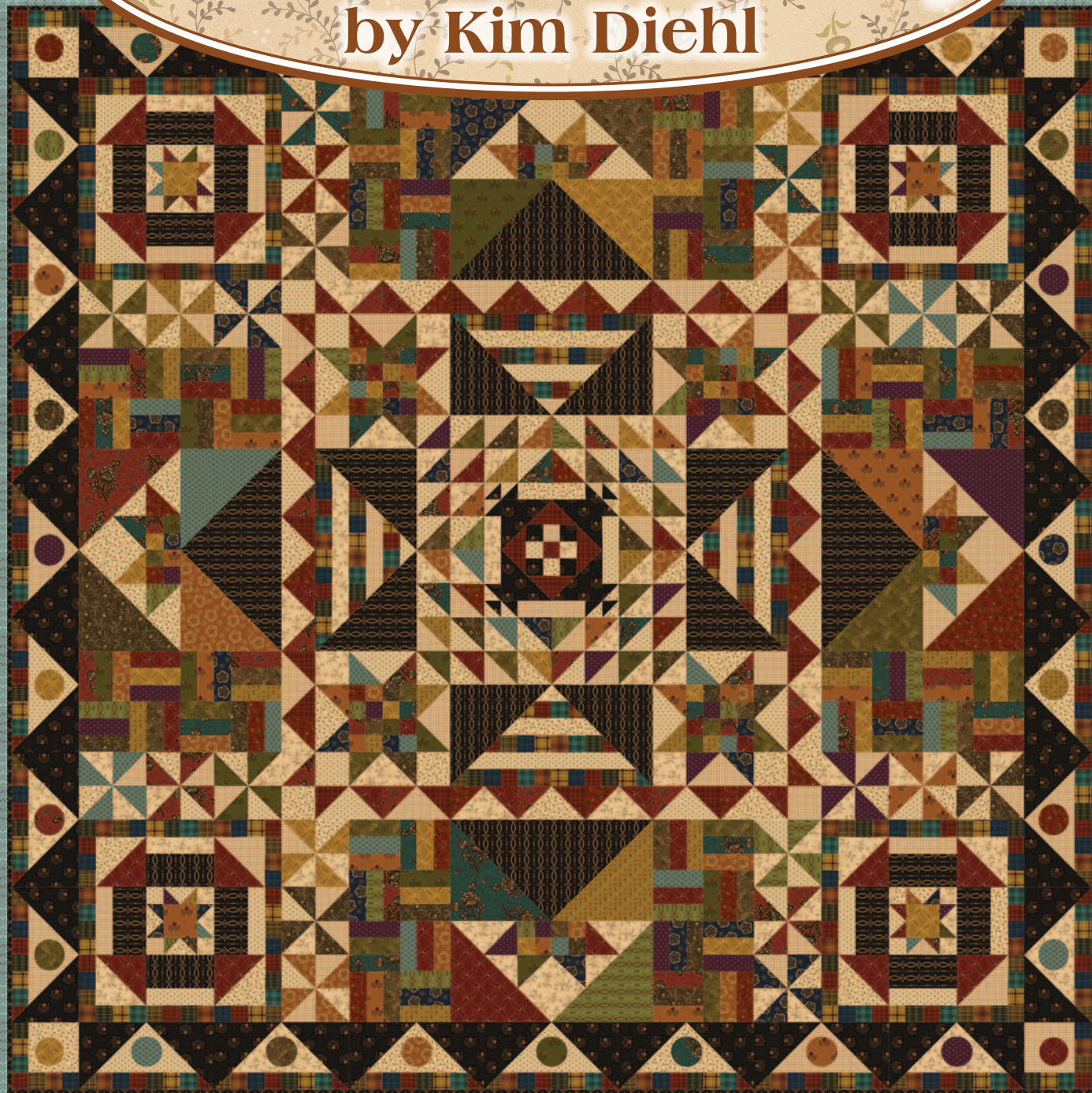


STITCH ALONG PROGRAM

Pride and Joy

by Kim Diehl



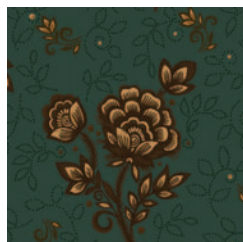
Helping Hands Collection

Six-part series ♦ Finished quilt size: 64½" x 64½"

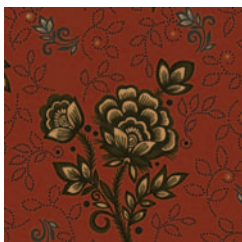


Henry Glass & Co., Inc.

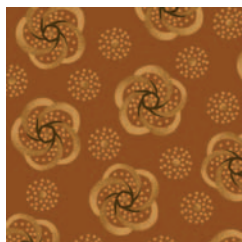
Helping Hands Fabrics in the Collection



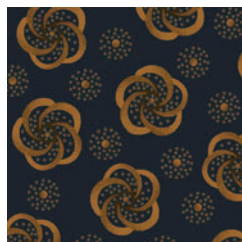
6874-70



6874-88



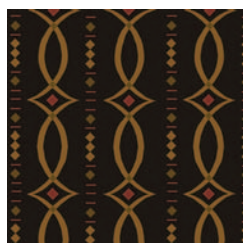
6875-33



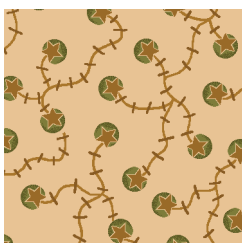
6875-77



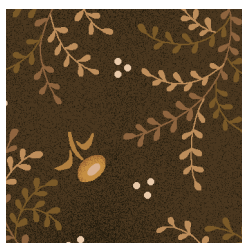
6876-66



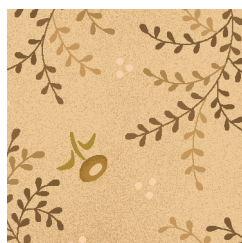
6876-99



6877-44



6878-33



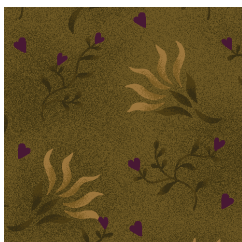
6878-44



6878-88



6879-33



6879-66



6880-11



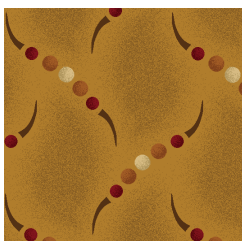
6880-44



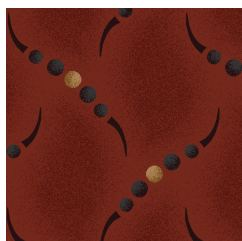
6880-55



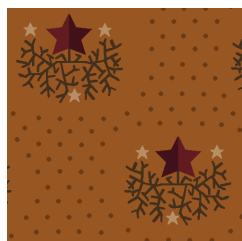
6881-40



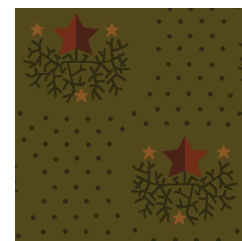
6882-40



6882-88



6883-30



6883-66



6883-99



6884Y-33



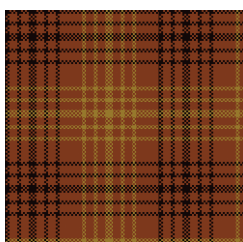
6885Y-77



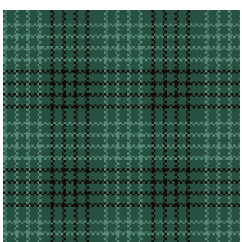
6886Y-66



6887Y-30



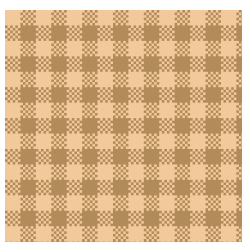
6888Y-33



6889Y-11



6890Y-88



6891Y-44



6891Y-44