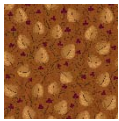


~ Kim Diehl's Annual SIMPLE WHATNOTS CLUB 8 ~

Wit and Wisdom Ordering Summary for One Complete SWC8 Project Collection

Ordering summary includes binding for each project; backing requirements are not included. Yardages have been rounded up to the next 1/8 yard increment for cutting needs. **Please refer to the individual project directions when cutting and preparing kits.**



1417-30 ♦ 1/2 yard



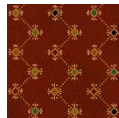
1421-70 ♦ 1 yard



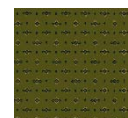
1426-33 ♦ 3/4 yard



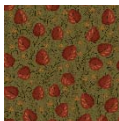
1417-40 ♦ 1/2 yard



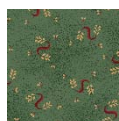
1421-88 ♦ 1/2 yard



1426-66 ♦ 1/2 yard



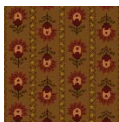
1417-66 ♦ 1/2 yard



1422-11 ♦ 1/2 yard



1426-77 ♦ 1/2 yard



1418-33 ♦ 7/8 yard



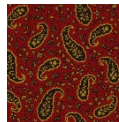
1422-99 ♦ 3/4 yard



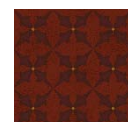
1427-33 ♦ 1/2 yard



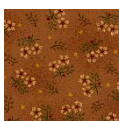
1418-88 ♦ 1/2 yard



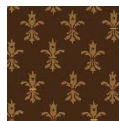
1423-88 ♦ 1/2 yard



1427-88 ♦ 3/4 yard



1419-30 ♦ 1/2 yard



1424-33 ♦ 1 yard



1428-44 ♦ 1 yard



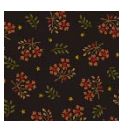
1419-88 ♦ 1/2 yard



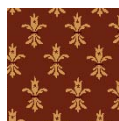
1424-55 ♦ 1/2 yard



1429-44 ♦ 1 1/4 yards



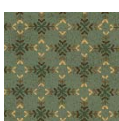
1419-99 ♦ 1 yard



1424-88 ♦ 1/2 yard



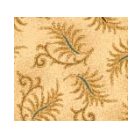
1430-44 ♦ 3/4 yard



1420-11 ♦ 1/2 yard



1425-40 ♦ 1 yard



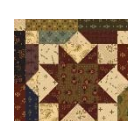
1431-44 ♦ 1 1/4 yards



1420-30 ♦ 1/2 yard



1425-66 ♦ 1/2 yard



1431-44 ♦ 1 1/4 yards