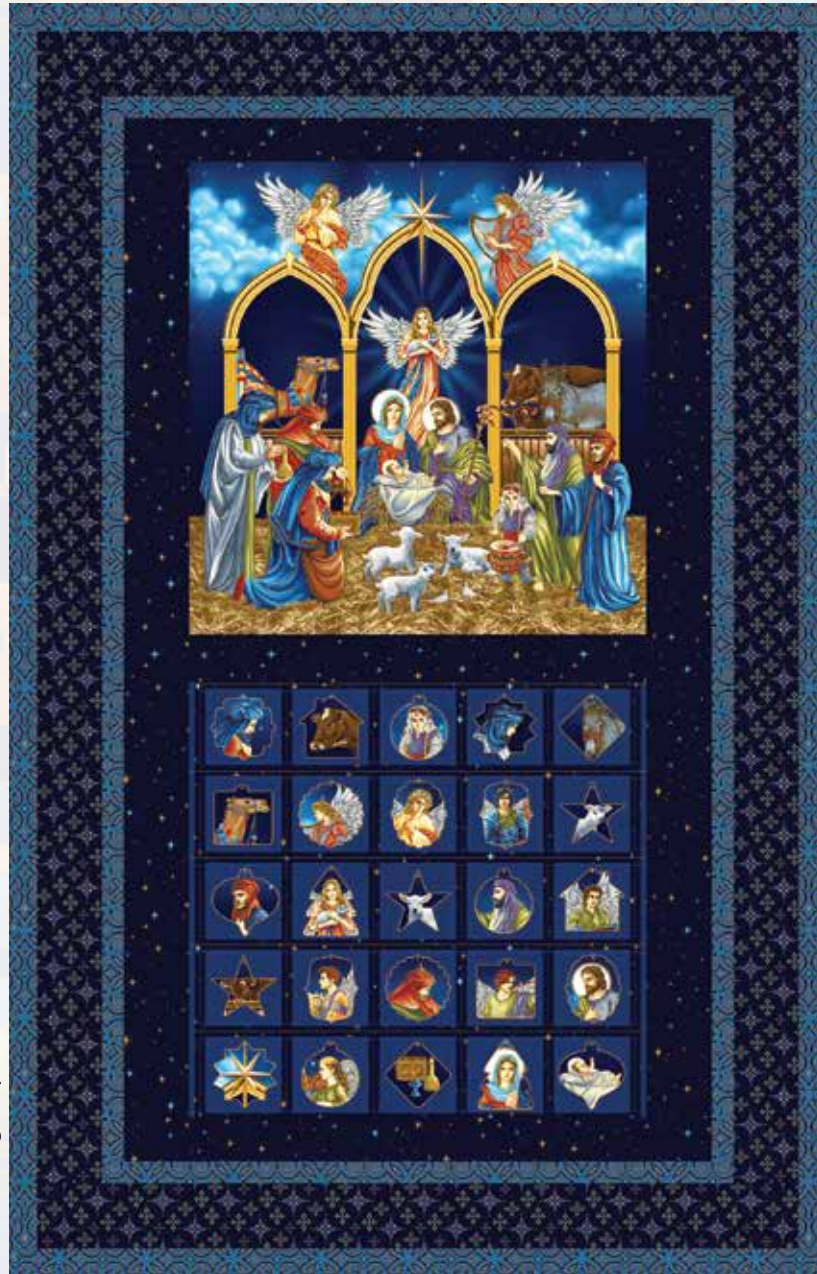


SILENT NIGHT

• A Free Project Sheet •
• NOT FOR RESALE •

Missouri Star

INCLUDES
BONUS
ORNAMENT
PATTERN



Quilt Design by Lisa Loessel

Skill Level: Advanced Beginner

 Henry Glass & Co., Inc.



facebook

Finished Quilt Size: 37" x 60"
Approximate Ornament Size: 2 1/2" x 2 1/2"
49 West 37th Street, New York, NY 10018
tel: 212-686-5194 fax: 212-532-3525
Toll Free: 800-294-9495
www.henryglassfabrics.net
Please check our website for pattern updates before starting this project.

SILENT NIGHT

Missouri Star

Fabrics in the Collection



Silent Night Joy Peace Panel
Midnight – 2505PM-77



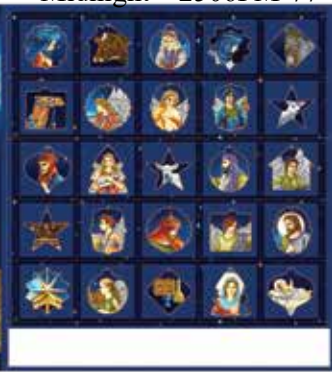
Silent Night Song Panel
Midnight – 2506PM-77



Angel Blocks
Midnight – 2507M-77



Advent Calendar Panel
Midnight – 2508PM-77



Foulard Stars
Midnight – 2509M-77



Foulard Stars
Black – 2509M-99



Arabesque
Gold – 2510M-34



Arabesque
Blue – 2510M-77



Tossed Angels
Midnight – 2511M-77



Tossed Ornament
Midnight – 2512M-77



Bethlehem Town
Multi – 2513M-73



Bethlehem Town
Blue – 2513M-77



Mini Stars
Midnight – 2514M-77

SILENT NIGHT

Missouri Star

Calendar Materials

| | | |
|-------------|--------------------------------------|-----------|
| 1 panel | Advent Calendar Panel - Midnight (A) | 2508M-77 |
| 1 1/8 yards | Mini Stars - Midnight (B) | 2514M-77 |
| 1 yard | Arabesque - Blue (C) | 2510M-77* |
| 5/8 yard | Foulard Stars - Midnight (D) | 2509M-77 |
| 4 yards | Bethlehem Town - Blue (Backing) | 2513M-77 |

*Includes binding

Calendar Cutting Instructions

Please note: all strips are cut across the width of fabric (WOF) from selvage to selvage unless otherwise noted.

From the Advent Calendar Panel - Midnight (A), cut:

- See instructions on panel for cutting.

From the Mini Stars - Midnight (B), cut:

- (1) 21 1/2" x 24 1/2" WOF strip. (As listed on panel)
- (3) 3 1/2" x WOF strips. Sew the strips together end to end with diagonal seams and cut (2) 3 1/2" x 46 1/2" strips.
- (2) 2 1/2" x 27 1/2" WOF strips.

From the Arabesque - Blue (C), cut:

- (3) 1 1/2" x WOF strips. Sew the strips together end to end with diagonal seams and cut (2) 1 1/2" x 58 1/2" strips.
- (2) 1 1/2" x 37 1/2" WOF strips.
- (3) 1 1/2" x WOF strips. Sew the strips together end to end with diagonal seams and cut (2) 1 1/2" x 50 1/2" strips.
- (2) 1 1/2" x 29 1/2" WOF strips.
- (5) 2 1/2" x WOF strips for the binding.

From the Foulard Stars - Midnight (D), cut:

- (3) 3 1/2" x WOF strips. Sew the strips together end to end with diagonal seams and cut (2) 3 1/2" x 52 1/2" strips.
- (2) 3 1/2" x 35 1/2" WOF strips.

From the Bethlehem Town - Blue (Backing), cut:

- (2) 68" x WOF strips for the backing. Sew the strips together and trim to make the 45" x 68" back.

Calendar Block Assembly

1. Follow the instructions on the Advent Calendar Panel to add the pockets to the 21 1/2" x 24 1/2" Fabric B strip. Sew the newly sewn strip with the pockets to the bottom of the remaining Fabric A piece to make the Center Block (Fig. 1).

Follow the instructions on the Fabric A panel to complete the 21 1/2" x 46 1/2" Center Block

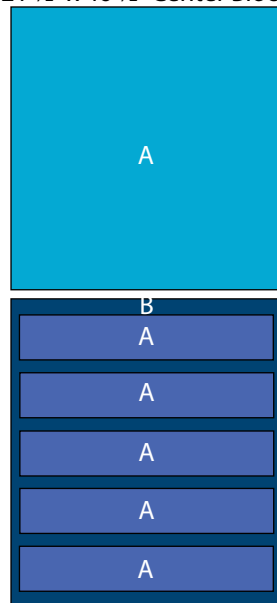
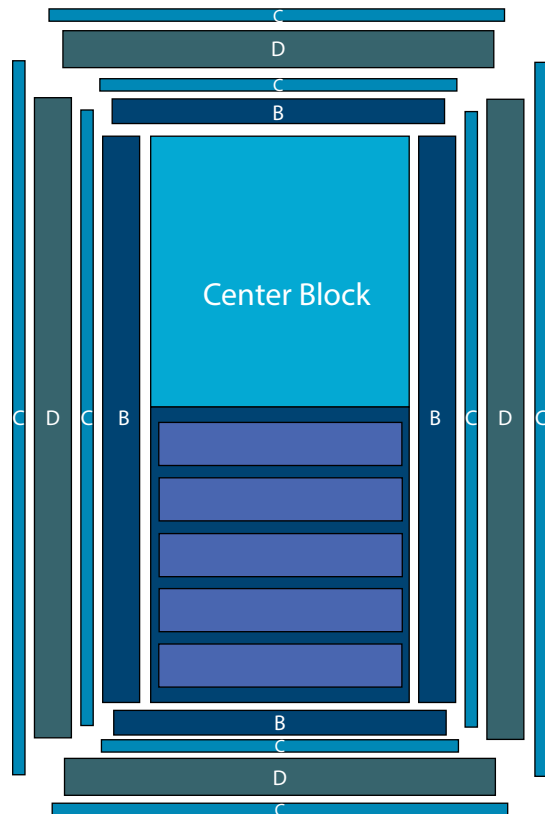


Fig. 1

Calendar Quilt Top Assembly

(Follow the Quilt Layout while assembling the quilt top.)

2. Sew (1) 3 1/2" x 46 1/2" Fabric B strip to each side of the Center Block. Sew (1) 2 1/2" x 27 1/2" Fabric B strip to the top and to the bottom of the Center Block.
3. Sew (1) 1 1/2" x 50 1/2" Fabric C strip to each side of the Center Block. Sew (1) 1 1/2" x 29 1/2" Fabric C strip to the top and to the bottom of the Center Block.
4. Sew (1) 3 1/2" x 52 1/2" Fabric D strip to each side of the Center Block. Sew (1) 3 1/2" x 35 1/2" Fabric D strip to the top and to the bottom of the Center Block.
5. Sew (1) 1 1/2" x 58 1/2" Fabric C strip to each side of the Center Block. Sew (1) 1 1/2" x 37 1/2" Fabric C strip to the top and to the bottom of the Center Block.
6. Layer and quilt as desired.
7. Sew the (5) 2 1/2" x WOF Fabric C strips together, end to end with 45-degree seams, to make the binding. Fold this long strip in half lengthwise with wrong sides together and press.
8. Bind as desired.



Quilt Layout

Ornament Materials

1/3 yard Tossed Ornaments - Midnight (A) 2512M-77

You will also need:

- 1 yard of 17" wide fusible web
- 1/3 yard of 42" wide black felt
- 6 yards of ribbon or cord for the ornaments
- Awl or craft knife

Ornament Cutting Instructions

Please note: All strips are cut across the width of fabric (WOF) from selvage to selvage unless otherwise noted.

From the Tossed Ornaments - Midnight (A):

- Back the fabric with fusible web following the manufacturer's instructions and fussy cut (25) assorted ornaments.

Ornament Assembly

9. Press (1) Fabric A Ornament onto the black felt. Cut out the black felt 1/8" larger than the ornament to create a black border around the ornament (Fig. 2).

10. Finish the raw edge of the Fabric A piece with a decorative stitch to secure it to the felt.

11. Using the hole on the printed ornament as a guide, **CAREFULLY** poke a hole through both layers of fabric (Fig. 3).

OPTIONAL: Use a grommet to finish the edge of the hole.

12. Cut the ribbon/cord into (25) 8" pieces to create the Ornament Ties.

13. Thread (1) Ornament Tie through the hole at the top of the ornament and tie the two ends of the tie together in a knot to complete the ornament (Fig. 4).

14. Repeat to make (25) Ornaments total.

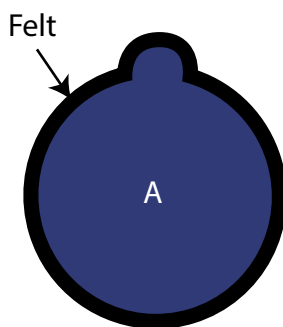


Fig. 2

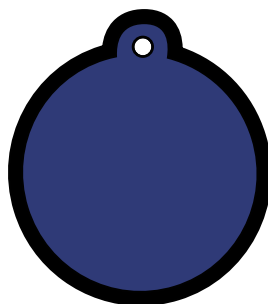


Fig. 3

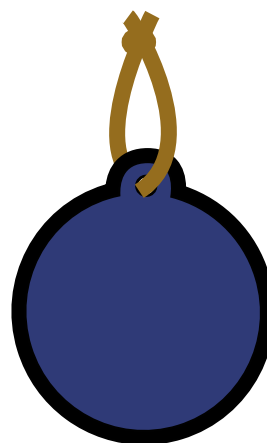


Fig. 4