

Sew Let's Stitch

By Sandy Lee

A Free Project Sheet
NOT FOR RESALE



Quilt Design by Heidi Pridemore

Quilt 1

Skill Level: Advanced Beginner

 Henry Glass & Co., Inc.



facebook

Finished Quilt Size: 62" x 82"
49 West 37th Street, New York, NY 10018
tel: 212-686-5194 fax: 212-532-3525
Toll Free: 800-294-9495
www.henryglassfabrics.net

Please check our website for pattern updates before starting this project.

SEW LET'S STITCH Quilt 1

Fabrics in the Collection



Quilted House Banner Panel
Red – 1864P-88



Border Stripe - Blue
1865-77



Patchwork - Tan
1866-44



Quilted Houses - Cream
1867-44



Tossed Allover - Off White
1868-9



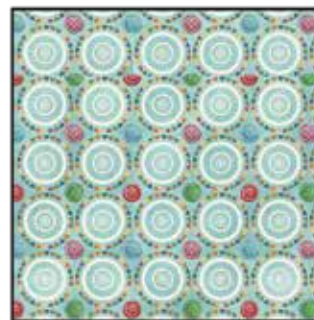
Sewing Machines - Blue
1869-77



Sewing Machines - Red
1869-88



Spools and Thimbles
Light Blue – 1870-11

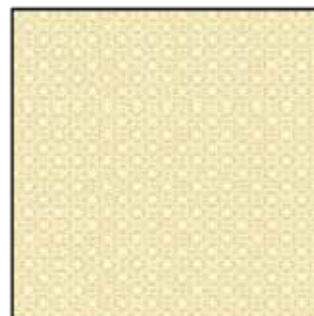


Sewing Pinwheels - Light Blue
1871-11



Quilt and Fabric - Butter
1872-33

Select Fabrics from
Modern Melody Basics



Cream
1063-40



Crimson Red
1063-88

Quilt 1

Materials

1 panel	Quilted House Banner Panel - Red (A)	1864P-88
1 1/8 yards	Modern Melody Basics - Cream (B)	1063-40
3/4 yard	Sewing Pinwheels - Light Blue (C)	1871-11*
1 1/3 yards	Tossed Allover - Off White (D)	1868-9
1/4 yard	Sewing Machines - Blue (E)	1869-77
1/4 yard	Spools and Thimbles - Light Blue (F)	1870-11
1/4 yard	Sewing Machines - Red (G)	1869-88
1/2 yard	Quilted Houses - Cream (H)	1867-44
1/2 yard	Quilt and Fabric - Butter (I)	1872-33
1/2 yard	Modern Melody Basics - Crimson Red (J)	1063-88
2 1/2 yards	Border Stripe - Blue (K)	1865-77
5 yards	Patchwork - Tan (Backing)	1866-44

*Includes binding

Cutting Instructions

Please note: all strips are cut across the width of fabric (WOF) from selvage to selvage edge unless otherwise noted.

From the Quilted House Banner Panel - Red (A):

- Fussy cut (1) 23" x 42 1/2" panel.

From the Modern Melody Basics - Cream (B), cut:

- (4) 3 3/8" x WOF strips. Sub-cut (40) 3 3/8" squares.
- (2) 2" x 42 1/2" WOF strips, piece as needed.
- (2) 2" x 26" WOF strips.
- (3) 2" x WOF strips. Sew the strips together end to end with diagonal seams and cut (2) 2" x 52 1/2" strips.
- (2) 2" x 35 1/2" WOF strips.

From the Sewing Pinwheels - Light Blue (C), cut:

- (1) 4 1/2" x WOF strip. Sub-cut (4) 4 1/2" squares.
- (8) 2 1/2" x WOF strips for the binding.

From the Tossed Allover - Off White (D), cut:

- (2) 4 1/2" x 44 1/2" Length of Fabric (LOF) strips.
- (2) 4 1/2" x 24 1/2" WOF strips.

From the Sewing Machines - Blue (E), cut:

- (2) 3 3/8" x WOF strips. Sub-cut (14) 3 3/8" squares.

From the Spools and Thimbles - Light Blue (F), cut:

- (2) 3 3/8" x WOF strips. Sub-cut (14) 3 3/8" squares.

From the Sewing Machines - Red (G), cut:

- (1) 3 3/8" x WOF strips. Sub-cut (12) 3 3/8" squares.

From the Quilted Houses - Cream (H), cut:

- (2) 5 1/2" x WOF strips. Sub-cut (10) 5 1/2" squares.

From the Quilt and Fabric - Butter (I), cut:

- (2) 5 1/2" x WOF strips. Sub-cut (10) 5 1/2" squares.

From the Modern Melody Basics - Crimson Red (J), cut:

- (4) 2" x WOF strips. Sew the strips together end to end with diagonal seams and cut (2) 2" x 65 1/2" strips.
- (3) 2" x WOF strips. Sew the strips together end to end with diagonal seams and cut (2) 2" x 48 1/2" strips.

From the Border Stripe - Blue (K), cut:

- (2) 7 1/2" x 86" LOF strips.
- (2) 7 1/2" x 66" LOF strips.

From the Patchwork - Tan (Backing), cut:

- (2) 90" x WOF strips for the backing. Sew the strips together and trim to make the 70" x 90" back.

Block Assembly

1. Sew (1) 2" x 42 1/2" Fabric B strip to each side of the 23" x 42 1/2" Fabric A panel. Sew (1) 2" x 26" Fabric B strip to the top and to the bottom of the Fabric A panel. Trim the block to measure 24 1/2" x 44 1/2" to make the Center Block (Fig. 1).

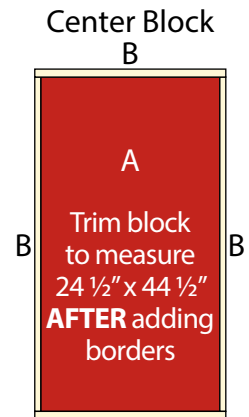


Fig. 1 B

2. Place (1) 3 3/8" Fabric E square on top of (1) 3 3/8" Fabric B square, right sides together. Draw a line across the diagonal of the top square (Fig. 2). Sew 1/4" away from each side of the drawn diagonal line (Fig. 2). Cut the (2) squares apart on the drawn diagonal line (Fig. 3) to make (2) half-square triangles. Trim the half-square triangles to measure 3" square to make (2) Unit 1 squares (Fig. 4). Repeat to make (28) Unit 1 squares total.

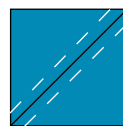


Fig. 2



Fig. 3

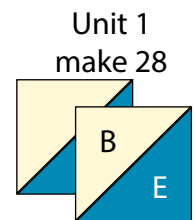


Fig. 4

3. Repeat Step 2 and refer to Figures 5-6 for fabric identification and placement to make (28) Unit 2 squares and (24) Unit 3 squares.

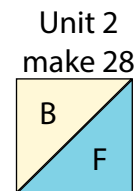


Fig. 5

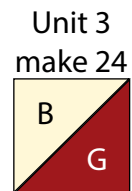


Fig. 6

Quilt 1

4. Sew (4) Unit 1 squares together to make (1) Unit 4 square (Fig. 7). Repeat to make (7) Unit 4 squares total.

5. Sew (4) Unit 2 squares together to make (1) Unit 5 square (Fig. 8). Repeat to make (7) Unit 5 squares total.

6. Sew (4) Unit 3 squares together to make (1) Unit 6 square (Fig. 9). Repeat to make (6) Unit 6 squares total.

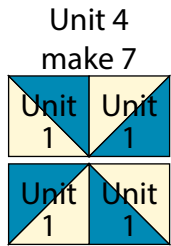


Fig. 7

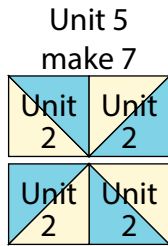


Fig. 8

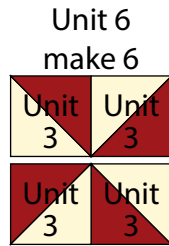


Fig. 9

7. Sew (2) Unit 5 squares, (3) 5 1/2" Fabric I squares, (2) Unit 4 squares, (2) 5 1/2" Fabric H squares and (2) Unit 6 squares together to make Left Side Border (Fig. 10).

8. Sew (2) Unit 5 squares, (3) 5 1/2" Fabric I squares, (2) Unit 6 squares, (2) 5 1/2" Fabric H squares and (2) Unit 4 squares together to make Right Side Border (Fig. 11).

Left Side
Border

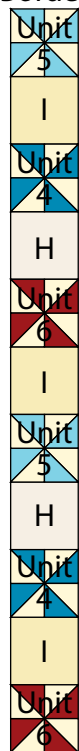


Fig. 10

Right Side
Border



Fig. 11

9. Sew (1) 5 1/2" Fabric H square, (1) Unit 4 square, (1) 5 1/2" Fabric I square, (1) Unit 5 square, (1) 5 1/2" Fabric H square, (1) Unit 6 square, (1) 5 1/2" Fabric I square, (1) Unit 4 square and (1) 5 1/2" Fabric H square together in that order to make the Top Border (Fig. 12).

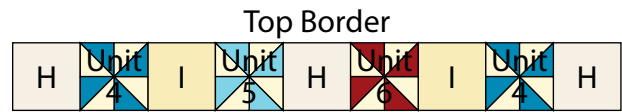


Fig. 12

10. Sew (1) 5 1/2" Fabric H square, (1) Unit 5 square, (1) 5 1/2" Fabric I square, (1) Unit 4 square, (1) 5 1/2" Fabric H square, (1) Unit 6 square, (1) 5 1/2" Fabric I square, (1) Unit 5 square and (1) 5 1/2" Fabric H square together in that order to make the Bottom Border (Fig. 13).

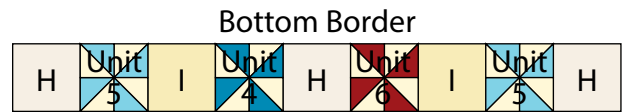


Fig. 13

Quilt Top Assembly

(Follow the Quilt Layout while assembling the quilt top.)

11. Sew (1) 4 1/2" x 44 1/2" Fabric D strip to each side of the Center Block. Sew one 4 1/2" Fabric C square to each end of (1) 4 1/2" x 24 1/2" Fabric D strip. Repeat to make a second strip. Sew the strips to the top and to the bottom of the Center Block.

12. Sew (1) 2" x 52 1/2" Fabric B strip to each side of the Center Block. Sew (1) 2" x 35 1/2" Fabric B strip to the top and to the bottom of the Center Block.

13. Sew the Side, Top and Bottom Borders to the Center Block.

14. Sew (1) 2" x 65 1/2" Fabric J strip to each side of the Center Block. Sew (1) 2" x 48 1/2" Fabric J strip to the top and to the bottom of the Center Block.

15. Center (1) 7 1/2" x 86" Fabric K strip on (1) side of the Center Block and pin in place. Start sewing the strip a 1/4" from the top edge of the block and stop a 1/4" from the bottom edge. **DO NOT TRIM THE EXCESS.** Repeat with the opposite side.

16. Repeat Step 15 to sew (1) 7 1/2" x 66" Fabric K strip to the top and to the bottom of the Center Block, making sure to stop and start 1/4" away from each end of the block. To miter each corner, fold the Center Block on a diagonal, wrong side together. This should line up the strips from adjacent sides (Fig. 14).

Quilt 1

17. Starting at the sewn seam (represented by the arrow in Figure 14), draw a 45-degree line to the edge of the fabric. Sew on the drawn line. Trim the excess fabric leaving a 1/4" seam. Repeat this step with the remaining corners to make the quilt top.

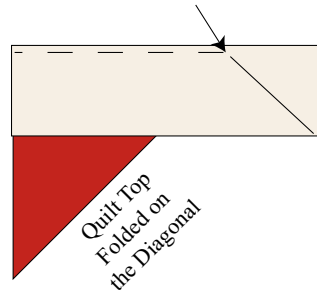
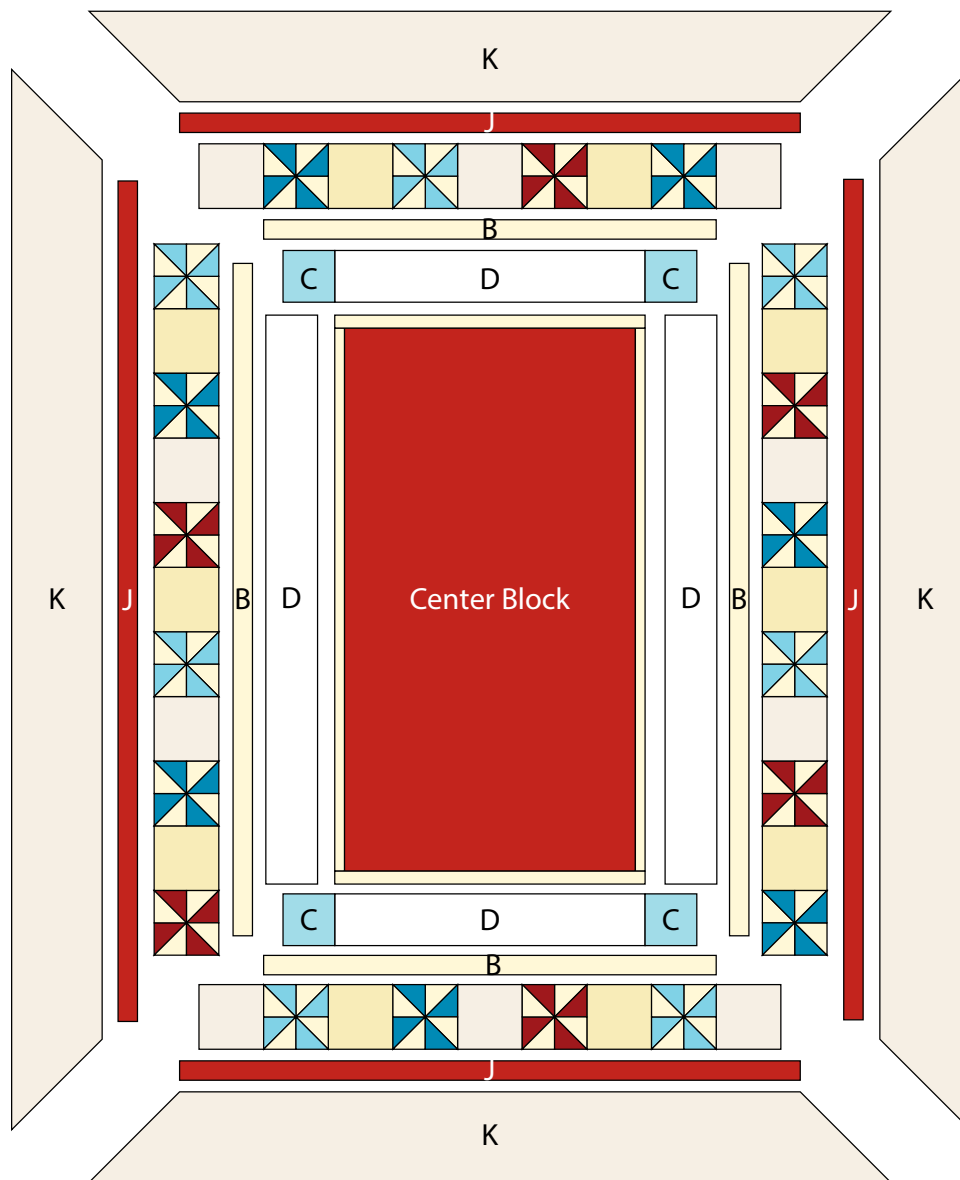


Fig. 14

18. Layer and quilt as desired.

19. Sew the (8) 2 1/2" x WOF Fabric C strips together, end to end with 45-degree seams, to make the binding. Fold this long strip in half lengthwise with wrong sides together and press.

20. Bind as desired.



Quilt Layout

Every effort has been made to ensure that all projects are error free. All the information is presented in good faith, however no warranty can be given nor results guaranteed as we have no control over the execution of instructions. Therefore, we assume no responsibility for the use of this information or damages that may occur as a result. When errors are brought to our attention, we make every effort to correct and post a revision as soon as possible. Please make sure to check www.henryglassfabrics.net for pattern updates prior to starting the project. We also recommend that you test the project prior to cutting for kits. Finally, all free projects are intended to remain free to you and are not for resale.