

## ~ Kim Diehl's Annual SIMPLE WHATNOTS CLUB 10 ~

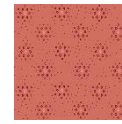
**Gratitude & Grace ordering summary for one complete SWC10 project collection** (excluding bonus Labor of Love sampler project to be released summer 2021.) Ordering summary includes binding for each project; backing requirements are not included. Yardages have been rounded up to the next 1/8 yard increment for cutting needs. **Please refer to the individual project directions when cutting and preparing kits.**



9401-11 ♦ 5/8 yard



9406-66 ♦ 1/3 yard



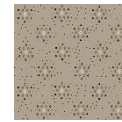
9411-22 ♦ 1/3 yard



9401-33 ♦ 1/3 yard



9407-44 ♦ 1/3 yard



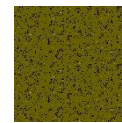
9411-93 ♦ 5/8 yard



9402-33 ♦ 1/2 yard



9407-88 ♦ 1/3 yard



9412-66 ♦ 1/3 yard



9402-40 ♦ 1 3/8 yards



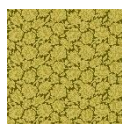
9408-30 ♦ 1/3 yard



9412-88 ♦ 5/8 yard



9403-88 ♦ 1/2 yard



9408-66 ♦ 1/3 yard



9413-22 ♦ 1/3 yard



9404-11 ♦ 5/8 yard



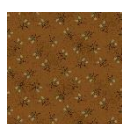
9408-77 ♦ 2/3 yard



9413-66 ♦ 1/3 yard



9404-44 ♦ 1/3 yard



9409-33 ♦ 3/4 yard



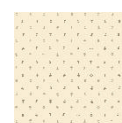
9414-40 ♦ 1 3/8 yards



9404-88 ♦ 1/3 yard



9409-55 ♦ 1/3 yard



9415-40 ♦ 1 3/8 yards



9405-99 ♦ 1 1/2 yards



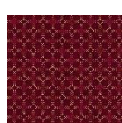
9409-77 ♦ 7/8 yard



9416-40 ♦ 1 7/8 yards



9406-30 ♦ 1/3 yard



9410-55 ♦ 1/3 yard



9417-40 ♦ 1 3/8 yard