

Peek A Boo Flannel

• A Free Project Sheet
• NOT FOR RESALE

By Kendra Shedenhelm

Quilt Design by Heidi Pridemore



Aqua Version



Pink Version

Quilt 1

Skill Level: Beginner

 Henry Glass & Co., Inc.



facebook

Finished Quilt Size: 46" x 66"
49 West 37th Street, New York, NY 10018
tel: 212-686-5194 fax: 212-532-3525
Toll Free: 800-294-9495
www.henryglassfabrics.net

Please check our website for pattern updates before starting this project.

PEEK A BOO FLANNEL Quilt 1

Fabrics in the Collection



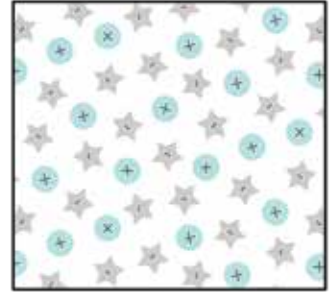
Novelty Stripe
Aqua – F168-11



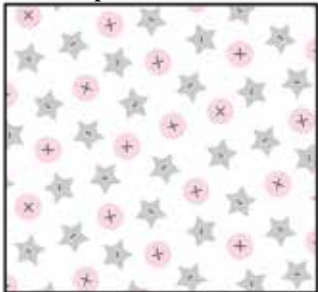
Novelty Stripe
Pink – F168-22



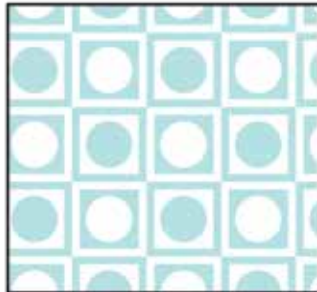
Kitty Faces in 3 inch Blocks
Pink – F169-22



Buttons
White/Aqua – F170-19



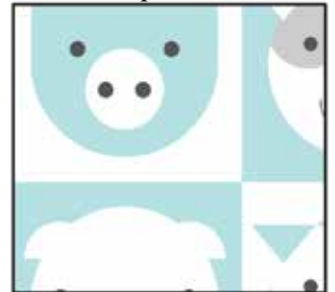
Buttons
White/Pink – F170-29



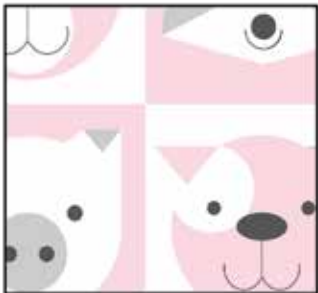
Geometric Dots in Squares
Aqua – F171-11



Geometric Dots in Squares
Pink – F171-22



Animal Faces in 5 inch Blocks
Aqua – F172-11



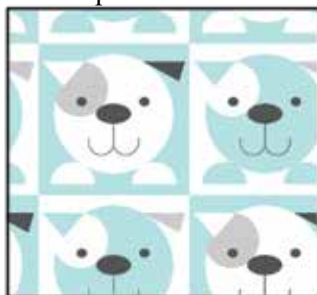
Animal Faces in 5 inch Blocks
Pink – F172-22



Tossed Animals
Aqua – F173-11



Tossed Animals
Pink – F173-22



Puppy Faces in 3 inch Blocks
Aqua – F174-11



24 inch Animal Panel
Aqua – F175P-11



24 inch Animal Panel
Pink – F175P-22

Select Fabric from
Fluffy Solid Basics



White
Fluffy Solid White

PEEK A BOO FLANNEL

Quilt 1

Aqua Version Materials

1 panel	24 Inch Animal Panel - Aqua (A)	F175P-11
1 yard	Fluffy Solid - White (B)	Fluffy Solid-White
3/8 yard	Tossed Animals - Aqua (C)	F173-11
1 yard	Geometric Dots in Squares - Aqua (D)	F171-11*
2 yards	Novelty Stripe - Aqua (E)	F168-11
3 yards	Buttons - White/Aqua (Backing)	F170-19

Pink Version Materials

1 panel	24 Inch Animal Panel - Pink (A)	F175P-22
1 yard	Fluffy Solid - White (B)	Fluffy Solid-White
3/8 yard	Tossed Animals - Pink (C)	F173-22
1 yard	Geometric Dots in Squares - Pink (D)	F171-22*
2 yards	Novelty Stripe - Pink (E)	F168-22
3 yards	Buttons - White/Pink (Backing)	F170-29

*Includes binding

Aqua Version Cutting Instructions

Please note: All strips are cut across the width of fabric (WOF) from selvage to selvage edge unless otherwise noted.

From the 24 Inch Animal Panel - Aqua (A):

- Fussy cut (1) 22 1/2" x 42 1/2" rectangle, centered on the panel.

From the Fluffy Solid - White (B), cut:

- (3) 3" x WOF strips. Sub-cut (20) 3" x 5 1/2" strips.
- (2) 2 1/2" x 42 1/2" WOF strips, piece as needed.
- (2) 2 1/2" x 26 1/2" WOF strips.
- (2) 2" x 38 1/2" WOF strips.
- (3) 2" x WOF strips. Sew the strips together end to end with diagonal seams and cut (2) 2" x 55 1/2" strips.

From the Tossed Animals - Aqua (C), cut:

- (2) 5 1/2" x WOF strips. Sub-cut (10) 5 1/2" squares.

From the Geometric Dots in Squares - Aqua (D), cut:

- (2) 5 1/2" x WOF strips. Sub-cut (8) 5 1/2" squares.
- (1) 5 1/2" x WOF strip. Sub-cut (2) 5 1/2" x 10 1/2" strips.
- (6) 2 1/2" x WOF strips for the binding.

From the Novelty Stripe - Aqua (E), cut:

- (2) 4 1/2" x 70" Length of Fabric (LOF) strips.
- (2) 4 1/2" x 50" LOF strips.

From the Buttons - White/Aqua (Backing), cut:

- (2) 54" x WOF strips for the backing. Sew the strips together and trim to make the 54" x 74" back.

Pink Version Cutting Instructions

Please note: All strips are cut across the width of fabric (WOF) from selvage to selvage edge unless otherwise noted.

From the 24 Inch Animal Panel - Pink (A):

- Fussy cut (1) 22 1/2" x 42 1/2" rectangle, centered on the panel.

From the Fluffy Solid - White (B), cut:

- (3) 3" x WOF strips. Sub-cut (20) 3" x 5 1/2" strips.
- (2) 2 1/2" x 42 1/2" WOF strips, piece as needed.
- (2) 2 1/2" x 26 1/2" WOF strips.
- (2) 2" x 38 1/2" WOF strips.
- (3) 2" x WOF strips. Sew the strips together end to end with diagonal seams and cut (2) 2" x 55 1/2" strips.

From the Tossed Animals - Pink (C), cut:

- (2) 5 1/2" x WOF strips. Sub-cut (10) 5 1/2" squares.

From the Geometric Dots in Squares - Pink (D), cut:

- (2) 5 1/2" x WOF strips. Sub-cut (8) 5 1/2" squares.
- (1) 5 1/2" x WOF strip. Sub-cut (2) 5 1/2" x 10 1/2" strips.
- (6) 2 1/2" x WOF strips for the binding.

From the Novelty Stripe - Pink (E), cut:

- (2) 4 1/2" x 70" Length of Fabric (LOF) strips.
- (2) 4 1/2" x 50" LOF strips.

From the Buttons - White/Pink (Backing), cut:

- (2) 54" x WOF strips for the backing. Sew the strips together and trim to make the 54" x 74" back.

Block Assembly

Note: The arrows in figures represent the fabric print direction. Pay attention to the fabric and unit orientations when assembling the various components. Use a 1/4" seam allowance with right sides together (RST) unless otherwise noted.

1. Sew (1) 2 1/2" x 42 1/2" Fabric B strip to each side of the 22 1/2" x 42 1/2" Fabric A rectangle. Sew (1) 2 1/2" x 26 1/2" Fabric B strip to the top and to the bottom of the Fabric A rectangle to make the Center Block (Fig. 1). **Trim the block to measure 25 1/2" x 45 1/2".**

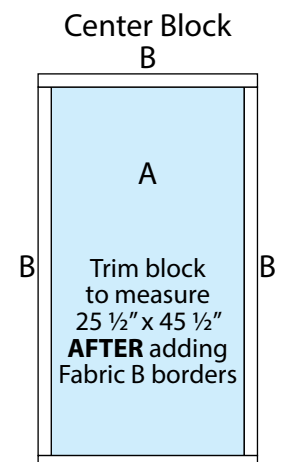


Fig. 1 B

2. Follow Figure 2 and sew together (6) 3" x 5 1/2" Fabric B strips, (2) 5 1/2" Fabric D squares, (2) 5 1/2" Fabric C squares and (1) 5 1/2" x 10 1/2" Fabric D strip to make (1) Side Border. Repeat to make a second Side Border.

Side Border
make 2

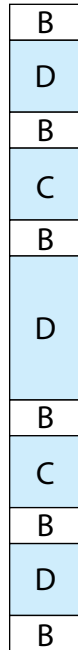


Fig. 2

3. Follow Figure 3 and sew together (3) 5 1/2" Fabric C squares, (4) 3" x 5 1/2" Fabric B strips and (2) 5 1/2" Fabric D squares to make the Top Border. Repeat to make the Bottom Border.

Top/Bottom Border
make 2

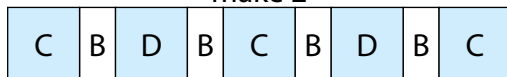


Fig. 3

Quilt Top Assembly

(Follow the Quilt Layout while assembling the quilt top.)

4. Sew (1) Side Border to each side of the Center Block.
5. Sew the Top Border and Bottom Border to the top and to the bottom of the Center Block.
6. Sew (1) 2" x 55 1/2" Fabric B strip to each side of the Center Block. Sew (1) 2" x 38 1/2" Fabric B strip to the top and to the bottom of the Center Block.
7. Center (1) 4 1/2" x 70" Fabric E strip on (1) side of the Center Block and pin in place. Start sewing the strip a 1/4" from the top edge of the block and stop a 1/4" from the bottom edge. **DO NOT TRIM THE EXCESS.** Repeat with the opposite side.
8. Repeat Step 7 to sew (1) 4 1/2" x 50" Fabric E strip to the top and to the bottom of the Center Block, making sure to stop and start 1/4" away from each end of the block. To miter each corner, fold the Center Block on a diagonal, wrong side together. This should line up the strips from adjacent sides (Fig. 4).
9. Starting at the sewn seam (represented by the arrow in Figure 4), draw a 45-degree line to the edge of the fabric. Sew on the drawn line. Trim the excess fabric leaving a 1/4" seam. Repeat this step with the remaining corners to make the quilt top.

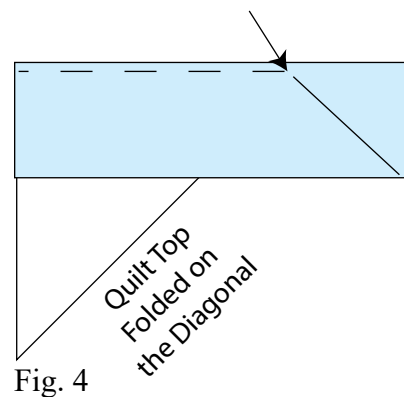
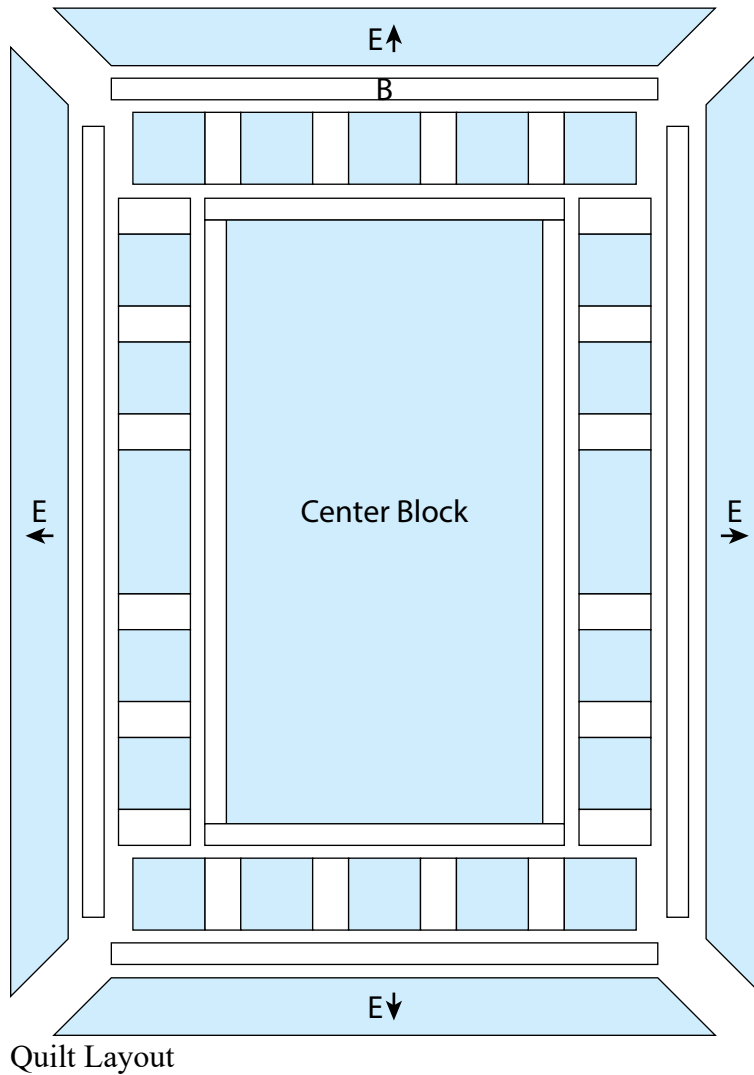


Fig. 4

10. Layer and quilt as desired.
11. Sew the (6) 2 1/2" x WOF Fabric D strips together, end to end with 45-degree seams, to make the binding. Fold this long strip in half lengthwise with wrong sides together and press.
12. Bind as desired.

PEEK A BOO FLANNEL Quilt 1



Every effort has been made to ensure that all projects are error free. All the information is presented in good faith, however no warranty can be given nor results guaranteed as we have no control over the execution of instructions. Therefore, we assume no responsibility for the use of this information or damages that may occur as a result. When errors are brought to our attention, we make every effort to correct and post a revision as soon as possible. Please make sure to check www.henryglassfabrics.net for pattern updates prior to starting the project. We also recommend that you test the project prior to cutting for kits. Finally, all free projects are intended to remain free to you and are not for resale.