

# My Favorite Trucks

**\*\*Quilt 1\*\***

by Denise Russell



Quilt size: 56" x 68"

Skill Level: Advanced Beginner



**Henry Glass & Co., Inc.**

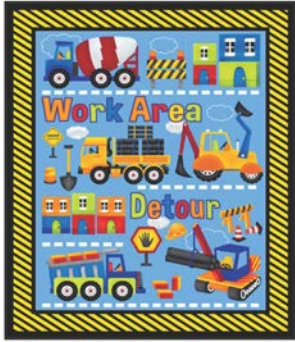
49 West 37th Street  
New York, NY 10018  
Tel: 212-686-5194 - Fax: 212-532-3525  
Toll Free: 800-294-9495 - [www.henryglassfabrics.com](http://www.henryglassfabrics.com)



**facebook**

Free Project  
NOT FOR RESALE

# My Favorite Trucks - Fabrics in the Collection



2203P-17 Construction site Panel-Blue



2208-99 Construction Zone Words - Black



2205-1 Mini Scenic Site - White



2206-17 Tossed Allover Trucks - Blue



2204-99 Truck's Name Blocks-Black



2210-99 Traffic Signs - Black



2206-99 Tossed Allover Trucks - Black



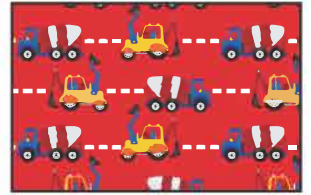
2208-1 Construction Zone Words - White



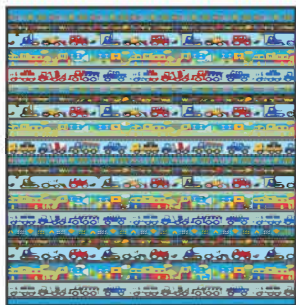
2210-1 Traffic Signs - White



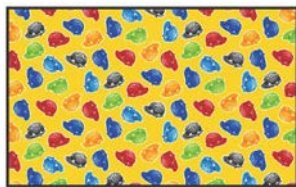
2209-66 Mini Set Trucks - Green



2209-88 Mini Set Trucks - Red



2207-17 Border Stripe - Blue



2211-33 Colorful Helmet- Yellow

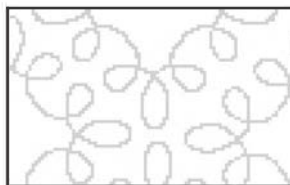


2212-99 Construction Bias Stripe - Black

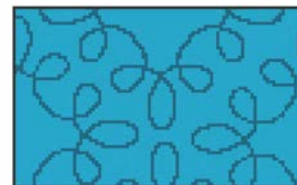


2212-33 Construction Bias Stripe - Yellow

Selected Fabrics from Modern Melody



1063-01



1063-17



1063-44



1063-99

## Materials

*Yardages and cutting instructions are based on 42" of usable fabric width*

1/8 yard 2210-1 Traffic Signs-White  
1/8 yard 2208-99 Construction Zone Words-Black  
1/8 yard 2206-99 Tossed Allover Trucks-Black  
1/4 yard 2212-33 Construction Bias Stripe-Yellow  
1/4 yard 2211-33 Colorful Helmet-Yellow  
1/4 yard 2206-17 Tossed Allover Trucks-Blue  
1/4 yard 2209-88 Mini Set Trucks-Red  
1/4 yard 2209-66 Mini Set Trucks-Green  
1/4 yard 2208-1 Construction Zone Words-White  
1/4 yard 2205-1 Mini Scenic Site-White  
3/8 yard 1063-44 Modern Melody-Yellow  
1/2 yard 2204-99 Truck's Name Blocks-Black  
5/8 yard 1063-17 Modern Melody-Blue  
5/8 yard 2212-99 Construction Bias Stripe-Black (blocks and binding)  
1/2 yard 2210-99 Traffic Signs-Black  
5/8 yard 1063-99 Modern Melody-Black (blocks and border)  
7/8 yard 1063-01 Modern Melody-White (blocks and border)  
2-2/3 yards 2207-17 Border Stripe-Blue (border)  
3-1/2 yards 2205-1 Mini Scenic Site-White for backing  
64" x 76" piece of batting  
Plastic for template  
Fusible web

## Cut Fabrics

**Note:** All strips are cut across the width of the fabric (WOF) from selvage to selvage unless otherwise noted. LOF means length of fabric, parallel to the selvage.

### From 2210-1 Traffic Signs-White:

\*Cut one (3-5/8" x WOF) strip. Sub-cut five 3-5/8" squares.

### From 2208-99 Construction Zone Words-Black:

\*Cut one (3-5/8" x WOF) strip. Sub-cut eight 3-5/8" squares.

### From 2206-99 Tossed Allover Trucks-Black:

\*Cut one (3-5/8" x WOF) strip. Sub-cut eleven 3-5/8" squares.

### From 2212-33 Construction Bias Stripe-Yellow:

\*Cut one (1" x WOF) strip. Sub-cut two 1" x 8-1/2" strips and two 1" x 9-1/2" strips.

\*Cut one (2-3/8" x WOF) strip. Sub-cut sixteen 2-3/8" squares.

### From 2211-33 Colorful Helmet-Yellow:

\*Cut one (2-3/4" x WOF) strip. Sub-cut twelve 2-3/4" squares.

\*Cut one (3-1/8" x WOF) strip. Sub-cut:

- Three 3-1/8" squares.

- Two bottom cone shapes and strips (follow Step 13 instructions).

### From 2206-17 Tossed Allover Trucks-Blue:

\*Cut one (3-1/8" x WOF) strip. Sub-cut:

- Two 3-1/8" squares

- Eight 2-3/4" squares

\*Cut one (3-5/8" x WOF) strip. Sub-cut two 3-5/8" squares.

### From 2209-88 Mini Set Trucks-Red:

\*Cut one (3-5/8" x WOF) strip. Sub-cut eight 3-5/8" squares.

\*Cut one (4-1/4" x WOF) strip. Sub-cut four 4-1/4" squares.

### From 2209-66 Mini Set Trucks-Green:

\*Cut two (3-1/2" x WOF) strips for third row.

### From 2208-1 Construction Zone Words-White:

\*Cut two (3-5/8" x WOF) strips. Sub-cut twelve 3-5/8" squares.

### From 2205-1 Mini Scenic Site-White:

\*Cut one (6-1/2" x WOF) strip. Sub-cut four 6-1/2" squares.

### From 1063-44 Modern Melody-Yellow:

\*Cut one (2" x WOF) strip. Sub-cut sixteen 2" squares.

\*Cut one (2" x WOF) strip for the top cone shapes.

\*Cut one (3-1/8" x WOF) strip. Sub-cut four 3-1/8" squares. Cut once diagonally. (C)

\*Cut one (5-3/4" x WOF) strip. Sub-cut:

- Two 5-3/4" squares. Cut twice diagonally. (D)

- Four 3-1/8" squares. Cut once diagonally. (F)

## From 2204-99 Truck's Name Blocks-Black:

\*Cut nine (5") truck blocks (blocks and border corner blocks).

## From 1063-17 Modern Melody-Blue:

\*Cut one (2" x WOF) strip.

\*Cut two (2-3/4" x WOF) strips. Sub-cut twenty-four 2-3/4" squares

\*Cut two (3-1/8" x WOF) strips. Sub-cut **twenty** 3-1/8" squares. Cut **12** squares once diagonally. (A)

\*Cut one (5-3/4" x WOF) strip. Sub-cut three 5-3/4" squares. Cut twice diagonally. (B)

## From 2212-99 Construction Bias Stripe-Black:

\*Cut one (1" x WOF) strip. Sub-cut two 1" x 8-1/2" strips and two 1" x 9-1/2" strips.

\*Cut seven (2-1/2" x WOF) strips for binding.

## From 2210-99 Traffic Signs-Black:

\*Cut three (2" x WOF) strips.

\*Cut four (2-3/4" x WOF) strips. Sub-cut thirty-two 2-3/4" squares.

\*Cut one (3-1/8" x WOF) strip. Sub-cut five 3-1/8" squares.

## From 1063-99 Modern Melody-Black:

\*Cut six (1-1/2" x WOF) strips for border 2.

\*Cut two (2-3/8" x WOF) strips. Sub-cut thirty-two 2-3/8" squares.

\*Cut one (8-1/2" x WOF) strip. Sub-cut:

- Two 8-1/2" squares
- Thirty 2-3/8" squares.

## From 1063-01 Modern Melody-White:

\*Cut seven (1-1/2" x WOF) strips for sashing.

\*Cut six (1-1/2" x WOF) strips for border 1.

\*Cut two (3-1/8" x WOF) strips. Sub-cut:

- Sixteen 3-1/8" squares. Cut once diagonally. (E)
- Two top cone shapes for applique (follow Step 13 instructions).

## From 2207-17 Border Stripe-Blue:

\*Cut two (3-1/2" x LOF) strips including only the buildings for fifth row.

\*Cut eight (4" x LOF) strips including only the traffic signs and trucks for border 3.

## Assemble Blocks

*Measurements include 1/4" seam allowances. Sew with right sides together unless otherwise stated. If no direction is specified, press seam toward darker fabric.*

1. Draw a diagonal line on the wrong side of **eight** Modern Melody Blue 3-1/8" squares. Place the marked squares over the three 3-1/8" squares of Colorful Helmet-Yellow and five 3-1/8" Traffic Signs-Black, right sides together, and stitch 1/4" from both sides of the marked line. Cut on the line, press open, and trim ears. Create 6 Modern Melody-Blue/Colorful Helmet-Yellow half-square triangles (HST) and 10 Modern Melody-Blue/Traffic Signs-Black HST.

2. Sew a Traffic Signs-Black 2-3/4" square to a Colorful Helmet-Yellow 2-3/4" square. Repeat to make 12 patches.

3. Sew a Modern Melody Blue/Colorful Helmet-Yellow HST to the left side of a patch from Step 2, and a Modern Melody Blue/Traffic Sign black to the right side of the same patch. Press seams toward HSTs. (Figure 1). Repeat to make **6** units.



Figure 1

4. Sew two Modern Melody Blue triangles A to two opposing sides of a Traffic Signs-White 3-5/8" square. Trim and press open. Sew two more Modern Melody Blue triangles A to the other sides of the same square. Trim and press open. Repeat to make 3 block centers. (Figure 2).



Figure 2

5. Sew one patch from step 2 to the left and one to the right side of a block center from step 4 noticing patch orientation. Press seams toward block center. Repeat with the other 2 block centers.

6. Sew a unit from step 3 to the top and one to the bottom of the block centers from Step 5, noticing patch orientation (Figure 3). Make 3 9" blocks.



Figure 3

7. Repeat steps 1-6 using the Modern Melody Yellow, the Tossed Allover Trucks-Blue, and Traffic Signs-Black 3-1/8" squares for step 1, the Traffic Signs-Black and Tossed Allover Trucks-Blue 2-3/4" squares for step 3, and the Modern Melody-Yellow triangles C and the Traffic Signs-White 3-5/8" squares in step 4. (Figure 4). Make 2 9" blocks.



Figure 4

8. Draw a diagonal line on the wrong side of the Modern Melody-Black 2-3/8" squares. Place the marked squares over the 2-3/8" squares of Construction Bias Stripe-Yellow and the 2-3/8" Mini Set Trucks-Red, right sides together, and stitch 1/4" from both sides of the marked line. Cut on the line, press open, and trim ears. Create 32 HST of each fabric combination.

9. Sew the HSTs from step 8 into matching flying geese units, and stitch the flying geese together two by two (double flying geese). Make 16 double flying geese units of each color combination. (Figures 5a, 5b).



Figure 5a



Figure 5b

10. Sew a Modern Melody-Black/Mini Set Trucks-Red double flying geese unit to the right and one to the left side of one 6-1/2" square of Mini Scenic Site-White. Press seams toward center square. Repeat with the remaining 6-1/2" squares.

11. Sew a 2" square of Modern Melody-Yellow to each side of the Modern Melody-Black/Construction Bias Stripe-Yellow double flying geese unit. Repeat to make 8 units. (Figure 6).



Figure 6

12. Sew a unit from step 11 to the top and one to the bottom of the units from step 10, noticing patch orientation (Figure 7). Make 4 blocks.



Figure 7

13. Trace the cone shapes on the template plastic or cardboard. Cut on the outline of each shape. Trace shapes on the smooth side of the fusible web: 2 cone bottoms A, 2 cone tops B, 2 strips C, and 2 strips D. Cut shapes about 1/4" away from the outline and iron them to the wrong side of the fabrics: shapes A, C, and D on Colorful Helmet-Yellow, and shapes B on Modern Melody-White. Cut shapes exactly on the outline and peel off backing paper.

14. Position applique' shapes on the two 8-1/2" squares of Modern Melody-Black following Figures 8a and 8b on the next page, fuse them as per fusible web manufacturer's directions, and machine applique' with blanket stitch.

15. Sew a 1" x 8-1/2" strip of Construction Bias Stripe-Black to each side of one block from step 14. Press seams toward center. Sew a 1" x 9-1/2" strip of same fabric to the top and one to the bottom of the block. Repeat using the second block and the 1" strips of Construction Bias Stripe-Yellow. (Figures 8a, 8b).



Figure 8a



Figure 8b

16. Make a strip set by sewing a 2" strip of Traffic Signs-Black in between two 2" strips Modern Melody-Yellow. Press seams open. Cut strip set into 12 2-3/4" x 4-1/2" rectangles (Figure 9).



17. Sew a unit from step 16 to each side of a 5" block from Truck's Name Blocks-Black. Press seams toward center. Make 3.

18. Sew a 2-3/4" square of Traffic Signs-Black to each side of the remaining rectangles from step 16. Press seams toward square. Sew one unit to the top and one to the bottom of the units from step 17. (Figure 10). Make 3 blocks.



19. Repeat steps 16 and 17 with the 2" strips of Traffic Signs-Black and the strip of Modern Melody-Blue. Repeat step 18 with the Modern Melody-Blue 2-3/4" squares. Make 2 blocks. (Figure 11).



20. Make 4 four-patch units using the 3-5/8" squares of Tossed Allover Trucks-Black and Mini Set Trucks-Red (Figure 12).



Figure 12

21. Sew 2 triangles E to two adjacent sides of a 2-3/4" Modern Melody-Blue square. Press seams toward square. Repeat to make 16 corner units. (Figure 13).



Figure 13

22. Sew two corner units from step 21 to opposing sides of a four-patch from step 20. Press seams toward center. Sew two more corner units to the other sides. Press seams toward center, and trim ears. Make 4 blocks. (Figure 14).



Figure 14

23. Sew two Modern Melody-Blue triangles B to two adjacent sides of a 3-5/8" square of Construction Zone Words-White. Press seams toward square. Repeat to make 6 units. Sew a Modern Melody-Blue triangle A to the corner Construction Zone Words-White squares. (Figure 15).



Figure 15

24. Sew two Construction Zone Words-White 3-5/8" squares to both sides of a 3-5/8" Tossed Allover Trucks-Black square. Press seams away from center square. Sew a Modern Melody-Blue triangle A to each Construction Zone Words-White square. Repeat to make 3 center units. (Figure 16).



Figure 16

25. Assemble block by sewing a unit from step 23 to the top and one to the bottom of each center unit from step 24. (Figure 17). Make 3 blocks.



Figure 17

26. Repeat step 23 using the Construction Zone Words-Black 3-5/8" squares and the Modern Melody-Yellow triangles D and F.

27. Repeat steps 24 and 25 with the Tossed Allover Trucks-Blue 3-5/8" squares, the Construction Zone Words-Black 3-5/8" squares, and the Modern Melody-Yellow triangles F. Make 2 blocks. (Figure 18).



Figure 18

## Assemble Quilt Top

28. Make the 3rd row by sewing two 3-1/2" strips of Mini Set Trucks-Green together end to end using a straight seam. Cut a 45-1/2" strip. Make the 5<sup>th</sup> row in the same manner using the two 3-1/2" strips of Border Strip-Blue, using the buildings section only.

29. Repeat step 28 by sewing together end to end the seven 1-1/2" strips of Modern Melody-White for the sashing. Cut into 5 45-1/2" strips for the sashing.

30. Noticing the block placement on the quilt photo, lay out seven rows. Stitch the blocks together in each row. Press seams in alternate directions for adjacent rows. Sew the block rows and sashing strips together and press seams in one direction.

31. For border 1, sew together six Modern Melody-White 1-1/2" strips end to end using diagonal seams. Stitch a border strip to each side of the quilt center and trim the extra length. Press seams toward the border. In the same manner, stitch one border to the top and another to the bottom.

32. For border 2, repeat step 32 using six Modern Melody-Black 1-1/2" strips.

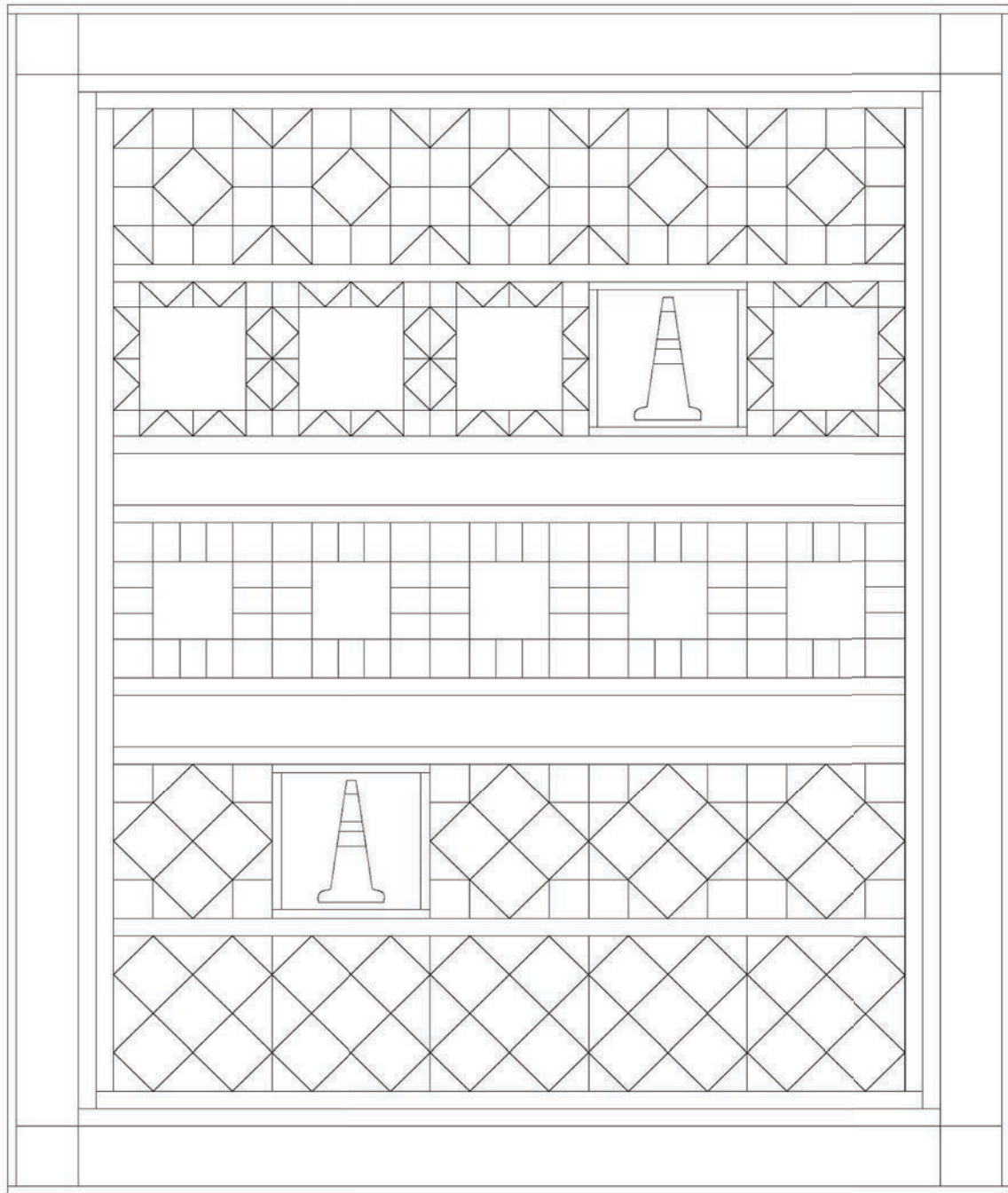
33. For border 3, cut the 4"-wide Border Stripe-Blue strips along the length of the fabric (select the traffic signs and trucks portion of the fabric only – 8 strips are needed). Sew the strips together end to end with a straight seam. Stitch a border strip to each side of the quilt center and trim the extra length. Press seams toward the border.

34. For the top and bottom borders, cut a border strip into two 49-1/2" lengths. Trim four truck blocks down to 4". Stitch one truck block to each end of the border strips. Stitch one border to the top and another to the bottom of the quilt center. Press seams toward the border.

## Finishing

35. Create a quilt sandwich with the batting between the quilt top and the backing. Pin or baste layers together, mark quilting design, and quilt by hand or machine. When quilting is complete, remove pins or basting, trim batting and backing even with raw edges of the quilt top.

36. Join the Construction Bias Stripe-Black 2-1/2" binding strips together end to end using a diagonal seam to make one long strip. Trim seams to 1/4" and press them open. Sew binding to the edges of the quilt top, mitering corners, and overlapping ends. Fold binding to the back of the quilt and stitch it in place by hand to finish.

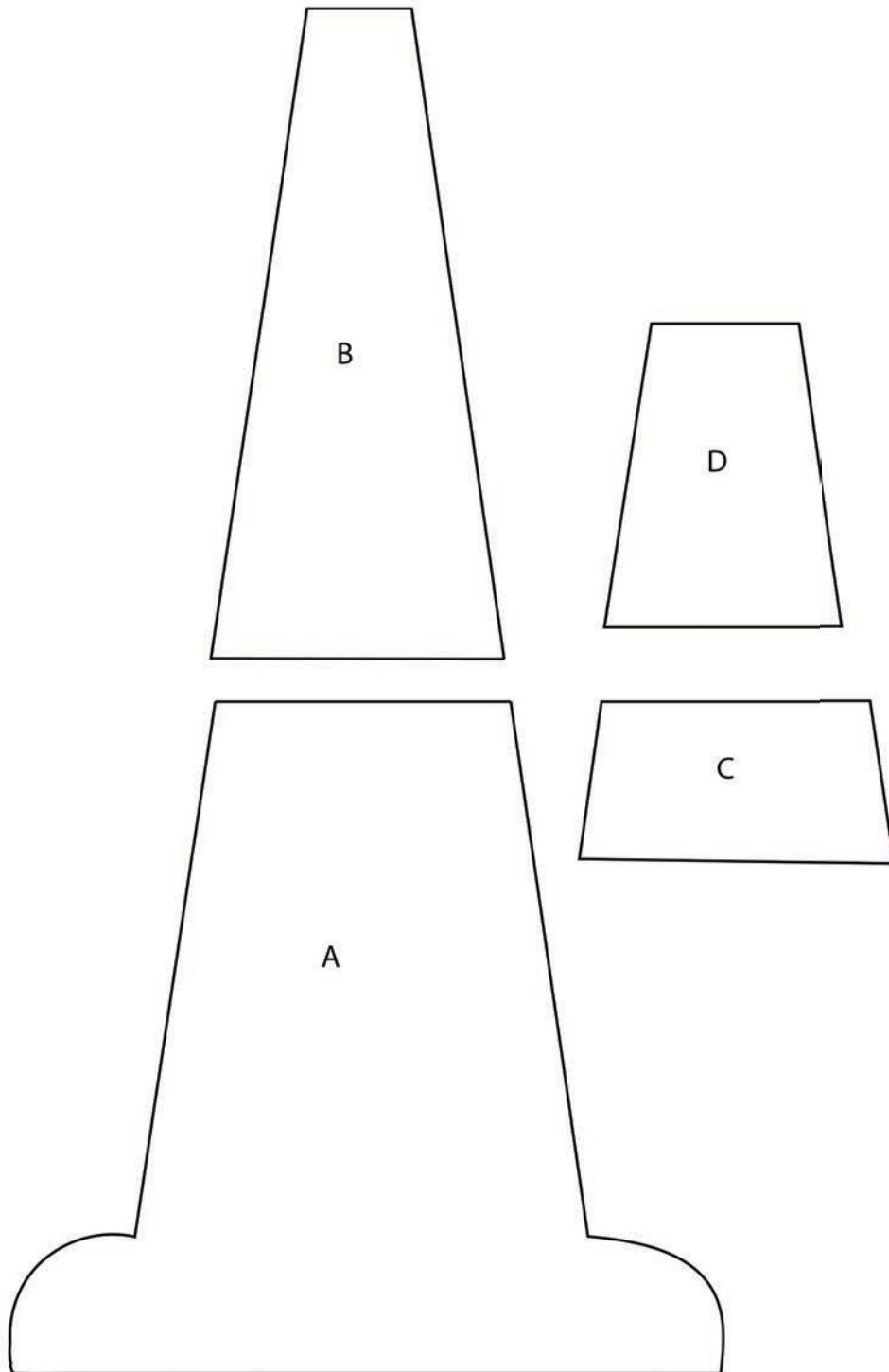


Quilt Diagram

©2018 Henry Glass & Co. Inc.

*Every effort has been made to ensure that all projects are error free. All the information is presented in good faith; however, no warranty can be given nor results guaranteed as we have no control over the execution of instructions. Therefore, we assume no responsibility for the use of this information or damages that may occur as a result. When errors are brought to our attention, we make every effort to correct and post a revision as soon as possible. Please make sure to check [www.henryglassfabrics.com](http://www.henryglassfabrics.com) for pattern updates prior to starting the project. We also recommend that you test the project prior to cutting for kits. Finally, all free projects are intended to remain free to you and are not for resale.*





©2018 Henry Glass & Co. Inc.

*Every effort has been made to ensure that all projects are error free. All the information is presented in good faith; however, no warranty can be given nor results guaranteed as we have no control over the execution of instructions. Therefore, we assume no responsibility for the use of this information or damages that may occur as a result. When errors are brought to our attention, we make every effort to correct and post a revision as soon as possible. Please make sure to check [www.henryglassfabrics.com](http://www.henryglassfabrics.com) for pattern updates prior to starting the project. We also recommend that you test the project prior to cutting for kits. Finally, all free projects are intended to remain free to you and are not for resale.*