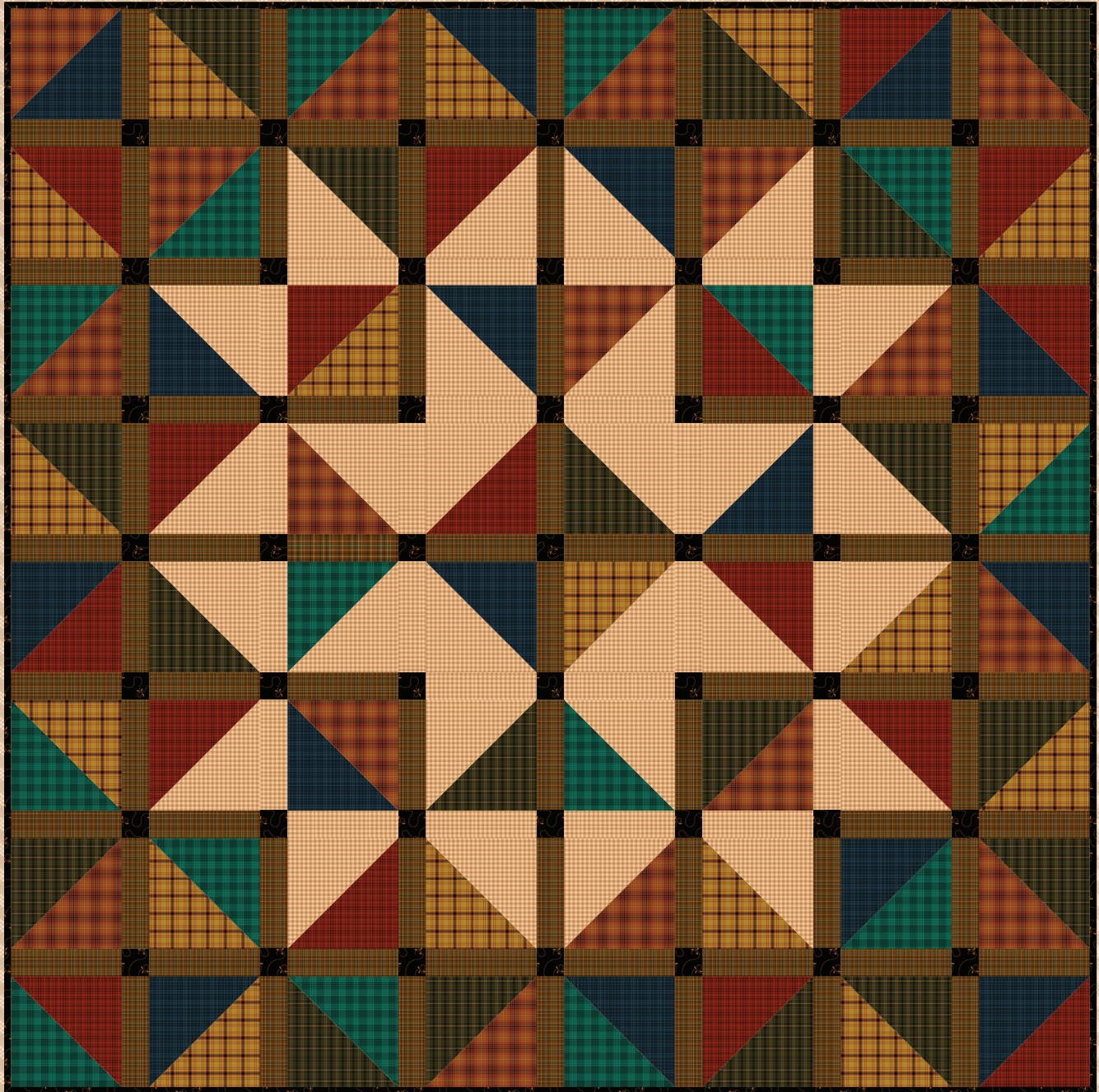


Kim Diehl's Yarn Dyes

Over Yonder Table Topper



Finished Quilt Size: 39½" x 39½"
A Free Project Sheet from



49 West 37th Street, New York, NY 10018
tel: 212-686-5194 • fax: 212-532-3525
Toll-free: 800-294-9495
www.henryglassfabrics.net

facebook

Kim Diehl's Yarn Dyes Over Yonder Table Topper

Finished Quilt Size: 39½" x 39½"

PROJECT NOTES

The featured quilt uses Kim's woven yarn dyes (originally included in her Helping Hands collection), paired with an additional black print from her Ebony and Onyx line to complete the quilt design.

MATERIALS

2 fat quarters (18" x 21") of cream check for patchwork and sashing (6891Y-44)
6 fat quarters *total* of assorted plaids for patchwork (6885Y-77, 6886Y-66, 6887Y-30, 6888Y-33, 6889Y-11, 6890Y-88)
2 fat quarters of brown plaid for sashing (6884Y-33)
½ yard of black print of choice for sashing posts and binding
1½ yards of backing fabric of choice
46" x 46" square of batting
Standard sewing and quilting supplies

CUTTING

Cut all pieces across the width of the fabric in the order given unless otherwise noted.

From the two fat quarters of cream check, cut:

14 squares, 4⅞" x 4⅞"; cut each square in half diagonally *once* to yield 2 triangles (total of 28)
24 rectangles, 1½" x 4½"

From the 6 fat quarters of assorted plaids, cut a combined total of:

50 squares, 4⅞" x 4⅞"; cut each square in half diagonally *once* to yield 2 triangles (combined total of 100)

From the 2 fat quarters of brown plaid, cut:

88 rectangles, 1½" x 4½"

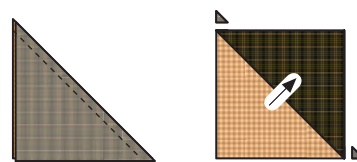
From the black print, cut:

2 strips, 1½" x 42"; crosscut into 49 squares, 1½" x 1½"
4 binding strips, 2½" x 42"

PIECING THE HALF-SQUARE-TRIANGLE UNITS

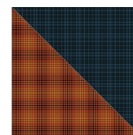
Sew all pieces with right sides together and a ¼" seam allowance unless otherwise noted. Press the seam allowances as indicated by the arrows or otherwise directed. When stitching her project, Kim considered the flat, smooth side of the plaids and check to be the right side of the fabric.

- 1 Layer a cream check and an assorted print 4⅞" triangle together. Stitch the pair along the long diagonal edges, taking care not to stretch the fabric. Press. Trim away the dog-ear points. Repeat for a total of 28 pieced cream half-square-triangle units measuring 4½" square, including the seam allowances.



Make 28 cream units,
4½" x 4½".

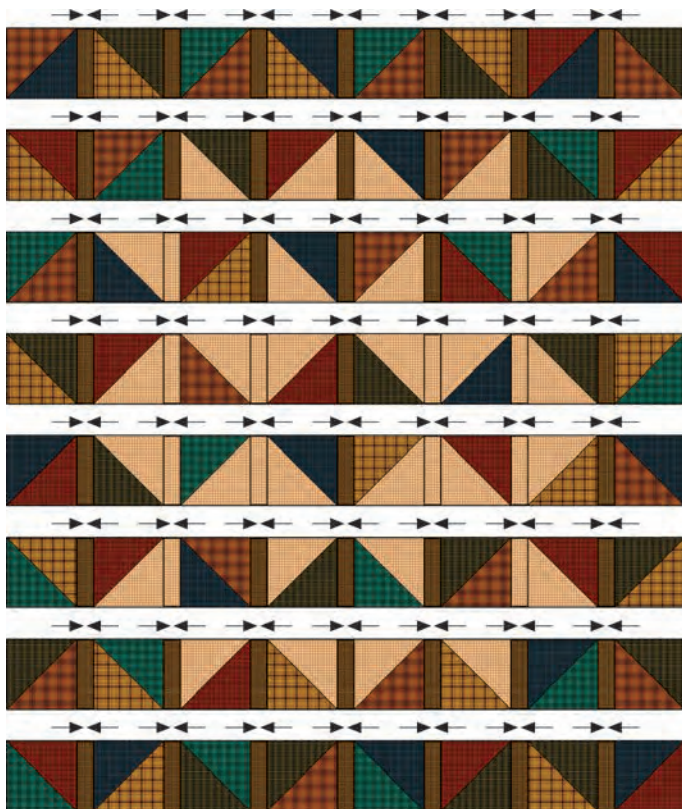
- 2 Choosing the plaids randomly, use the remaining assorted print 4⅞" triangles to repeat step 1 and piece 36 multi-colored half-square-triangle units measuring 4½" square, including the seam allowances. Press the seam allowances to one side, in whichever direction you choose.



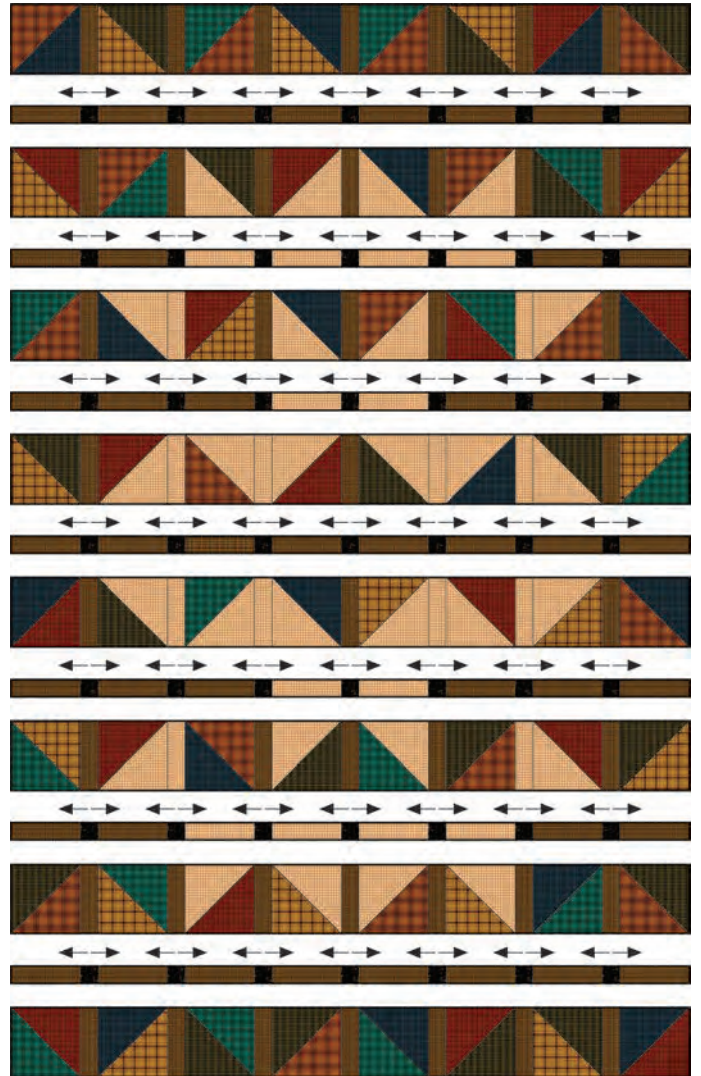
Make 36 multicolored units,
4½" x 4½".

PIECING THE QUILT TOP

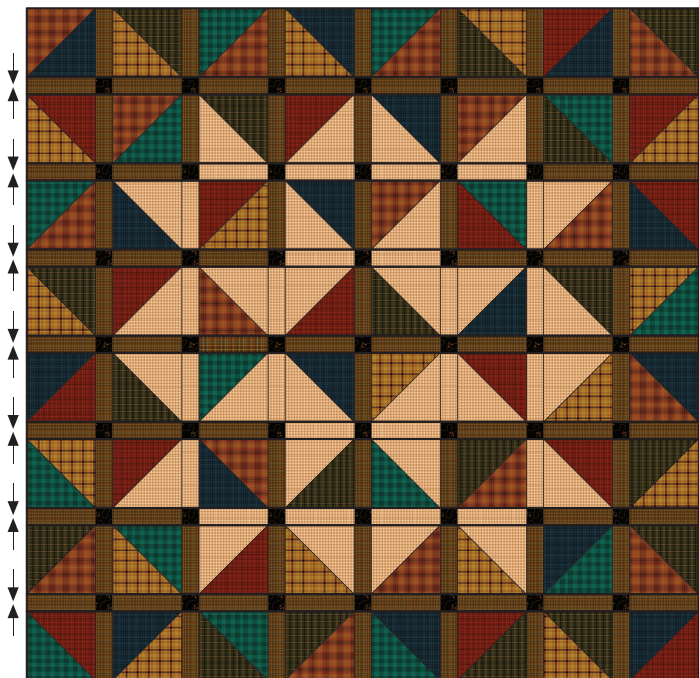
- 1 Referring to the illustration for placement of the cream half-square-triangle units, lay out the cream and multi-colored half-square-triangle units in eight horizontal rows of eight units each. Again using the illustration as a guide, lay out a brown or cream $1\frac{1}{2}$ " x $4\frac{1}{2}$ " rectangle between each half-square-triangle unit. Join the pieces in each row. Press. The pieced half-square-triangle rows should measure $4\frac{1}{2}$ " x $39\frac{1}{2}$ ", including the seam allowances.



- 2 Using the illustration for color placement, lay out the cream and brown $1\frac{1}{2}$ " x $4\frac{1}{2}$ " rectangles and the black $1\frac{1}{2}$ " squares between the half-square-triangle rows to form the sashing rows. Join the pieces in each sashing row. Press. The pieced sashing rows should measure $1\frac{1}{2}$ " x $39\frac{1}{2}$ ", including the seam allowances.



- 3 Join the half-square-triangle rows and the sashing rows to complete the quilt top. Press.



COMPLETING THE QUILT

Layer and baste the quilt top, batting, and backing. Quilt the layers. Join the black binding strips to make one length, and use it to bind the quilt.

Kim Diehl's Yarn Dyes

Fabrics in the Collection



6884Y-33



6885Y-77



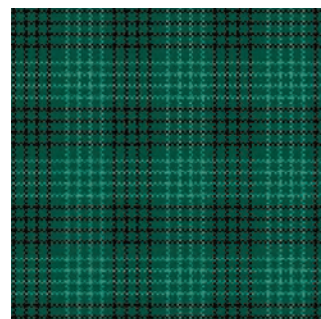
6886Y-66



6887Y-30



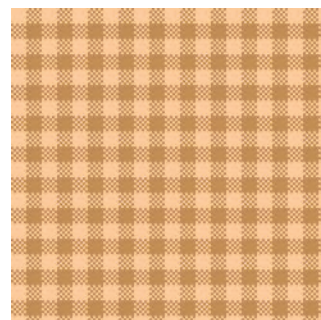
6888Y-33



6889Y-11



6890Y-88



6891Y-44

Every effort has been made to ensure that all projects are error free. All the information is presented in good faith, however no warranty can be given nor results guaranteed as we have no control over the execution of instructions. Therefore, we assume no responsibility for the use of this information or damages that may occur as a result. When errors are brought to our attention, we make every effort to correct and post a revision as soon as possible. Please make sure to check www.henryglassfabrics.com for pattern updates prior to starting the project. We also recommend that you test the project prior to cutting for kits. Finally, all free projects are intended to remain free to you and are not for resale or other forms of distribution.

