

Misty Morning

.....
A Free Project Sheet
.....
NOT FOR RESALE
.....

By Barb Tourtillotte

Quilt Design by Heidi Pridemore



Quilt 2

Skill Level: Advanced Beginner



Henry Glass & Co., Inc.



facebook

Finished Quilt Size: 59" x 74"

49 West 37th Street, New York, NY 10018

tel: 212-686-5194 fax: 212-532-3525

Toll Free: 800-294-9495

www.henryglassfabrics.net

Please check our website for pattern updates before starting this project.

MISTY MORNING

Quilt 2

Finished Quilt Size: 59" x 74"

Fabrics in the Collection



Cabbage Rose
Gray/Yellow – 9963-90



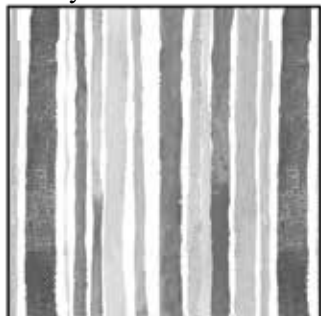
Cabbage Rose
Black/Yellow – 9963-94



Cabbage Rose
Black/Gray – 9963-99



Watercolor Stripe
Yellow/White – 9964-44



Watercolor Stripe
Gray/White – 9964-90



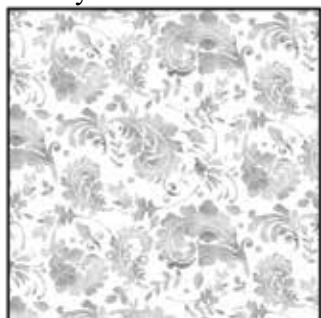
Geometric Dots
Multi – 9965-94



Delicate Vine
Yellow – 9966-44



Delicate Vine
Light Gray – 9966-90



Watercolor Paisley
Gray/White – 9967-90



Watercolor Paisley
Black/Gray – 9967-99



Leaves
Black/Yellow – 9968-94

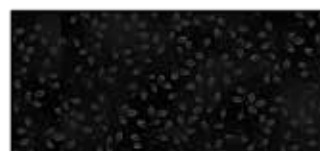


Daisy
Black/Yellow – 9969-94

Select Fabrics from
Folio Basics



Pale Gray
7755-91



Black
7755-99

MISTY MORNING

Quilt 2

Page 3

Materials

¼ yard	Geometric Dots - Multi (A)	9965-94
2 ½ yards	Delicate Vine - Light Gray (B)	9966-90
¾ yard	Watercolor Paisley - Black/Gray (C)	9967-99
¾ yard	Cabbage Rose - Gray/Yellow (D)	9963-90
¼ yard	Cabbage Rose - Black/Gray (E)	9963-99
¾ yard	Leaves - Black/Yellow (F)	9968-94
1 yard	Delicate Vine - Yellow (G)	9966-44
⅜ yard	Watercolor Stripe - Gray/White (H)	9964-90
1 ¼ yards	Cabbage Rose - Black/Yellow (I)	9963-94
⅝ yard	Watercolor Stripe - Yellow/White (J)	9964-44*
4 ¾ yards	Daisy - Black/Yellow (Backing)	9969-94

*Includes binding

Cutting Instructions

Please note: All strips are cut across the width of fabric (WOF) from selvage to selvage edge unless otherwise noted.

From the Geometric Dots - Multi (A), cut:

- (1) 5 ½" x WOF strip. Sub-cut (6) 5 ½" squares.

From the Delicate Vine - Light Gray (B), cut:

- (21) 3" x WOF strips. Sub-cut (288) 3" squares
- (7) 3" x WOF strips. Sub-cut (48) 3" x 5 ½" strips.

From the Watercolor Paisley - Black/Gray (C), cut:

- (4) 3" x WOF strips. Sub-cut (24) 3" x 5 ½" strips.
- (4) 3" x WOF strips. Sub-cut (48) 3" squares.

From the Cabbage Rose - Gray/Yellow (D), cut:

- (4) 5 ½" x WOF strips. Sub-cut (24) 5 ½" squares.

From the Cabbage Rose - Black/Gray (E), cut:

- (1) 5 ½" x WOF strip. Sub-cut (6) 5 ½" squares.

From the Leaves - Black/Yellow (F), cut:

- (4) 3" x WOF strips. Sub-cut (24) 3" x 5 ½" strips.
- (4) 3" x WOF strips. Sub-cut (48) 3" squares.

From the Delicate Vine - Yellow (G), cut:

- (4) 5 ½" x WOF strips. Sub-cut (24) 5 ½" squares.
- (4) 1 ½" x WOF strips. Sew the strips together end to end with diagonal seams and cut (2) 1 ½" x 62 ½" strips.
- (3) 1 ½" x WOF strips. Sew the strips together end to end with diagonal seams and cut (2) 1 ½" x 49 ½" strips.

From the Watercolor Stripe - Gray/White (H), cut:

- (3) 1 ½" x WOF strips. Sew the strips together end to end with diagonal seams and cut (2) 1 ½" x 60 ½" strips.
- (3) 1 ½" x WOF strips. Sew the strips together end to end with diagonal seams and cut (2) 1 ½" x 47 ½" strips.

From the Cabbage Rose - Black/Yellow (I), cut:

- (4) 5 ½" x WOF strips. Sew the strips together end to end with diagonal seams and cut (2) 5 ½" x 64 ½" strips.
- (3) 5 ½" x WOF strips. Sew the strips together end to end with diagonal seams and cut (2) 5 ½" x 59 ½" strips.

From the Watercolor Stripe - Yellow/White (J), cut :

- (7) 2 ½" x WOF strips for the binding.

From the Daisy - Black/Yellow (Backing), cut:

- (2) 82" x WOF strips for the backing. Sew the strips together and trim to make the 67" x 82" back.

Block Assembly

Note: The arrows in figures represent the fabric print direction. Pay attention to the fabric and unit orientations when assembling the various components. Use a ¼" seam allowance with right sides together (RST) unless otherwise noted.

1. Place (1) 3" Fabric B square on the top left corner of (1) 5 ½" Fabric D square, right sides together (Fig. 1). Sew across the diagonal of the smaller square from the upper right corner to the lower left corner (Fig. 1). Flip open the triangle formed and press. Trim away the excess fabric from behind the triangle ¼" away from the sewn seam (Fig. 2).

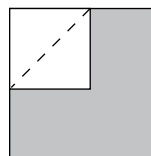


Fig. 1

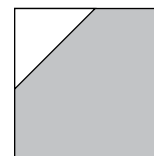


Fig. 2

2. Follow Figure 3 for the seam direction to add a 3" Fabric B square to each of the remaining corners of the 5 ½" Fabric D square to make (1) Unit 1 square (Fig. 4).
3. Repeat Steps 1-2 to make (24) Unit 1 squares total.
4. Repeat Steps 1-2 and refer to Figure 5 for fabric identification, placement, seam direction and orientation to make (24) Unit 2 squares.

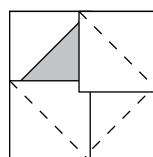


Fig. 3

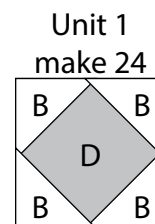


Fig. 4

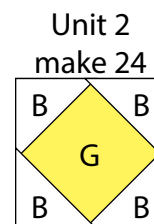


Fig. 5

5. Place (1) 3" Fabric B square on the left side of (1) 3" x 5 1/2" Fabric C strip, right sides together (Fig. 6). Sew across the diagonal of the square from the upper right corner to the lower left corner (Fig. 6). Flip open the triangle formed and press. Trim away the excess fabric from behind the triangle, leaving a 1/4" seam allowance (Fig. 7).

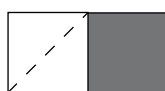


Fig. 6

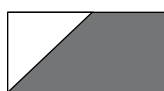


Fig. 7

6. Place another 3" Fabric B square on the right side of the 3" x 5 1/2" Fabric C strip, right sides together (Fig. 8). Sew across the diagonal of the square from the upper left corner to the lower right corner (Fig. 8). Flip open the triangle formed and press. Trim away the excess fabric from behind the triangle, leaving a 1/4" seam allowance to make (1) Unit 3 strip (Fig. 9).

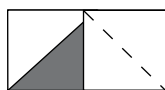


Fig. 8

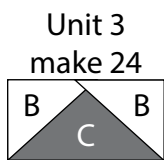


Fig. 9

7. Repeat Steps 5-6 to make (24) Unit 3 strips total.

8. Repeat Steps 5-6 and refer to Figures 10-12 for fabric identification, placement, seam direction and orientation to make (24) Unit 4 strips, (24) Unit 5 strips and (24) Unit 6 strips.

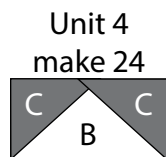


Fig. 10

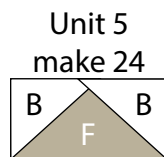


Fig. 11

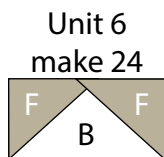


Fig. 12

9. Sew (1) Unit 3 strip to the top of (1) Unit 4 strip lengthwise along the Fabric C sides to make (1) 5 1/2" Unit 7 square (Fig. 13). Repeat to make (24) Unit 7 squares total.

10. Sew (1) Unit 5 strip to the top of (1) Unit 6 strip lengthwise along the Fabric F sides to make (1) 5 1/2" Unit 8 square (Fig. 14). Repeat to make (24) Unit 8 squares total.

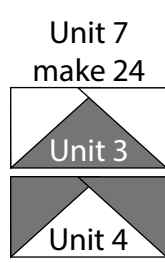


Fig. 13

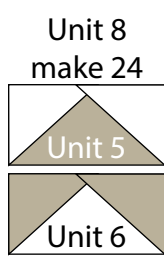


Fig. 14

11. Sew (1) Unit 1 square to each side of (1) Unit 7 square to make the top row. Repeat to make the bottom row. Sew (1) Unit 7 square to each side of (1) 5 1/2" Fabric A square to make the middle row. Sew the (3) rows together lengthwise to make (1) 15 1/2" Block One square (Fig. 15). Repeat to make (6) Block One squares total.

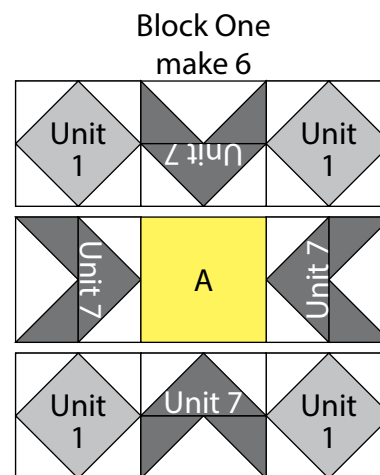


Fig. 15

12. Sew (1) Unit 2 square to each side of (1) Unit 8 square to make the top row. Repeat to make the bottom row. Sew (1) Unit 8 square to each side of (1) 5 1/2" Fabric E square to make the middle row. Sew the (3) rows together lengthwise to make (1) 15 1/2" Block Two square (Fig. 16). Repeat to make (6) Block Two squares total.

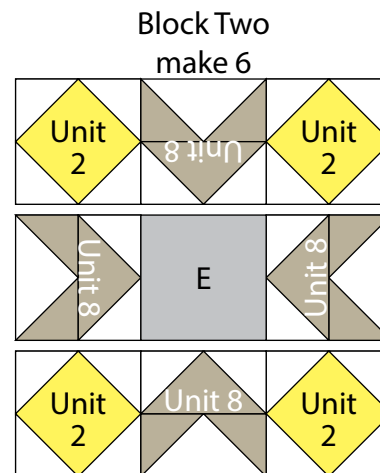


Fig. 16

13. Sew (1) Block One square to each side of (1) Block Two square to make Row One. Repeat to make Row Three.

14. Sew (1) Block Two square to each side of (1) Block One square to make Row Two. Repeat to make Row Four.

MISTY MORNING

Quilt 2

15. Sew together the (4) rows from Steps 13-14, lengthwise and in numerical order from top to bottom, to make the 45 ½" x 60 ½" Center Block (Fig. 17).

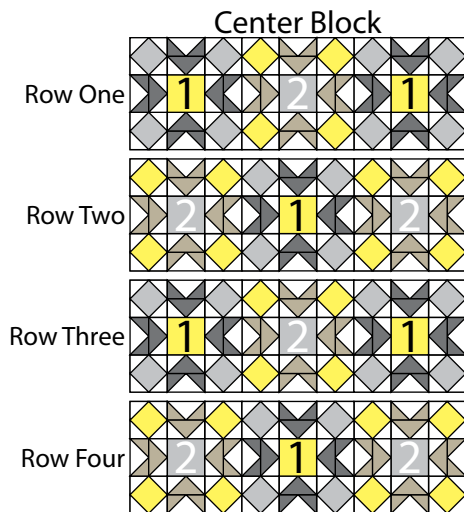


Fig. 17

Quilt Top Assembly

(Follow the Quilt Layout while assembling the quilt top.)

16. Sew (1) 1 ½" x 60 ½" Fabric H strip to each side of the Center Block. Sew (1) 1 ½" x 47 ½" Fabric H strip to the top and to the bottom of the Center Block.

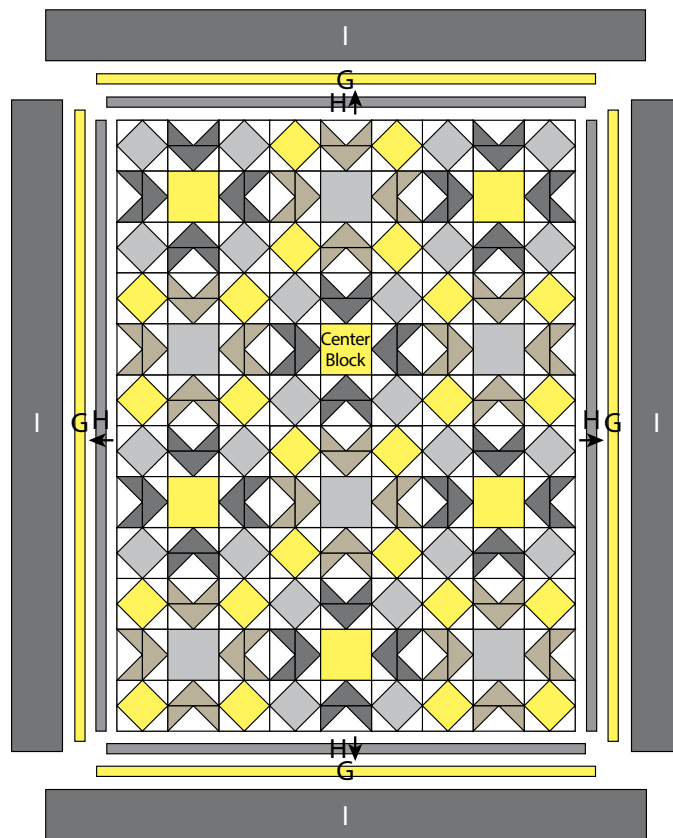
17. Sew (1) 1 ½" x 62 ½" Fabric G strip to each side of the Center Block. Sew (1) 1 ½" x 49 ½" Fabric G strip to the top and to the bottom of the Center Block.

18. Sew (1) 5 ½" x 64 ½" Fabric I strip to each side of the Center Block. Sew (1) 5 ½" x 59 ½" Fabric I strip to the top and to the bottom of the Center Block to make the quilt top.

19. Layer and quilt as desired.

20. Sew the (7) 2 ½" x WOF Fabric J strips together, end to end with 45-degree seams, to make the binding. Fold this long strip in half lengthwise with wrong sides together and press.

21. Bind as desired.



Every effort has been made to ensure that all projects are error free. All the information is presented in good faith, however no warranty can be given nor results guaranteed as we have no control over the execution of instructions. Therefore, we assume no responsibility for the use of this information or damages that may occur as a result. When errors are brought to our attention, we make every effort to correct and post a revision as soon as possible. Please make sure to check www.henryglassfabrics.net for pattern updates prior to starting the project. We also recommend that you test the project prior to cutting for kits. Finally, all free projects are intended to remain free to you and are not for resale.