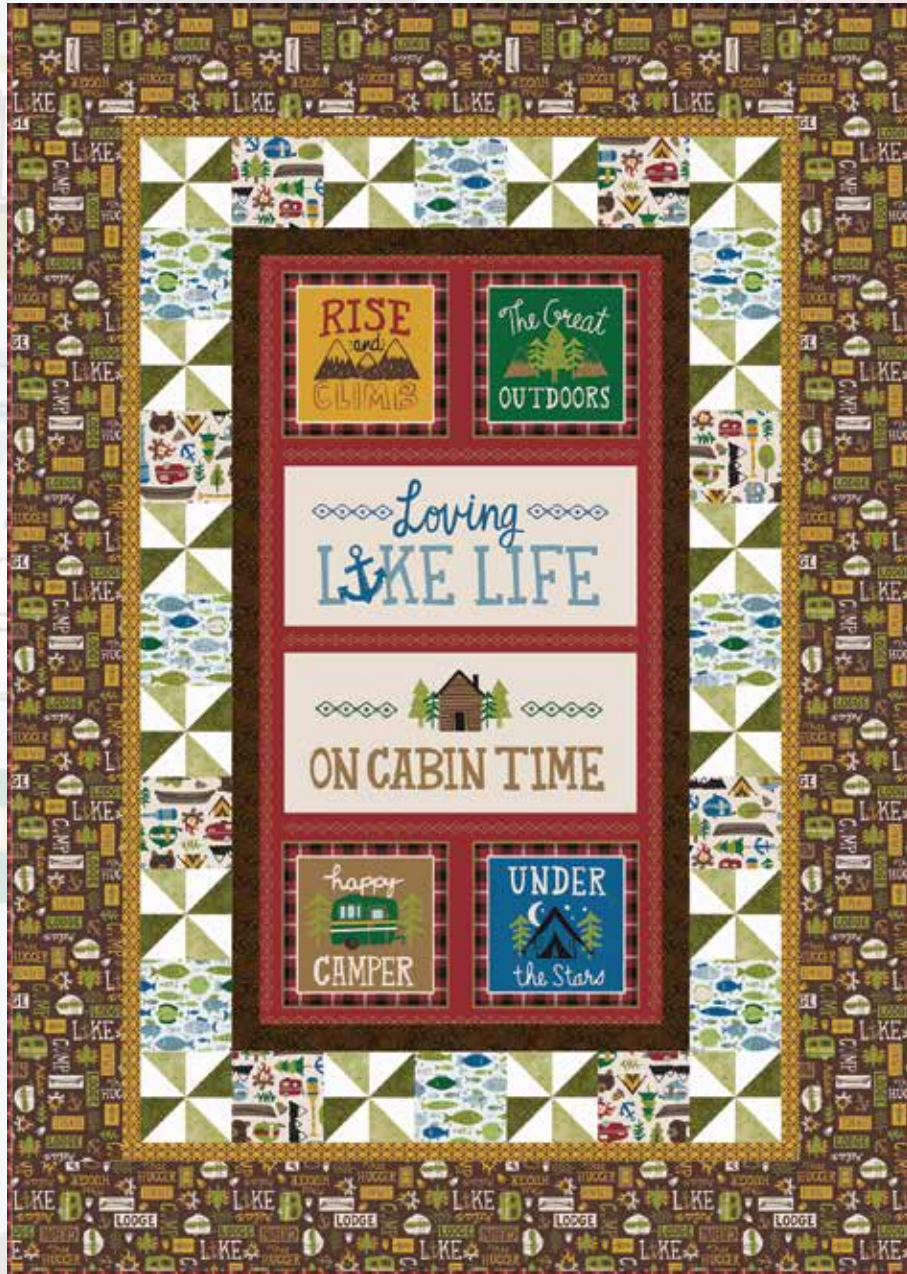


# Loving Camp Life

• A Free Project Sheet  
• NOT FOR RESALE

By Emily Dumas



Quilt Design by Heidi Pridemore

Quilt 1

Skill Level: Advanced Beginner

 Henry Glass & Co., Inc.



[facebook](#)

Finished Quilt Size: 49" x 69"  
49 West 37th Street, New York, NY 10018  
tel: 212-686-5194 fax: 212-532-3525  
Toll Free: 800-294-9495  
[www.henryglassfabrics.net](http://www.henryglassfabrics.net)

Please check our website for pattern updates before starting this project.

# LOVING CAMP LIFE

Quilt 1

## Fabrics in the Collection



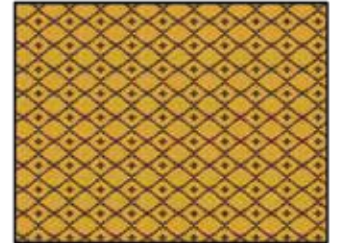
Canoes and Camp Motifs  
Beige – 177-40



Words and Campers  
Brown – 178-33



Words and Campers  
Dark Blue – 178-77



Geometric  
Gold – 179-44



Camp Patches  
Red – 180-88



Animal Faces  
Gold – 181-44



Plaid  
Red – 182-88



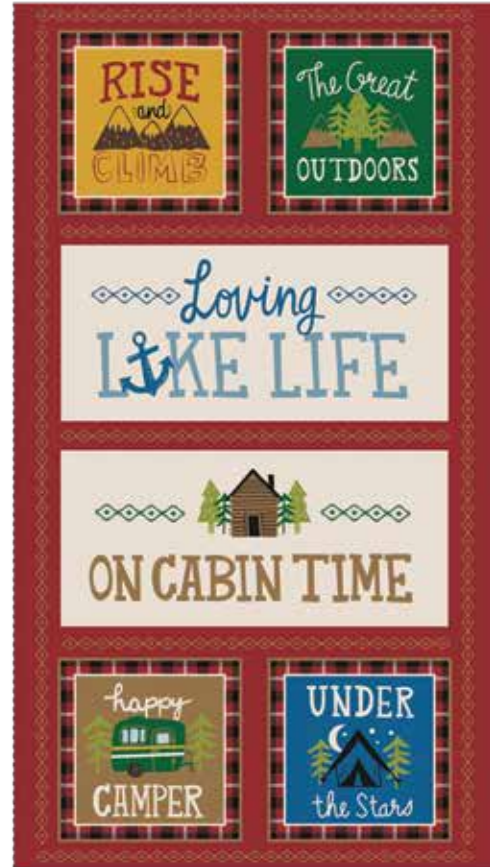
Campers  
Light Blue – 183-11



Trees  
Multi – 184-6



Fish  
Light Blue – 185-11



24 inch Lake Panel  
Red – 187P-88



Fishing Lures  
Green – 186-66



Brown  
7755-38

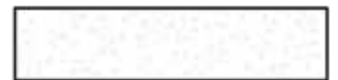


Grape Green  
7755-60



Dark Olive  
7755-65

Select Fabrics from  
Folio Basics



White on White  
7755-01

## Quilt 1

### Materials

1 panel	24 inch Lake Panel - Red (A)	187P-88
½ yard	Folio Basics - Brown (B)	7755-38
⅜ yard	Canoes and Camp Motifs - Beige (C)	177-40
⅜ yard	Fish - Light Blue (D)	185-11
¼ yard	Folio Basics - Grape Green (E)	7755-60
⅜ yard	Folio Basics - White on White (F)	7755-01
¼ yard	Folio Basics - Dark Olive (G)	7755-65
⅓ yard	Geometric - Gold (H)	179-44
1 ¼ yards	Words and Campers - Brown (I)	178-33
½ yard	Plaid - Red (J)	182-88*
3 ¼ yards	Fishing Lures - Green (Backing)	186-66

\*Includes binding

### Cutting Instructions

Please note: All strips are cut across the width of fabric (WOF) from selvage to selvage unless otherwise noted.

#### From the 24 inch Lake Panel - Red (A):

- Fussy cut (1) 22 ½" x 42 ½" rectangle, centered on the panel.

#### From the Folio Basics - Brown (B), cut:

- (2) 2 ½" x 42 ½" WOF strips, piece as needed.
- (2) 2 ½" x 26 ½" WOF strips.

#### From the Canoes and Camp Motifs - Beige (C), cut:

- (2) 5 ½" x WOF strips. Sub-cut (8) 5 ½" squares.

#### From the Fish - Light Blue (D), cut:

- (2) 5 ½" x WOF strips. Sub-cut (8) 5 ½" squares.

#### From the Folio Basics - Grape Green (E), cut:

- (2) 3 ⅜" x WOF strips. Sub-cut (16) 3 ⅜" squares.

#### From the Folio Basics - White on White (F), cut:

- (3) 3 ⅜" x WOF strips. Sub-cut (32) 3 ⅜" squares.

#### From the Folio Basics - Dark Olive (G), cut:

- (2) 3 ⅜" x WOF strips. Sub-cut (16) 3 ⅜" squares.

#### From the Geometric - Gold (H), cut:

- (3) 1 ½" x WOF strips. Sew the strips together end to end with diagonal seams and cut (2) 1 ½" x 55 ½" strips.
- (2) 1 ½" x 37 ½" WOF strips.

#### From the Words and Campers - Brown (I), cut:

- (3) 6 ½" x WOF strips. Sew the strips together end to end with diagonal seams and cut (2) 6 ½" x 57 ½" strips.
- (3) 6 ½" x WOF strips. Sew the strips together end to end with diagonal seams and cut (2) 6 ½" x 49 ½" strips.

#### From the Plaid - Red (J), cut:

- (6) 2 ½" x WOF strips for the binding.

#### From the Fishing Lures - Green (Backing), cut:

- (2) 57" x WOF strips for the backing. Sew the strips together and trim to make the 57" x 77" back.

### Block Assembly

Note: The arrows in figures represent the fabric print direction. Pay attention to the fabric and unit orientations when assembling the various components. Use a ¼" seam allowance with right sides together (RST) unless otherwise noted.

1. Sew (1) 2 ½" x 42 ½" Fabric B strip to each side of the 22 ½" x 42 ½" Fabric A rectangle. Sew (1) 2 ½" x 26 ½" Fabric B strip to the top and to the bottom of the Fabric A rectangle to make the Center Block (Fig. 1). **Trim the block to measure 25 ½" x 45 ½"**.

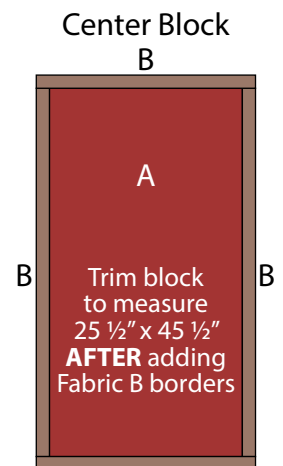


Fig. 1 B

2. Place (1) 3 ⅜" Fabric G square on top of (1) 3 ⅜" Fabric F square, right sides together. Draw a line across the diagonal of the top square (Fig. 2). Sew ¼" away from each side of the drawn diagonal line (Fig. 2). Cut the (2) squares apart on the drawn diagonal line (Fig. 3) to make (2) half-square triangles. Trim the half-square triangles to measure 3" square to make (2) Unit 1 squares (Fig. 4). Repeat to make (32) Unit 1 squares total.

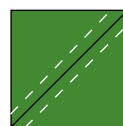


Fig. 2



Fig. 3

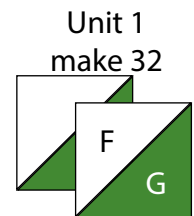


Fig. 4

3. Repeat Step 2 and refer to Figure 5 for fabric identification and placement to make (32) Unit 2 squares.

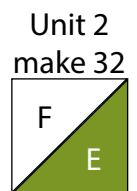


Fig. 5

# LOVING CAMP LIFE

## Quilt 1

4. Sew (1) Unit 2 square to the left side of (1) Unit 1 square to make the top row. Sew (1) Unit 1 square to the left side of (1) Unit 2 square to make the bottom row. Sew together the (2) rows lengthwise to make (1) 5 1/2" Unit 3 square (Fig. 6). Repeat to make (16) Unit 3 squares total.

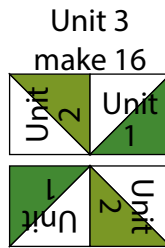


Fig. 6

5. Follow Figure 7 and sew together (3) 5 1/2" Fabric D squares, (4) Unit 3 squares and (2) 5 1/2" Fabric C squares to make (1) Side Border. Repeat to make a second Side Border.

Side Border  
make 2



Fig. 7

6. Follow Figure 8 and sew together (4) Unit 3 squares, (2) 5 1/2" Fabric C squares and (1) 5 1/2" Fabric D square to make the Top Border. Repeat to make the Bottom Border.

Top/Bottom Border  
make 2

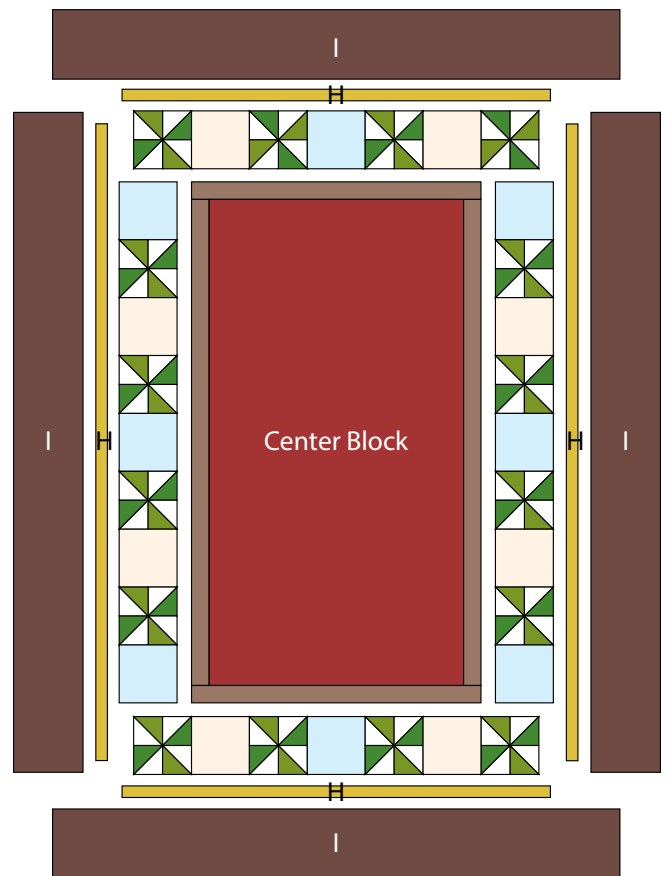


Fig. 8

### Quilt Top Assembly

(Follow the Quilt Layout while assembling the quilt top.)

- Sew (1) Side Border to each side of the Center Block. Sew the Top Border and Bottom Border to the top and to the bottom of the Center Block.
- Sew (1) 1 1/2" x 55 1/2" Fabric H strip to each side of the Center Block. Sew (1) 1 1/2" x 37 1/2" Fabric H strip to the top and to the bottom of the Center Block.
- Sew (1) 6 1/2" x 57 1/2" Fabric I strip to each side of the Center Block. Sew (1) 6 1/2" x 49 1/2" Fabric I strip to the top and to the bottom of the Center Block to make the quilt top.
- Layer and quilt as desired.
- Sew the (6) 2 1/2" x WOF Fabric J strips together, end to end with 45-degree seams, to make the binding. Fold this long strip in half lengthwise with wrong sides together and press.
- Bind as desired.



Quilt Layout

Every effort has been made to ensure that all projects are error free. All the information is presented in good faith, however no warranty can be given nor results guaranteed as we have no control over the execution of instructions. Therefore, we assume no responsibility for the use of this information or damages that may occur as a result. When errors are brought to our attention, we make every effort to correct and post a revision as soon as possible. Please make sure to check [www.henryglassfabrics.net](http://www.henryglassfabrics.net) for pattern updates prior to starting the project. We also recommend that you test the project prior to cutting for kits. Finally, all free projects are intended to remain free to you and are not for resale.