

Winter Joy

by Hannah West from Lucky Day

Free Project Sheet
NOT FOR RESALE



Quilt designed by Denise Russell.

Quilt 1

Quilt size: 68" x 82"

Skill Level: Advanced Beginner



Henry Glass & Co., Inc.



facebook

49 West 37th Street
New York, NY 10018

Tel: 212-686-5194 - Fax: 212-532-3525

Toll Free: 800-294-9495

www.henryglassfabrics.com

Please check our website for pattern updates
before starting this project.

Winter Joy - Fabrics in the Collection



2864P-66 Winter Joy Panel - Green



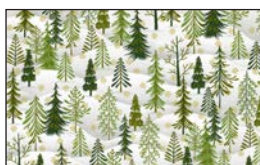
2863-33 Border Stripe - Cream



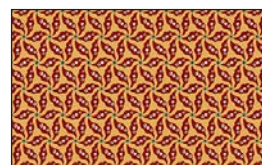
2854-33 Downhill
Snowmen - Cream



2855-33 Allover
Novelty - Cream



2856-33 Winter Trees
Cream



2857-44 Poinsettia
Yellow



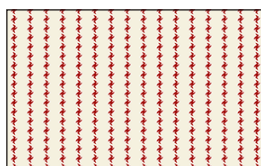
2857-88 Poinsettia
Red



2858-33 Snowflake
Confetti - Cream



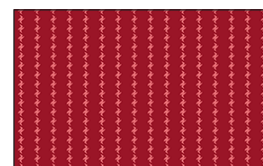
2858-88 Snowflake
Confetti - Red



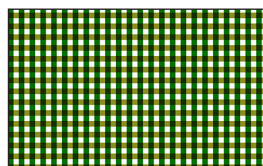
2859-33 Stripe
Cream



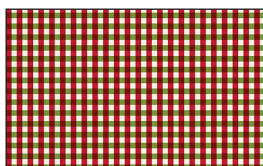
2859-66 Stripe
Green



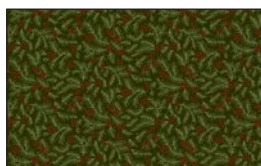
2859-88 Stripe
Red



2860-66 Check
Green



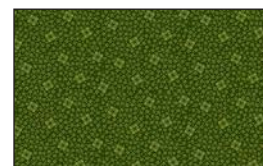
2860-88 Check
Red



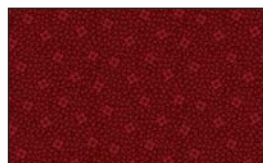
2861-66 Fir Sprigs
Green



2861-88 Fir Sprigs
Red



2862-66 Tossed
Packages - Green



2862-88 Tossed
Packages - Red

Selected fabric from the
Folio Basics Collection



7755-04
Off White

Winter Joy - Quilt 1

Page 1

Materials

Yardages and cutting instructions are based on 42" of usable fabric width

1/4 yard 2855-33 Allover Novelty - Cream
1/4 yard 2856-33 Winter Trees - Cream
3/8 yard 2857-44 Poinsettia - Yellow
3/8 yard 2860-88 Check - Red
1/2 yard 2854-33 Downhill Snowmen - Cream
1/2 yard 2858-88 Snowflake Confetti - Red
1/2 yard 2860-66 Check - Green
1/2 yard 2861-66 Fir Sprigs - Green
2/3 yard 2862-88 Tossed Packages - Red
7/8 yard 2862-66 Tossed Packages - Green
7/8 yard 2858-33 Snowflake Confetti - Cream
1-5/8 yards 7755-04 Folio Basic - Off White
4 yards 2863-33 Border Stripe - Cream
5-1/8 yards 2857-88 Poinsettia - Red for backing

Cut Fabrics

Note: All strips are cut across the width of the fabric (WOF) from selvage to selvage unless otherwise indicated.

From 2855-33 Allover Novelty – Cream:

*Cut one 6-1/2" x WOF strip. Sub-cut six 6-1/2" squares.

From 2856-33 Winter Trees – Cream:

*Cut one 6-1/2" x WOF strip. Sub-cut four 6-1/2" squares.

From 2857-44 Poinsettia – Yellow:

*Cut seven 1-1/2" x WOF strips for border 2.

From 2860-88 Check – Red:

*Cut three 2-5/8" x WOF strips. Sub-cut forty 2-5/8" squares.

From 2854-33 Downhill Snowmen – Cream:

*Cut two 6-1/2" x WOF strips. Sub-cut ten 6-1/2" squares.

From 2858-88 Snowflake Confetti – Red:

*Cut four 3-7/8" x WOF strips. Sub-cut forty 3-7/8" squares; cut once diagonally. (A)

From 2860-66 Check – Green:

*Cut eight 1-1/2" x WOF strips for border 5.

From 2861-66 Fir Sprigs – Green:

*Cut eight 1-1/2" x WOF strips for border 4.

From 2862-88 Tossed Packages – Red:

*Cut eight 2-1/2" x WOF strips for binding.

From 2862-66 Tossed Packages – Green:

*Cut one 2" x WOF strip. Sub-cut twelve 2" squares.

*Cut three 2-5/8" x WOF strips. Sub-cut forty 2-5/8" squares.

*Cut four 3-7/8" x WOF strips. Sub-cut forty 3-7/8" squares; cut once diagonally. (B)

From 2858-33 Snowflake Confetti – Cream:

*Cut seven 3-1/2" x WOF strips. Sub-cut eighty 3-1/2" squares.

From 7755-04 Folio Basic - Off White:

*Cut four 2" x WOF strips. Sub-cut twelve 2" x 12-1/2" strips.

*Cut five 4-1/4" x WOF strips. Sub-cut forty 4-1/4" squares; cut twice diagonally. (C)

*Cut one 12-1/2" x WOF strip. Sub-cut nineteen 2" x 12-1/2" strips (for a total of 31).

*Cut seven 1-1/2" x WOF strips for border 1.

From 2863-33 Border Stripe – Cream:

*Cut two 3-1/2" x LOF strips for border 3. (They will be trimmed to size later.)

Winter Joy - Quilt 1

Page 2

Assemble Blocks

Note: Measurements include 1/4" seam allowances. Sew with right sides together unless otherwise stated. If no direction is specified, press the seam toward the darker fabric.

 <p>Block 1 – Make 6 2855-33 Allover Novelty – Cream 2862-66 Tossed Packages – Green 2860-88 Check – Red 7755-04 Folio Basic - Off White 2858-33 Snowflake Confetti – Cream</p>	 <p>Block 2 – Make 4 2856-33 Winter Trees – Cream 2862-66 Tossed Packages – Green 2860-88 Check – Red 7755-04 Folio Basic - Off White 2858-33 Snowflake Confetti – Cream</p>	 <p>Block 3 – Make 10 2854-33 Downhill Snowmen – Cream 2858-88 Snowflake Confetti – Red 2862-66 Tossed Packages – Green 7755-04 Folio Basic - Off White 2858-33 Snowflake Confetti – Cream</p>
--	---	---

Table 1. Block colorway and quantity.

1. Sew a 7755-04 Folio Basic - Off White triangle C to a 2-5/8" 2860-88 Check – Red square. Press open. Sew another triangle C to the adjacent side of the Red square. Press open. Similarly, sew a 2862-66 Tossed Packages – Green triangle B to opposite sides of this unit (*figure 1*). Repeat to make forty 3-1/2" x 6-1/2" strips.



Figure 1 – Make (40) 3-1/2" x 6-1/2" units.

2. Sew one Step 1 unit to opposite sides of a 6-1/2" 2855-33 Allover Novelty – Cream square (*figure 2*). Press the seams toward the center. Make six center strips. Repeat this step with the 6-1/2" 2856-33 Winter Trees – Cream squares.

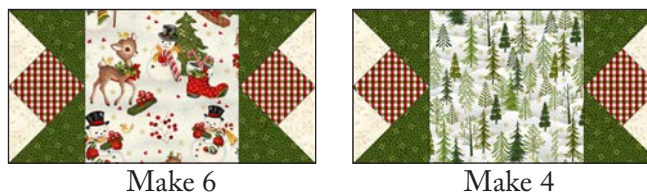


Figure 2

3. Sew a 3-1/2" 2858-33 Snowflake Confetti – Cream square to opposite sides of the remaining Step 1 units (*figure 3*). Press the seams away from the center. Make a total of twenty strips.



Figure 3 – Make 20.

Winter Joy - Quilt 1

Page 3

4. Noting fabric orientation, sew a Step 3 strip to the top and one to the bottom of the Step 2 center strips and press the seams in one direction (*figure 4*). Make a total of ten 12-1/2" blocks.



Make 6 Make 4
Figure 4 – Make (10) 12-1/2" blocks.

5. Repeat Steps 1-4 with the 6-1/2" 2854-33 Down-hill Snowmen – Cream squares, the 2-5/8" 2862-66 Tossed Packages – Green squares, and the 2858-88 Snowflake Confetti – Red triangles A to make ten 12-1/2" blocks (*figure 5*).

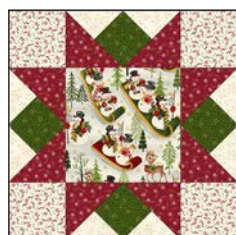


Figure 5 – Make (10) 12-1/2" blocks.

Assemble Quilt Top

6. Referring to the quilt photo for block placement, lay out four blocks and three 2" x 12-1/2" 7755-04 Folio Basic - Off White sashing strips in five rows, and join the blocks and sashing strips together in each row. Press the seams toward the sashing.

7. To make the horizontal sashing rows, sew together four 2" x 12-1/2" 7755-04 Folio Basic - Off White sashing strips and three 2" 2862-66 Tossed Packages – Green cornerstone squares. Repeat to make a total of four sashing strips. Press the seams toward the sashing.

8. Matching adjacent seams, sew block rows and horizontal sashing strips together. Press the seams in one direction.

9. For border 1, join the seven 1-1/2" 7755-04 Folio Basic - Off White strips together end to end using diagonal seams. Measure the vertical length of the quilt top through the center and cut two border strips that length. Sew one strip to each side of the quilt top and press the seams toward the border strips. Measure the width of the quilt top through the center. Cut two border strips that length and sew one to the top and one to the bottom. Press the seams toward the borders.

10. Repeat Step 9 with the seven 1-1/2" 2857-44 Poinsettia – Yellow strips to make and add border 2.

11. For border 3, measure the vertical length of the quilt top through the center and trim two 2863-33 Border Stripe – Cream border strips that length. Sew one strip to each side of the quilt top and press the seams toward the border strips. Measure the width of the quilt top through the center. Trim two 2863-33 Border Stripe – Cream border strips that length and sew one to the top and one to the bottom. Press the seams toward the borders.

12. Repeat Step 9 with the eight 1-1/2" 2861-66 Fir Sprigs – Green strips to make and add border 4.

13. Repeat Step 9 with the eight 1-1/2" 2860-66 Check – Green strips to make and add border 5.

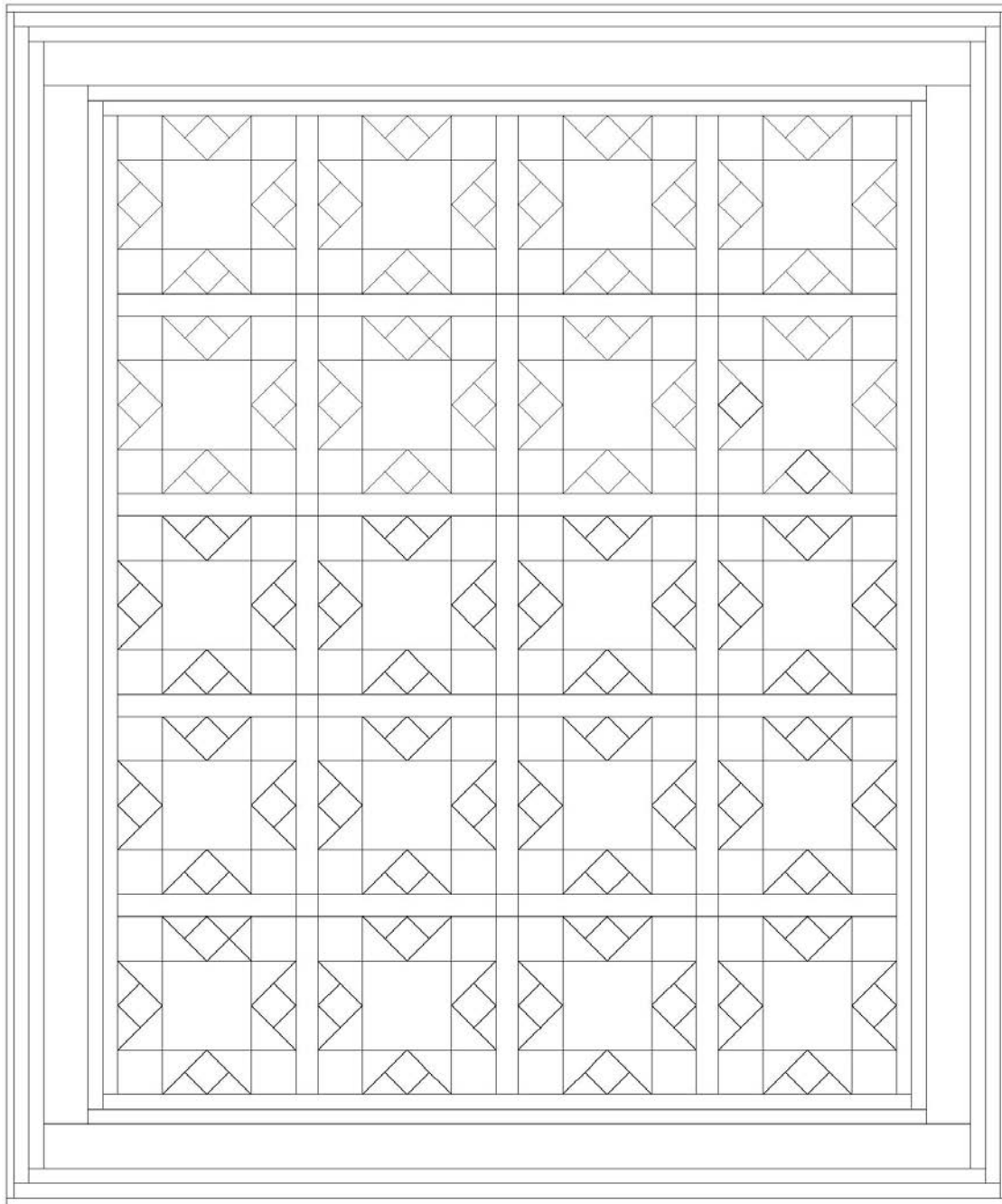
Finishing

14. Create a quilt sandwich with the batting between the quilt top and the backing. Pin or baste layers together, mark quilting design, and quilt by hand or machine. When quilting is complete, remove pins or basting, and trim batting and backing even with raw edges of the quilt top.

15. Join the eight 2-1/2" 2862-88 Tossed Packages – Red binding strips together end to end using a diagonal seam to make one long strip. Fold in half lengthwise and press. Sew binding to the edges of the quilt, mitering corners, and overlapping ends. Fold binding to the back of the quilt and stitch it in place by hand to finish.

Winter Joy - Quilt 1

Page 4



Quilt Diagram

©2021 Henry Glass & Co. Inc.

Every effort has been made to ensure that all projects are error free. All the information is presented in good faith; however, no warranty can be given nor results guaranteed as we have no control over the execution of instructions. Therefore, we assume no responsibility for the use of this information or damages that may occur as a result. When errors are brought to our attention, we make every effort to correct and post a revision as soon as possible. Please make sure to check www.henryglassfabrics.com for pattern updates prior to starting the project. We also recommend that you test the project prior to cutting for kits. Finally, all free projects are intended to remain free to you and are not for resale.