

Winter Wonderland



• A Free Project Sheet •
• NOT FOR RESALE •


By Anni Downs



Runner Design by Anni Downs

Runner

Skill Level: Advanced Beginner

 Henry Glass & Co., Inc.



facebook

Finished Runner Size: 52" x 20"
49 West 37th Street, New York, NY 10018
tel: 212-686-5194 fax: 212-532-3525
Toll Free: 800-294-9495
www.henryglassfabrics.net

Please check our website for pattern updates before starting this project.

WINTER WONDERLAND

Finished Runner Size: 52" x 20"

Runner

Fabrics in the Collection



Winter Wonderland Scene
Cream – 2303-33



Winter Wonderland Scene
Light Taupe – 2303-34



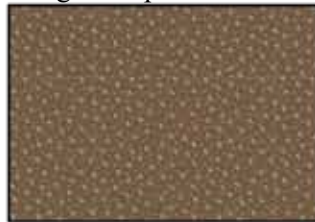
Winter Wonderland Scene
Dusty Green – 2303-66



Snow Dot - Light Blue
2304-11



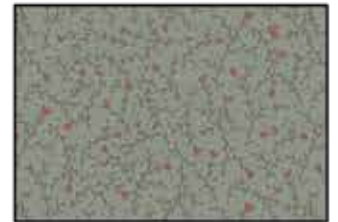
Snow Dot - Cream
2304-33



Snow Dot - Brown
2304-38



Winter Flowers
Dark Mushroom – 2305-31



Winter Flowers
Medium Blue – 2305-77



Winter Flowers - Red
2305-88



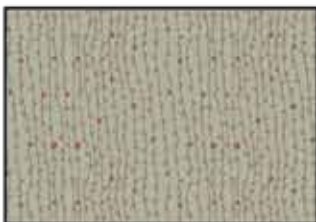
Snowflakes - Blue
2306-11



Snowflakes - Cream
2306-33



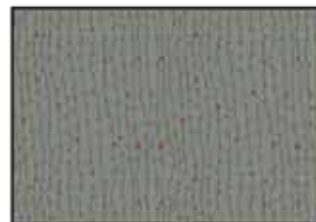
Snowflakes - Stone
2306-34



Dot Vine - Light Blue
2307-11



Dot Vine - Dusty Pink
2307-22



Dot Vine - Medium Blue
2307-77



Trees - Dark Mushroom
2308-31



Trees - Stone
2308-34



Trees - Dark Blue
2308-78



Penguins - Taupe
2309-31



Penguins - Cream
2309-33



Penguins - Dusty Green
2309-66

Runner Materials

| | | |
|-----------|---|----------|
| ¼ yard | Winter Wonderland Scene - Dusty Green (A) | 2303-66 |
| ¼ yard | Snow Dot - Light Blue (B) | 2304-11 |
| ¼ yard | Winter Flowers - Medium Blue (C) | 2305-77 |
| ¼ yard | Snowflakes - Blue (D) | 2306-11 |
| ⅝ yard | Dot Vine - Medium Blue (E) | 2307-77* |
| ¼ yard | Trees - Dark Blue (F) | 2308-78 |
| ¼ yard | Snow Dot - Cream (G) | 2304-33 |
| ¼ yard | Snowflakes - Cream (H) | 2306-33 |
| ¼ yard | Trees - Stone (I) | 2308-34 |
| ¼ yard | Snowflakes - Stone (J) | 2306-34 |
| ¼ yard | Penguins - Cream (K) | 2309-33 |
| ¼ yard | Snow Dot - Brown (L) | 2304-38 |
| ¼ yard | Dot Vine - Dusty Pink (M) | 2307-22 |
| ¼ yard | Winter Flowers - Dark Mushroom (N) | 2305-31 |
| ⅓ yard | Winter Flowers - Red (O) | 2305-88 |
| ⅛ yard | Trees - Dark Mushroom (P) | 2308-31 |
| ⅓ yard | Penguins - Dusty Green (Q) | 2309-66 |
| 1 ¾ yards | Winter Wonderland Scene - Cream (Backing) | 2303-33 |

*Includes binding

Runner Cutting Instructions

Please note: all strips are cut across the width of fabric (WOF) from selvage to selvage edge unless otherwise noted.

From the Winter Wonderland Scene - Dusty Green (A), cut:

- (1) 4 ½" x WOF strip. Sub-cut (5) 4 ½" squares.

From the Snow Dot - Light Blue (B), cut:

- (1) 4 ½" x WOF strip. Sub-cut (5) 4 ½" squares.

From the Winter Flowers - Medium Blue (C), cut:

- (1) 4 ½" x WOF strip. Sub-cut (3) 4 ½" squares.

From the Snowflakes - Blue (D), cut:

- (1) 4 ½" x WOF strip. Sub-cut (5) 4 ½" squares.

From the Dot Vine - Medium Blue (E), cut:

- (1) 4 ½" x WOF strip. Sub-cut (5) 4 ½" squares.
- (4) 2 ½" x WOF strips for the binding.

From the Trees - Dark Blue (F), cut:

- (1) 4 ½" x WOF strip. Sub-cut (5) 4 ½" squares.

From the Snow Dot - Cream (G), cut:

- (1) 4 ½" x WOF strip. Sub-cut (7) 4 ½" squares.

From the Snowflakes - Cream (H), cut:

- (1) 4 ½" x WOF strip. Sub-cut (7) 4 ½" squares.

From the Trees - Stone (I), cut:

- (1) 4 ½" x WOF strip. Sub-cut (9) 4 ½" squares.

From the Snowflakes - Stone (J), cut:

- (1) 4 ½" x WOF strip. Sub-cut (5) 4 ½" squares.

From the Penguins - Cream (K), cut:

- (1) 4 ½" x WOF strip. Sub-cut (5) 4 ½" squares.

From the Snow Dot - Brown (L), cut:

- (2) 2 ½" x WOF strips. Sub-cut (17) 2 ½" squares.

From the Dot Vine - Dusty Pink (M), cut:

- (2) 2 ½" x WOF strips. Sub-cut (28) 2 ½" squares.

From the Winter Flowers - Dark Mushroom (N), cut:

- (3) 2 ½" x WOF strips. Sub-cut (26) 2 ½" squares.

From the Winter Flowers - Red (O), cut:

- (3) 2 ½" x WOF strips. Sub-cut (33) 2 ½" squares.

From the Trees - Dark Mushroom (P), cut:

- (1) 2 ½" x WOF strip. Sub-cut (12) 2 ½" squares.

From the Penguins - Dusty Green (Q), cut:

- (1) 4 ½" x WOF strip. Sub-cut (4) 4 ½" squares.
- (1) 2 ½" x WOF strip. Sub-cut (16) 2 ½" squares.

From the Winter Wonderland Scene - Cream (Backing), cut:

- (1) 60" x 28" strip for the back.

Block Assembly

1. Place (1) 2 ½" Fabric L square on the top left corner of (1) 4 ½" Fabric G square, right sides together (Fig. 1). Sew across the diagonal of the smaller square from the upper right corner to the lower left

corner (Fig. 1). Flip open the triangle formed and press (Fig. 2). Trim away the excess fabric from behind the triangle ¼" away from the sewn seam.

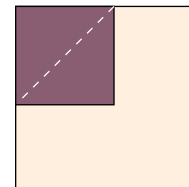


Fig. 1

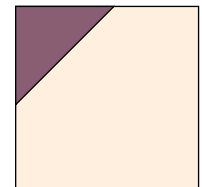


Fig. 2

2. Follow Figure 3 for the seam direction to add a (1) 2 ½" Fabric M square to the upper right corner, (1) 2 ½" Fabric N square to the lower left corner and (1) 2 ½" Fabric O square to the lower right corner of the 4 ½" Fabric G square to make (1) Block One square (Fig. 4).

3. Repeat Steps 1-2 to make (7) Block One squares total.

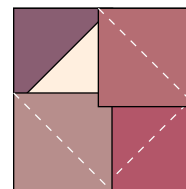


Fig. 3

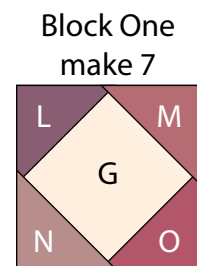


Fig. 4

WINTER WONDERLAND

Runner

4. Repeat Steps 1-2 and refer to Figures 5-8 for fabric identification, location and seam direction to make (7) Block Two squares, (9) Block Three squares, (5) Block Four squares and (5) Block Five squares.

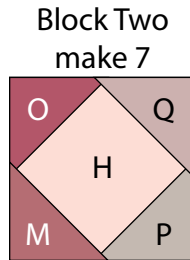


Fig. 5

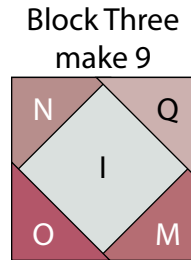


Fig. 6

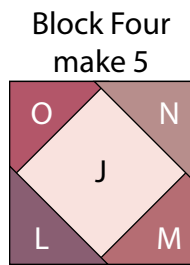


Fig. 7

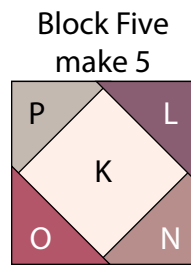
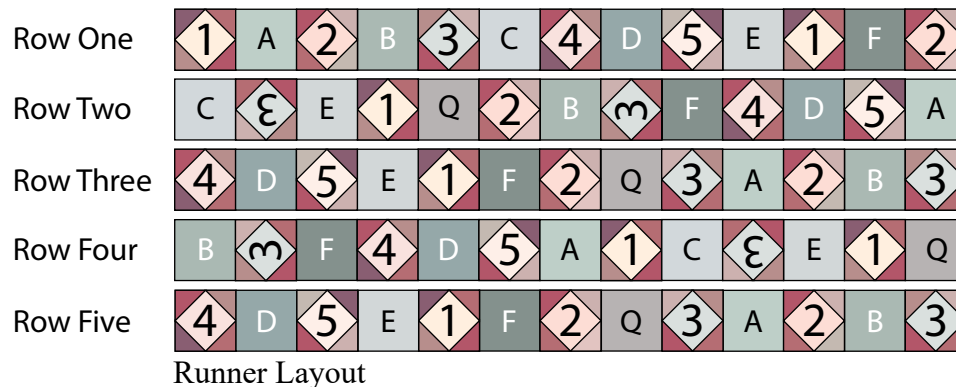


Fig. 8

Runner Top Assembly

(Follow the Runner Layout and pay attention to the orientation of the blocks while assembling the runner top.)

- Sew (7) assorted Blocks and (6) assorted 4 1/2" squares together, alternating them, to make Row One. Repeat to make Row Three and Row Five.
- Sew (7) assorted 4 1/2" squares and (6) assorted Blocks together, alternating them, to make Row Two. Repeat to make Row Four.
- Sew the (5) rows together in numerical order to make the runner top.
- Layer and quilt as desired.
- Sew the (4) 2 1/2" x WOF Fabric E strips together, end to end with 45-degree seams, to make the binding. Fold this long strip in half lengthwise with wrong sides together and press.
- Bind as desired.



Every effort has been made to ensure that all projects are error free. All the information is presented in good faith, however no warranty can be given nor results guaranteed as we have no control over the execution of instructions. Therefore, we assume no responsibility for the use of this information or damages that may occur as a result. When errors are brought to our attention, we make every effort to correct and post a revision as soon as possible. Please make sure to check www.henryglassfabrics.net for pattern updates prior to starting the project. We also recommend that you test the project prior to cutting for kits. Finally, all free projects are intended to remain free to you and are not for resale.