

Winter Wonderland

• A Free Project Sheet •
• NOT FOR RESALE •


By Anni Downs



Quilt Design by Anni Downs

Quilt 1

Skill Level: Advanced Beginner

 Henry Glass & Co., Inc.



facebook

Finished Quilt Size: 60" x 60"
49 West 37th Street, New York, NY 10018
tel: 212-686-5194 fax: 212-532-3525
Toll Free: 800-294-9495
www.henryglassfabrics.net

Please check our website for pattern updates before starting this project.

WINTER WONDERLAND

Finished Quilt Size: 60" x 60"

Quilt 1

Fabrics in the Collection



Winter Wonderland Scene
Cream – 2303-33



Winter Wonderland Scene
Light Taupe – 2303-34



Winter Wonderland Scene
Dusty Green – 2303-66



Snow Dot - Light Blue
2304-11



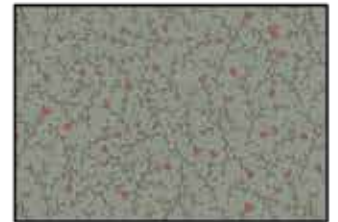
Snow Dot - Cream
2304-33



Snow Dot - Brown
2304-38



Winter Flowers
Dark Mushroom – 2305-31



Winter Flowers
Medium Blue – 2305-77



Winter Flowers - Red
2305-88



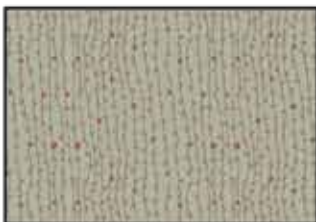
Snowflakes - Blue
2306-11



Snowflakes - Cream
2306-33



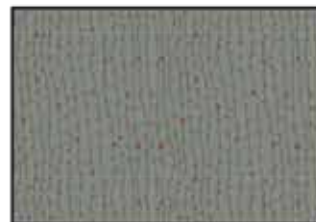
Snowflakes - Stone
2306-34



Dot Vine - Light Blue
2307-11



Dot Vine - Dusty Pink
2307-22



Dot Vine - Medium Blue
2307-77



Trees - Dark Mushroom
2308-31



Trees - Stone
2308-34



Trees - Dark Blue
2308-78



Penguins - Taupe
2309-31



Penguins - Cream
2309-33



Penguins - Dusty Green
2309-66

Materials

1/3 yard	Winter Wonderland Scene - Dusty Green (A)	2303-66
1/2 yard	Snow Dot - Light Blue (B)	2304-11
1/3 yard	Winter Flowers - Medium Blue (C)	2305-77
1/3 yard	Snowflakes - Blue (D)	2306-11
7/8 yard	Dot Vine - Medium Blue (E)	2307-77*
1/3 yard	Trees - Dark Blue (F)	2308-78
1/2 yard	Snow Dot - Cream (G)	2304-33
1/2 yard	Snowflakes - Cream (H)	2306-33
2/3 yard	Trees - Stone (I)	2308-34
1/2 yard	Snowflakes - Stone (J)	2306-34
1/3 yard	Penguins - Cream (K)	2309-33
3/8 yard	Snow Dot - Brown (L)	2304-38
2/3 yard	Dot Vine - Dusty Pink (M)	2307-22
5/8 yard	Winter Flowers - Dark Mushroom (N)	2305-31
2/3 yard	Winter Flowers - Red (O)	2305-88
1/3 yard	Trees - Dark Mushroom (P)	2308-31
2/3 yard	Penguins - Dusty Green (Q)	2309-66
4 yards	Winter Wonderland Scene - Light Taupe (Backing)	2303-34

*Includes binding

Cutting Instructions

Please note: all strips are cut across the width of fabric (WOF) from selvage to selvage edge unless otherwise noted.

From the Winter Wonderland Scene - Dusty Green (A), cut:

- (2) 4 1/2" x WOF strips. Sub-cut (16) 4 1/2" squares.

From the Snow Dot - Light Blue (B), cut:

- (3) 4 1/2" x WOF strips. Sub-cut (19) 4 1/2" squares.

From the Winter Flowers - Medium Blue (C), cut:

- (2) 4 1/2" x WOF strips. Sub-cut (17) 4 1/2" squares.

From the Snowflakes - Blue (D), cut:

- (2) 4 1/2" x WOF strips. Sub-cut (15) 4 1/2" squares.

From the Dot Vine - Medium Blue (E), cut:

- (2) 4 1/2" x WOF strips. Sub-cut (15) 4 1/2" squares.
- (6) 2 1/2" x WOF strips for the binding.

From the Trees - Dark Blue (F), cut:

- (2) 4 1/2" x WOF strips. Sub-cut (15) 4 1/2" squares.

From the Snow Dot - Cream (G), cut:

- (3) 4 1/2" x WOF strips. Sub-cut (24) 4 1/2" squares.

From the Snowflakes - Cream (H), cut:

- (3) 4 1/2" x WOF strips. Sub-cut (25) 4 1/2" squares.

From the Trees - Stone (I), cut:

- (4) 4 1/2" x WOF strips. Sub-cut (30) 4 1/2" squares.

From the Snowflakes - Stone (J), cut:

- (3) 4 1/2" x WOF strips. Sub-cut (19) 4 1/2" squares.

From the Penguins - Cream (K), cut:

- (2) 4 1/2" x WOF strips. Sub-cut (15) 4 1/2" squares.

From the Snow Dot - Brown (L), cut:

- (4) 2 1/2" x WOF strips. Sub-cut (58) 2 1/2" squares.

From the Dot Vine - Dusty Pink (M), cut:

- (7) 2 1/2" x WOF strips. Sub-cut (98) 2 1/2" squares.

From the Winter Flowers - Dark Mushroom (N), cut:

- (6) 2 1/2" x WOF strips. Sub-cut (88) 2 1/2" squares.

From the Winter Flowers - Red (O), cut:

- (8) 2 1/2" x WOF strips. Sub-cut (113) 2 1/2" squares.

From the Trees - Dark Mushroom (P), cut:

- (3) 2 1/2" x WOF strips. Sub-cut (40) 2 1/2" squares.

From the Penguins - Dusty Green (Q), cut:

- (2) 4 1/2" x WOF strips. Sub-cut (15) 4 1/2" squares.
- (4) 2 1/2" x WOF strips. Sub-cut (55) 2 1/2" squares.

From the Winter Wonderland Scene - Light Taupe (Backing), cut:

- (2) 68" x WOF strips for the backing. Sew the strips together and trim to make the 68" x 68" back.

Block Assembly

1. Place (1) 2 1/2" Fabric L square on the top left corner of (1) 4 1/2" Fabric G square, right sides together (Fig. 1). Sew across the diagonal of the smaller square from the upper right corner to the lower left corner (Fig. 1). Flip open the triangle formed and press (Fig. 2). Trim away the excess fabric from behind the triangle 1/4" away from the sewn seam.

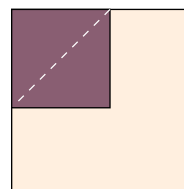


Fig. 1

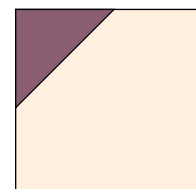


Fig. 2

2. Follow Figure 3 for the seam direction to add a (1) 2 ½" Fabric M square to the upper right corner, (1) 2 ½" Fabric N square to the lower left corner and (1) 2 ½" Fabric O square to the lower right corner of the 4 ½" Fabric G square to make (1) Block One square (Fig. 4).

3. Repeat Steps 1-2 to make (24) Block One squares total.

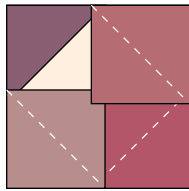


Fig. 3

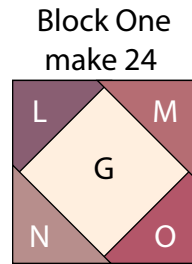


Fig. 4

4. Repeat Steps 1-2 and refer to Figures 5-8 for fabric identification, placement and seam direction to make (25) Block Two squares, (30) Block Three squares, (19) Block Four squares and (15) Block Five squares.

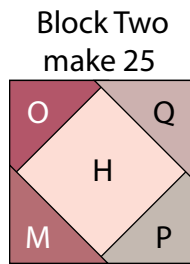


Fig. 5

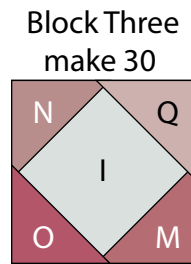


Fig. 6

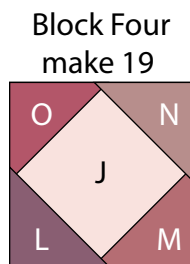


Fig. 7

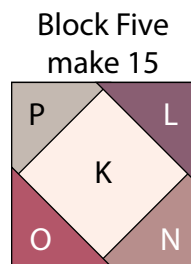


Fig. 8

Quilt Top Assembly

(Follow the Quilt Layout and pay attention to the orientation of the blocks while assembling the quilt top.)

5. Sew (8) assorted blocks and (7) assorted 4 ½" squares together, alternating them, to make Row One. Repeat to make Row Three, Row Five, Row Seven, Row Nine, Row Eleven, Row Thirteen and Row Fifteen.

6. Sew (8) assorted 4 ½" squares and (7) assorted blocks together, alternating them, to make Row Two. Repeat to make Row Four, Row Six, Row Eight, Row Ten, Row Twelve and Row Fourteen.

7. Sew the (15) Rows together, in numerical order, to make the quilt top.

8. Layer and quilt as desired.

9. Sew the (6) 2 ½" x WOF Fabric E strips together, end to end with 45-degree seams, to make the binding. Fold this long strip in half lengthwise with wrong sides together and press.

10. Bind as desired.

WINTER WONDERLAND

Quilt 1

Row One	1	A	2	B	3	C	4	D	5	E	1	F	2	Q	3
Row Two	C	ε	E	1	Q	2	B	3	F	4	D	5	A	1	C
Row Three	4	D	5	E	1	F	2	Q	3	A	2	B	3	C	4
Row Four	B	3	F	4	D	5	A	1	C	ε	E	1	Q	2	B
Row Five	4	D	5	E	1	F	2	Q	3	A	2	B	3	C	4
Row Six	B	3	F	4	D	5	A	1	C	ε	E	1	Q	2	B
Row Seven	2	Q	3	A	2	B	3	C	4	D	5	E	1	F	2
Row Eight	A	1	C	ε	E	1	Q	2	B	3	F	4	D	5	A
Row Nine	1	A	2	B	3	C	4	D	5	E	1	F	2	Q	3
Row Ten	C	ε	E	1	Q	2	B	3	F	4	D	5	A	1	C
Row Eleven	4	D	5	E	1	F	2	Q	3	A	2	B	3	C	4
Row Twelve	B	3	F	4	D	5	A	1	C	ε	E	1	Q	2	B
Row Thirteen	4	D	5	E	1	F	2	Q	3	A	2	B	3	C	4
Row Fourteen	B	3	F	4	D	5	A	1	C	ε	E	1	Q	2	B
Row Fifteen	2	Q	3	A	2	B	3	C	4	D	5	E	1	F	2

Quilt Layout

Every effort has been made to ensure that all projects are error free. All the information is presented in good faith, however no warranty can be given nor results guaranteed as we have no control over the execution of instructions. Therefore, we assume no responsibility for the use of this information or damages that may occur as a result. When errors are brought to our attention, we make every effort to correct and post a revision as soon as possible. Please make sure to check www.henryglassfabrics.net for pattern updates prior to starting the project. We also recommend that you test the project prior to cutting for kits. Finally, all free projects are intended to remain free to you and are not for resale.