

# Winter Joy

Free Project Sheet  
NOT FOR RESALE

by Hannah West from Lucky Day



Quilt designed by Denise Russell.

## Quilt 2

Quilt size: 59" x 81"

Skill Level: Advanced Beginner

 **Henry Glass & Co., Inc.**



facebook

49 West 37th Street  
New York, NY 10018

Tel: 212-686-5194 - Fax: 212-532-3525

Toll Free: 800-294-9495

[www.henryglassfabrics.com](http://www.henryglassfabrics.com)

Please check our website for pattern updates  
before starting this project.



# Winter Joy - Fabrics in the Collection



2864P-66 Winter Joy Panel - Green



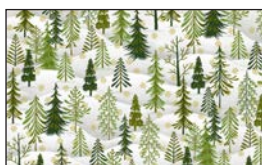
2863-33 Border Stripe - Cream



2854-33 Downhill Snowmen - Cream



2855-33 Allover Novelty - Cream



2856-33 Winter Trees Cream



2857-44 Poinsettia Yellow



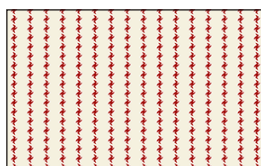
2857-88 Poinsettia Red



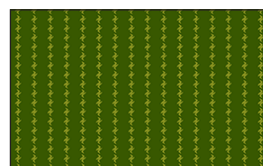
2858-33 Snowflake Confetti - Cream



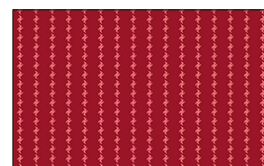
2858-88 Snowflake Confetti - Red



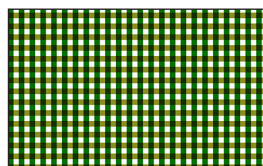
2859-33 Stripe Cream



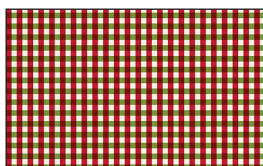
2859-66 Stripe Green



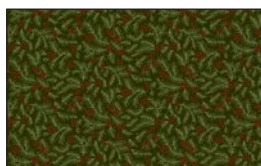
2859-88 Stripe Red



2860-66 Check Green



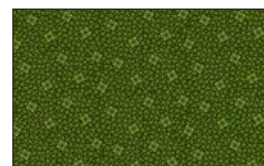
2860-88 Check Red



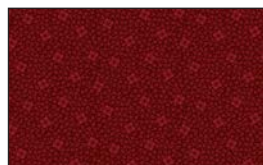
2861-66 Fir Sprigs Green



2861-88 Fir Sprigs Red



2862-66 Tossed Packages - Green



2862-88 Tossed Packages - Red

Selected fabric from the Folio Basics Collection



7755-04 Off White

# Winter Joy - Quilt 2

Page 1

## Materials

*Yardages and cutting instructions are based on 42" of usable fabric width*

2 panels 2864P-66 Winter Joy Panel - Green  
1/4 yard 2855-33 Allover Novelty - Cream  
1/4 yard 2856-33 Winter Trees - Cream  
3/8 yard 2859-88 Stripe - Red  
1/2 yard 2858-88 Snowflake Confetti - Red  
2/3 yard 7755-04 Folio Basic - Off White  
1 yard 2860-66 Check - Green  
1 yard 2862-88 Tossed Packages - Red  
1-3/8 yards 2854-33 Downhill Snowmen - Cream  
4 yards 2857-44 Poinsettia - Yellow for backing

## Cut Fabrics

*Note: All strips are cut across the width of the fabric (WOF) from selvage to selvage unless otherwise indicated.*

### From 2864P-66 Winter Joy Panel – Green:

\*Trim blocks to 11" x 13".

### From 2855-33 Allover Novelty – Cream:

\*Cut one 6" x WOF strip. Sub-cut four 6" x 8" rectangles.

### From 2856-33 Winter Trees – Cream:

\*Cut one 6" x WOF strip. Sub-cut three 6" x 8" rectangles.

### From 2859-88 Stripe – Red:

\*Cut three 1-3/4" x WOF strips. Sub-cut six 1-3/4" x 6" strips and six 1-3/4" x 8" strips.  
\*Cut one 3-3/8" x WOF strip. Sub-cut six 3-3/8" squares.

### From 2858-88 Snowflake Confetti – Red:

\*Cut three 1-3/4" x WOF strips. Sub-cut:  
- Eight 1-3/4" x 6" strips  
- Eight 1-3/4" x 8" strips  
\*Cut two 2" x WOF strips. Sub-cut thirty 2" squares.  
\*Cut one 3-3/8" x WOF strip. Sub-cut eight 3-3/8" squares.

### From 7755-04 Folio Basic - Off White:

\*Cut two 3-3/8" x WOF strips. Sub-cut twenty 3-3/8" squares.

\*Cut one 6" x WOF strip. Sub-cut twenty 1-3/4" x 6" strips.

\*Cut one 8" x WOF strip. Sub-cut twenty 1-3/4" x 8" strips.

### From 2860-66 Check – Green:

\*Cut three 2" x WOF strips. Sub-cut four 2" x 13" strips and three 2" x 11" strips.

\*Cut one 11" x WOF strip. Sub-cut twenty-one 2" x 11" strips (for a total of 24).

\*Cut one 13" x WOF strip. Sub-cut twenty-one 2" x 13" strips (for a total of 25).

### From 2862-88 Tossed Packages – Red:

\*Cut three 1-3/4" x WOF strips. Sub-cut six 1-3/4" x 6" strips and six 1-3/4" x 8" strips.

\*Cut one 3-3/8" x WOF strip. Sub-cut six 3-3/8" squares.

\*Cut eight 2-1/2" x WOF strips for binding.

### From 2854-33 Downhill Snowmen – Cream:

\*Cut one 6" x WOF strip. Sub-cut three 6" x 8" rectangles.

\*Cut eight 4-1/2" x WOF strips for the border.

## Assemble Blocks

*Note: Measurements include 1/4" seam allowances. Sew with right sides together unless otherwise stated. If no direction is specified, press the seam toward the darker fabric.*

1. Draw a diagonal line on the wrong side of the 3-3/8" 7755-04 Folio Basic - Off White squares. With right sides together, layer the marked Off White squares atop the 3-3/8" 2858-88 Snowflake Confetti - Red squares. Stitch 1/4" on each side of the marked line, cut on the drawn line, press each unit open with seams toward dark fabric, and trim dog ears (*figure 1*). Make a total of sixteen half-square triangles (HST).

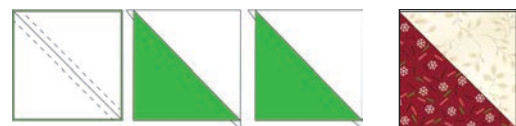


Figure 1 – Make 16.



# Winter Joy - Quilt 2

Page 2

|  |  |   |
|--|--|---|
|  <p><b>Block 1 – Make 4</b><br/> 2855-33 Allover Novelty – Cream<br/> 2858-88 Snowflake Confetti – Red<br/> 7755-04 Folio Basic - Off White</p> |  <p><b>Block 2 – Make 3</b><br/> 2854-33 Downhill Snowmen – Cream<br/> 2862-88 Tossed Packages – Red<br/> 7755-04 Folio Basic - Off White</p> |  <p><b>Block 3 – Make 3</b><br/> 2856-33 Winter Trees – Cream<br/> 2859-88 Stripe – Red<br/> 7755-04 Folio Basic - Off White</p> |
|--|--|---|

Table 1. Block colorway and quantity.

2. Sew the 1-3/4" x 6" 7755-04 Folio Basic - Off White and 2858-88 Snowflake Confetti – Red strips together and press the seams toward the dark fabric. Make eight units. Noting fabric orientation, sew one Step 1 HST to each end of these units (*figure 2*). Press the seams away from the center.



Figure 2 – Make 8.

3. Sew the 1-3/4" x 8" 7755-04 Folio Basic - Off White and 2858-88 Snowflake Confetti – Red strips together and press the seams toward the dark fabric. Make eight units. Noting fabric orientation, sew one unit to opposite sides of a 6" x 8" 2855-33 Allover Novelty – Cream rectangle (*figure 3*). Press the seams toward the center. Make four block centers.



Figure 3 – Make 4.

4. Sew one Step 2 unit to the top and one to the bottom of the Step 3 block centers to make four 11" x 13" blocks (*figure 4*). Press the seams in one direction.



Figure 4 – Make (4) 11" x 13" blocks.

5. Repeat Steps 1 – 4 to make six more 11" x 13" blocks, referring to Table 1 above for fabric combinations.

# Winter Joy - Quilt 2

Page 3

## Assemble Quilt Top

6. Referring to the quilt photo for block placement, lay out four blocks (two 11" x 13" 2864P-66 Winter Joy Panel – Green rectangles and two pieced blocks) and three 2" x 13" 2860-66 Check – Green sashing strips in five rows, and join the blocks and sashing strips together in each row. Press the seams toward the sashing.

7. To make the horizontal sashing rows, sew together four 2" x 11" 2860-66 Check – Green sashing strips and five 2" 2858-88 Snowflake Confetti – Red cornerstone squares. Repeat to make a total of six sashing strips. Press the seams toward the sashing.

8. Matching adjacent seams, sew block rows and horizontal sashing strips together. Press the seams in one direction.

9. For the border, join the eight 4-1/2" 2854-33 Downhill Snowmen – Cream strips together end to end using straight seams. Measure the vertical length of the quilt top through the center and cut two border strips that length. Sew one strip to each side of the

quilt top and press the seams toward the border strips. Measure the width of the quilt top through the center. Cut two border strips that length and sew one to the top and one to the bottom. Press the seams toward the borders.

## Finishing

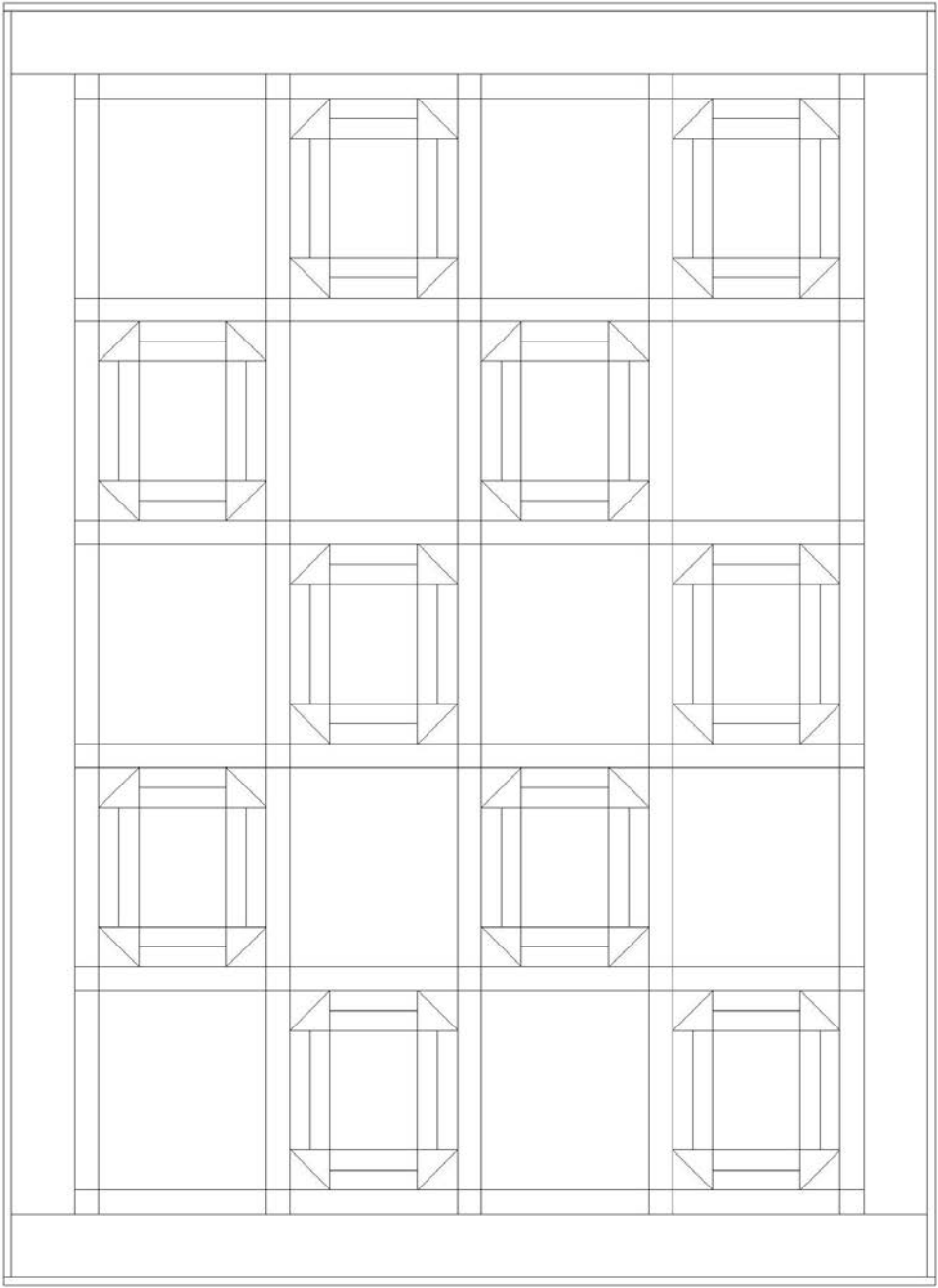
10. Create a quilt sandwich with the batting between the quilt top and the backing. Pin or baste layers together, mark quilting design, and quilt by hand or machine. When quilting is complete, remove pins or basting, and trim batting and backing even with raw edges of the quilt top.

11. Join the eight 2-1/2" 2862-88 Tossed Packages – Red binding strips together end to end using a diagonal seam to make one long strip. Fold in half lengthwise and press. Sew binding to the edges of the quilt, mitering corners, and overlapping ends. Fold binding to the back of the quilt and stitch it in place by hand to finish.

©2021 Henry Glass & Co. Inc.

*Every effort has been made to ensure that all projects are error free. All the information is presented in good faith; however, no warranty can be given nor results guaranteed as we have no control over the execution of instructions. Therefore, we assume no responsibility for the use of this information or damages that may occur as a result. When errors are brought to our attention, we make every effort to correct and post a revision as soon as possible. Please make sure to check [www.henryglassfabrics.com](http://www.henryglassfabrics.com) for pattern updates prior to starting the project. We also recommend that you test the project prior to cutting for kits. Finally, all free projects are intended to remain free to you and are not for resale.*

# Winter Joy - Quilt 2



Quilt Diagram