

# WILLOW HOLLOW

PATCHWORK AND APPLIQUÉ LAP QUILT

BY KIM DIEHL



Finished Quilt Size: 60½" x 60½"  
A Free Project Sheet from



Henry Glass & Co., Inc.



49 West 37th Street, New York, NY 10018  
tel: 212-686-5194 • fax: 212-532-3525  
Toll-free: 800-294-9495  
[www.henryglassfabrics.net](http://www.henryglassfabrics.net)

facebook



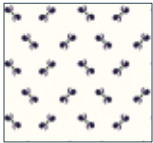
# WILLOW HOLLOW

## PATCHWORK AND APPLIQUÉ LAP QUILT

Finished Quilt Size: 64½" x 64½"

### MATERIALS

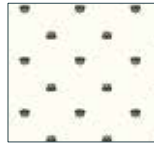
Yardages are based on a 42" width of useable fabric after prewashing and removing selvages. Fat eighths measure 9" x 21".



9972-40  
1⅞ yards



9973-40  
1⅞ yards



9974-40  
1⅞ yards



9975-77  
fat eighth



9976-11  
fat eighth



9976-77  
1½ yards



9977-11  
fat eighth



9978-17  
fat eighth



9979-77  
fat eighth



9980-17  
1⅓ yards



9981-77  
fat eighth



9982-77  
fat eighth



9983-11  
fat eighth



9984-77  
fat eighth



9985-11  
fat eighth



9986-77  
fat eighth



9987-77  
fat eighth



9988-17  
fat eighth



9989-11  
fat eighth



9989-77  
fat eighth

**In addition to the itemized fabrics, you'll need:**

- 1 square of batting, 67" x 67"
- 3¾ yards of backing fabric (Kim suggests the medium blue pear orchard print, 9989-11)
- Standard sewing and quilting supplies
- Supplies for your favorite appliqué method

### CUTTING

Cut all pieces across the width of the fabric in the order given unless otherwise noted. Width of fabric strips are referred to as WOF. The setting block appliqué pattern is provided on page 5.

**From each of the 3 cream prints, cut:**

1 strip, 4½" x WOF; crosscut into 8 squares, 4½" x 4½" (combined total of 24)

4 strips, 2½" x WOF; crosscut into 32 rectangles, 2½" x 4½" (combined total of 96)

2 strips, 2½" x WOF; crosscut into 32 squares, 2½" x 2½" (combined total of 96)

Reserve the remainder of the 3 cream prints.

**From the reserved remainder of the 3 cream prints, use your favorite method to cut and prepare a combined total of:**

100 Setting block appliqués

**From all blue prints, excluding 9976-77 and 9980-17, cut a combined total of:**

288 squares, 2½" x 2½" (For added choices as you stitch the patchwork for the Star blocks, you may wish to cut an extra square or two from each blue print.)

**From the dark blue foulard print, 9980-17, cut:**

5 strips, 8½" x WOF; crosscut into 20 squares, 8½" x 8½"

**From the dark blue cameos print, 9976-77, cut:**

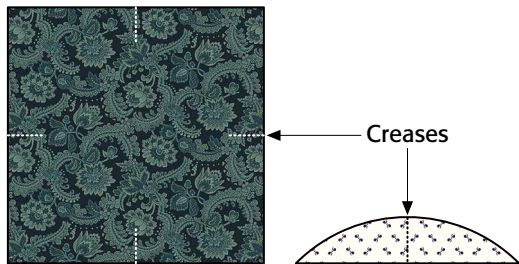
2 strips, 8½" x WOF; crosscut into 5 squares, 8½" x 8½"

8 strips, 2½" x WOF; trim to remove selvages

Enough 2½"-wide strips to make a 252" length of binding when joined end to end. (For best use of your fabric, incorporate the remainder of the 8½"-wide strip used to cut the 8½" squares.)

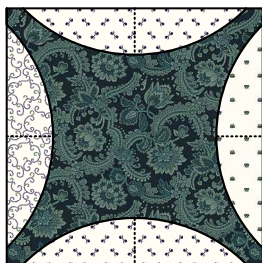
# APPLIQUÉING the SETTING BLOCKS

- 1 Select an 8½" dark blue foulard block square. Fold each side of the square in half, right sides together, and finger-press the center position. Choosing the prints randomly, select four Setting block appliqués. Fold each appliqué in half crosswise, and finger-press the center position.



Crease center-point of block.  
Crease center-point of 4 appliqués.

- 2 Position a prepared cream appliqué onto each side of the prepared block square with the straight raw edges flush, aligning the creases to perfectly center them; baste or pin in place. Use your favorite method to stitch the appliqués.



Make 25 Setting Blocks,  
8½" x 8½".

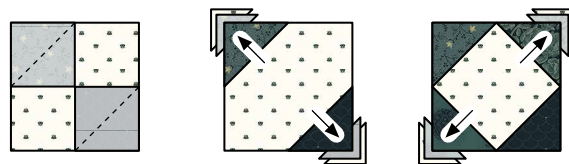
- 3 Repeat steps 1–2 using the remaining 8½" dark blue foulard squares, the 8½" dark blue cameos squares, and the prepared cream appliqués, to complete 25 Setting blocks measuring 8½" square, including the seam allowance.

# STITCHING the STAR BLOCKS

*Sew all pieces with right sides together using a ¼" seam allowance unless otherwise noted. Press the seam allowances as indicated by the arrows or otherwise directed.*

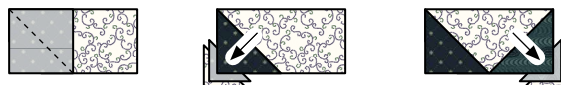
- 1 Use a pencil and an acrylic ruler to draw a diagonal sewing line from corner to corner on the wrong side of the 288 blue 2½" squares.

- 2 Choosing the prints randomly, select 12 prepared blue 2½" squares, one cream 4½" square, four cream 2½" x 4½" rectangles, and four cream 2½" squares.
- 3 Layer a prepared blue 2½" square onto two opposite corners of a cream 4½" square as shown. Stitch the blue squares on the drawn lines. Fold the resulting inner triangles open, aligning the corners with the corners of the cream square. Press. Trim away the layers beneath the top triangles, leaving ¼" seam allowances. In the same manner, add blue triangles to the remaining corners of the cream square. The pieced square-in-a-square unit should measure 4½" square, including the seam allowances.



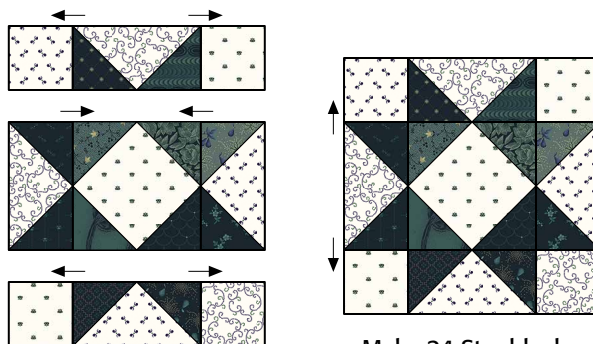
Make 1  
square-in-a-square unit,  
4½" x 4½".

- 4 Referring to step 3, use four cream 2½" x 4½" rectangles and eight prepared blue 2½" squares to piece four star-point units measuring 2½" x 4½", including the seam allowances.



Make 4 star-point units,  
2½" x 4½".

- 5 Lay out the square-in-a-square unit from step 3, the star-point units from step 4, and four cream 2½" squares in three horizontal rows as shown. Join the pieces in each row. Press. Join the rows. Press. The pieced Star block should measure 8½" square, including the seam allowances.

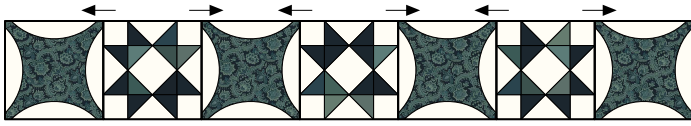


Make 24 Star blocks,  
8½" x 8½".

- 6 Repeat steps 2–5 to piece a total of 24 Star blocks.

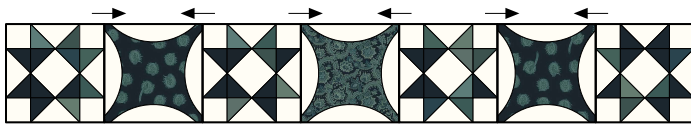
## PIECING the QUILT CENTER

- 1 Lay out four Setting blocks featuring the blue foulard print and three Star blocks in alternating positions. Join the blocks. Press the seam allowances toward the Setting blocks. Repeat to piece a total of four A rows measuring  $8\frac{1}{2}$ " x  $56\frac{1}{2}$ ", including the seam allowances.



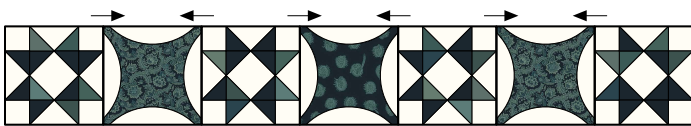
Make 4 A rows,  
 $8\frac{1}{2}$ " x  $56\frac{1}{2}$ ".

- 2 Taking note of the position of the blue prints in the Setting blocks, refer to the illustration to lay out four Star blocks and three Setting blocks in alternating positions. Join the blocks. Press. Repeat to piece a total of two B rows measuring  $8\frac{1}{2}$ " x  $56\frac{1}{2}$ ", including the seam allowances.



Make 2 B rows,  
 $8\frac{1}{2}$ " x  $56\frac{1}{2}$ ".

- 3 Again taking note of the position of the blue prints in the Setting blocks, refer to the illustration to lay out four Star blocks and three Setting blocks in alternating positions. Join the blocks. Press. The C row should measure  $8\frac{1}{2}$ " x  $56\frac{1}{2}$ ", including the seam allowances.



Make 1 C row,  
 $8\frac{1}{2}$ " x  $56\frac{1}{2}$ ".

- 4 Referring to the quilt image on page 1, lay out the A, B, and C rows to form the quilt center. Join the rows. Press the seam allowances toward the rows that begin and end with the Setting blocks. The pieced quilt center should now measure  $56\frac{1}{2}$ " square, including the seam allowances.

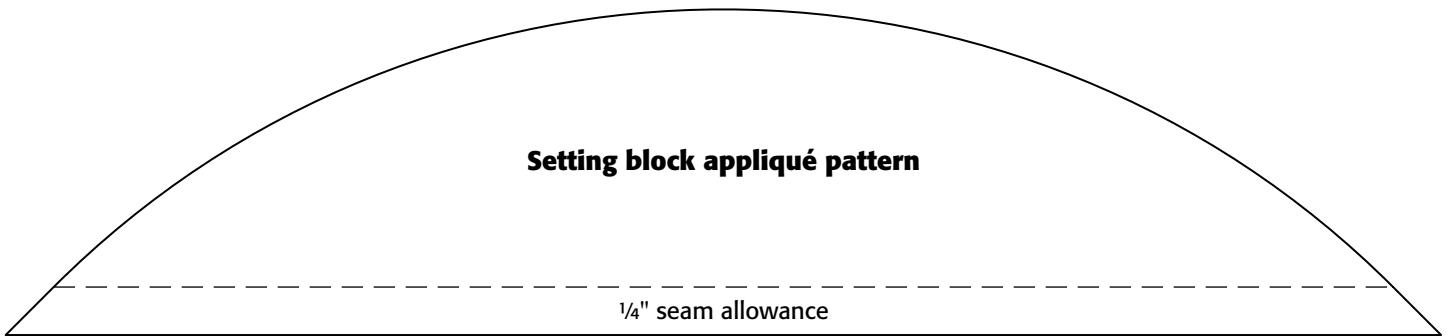
## ADDING the BORDER

- 1 Join the short ends of two  $2\frac{1}{2}$ "-wide WOF dark blue cameos strips. Press the seam allowances open. Repeat to make four pieced border strips.
- 2 Fold the right and left sides of the quilt center in half and finger-press the center positions. Align the seam of a pieced border strip with the center crease on the left side of the quilt top to perfectly position it from side to side; pin the strip in place. Repeat to position and pin a second border strip to the right side of the quilt center. Stitch the strips in place. Press the seam allowances toward the newly added strips. Trim away the excess strip length on each side of the quilt top.
- 3 Repeat step 2 to position, stitch, press, and trim the remaining pieced border strips to the top and bottom edges of the quilt top.

## COMPLETING the QUILT

Layer and baste the quilt top, batting, and backing. Quilt the layers. Join the dark blue cameos print binding strips to make one length and use it to bind the quilt.

### Setting block appliqué pattern



Turn off scaling when printing this page.  
The box at left should measure 1/2" x 1/2".

Pattern does not include seam allowance, except where indicated. Pattern piece can be placed on the straight grain of the fabric, or in any way you choose to make the best use of your print and the size of your available scraps.



©2023 Kim Diehl

Every effort has been made to ensure that all projects are error free. All the information is presented in good faith, however no warranty can be given nor results guaranteed as we have no control over the execution of instructions. Therefore, we assume no responsibility for the use of this information or damages that may occur as a result. When errors are brought to our attention, we make every effort to correct and post a revision as soon as possible. Please make sure to check [www.henryglassfabrics.com](http://www.henryglassfabrics.com) for pattern updates prior to starting the project. We also recommend that you test the project prior to cutting for kits. Finally, all free projects are intended to remain free to you and are not for resale or other forms of distribution.