

Valentine Wishes

• A Free Project Sheet •
• NOT FOR RESALE •

By Stacy West



Project Design by Heidi Pridemore



facebook

Table Set

Skill Level: Advanced Beginner



Henry Glass & Co., Inc.



Finished Runner Size: 52" x 20"
(132.08 cm x 50.80 cm)

Finished Place Mat Size: 14" x 12"
(35.56 cm x 30.48 cm)

49 West 37th Street, New York, NY 10018

tel: 212-686-5194 fax: 212-532-3525

Toll Free: 800-294-9495

www.henryglassfabrics.net

Please check our website for pattern updates before starting this project.

VALENTINE WISHES

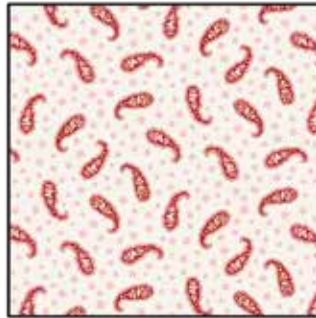
Table Set

Finished Runner Size: 52" x 20"
(132.08 cm x 50.80 cm)
Finished Place Mat Size: 14" x 12"
(35.56 cm x 30.48 cm)

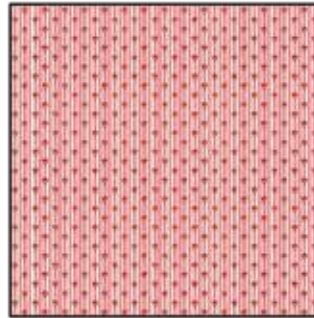
Fabrics in the Collection



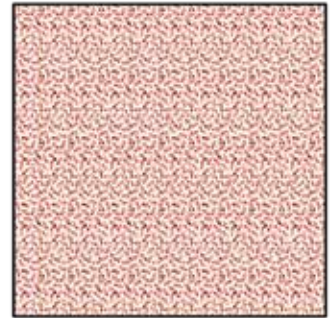
Cupids and Hearts
Cream/Pink – 1021-28



Paisley/Foulard
Cream/Red – 1022-08



Small Wallpaper Stripe
Pink – 1023-28



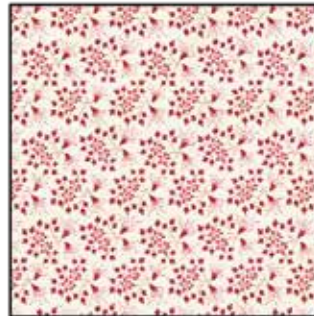
Tiny Vine and Hearts
Cream/Red – 1024-28



Tiny Vine and Hearts
Red – 1024-88



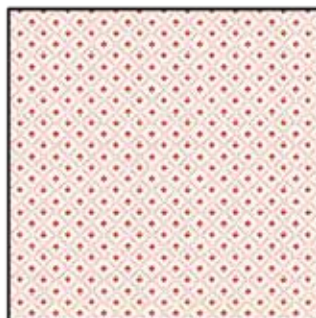
Medium Floral Sprays
Pink – 1025-22



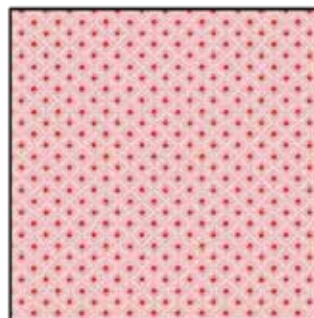
Medium Floral Sprays
Cream/Red – 1025-28



Medium Floral Sprays
Dark Pink – 1025-88



Hearts Inside Lattice
Cream/Red – 1026-08



Hearts Inside Lattice
Pink – 1026-22

Select Fabrics from Timeless Linen Basics & Buttermilk Blenders



Timeless Linen Basics
Light Pink – 1027-22



Timeless Linen Basics
Cream – 1027-44



Timeless Linen Basics
Dark Pink – 1027-202



Buttermilk Blenders
Real Red – 2944-87

VALENTINE WISHES

Table Set

Page 3

Runner Materials

¼ yard (0.23m)	Cupids and Hearts - Cream/Pink (A)	1021-28
½ yard (0.46m)	Medium Floral Sprays - Dark Pink (B)	1025-88
¾ yard (0.35m)	Paisley/Foulard - Cream/Red (C)	1022-08
⅛ yard (0.12m)	Hearts Inside Lattice - Pink (D)	1026-22
¼ yard (0.23m)	Tiny Vine and Hearts - Cream/Red (E)	1024-28
⅛ yard (0.12m)	Tiny Vine and Hearts - Red (F)	1024-88
¼ yard (0.23m)	Medium Floral Sprays - Pink (G)	1025-22
⅝ yard (0.57m)	Timeless Linen Basics - Cream (H)	1027-44
¾ yard (0.35m)	Buttermilk Blenders - Real Red (I)	2944-87*
1 ¾ yards (1.61m)	Medium Floral Sprays - Cream/Red (Backing)	1025-28

*Includes binding

Runner Cutting Instructions

Please note: All strips are cut across the width of fabric (WOF) from selvage to selvage unless otherwise noted.

From the Cupids and Hearts - Cream/Pink (A), cut:

- (1) 4 ½" x WOF strip. Sub-cut (3) 4 ½" squares.

From the Medium Floral Sprays - Dark Pink (B), cut:

- (2) 2 ½" x WOF strips. Sub-cut (24) 2 ½" squares.
- (1) 1 ½" x WOF strip. Sub-cut (2) 1 ½" x 18 ½" strips.
- (3) 1 ½" x WOF strips. Sew the strips together end to end with diagonal seams and cut (2) 1 ½" x 52 ½" strips.

From the Paisley/Foulard - Cream/Red (C), cut:

- (4) 2 ½" x WOF strips. Sub-cut (36) 2 ½" x 4 ½" strips.

From the Hearts Inside Lattice - Pink (D), cut:

- (1) 2 ½" x WOF strip. Sub-cut (12) 2 ½" squares.

From the Tiny Vine and Hearts - Cream/Red (E), cut:

- (2) 2 ½" x WOF strips. Sub-cut (24) 2 ½" squares.

From the Tiny Vine and Hearts - Red (F), cut:

- (1) 2 ½" x WOF strip. Sub-cut (12) 2 ½" squares.

From the Medium Floral Sprays - Pink (G), cut:

- (1) 2 ⅞" x WOF strip. Sub-cut (12) 2 ⅞" squares.
- (1) 2 ½" x WOF strip. Sub-cut (12) 2 ½" squares.

From the Timeless Linen Basics - Cream (H), cut:

- (1) 2 ⅞" x WOF strip. Sub-cut (12) 2 ⅞" squares.
- (3) 2 ½" x WOF strips. Sub-cut (48) 2 ½" squares.
- (1) 1 ½" x WOF strip. Sub-cut (2) 1 ½" x 16 ½" strips.
- (3) 1 ½" x WOF strips. Sew the strips together end to end with diagonal seams and cut (2) 1 ½" x 50 ½" strips.

From the Buttermilk Blenders - Real Red (I), cut:

- (4) 2 ½" x WOF strips for the binding.

From the Medium Floral Sprays - Cream/Red (Backing), cut:

- (1) 60" x 28" WOF strip for the backing.

Runner Block Assembly

Note: Pay attention to the unit orientations when assembling the various components. Use a ¼" seam allowance with right sides together (RST) unless otherwise noted.

1. Place (1) 2 ½" Fabric B square on the left side of (1) 2 ½" x 4 ½" Fabric C strip, right sides together (Fig. 1). Sew across the diagonal of the square from the upper right corner to the lower left corner (Fig. 1). Flip open the triangle formed and press. Trim away the excess fabric from behind the triangle, leaving a ¼" seam allowance (Fig. 2).

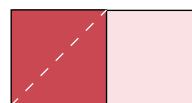


Fig. 1

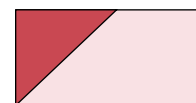


Fig. 2

2. Place another 2 ½" Fabric B square on the right side of the 2 ½" x 4 ½" Fabric C strip, right sides together (Fig. 3). Sew across the diagonal of the square from the upper left corner to the lower right corner (Fig. 3). Flip open the triangle formed and press. Trim away the excess fabric from behind the triangle, leaving a ¼" seam allowance to make (1) Unit 1 strip (Fig. 4).

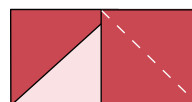


Fig. 3

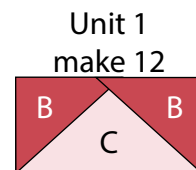


Fig. 4

3. Repeat Steps 1-2 to make (12) Unit 1 strips total.

4. Repeat Steps 1-2 and refer to Figure 5 for fabric identification, placement and seam direction to make (12) Unit 2 strips.

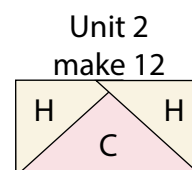


Fig. 5

5. Sew (1) 2 1/2" Fabric D square to each end of (1) Unit 1 strip to make the top row. Repeat to make the bottom row. Sew (1) Unit 1 strip to each side of (1) 4 1/2" Fabric A square to make the middle row. Sew together the (3) rows lengthwise to make (1) Unit 3 square (Fig. 6). Repeat to make (3) Unit 3 squares total.

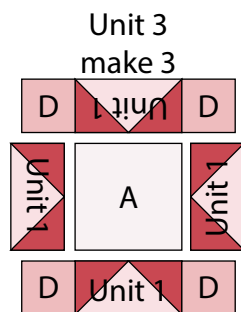


Fig. 6

6. Sew (1) 2 1/2" Fabric H square to each end of (1) Unit 2 strip to make the top row. Sew (1) 2 1/2" Fabric E square to each end of (1) 2 1/2" x 4 1/2" Fabric C strip to make the bottom row. Sew together the (2) rows lengthwise to make (1) 4 1/2" x 8 1/2" Unit 4 rectangle (Fig. 7). Repeat to make (12) Unit 4 rectangles total.

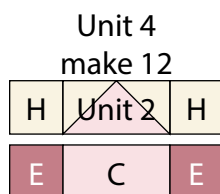


Fig. 7

7. Place (1) 2 7/8" Fabric G square on top of (1) 2 7/8" Fabric H square, right sides together. Draw a line across the diagonal of the top square (Fig. 8). Sew 1/4" away from each side of the drawn diagonal line (Fig. 8). Cut the (2) squares apart on the drawn diagonal line (Fig. 9) to make (2) half-square triangles. Trim the half-square triangles to measure 2 1/2" square to make (2) Unit 5 squares (Fig. 10). Repeat to make (24) Unit 5 squares total.

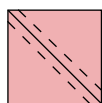


Fig. 8

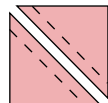


Fig. 9

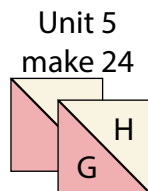


Fig. 10

8. Sew (1) 2 1/2" Fabric G square to the left side of (1) Unit 5 square to make the top row. Sew (1) Unit 5 square to the left side of (1) 2 1/2" Fabric F square to make the bottom row. Sew together the (2) rows lengthwise to make (1) 4 1/2" Unit 6 square (Fig. 11). Repeat to make (12) Unit 6 squares total.

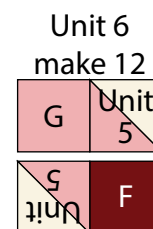


Fig. 11

9. Sew (1) Unit 6 square to each end of (1) Unit 4 rectangle to make the top row. Repeat to make the bottom row. Sew (1) Unit 4 rectangle to each side of (1) Unit 3 square to make the middle row. Sew together the (3) rows lengthwise to make the 16 1/2" Block One square (Fig. 12). Repeat to make (3) Block One squares total.

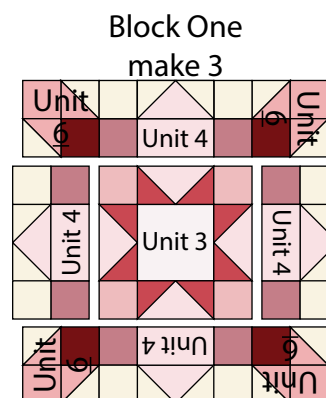


Fig. 12

10. Sew together the (3) Block One squares to make the 48 1/2" x 16 1/2" Runner Center Block (Fig. 13).

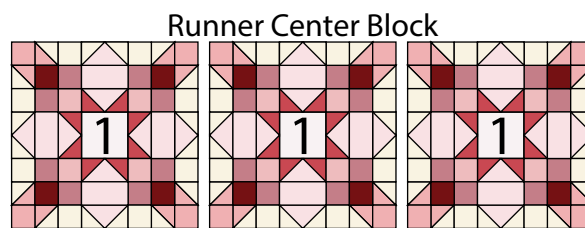


Fig. 13

Runner Assembly

(Follow the Runner Layout in Figure 14 while assembling.)

11. Sew (1) $1\frac{1}{2}$ " x $16\frac{1}{2}$ " Fabric H strip to each side of the Runner Center Block. Sew (1) $1\frac{1}{2}$ " x $50\frac{1}{2}$ " Fabric H strip to the top and to the bottom of the Runner Center Block.

12. Sew (1) $1\frac{1}{2}$ " x $18\frac{1}{2}$ " Fabric B strip to each side of the Runner Center Block. Sew (1) $1\frac{1}{2}$ " x $52\frac{1}{2}$ " Fabric B strip to the top and to the bottom of the Runner Center Block to make the Runner top.

13. Layer and quilt as desired.

14. Sew the (4) $2\frac{1}{2}$ " x WOF Fabric I strips together, end to end with 45-degree seams, to make the binding. Fold this long strip in half lengthwise with wrong sides together and press.

15. Bind as desired.

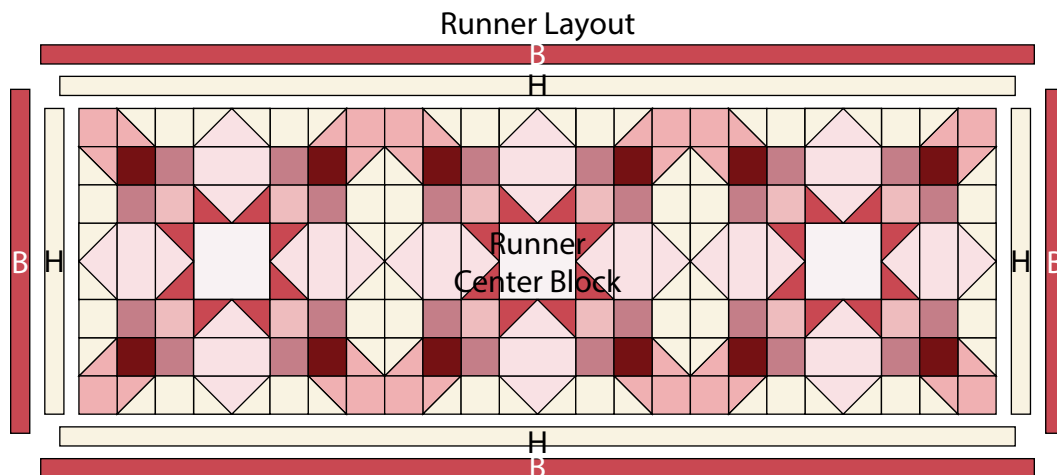


Fig. 14

VALENTINE WISHES

Page 6

Table Set

Place Mat Materials (makes 4)

1/3 yard (0.31m)	Cupids and Hearts - Cream/Pink (A)	1021-28
1/4 yard (0.23m)	Timeless Linen Basics - Dark Pink (B)	1027-202
1/8 yard (0.12m)	Tiny Vine and Hearts - Red (C)	1024-88
1/8 yard (0.12m)	Tiny Vine and Hearts - Cream/Red (D)	1024-28
1/8 yard (0.12m)	Hearts Inside Lattice - Pink (E)	1026-22
1/8 yard (0.12m)	Medium Floral Sprays - Dark Pink (F)	1025-88
1/8 yard (0.12m)	Paisley/Foulard - Cream/Red (G)	1022-08
1/8 yard (0.12m)	Medium Floral Sprays - Pink (H)	1025-22
5/8 yard (0.58m)	Buttermilk Blenders - Real Red (I)	2944-87*
1 yard (0.92m)	Hearts Inside Lattice - Cream/Red (Backs)	1026-08

*Includes binding

Place Mat Cutting Instructions

Please note: All strips are cut across the width of fabric (WOF) from selvage to selvage edge unless otherwise noted.

From the Cupids and Hearts - Cream/Pink (A), cut:

- (1) 8 1/2" x WOF strip. Sub-cut (4) 8 1/2" x 6 1/2" strips.

From the Timeless Linen Basics - Dark Pink (B), cut:

- (2) 1 1/2" x WOF strips. Sub-cut (8) 1 1/2" x 6 1/2" strips.
- (2) 1 1/2" x WOF strips. Sub-cut (8) 1 1/2" x 10 1/2" strips.

From the Tiny Vine and Hearts - Red (C), cut:

- (1) 2 1/2" x WOF strip. Sub-cut (16) 2 1/2" squares.

From the Tiny Vine and Hearts - Cream/Red (D), cut:

- (1) 2 1/2" x WOF strip. Sub-cut (16) 2 1/2" squares.

From the Hearts Inside Lattice - Pink (E), cut:

- (1) 2 1/2" x WOF strip. Sub-cut (16) 2 1/2" squares.

From the Medium Floral Sprays - Dark Pink (F), cut:

- (1) 2 1/2" x WOF strip. Sub-cut (12) 2 1/2" squares.

From the Paisley/Foulard - Cream/Red (G), cut:

- (1) 2 1/2" x WOF strip. Sub-cut (16) 2 1/2" squares.

From the Medium Floral Sprays - Pink (H), cut:

- (1) 2 1/2" x WOF strip. Sub-cut (12) 2 1/2" squares.

From the Buttermilk Blenders - Real Red (I), cut:

- (7) 2 1/2" x WOF strips for the binding.

From the Hearts Inside Lattice - Cream/Red (Backs), cut:

- (2) 16" x WOF strips. Sub-cut (4) 16" x 18" rectangles for the backings.

Place Mat Block Assembly

Note: Pay attention to the unit orientations when assembling the various components. Use a 1/4" seam allowance with right sides together (RST) unless otherwise noted.

16. Sew (1) 1 1/2" x 6 1/2" Fabric B strip to each side of (1) 8 1/2" x 6 1/2" Fabric A rectangle. Sew (1) 1 1/2" x 10 1/2" Fabric B strip to the top and to the bottom of the Fabric A rectangle to make (1) 10 1/2" x 8 1/2" Block Two rectangle (Fig. 15). Repeat to make (4) Block Two rectangles total.

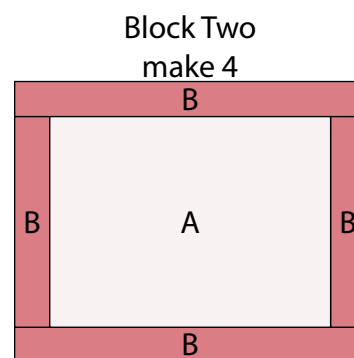


Fig. 15

17. Sew together (1) 2 1/2" Fabric G square, (1) 2 1/2" Fabric E square, (1) 2 1/2" Fabric D square and (1) 2 1/2" Fabric C square, in that order from top to bottom, to make (1) Block Three strip (Fig. 16). Repeat to make (4) Block Three strips total.

Block Three
make 4

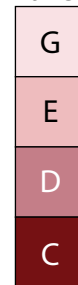


Fig. 16

Block Four
make 4

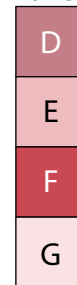


Fig. 17

18. Repeat Step 17 and refer to Figures 17-19 for fabric identification and placement to make (4) Block Four strips, (4) Block Five strips and (4) Block Six strips.

Block Five
make 4



Fig. 18

Block Six
make 4



Fig. 19

Place Mat Assembly

(Follow the Place Mat Layout in Figure 20 while assembling.)

19. Sew (1) Block Three strip to the left side of (1) Block Two rectangle. Sew (1) Block Four strip to the right side of the Block Two rectangle.

20. Sew (1) Block Five strip to the top of the Block Two rectangle. Sew (1) Block Six strip to the bottom of the Block Two rectangle to make (1) Place Mat top (Fig. 20).

21. Repeat Steps 19-20 to make (4) Place Mat tops total.

22. Layer and quilt as desired.

23. Sew the (7) 2 ½" x WOF Fabric I strips together, end to end with 45-degree seams, to make the binding. Fold this long strip in half lengthwise with wrong sides together and press. Cut the strips into (4) equal length pieces.

24. Bind as desired.

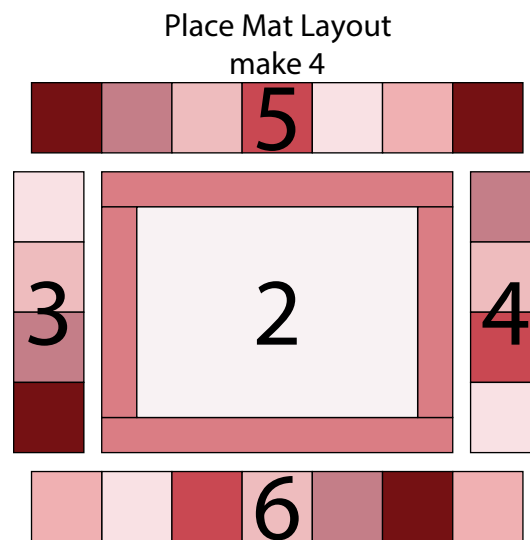


Fig. 20