

Twilight Garden Flannel



By Mary Jane Carey

••• A Free Project Sheet •••
••• NOT FOR RESALE •••

2 ply
flannel

Quilt Design by Mary Jane Carey



Quilt 2

Skill Level: Advanced Beginner



facebook

Finished Quilt Size: 71" x 86"
(180.34 cm x 218.44 cm)
49 West 37th Street, New York, NY 10018
tel: 212-686-5194 fax: 212-532-3525
Toll Free: 800-294-9495
www.henryglassfabrics.net
Please check our website for pattern updates before starting this project.

TWILIGHT GARDEN FLANNEL

Finished Quilt Size: 71" x 86"
(180.34 cm x 218.44 cm)

Quilt 2

Fabrics in the Collection



Main Floral
Light Blue – 3191F-17



Main Floral
Cream – 3191F-44



Main Floral
Purple – 3191F-55



Calico
Light Blue – 3192F-17



Calico
Cream – 3192F-44



Calico
Lilac – 3192F-55



Paisleys
Light Blue – 3193F-17



Paisleys
Cream – 3193F-44



Paisleys
Purple – 3193F-55



Crescent Flowers
Cream – 3194F-44



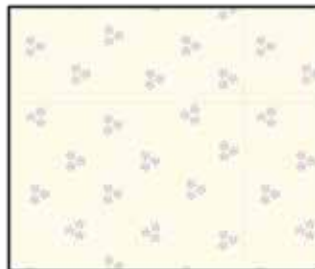
Crescent Flowers
Lilac – 3194F-55



Lacy Flowers
Cream – 3195F-44



Lacy Flowers
Lilac – 3195F-55



Daisy Dots
Cream – 3196F-45



Daisy Dots
Purple – 3196F-55



Border Stripe 24 inch by 44 inch
Cream – 3197F-44

Select Fabric from
Fluffy Solids



Off White

TWILIGHT GARDEN FLANNEL

Quilt 2

Materials

| | | |
|-------------------|---|-----------|
| ½ yard (0.46m) | Main Floral - Cream (A) | 3191F-44 |
| ⅔ yard (0.61m) | Fluffy Solids - Off White (B) Fluffy-Off White | |
| ¼ yard (0.23m) | Crescent Flowers - Cream (C) | 3194F-44 |
| ⅞ yard (0.81m) | Paisleys - Light Blue (D) | 3193F-17 |
| ⅞ yard (0.81m) | Calico - Lilac (E) | 3192F-55 |
| 2 ⅞ yards (1.94m) | Daisy Dots - Cream (F) | 3196F-45 |
| 2 yards (1.83m) | Border Stripe 24 inch by 44 inch - Cream (G) | 3197F-44 |
| 1 ⅞ yards (1.03m) | Main Floral - Purple (H) | 3191F-55 |
| 1 yard (0.92m) | Paisleys - Purple (I) | 3193F-55* |
| ⅜ yard (0.35m) | Daisy Dots - Purple (J) | 3196F-55 |
| 5 ⅓ yards (4.87m) | Lacy Flowers - Cream (Backing) | 3195F-44 |

*Includes binding

Cutting Instructions

Please note: All strips are cut across the width of fabric (WOF) from selvage to selvage unless otherwise noted.

From the Main Floral - Cream (A), cut:

- (3) 4 ½" x WOF strips. Sub-cut (20) 4 ½" squares.

From the Fluffy Solids - Off White (B), cut:

- (2) 4 ½" x WOF strips.
- (5) 1 ½" x WOF strips. Sub-cut (40) 1 ½" x 4 ½" strips.

From the Crescent Flowers - Cream (C), cut:

- (4) 1 ½" x WOF strips.

From the Paisleys - Light Blue (D), cut:

- (7) 3 ½" x WOF strips. Sub-cut (80) 3 ½" squares.

From the Calico - Lilac (E), cut:

- (7) 3 ½" x WOF strips. Sub-cut (80) 3 ½" squares.

From the Daisy Dots - Cream (F), cut:

- (7) 3 ½" x WOF strips. Sub-cut (80) 3 ½" squares.
- (7) 6 ½" x WOF strips. Sub-cut (80) 3 ½" x 6 ½" strips.

From the Border Stripe 24 inch by 44 inch - Cream (G), cut:

- (5) 12 ½" x WOF strips. Fussy cut (49) 3 ½" x 12 ½" strips, each centered on a strip of flowers.

From the Main Floral - Purple (H), cut:

- (4) 4 ½" x WOF strips. Sew the strips together end to end with diagonal seams and cut (2) 4 ½" x 78 ½" strips.
- (4) 4 ½" x WOF strips. Sew the strips together end to end with diagonal seams and cut (2) 4 ½" x 71 ½" strips.

From the Paisleys - Purple (I), cut:

- 326" of 2 ½" bias strips for the binding.

From the Daisy Dots - Purple (J), cut:

- (3) 3 ½" x WOF strips. Sub-cut (30) 3 ½" squares.

From the Lacy Flowers - Cream (Backing), cut:

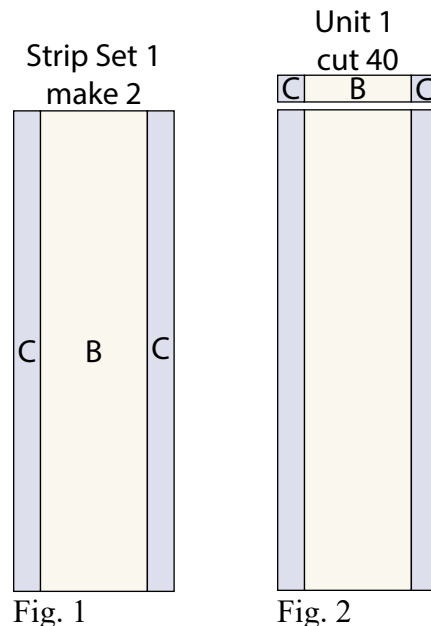
- (2) 94" x WOF strips for the backing. Sew the strips together and trim to make the 79" x 94" back.

Block Assembly

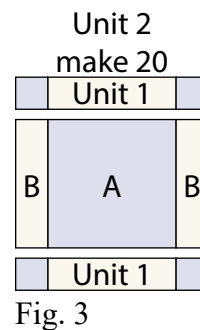
Note: Pay attention to the unit orientations when assembling the various components. Use a ¼" seam allowance with right sides together (RST) unless otherwise noted.

1. Sew (1) 1 ½" x WOF Fabric C strip to each side of (1) 4 ½" x WOF Fabric B strip lengthwise to make (1) Strip Set 1 (Fig. 1). Repeat to make a second Strip Set 1.

2. Cut (40) 1 ½" x 6 ½" Unit 1 strips from the (2) Strip Set 1's (Fig. 2).



3. Sew (1) 1 ½" x 4 ½" Fabric B strip to each side of (1) 4 ½" Fabric A square. Sew (1) Unit 1 strip to the top and to the bottom of the Fabric A square to make (1) 6 ½" Unit 2 square (Fig. 3). Repeat to make (20) Unit 2 squares total.



TWILIGHT GARDEN FLANNEL

Quilt 2

4. Place (1) 3 1/2" Fabric E square on the left side of (1) 3 1/2" x 6 1/2" Fabric F strip, right sides together (Fig. 4). Sew across the diagonal of the square from the upper right corner to the lower left corner (Fig. 4). Flip open the triangle formed and press. Trim away the excess fabric from behind the triangle, leaving a 1/4" seam allowance (Fig. 5).

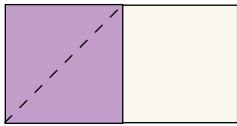


Fig. 4

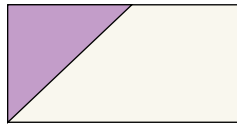


Fig. 5

5. Place (1) 3 1/2" Fabric D square on the right side of the 3 1/2" x 6 1/2" Fabric F strip, right sides together (Fig. 6). Sew across the diagonal of the square from the upper left corner to the lower right corner (Fig. 6). Flip open the triangle formed and press. Trim away the excess fabric from behind the triangle, leaving a 1/4" seam allowance to make (1) Unit 3 strip (Fig. 7).

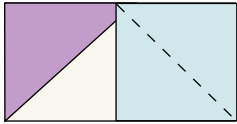


Fig. 6

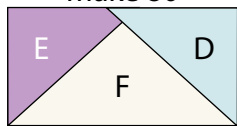


Fig. 7

6. Repeat Steps 4-5 to make (80) Unit 3 strips total.

Unit 3
make 80

7. Sew (1) 3 1/2" Fabric F square to each end of (1) Unit 3 strip to make the top row. Repeat to make the bottom row. Sew (1) Unit 3 strip to each side of (1) Unit 2 square to make the middle row. Sew together the row lengthwise to make (1) 12 1/2" Block One square (Fig. 8). Repeat to make (20) Block One squares total.

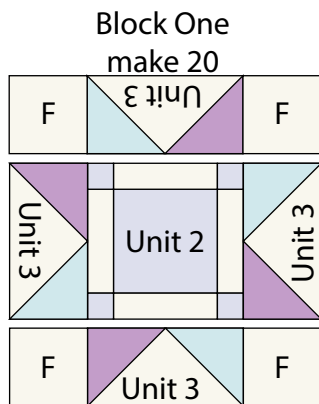


Fig. 8

Block Two
make 6



Fig. 9

8. Sew together (5) 3 1/2" Fabric J squares and (4) 3 1/2" x 12 1/2" Fabric G strips, end to end and alternating them from left to right, to make (1) Block Two strip (Fig. 9 below). Repeat to make (6) Block Two strips total.

9. Sew together (5) 3 1/2" x 12 1/2" Fabric G strips and (4) Block One squares, lengthwise and alternating them from left to right, to make (1) Row One. Repeat to make Row Two through Row Five (Fig. 10).

10. Sew together the (6) Block Two strips and (5) pieced Rows in numerical order, alternating them from top to bottom, to make the 63 1/2" x 78 1/2" Center Block (Fig. 10).

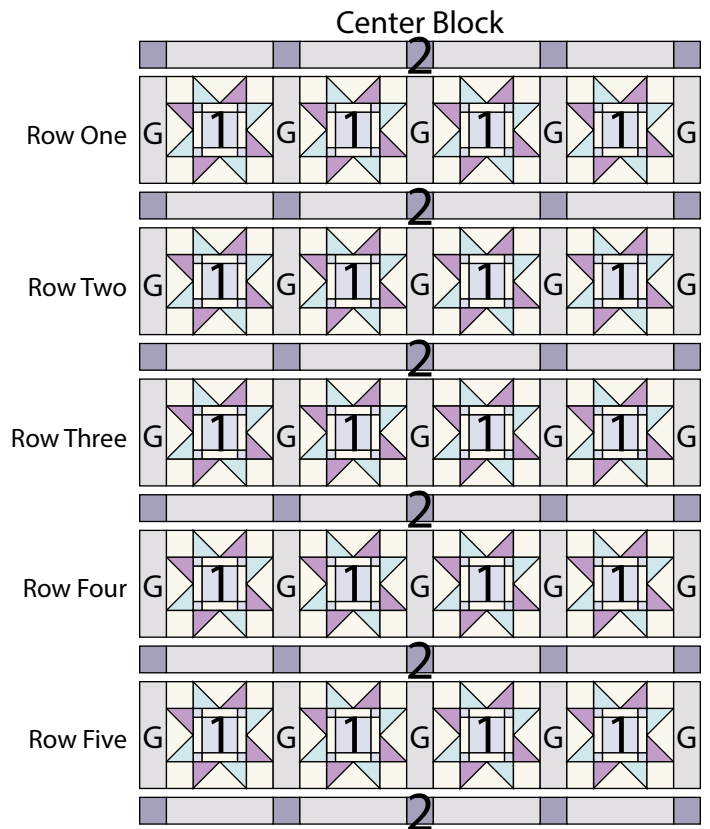


Fig. 10

TWILIGHT GARDEN FLANNEL

Quilt Top Assembly

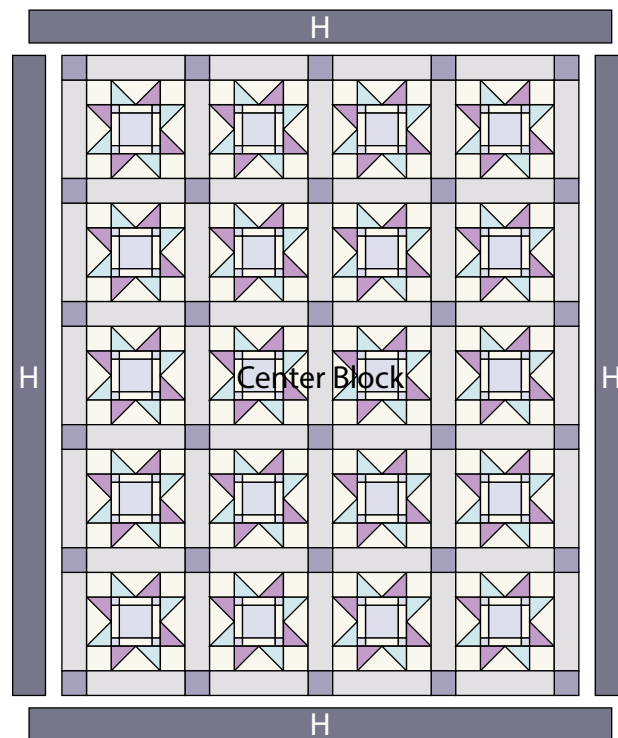
(Refer to the Quilt Layout while assembling.)

11. Sew (1) 4 ½" x 78 ½" Fabric H strip to each side of the Center Block. Sew (1) 4 ½" x 71 ½" Fabric H strip to the top and to the bottom of the Center Block to make the quilt top.

12. Layer and quilt as desired.

13. Sew the 326" of 2 ½" bias binding strips together, end to end with 45-degree seams, to make the binding. Fold this long strip in half lengthwise with wrong sides together and press.

14. Bind as desired.



Quilt Layout

Every effort has been made to ensure that all projects are error free. All the information is presented in good faith, however no warranty can be given nor results guaranteed as we have no control over the execution of instructions. Therefore, we assume no responsibility for the use of this information or damages that may occur as a result. When errors are brought to our attention, we make every effort to correct and post a revision as soon as possible. Please make sure to check www.henryglassfabrics.net for pattern updates prior to starting the project. We also recommend that you test the project prior to cutting for kits. Finally, all free projects are intended to remain free to you and are not for resale.