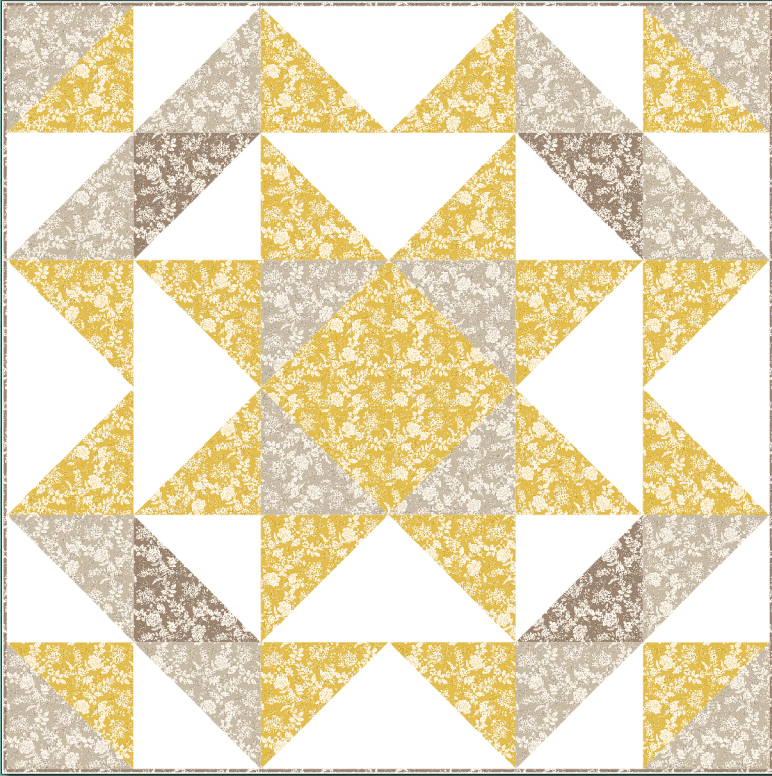


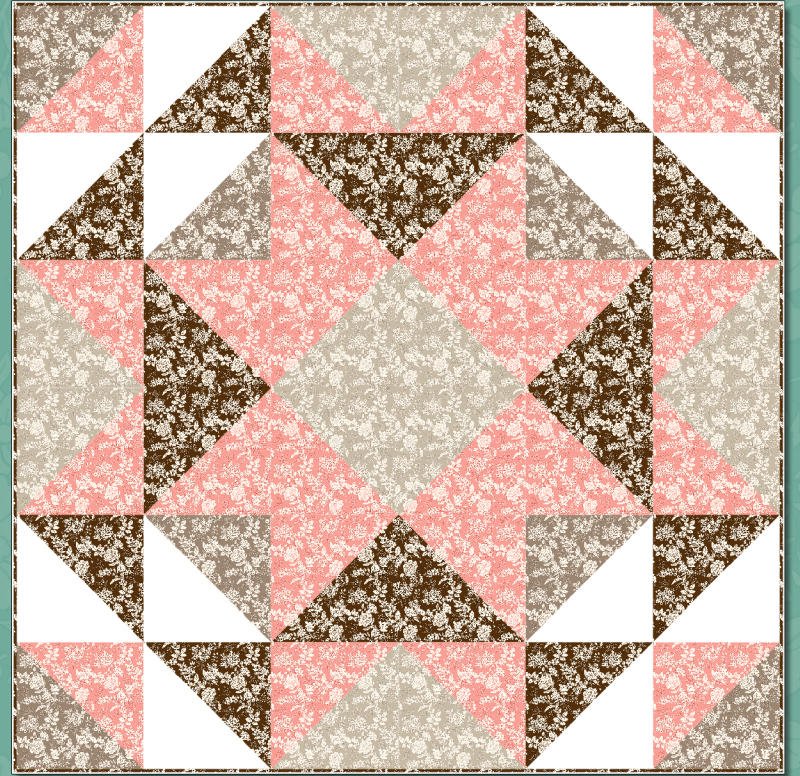
Yardage Requirements for Four Seasonal Star Quilts  
 Yardage amounts include binding; backing not included.  
 Finished size of each quilt: 60.5" x 60.5"

Autumn Star



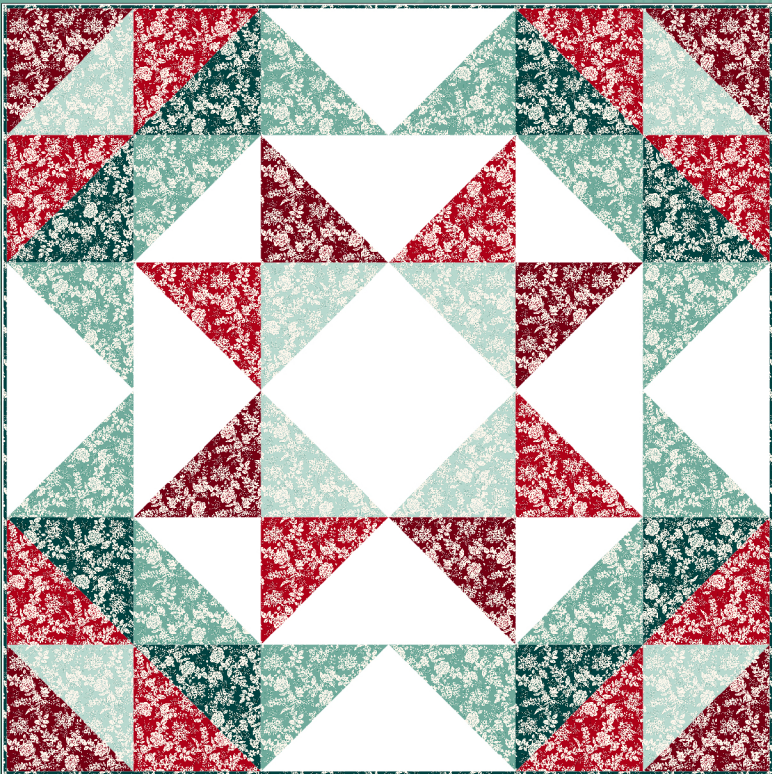
White (826-01W) – 2 yards  
 Yellow (826-44) – 2 yards  
 Taupey Gray (826-90) – 1 1/8 yards  
 Dk Taupe (826-909) – 7/8 yard

Spring Star



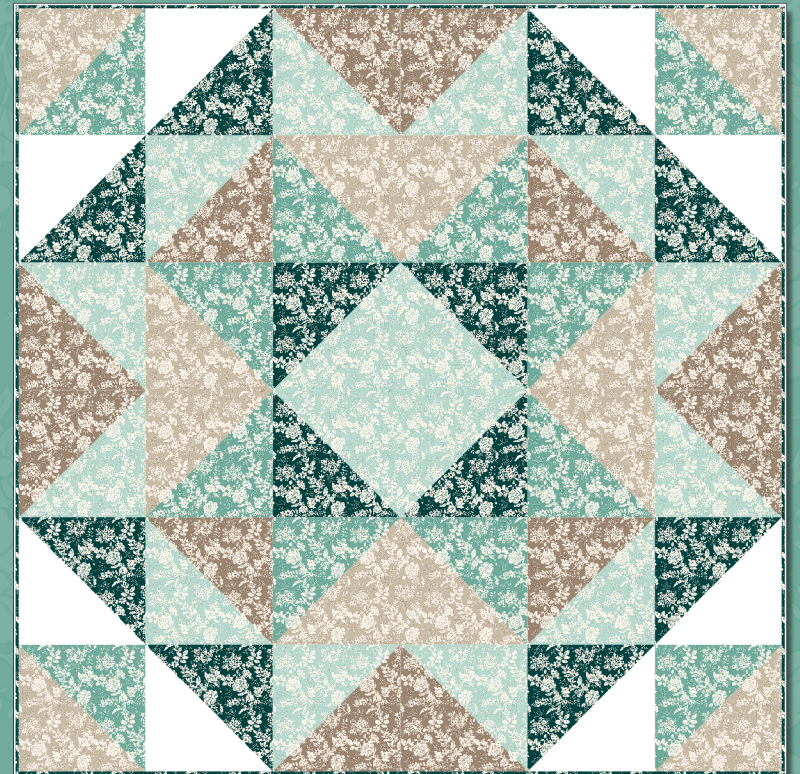
White (826-01W) – 3/4 yard  
 Pink (826-22) – 2 yards  
 Brown (826-33) – 1 2/3 yards  
 Taupey Gray (826-90) – 1 yard  
 Dk. Taupe (826-909) – 3/4 yard

Summer Star



White (826-01W) – 2 yards  
 Teal (826-77) – 1 yard  
 Brick Red (826-80) – 1 yard  
 Cranberry (826-88) – 3/4 yard  
 Dk. Aqua (826-111) – 1 1/8 yards  
 Lt. Aqua (826-1111) – 3/4 yard

Winter Star



White (826-01W) – 3/4 yard  
 Teal (826-77) – 1 1/3 yards  
 Taupey Gray (826-90) – 1 1/8 yards  
 Dk. Aqua (826-111) – 1 yard  
 Dk. Taupe (826-909) – 1 1/8 yards  
 Lt. Aqua (826-1111) – 1 1/3 yards