

Tranquility Soulmate

by Kim Diehl



Finished quilt size: 60½" x 60½"
A Free Project Sheet from



Henry Glass & Co., Inc.



49 West 37th Street, New York, NY 10018
tel: 212-686-5194 • fax: 212-532-3525
Toll-free: 800-294-9495
www.henryglassfabrics.net

facebook

Tranquility Soulmate

Finished quilt size: 60½" x 60½"

MATERIALS

This quilt features prints from Kim Diehl's Tranquility collection for Henry Glass Fabrics. Yardages are based on a 42" width of useable fabric after prewashing and removing selvages. Fat quarters measure 18" x 21".



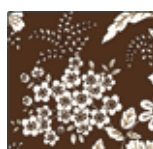
826-01W
White
2¼ yards



826-22
Pink
⅓ yard



826-30
Orange
⅓ yard



826-33
Brown
⅝ yard



826-44
Yellow
⅓ yard



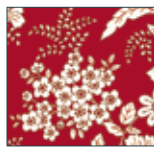
826-60
Celery
⅓ yard



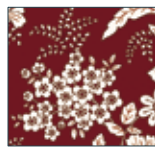
826-66
Pine
⅓ yard



826-77
Teal
⅓ yard



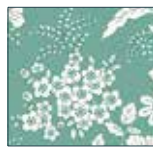
826-80
Red
⅓ yard



826-88
Wine
⅓ yard



826-90
Gray
¾ yard



826-111
Turquoise
⅓ yard



826-606
Avocado
⅓ yard



826-909
Taupey-Gray
fat quarter



826-1111
Aqua
⅓ yard

Additional materials:

- 3¾ yards of backing fabric (Kim suggests the yellow print, 826-44)
- 1 square of batting, 67" x 67"
- Standard sewing and quilting supplies

CUTTING

Cut all pieces across the width of the fabric in the order given unless directed differently. WOF is defined as width of fabric.

From the gray print, cut:

1 strip, 10½" x WOF; from this strip, cut 1 square, 10½" x 10½"

Enough 2½"-wide strips (using the remainder of the previously cut 10½"-wide strip) to make a 252" length of binding when joined together end to end. Reserve the remainder of gray print for use in the piano key border.

From the fat quarter of taupey-gray print, cut:

2 strips, 3" x 21"; crosscut into 8 squares, 3" x 3"
1 strip, 6" x 6"; crosscut into 2 squares, 6" x 6". Cut each square in half diagonally *once* to yield 2 triangles (total of 4)

Reserve the remainder of the taupey-gray print for use in the piano key border.

From the ⅓-yard cuts of assorted prints (11 prints total), use the color placement shown in the handout cover quilt, or create your own layout as your fabrics permit, to cut a *combined* total of:

4 squares, 5½" x 5½" (center star unit square-in-a-square triangle corners). Note: Kim chose to cut two squares from each of two prints for a planned look—this is entirely up to you!

8 additional squares, 5½" x 5½" (small star points for center star unit)

8 squares, 10½" x 10½" (large star points for outer star unit)

Reserve the remainder of the 11 assorted prints for use in the piano key border.

For the piano-key border, from the reserved remainder of the 11 assorted prints, the gray print, and the taupey-gray print, cut a *combined* total of:
64 rectangles, 3" x 7½" (You may wish to cut a handful of extra rectangles for added choices when stitching the border units, as your fabrics permit.)

From the brown print, cut:

1 strip, 11" x WOF; from this strip, cut:

- 2 squares, 11" x 11"; cut each square in half diagonally *once* to yield 2 triangles (total of 4)

Cut the remainder of the 11" x WOF strip in half lengthwise to make two 5½"-wide strips, and cut:

- 6 squares, 5½" x 5½"

1 strip, 5½" x WOF; from this strip, cut:

- 2 additional squares, 5½" x 5½" (combined total of 8 with previously cut 5½" squares)
- 2 squares, 3½" x 3½"; cut each square in half diagonally *once* to yield 2 triangles (total of 4)

From the white print, cut:

3 strips, 3" x WOF; crosscut into 4 rectangles, 3" x 10½", and 12 rectangles, 3" x 5½"

1 strip, 3½" x WOF; from this strip, cut:

- 2 squares, 3½" x 3½"; cut each square in half diagonally *once* to yield 2 triangles (total of 4)
- 4 squares, 3" x 3"

4 additional strips, 3½" x WOF; crosscut into 4 strips, 3½" x 40½"

2 strips, 5½" x WOF; crosscut into 4 rectangles, 5½" x 20½"

4 additional strips, 5½" x WOF; crosscut into 12 rectangles, 5½" x 10½", and 4 squares, 5½" x 5½"

1 strip, 11" x WOF; from this strip, cut:

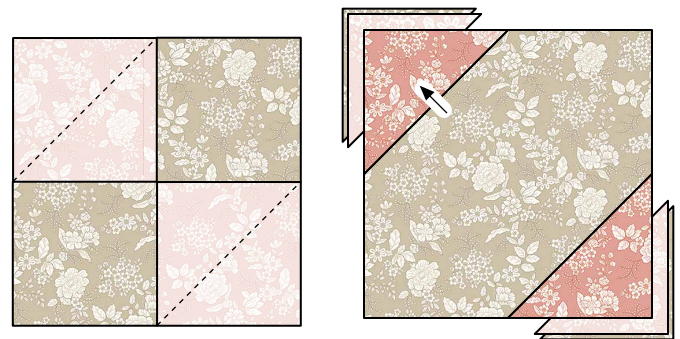
- 2 squares, 11" x 11"; cut each square in half diagonally *once* to yield 2 triangles (total of 4)
- 2 squares, 6" x 6"; cut each square in half diagonally *once* to yield 2 triangles (total of 4)

PIECING the CENTER STAR UNIT

Sew all pieces with right sides together using a ¼" seam allowance unless otherwise noted. Press the seam allowances as indicated by the arrows or otherwise specified.

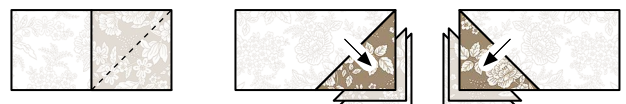
- 1 Choose the 10½" gray square and the four squares, 5½" x 5½", cut for the corners of the center square-in-a-square unit. Use a pencil and an acrylic ruler to draw a diagonal sewing line from corner to corner on the wrong side of each 5½" square.

- 2 Layer a prepared 5½" square onto each of two opposite corners of the gray square, choosing squares from a single matching print if you chose to duplicate the planned look of Kim's square-in-a-square unit. Sew the squares along the drawn diagonal lines. Fold the resulting inner triangles open, aligning the corners with the corners of the gray square. Press. Trim away the layers beneath the top triangles, leaving ¼" seam allowances. In the same manner, add stitched triangles to the remaining corners of the gray square. The pieced square-in-a-square unit should measure 10½" square, including the seam allowances.



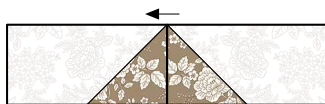
Square-in-a-square unit,
10½ x 10½"

- 3 Select the eight white 3" x 5½" rectangles and the eight taupey-gray 3" squares. Prepare the squares with a drawn diagonal sewing line as previously instructed. Layer a prepared taupey-gray square onto one end of a white rectangle as shown. Stitch, press, and trim as previously instructed. Repeat to piece a total of four pieced rectangles and four pieced mirror-image rectangles measuring 3" x 5½", including the seam allowances.



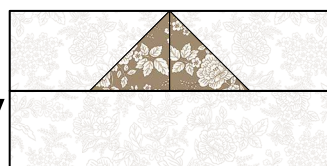
Make 4 units and 4 mirror-image units,
3" x 5½".

- 4 Join a pieced rectangle and a pieced mirror-image rectangle from the previous step along the gray edges. Press the seam allowances to one side, in the direction that produces the best triangle point. Repeat for a total of four pieced rectangle-triangle units measuring 3" x 10½", including the seam allowances.



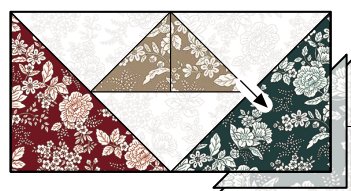
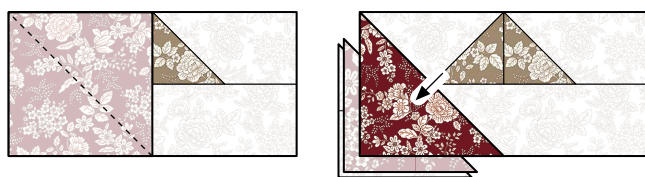
Make 4 rectangle-triangle units,
3" x 10½".

- 5 Join a pieced rectangle-triangle unit to a white 3" x 10½" rectangle as shown. Press. Repeat to piece a total of four star-point background units measuring 5½" x 10½", including the seam allowances.



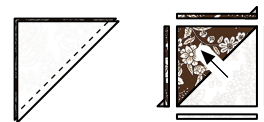
Make 4 star-point background units,
5½" x 10½".

- 6 Select the eight assorted-print 5½" squares cut for the small star points of the center star unit. Prepare the squares with drawn diagonal sewing lines as previously instructed. Layer a prepared 5½" square onto one end of a step 5 star-point background unit as shown. Stitch, press, and trim as previously instructed. In the same manner, add a mirror-image star point to the remaining end of the unit. Repeat to piece a total of four completed star-point rectangle units measuring 5½" x 10½", including the seam allowances.



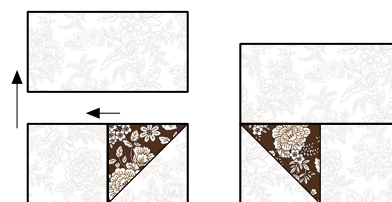
Make 4 completed
star-point rectangle units,
5½" x 10½".

- 7 Layer together a 3½" brown and white triangle. Stitch the pair together along the long diagonal edges. Press. Use a rotary cutter and an acrylic ruler to trim the unit on all sides to measure 3" square, removing the dog-ear points in the same step. Repeat for a total of four brown half-square-triangle units, 3" x 3".



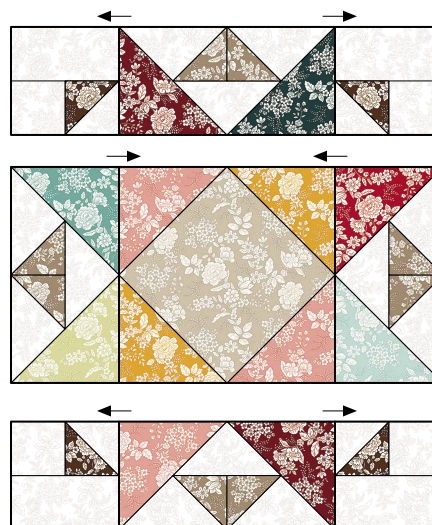
Make 4 brown
half-square-triangle units,
3" x 3".

- 8 Lay out one brown half-square-triangle unit, one white 3" square, and one 3" x 5½" rectangle in two horizontal rows as shown. Join the square and half-square-triangle unit. Press. Join the pieced squares to the whole rectangle. Press. Repeat to piece a total of two corner units and two mirror-image corner units measuring 5½" square, including the seam allowances.



Make 2 corner units and
2 mirror-image corner units,
5½" x 5½".

- 9 Lay out the square-in-a-square unit from step 2, the four completed star-point background units from step 5, and the four corner units and mirror-image corner units from step 8 in three horizontal rows as shown. Join the units in each row. Press. Join the rows. The pieced center star unit should measure 20½" square, including the seam allowances.



Center star unit,
20½" x 20½"

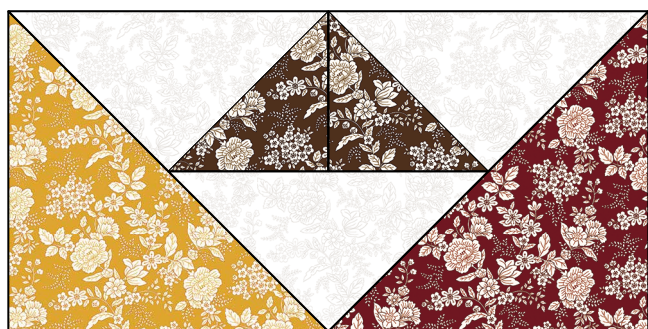
COMPLETING the QUILT CENTER

- 1 Choose eight white $5\frac{1}{2}$ " x $10\frac{1}{2}$ " rectangles and the eight brown $5\frac{1}{2}$ " squares. Follow step 3 of "Piecing the Center Star Unit" on page 3 to make four pieced rectangles and four pieced mirror-image rectangles measuring $5\frac{1}{2}$ " x $10\frac{1}{2}$ ", including the seam allowances.



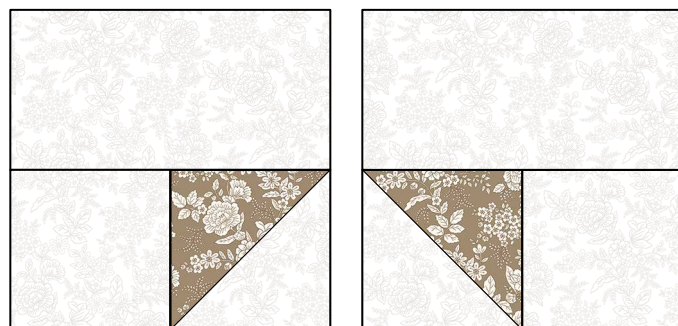
Make 4 units and 4 mirror-image units,
 $5\frac{1}{2}$ " x $10\frac{1}{2}$ ".

- 2 Using four white $5\frac{1}{2}$ " x $20\frac{1}{2}$ " rectangles and the pieced rectangles and pieced mirror-image rectangles from the previous step, refer once again to "Piecing the Center Star Unit" and follow steps 4 and 5 to piece four completed star-point background units measuring $10\frac{1}{2}$ " x $20\frac{1}{2}$ ", including the seam allowances.



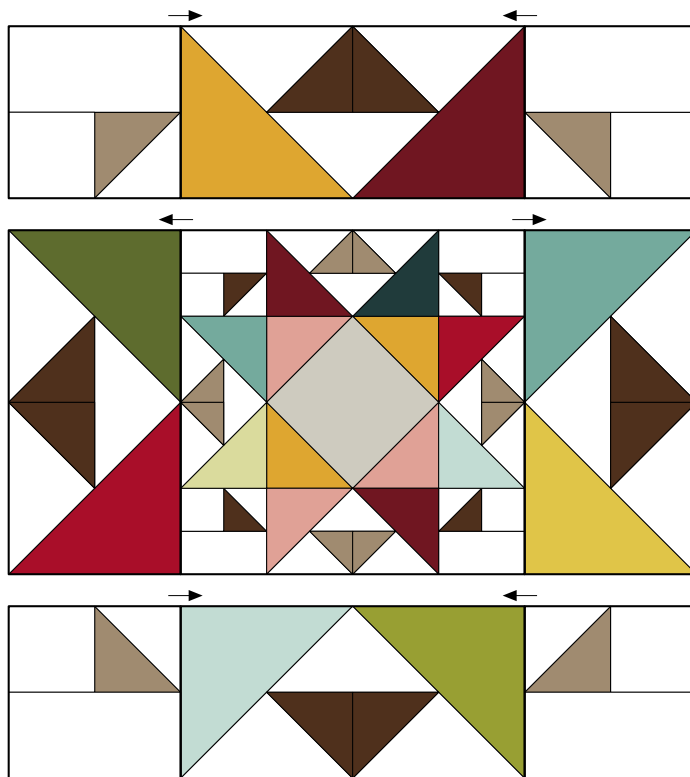
Make 4 completed star-point background units,
 $10\frac{1}{2}$ " x $20\frac{1}{2}$ ".

- 3 Select the remaining four white $5\frac{1}{2}$ " x $10\frac{1}{2}$ " rectangles, the four white $5\frac{1}{2}$ " squares, and the four taupey-gray and four white triangles cut from 6" squares. Once again referring to "Piecing the Center Star Unit" beginning on page 3, use the triangles and follow step 7 to make four taupey-gray half-square-triangle units measuring $5\frac{1}{2}$ " square. Next, use the newly pieced taupey-gray half-square-triangle units, the white $5\frac{1}{2}$ " squares, and the white $5\frac{1}{2}$ " x $10\frac{1}{2}$ " rectangles to follow step 8 and piece two corner units and two mirror-image corner units measuring $10\frac{1}{2}$ " square, including the seam allowances.



Make 2 corner units and 2 mirror-images corner units,
 $10\frac{1}{2}$ " x $10\frac{1}{2}$ ".

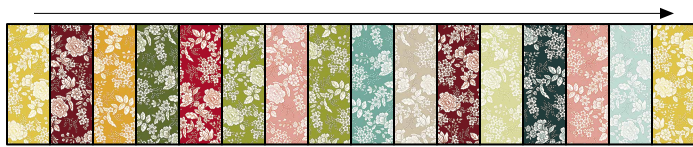
- 4 Referring to the assembly diagram, lay out the completed star-point background units from step 2, the two corner units and two mirror-image corner units from step 3, and the previously pieced center star unit in three horizontal rows as shown. Join the units in each row. Press. Join the rows. Press. The pieced quilt center should now measure $40\frac{1}{2}$ " square, including the seam allowances.



Assembly diagram.
Quilt center, $40\frac{1}{2}$ " x $40\frac{1}{2}$ "

PIECING and ADDING the PIANO KEY BORDER

- ❶ Use the four white and four brown triangles cut from 11" squares to piece, press, and trim four large half-square-triangle units as previously instructed, with the new brown units measuring 10½" square, including the seam allowances.
- ❷ Select all of the assorted-print 3" x 7½" rectangles. Choosing the prints randomly, lay out, stitch, and press 16 rectangles side by side to form a piano key unit. Repeat for a total of four pieced piano key units measuring 7½" x 40½", including the seam allowances.



Make 4 piano key units,
7½" x 40½".

- ❸ Join a piano key unit from step 2 to a white 3½" x 40½" strip. Press. Repeat for a total of four pieced border units measuring 10½" x 40½", including the seam allowances.



Make 4 border units,
10½" x 40½".

- ❹ Referring to the quilt image pictured on the handout cover, join a pieced border unit to the right and left sides of the quilt center. Press the seam allowances toward the newly added borders.
- ❺ Again referring to the quilt image on the handout cover, join a brown half-square-triangle unit from step 1 to each end of the remaining pieced border units. Press the seam allowances toward the piano key patchwork. Join these completed units to the remaining sides of the quilt top. Press the seam allowances away from the quilt center. The completed quilt top should measure 60½" square, including the seam allowances.

COMPLETING THE QUILT

Layer and baste the quilt top, batting, and backing. Quilt the layers. Join the gray 2½"-wide binding strips to make a 252" length of binding, and use it to bind the quilt.



©2024 Kim Diehl

Every effort has been made to ensure that all projects are error free. All the information is presented in good faith, however no warranty can be given nor results guaranteed as we have no control over the execution of instructions. Therefore, we assume no responsibility for the use of this information or damages that may occur as a result. When errors are brought to our attention, we make every effort to correct and post a revision as soon as possible. Please make sure to check www.henryglassfabrics.com for pattern updates prior to starting the project. We also recommend that you test the project prior to cutting for kits. Finally, all free projects are intended to remain free to you and are not for resale or other forms of distribution.