

TRANQUILITY

WINDOWPANE PATCHWORK QUILT

BY KIM DIEHL



Finished quilt size: 60½" x 60½"
A Free Project Sheet from

 **Henry Glass & Co., Inc.**



49 West 37th Street, New York, NY 10018
tel: 212-686-5194 • fax: 212-532-3525
Toll-free: 800-294-9495
www.henryglassfabrics.net

[facebook](#)

TRANQUILITY

WINDOWPANE PATCHWORK QUILT

Finished quilt size: 60½" x 60½"

Finished block size: 8" x 8"

MATERIALS

Yardages are based on a 42" width of useable fabric after prewashing and removing selvages. Fat quarters measure 18" x 21". Fat eighths measure 9" x 21".



826-01W
White
1 yard



826-22
Pink
fat quarter



826-30
Orange
fat quarter



826-33
Brown
fat quarter



826-44
Yellow
fat quarter



826-60
Celery
fat quarter



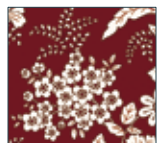
826-66
Pine
fat quarter



826-77
Teal
fat quarter



826-80
Red
fat quarter



826-88
Wine
fat quarter



826-90
Gray
fat quarter



826-111
Turquoise
fat quarter



826-606
Avocado
fat quarter



826-909
Taupey-Gray
fat quarter



826-1111
Aqua
fat quarter

In addition to the itemized fabrics, you'll need:

- 1 square of batting, 67" x 67"
- 3¾ yards of backing fabric (Kim suggests Aqua, 826-1111)
- Standard sewing and quilting supplies

CUTTING

Cut all pieces across the width of the fabric in the order given unless otherwise noted. WOF is defined as width of fabric.

Please cut all patchwork pieces carefully to conserve the scraps needed for use in the scrappy binding.

For a little extra cushion when cutting and preparing the binding, you can opt to use Kim's chubby binding method using 2"-wide strips (rather than traditional 2½"-wide strips), as outlined in any of her "Simple" books.

From each of the 14 assorted-print fat quarters (excluding the white print), cut:

3 strips, 2½" x WOF (combined total of 42)

From one strip of each color, cut 2 rectangles, 2½" x 8½" (combined total of 28), and 1 square, 2½" x 2½" (combined total of 14)

Crosscut the remaining 2 strips from each color into 13 squares, 2½" x 2½" (combined total of 182, grand total of 196 with the previously cut 2½" squares)

Reserve the remainder of all 14 assorted prints for additional patchwork, taking extra care to save the ends of all 2½"-wide rows for use in the binding.

From the reserved remainder of 11 of your favorite assorted prints, cut:

1 strip, 8½" x WOF (combined total of 11); crosscut each strip into 2 squares, 8½" x 8½" (combined total of 22)

Reserve all scraps from the 11 assorted prints for use in the binding.

From the reserved remainder of the 3 prints remaining from the original group of 14, cut:

1 strip, 8½" x WOF (combined total of 3); from each strip, cut 1 square, 8½" x 8½" (combined total of 3, grand total of 25 with previously cut 8½" squares)

Reserve all scraps from these 3 assorted prints for use in the binding.

From the reserved scraps of all 14 assorted prints, cut:

Enough 2½"-wide pieces in random lengths to make a 252" length of binding when joined together end to end; incorporating even the smallest 2½"-wide pieces will add charm to the finished binding. (For Kim's chubby binding method outlined in each of her "Simple" books, reduce the width to 2", producing even more available pieces for the binding.)

From the white print, cut:

12 strips, 1½" x WOF; crosscut into 48 rectangles, 1½" x 8½"
 6 strips, 2½" x WOF; crosscut into 24 rectangles, 2½" x 8½"

PIECING the PATCHWORK BLOCKS

Sew all pieces with right sides together using a ¼" seam allowance unless otherwise noted. Press the seam allowances as indicated by the arrows or otherwise directed.

- 1 Choosing the prints randomly, join four assorted-print 2½" squares end to end. Press. Repeat to sew a total of 48 pieced rectangles measuring 2½" x 8½", including the seam allowances. Reserve the remaining four assorted-print 2½" squares for use in the border.



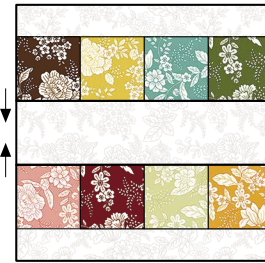
Make 48 pieced rectangles, 2½" x 8½".

- 2 Join a pieced rectangle from step 1 to a white 1½" x 8½" rectangle. Press. Repeat to piece a total of 48 patchwork units measuring 3½" x 8½", including the seam allowances.



Make 48 patchwork units, 3½" x 8½".

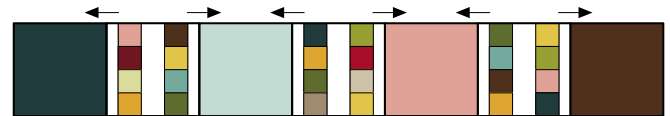
- 3 Lay out two pieced patchwork units and one white 2½" x 8½" rectangle as shown. Join the pieces. Press. Repeat to piece a total of 24 Patchwork blocks measuring 8½" square, including the seam allowances.



Make 24 Patchwork blocks, 8½" x 8½".

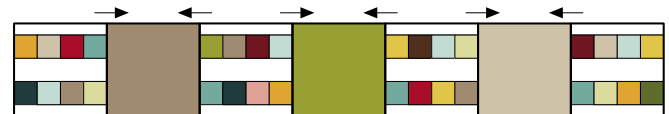
PIECING the QUILT CENTER

- 1 Choosing the prints randomly, lay out four assorted-print 8½" squares and three Patchwork blocks in alternating positions as shown. Join the pieces. Press. Repeat to piece a total of four A rows measuring 8½" x 56½", including the seam allowances.



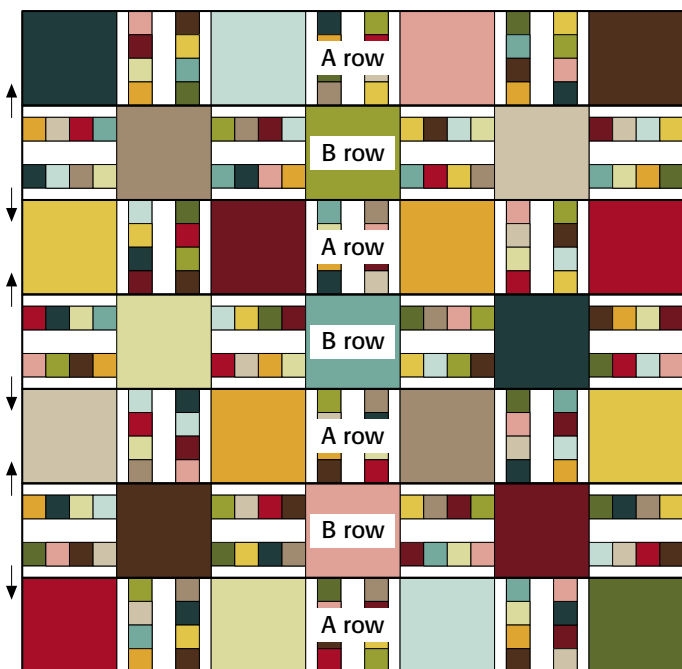
Make 4 A rows, 8½" x 56½".

- 2 Again choosing the prints randomly, lay out three assorted-print 8½" squares and four Patchwork blocks in alternating positions as shown. Join the pieces. Press. Repeat to piece a total of three B rows measuring 8½" x 56½", including the seam allowances.



Make 3 B rows, 8½" x 56½".

- 3 Lay out the pieced A and B rows in alternating positions as shown. Join the rows. Press. The pieced quilt center should measure 56½" square, including the seam allowances.



Quilt center,
56½" x 56½"

PIECING and ADDING the BORDER

- 1 Choosing the prints randomly, join seven assorted-print 2½" x 8½" rectangles end to end. Press. Repeat to piece four border strips measuring 2½" x 56½", including the seam allowances.



Make 4 border strips,
2½" x 56½".

- 2 Join a pieced border strip to the right and left side of the quilt center. Press the seam allowances toward the border strips.
- 3 Join one reserved assorted-print 2½" square to each end of the two remaining border strips. Press the seam allowances away from the newly added squares. The completed border strips should measure 2½" x 60½", including the seam allowances.
- 4 Join the completed border strips to the top and bottom edges of the quilt center. Press the seam allowances toward the top and bottom border strips.

COMPLETING the QUILT

Layer and baste the quilt top, batting, and backing. Quilt the layers. Using straight (not diagonal) seams, join the random lengths of 2½"-wide pieces cut from scraps to make a 252" length of binding, and use it to bind the quilt.



©2023 Kim Diehl

Every effort has been made to ensure that all projects are error free. All the information is presented in good faith, however no warranty can be given nor results guaranteed as we have no control over the execution of instructions. Therefore, we assume no responsibility for the use of this information or damages that may occur as a result. When errors are brought to our attention, we make every effort to correct and post a revision as soon as possible. Please make sure to check www.henryglassfabrics.com for pattern updates prior to starting the project. We also recommend that you test the project prior to cutting for kits. Finally, all free projects are intended to remain free to you and are not for resale or other forms of distribution.