

Tradition Continues II

jan shade beach

••••• A Free Project Sheet •••••
••••• NOT FOR RESALE •••••

By Jan Shade Beach



Quilt Design by Heidi Pridemore

Quilt 1

Skill Level: Advanced Beginner

 Henry Glass & Co., Inc.



facebook

Finished Quilt Size: 55" x 63"
49 West 37th Street, New York, NY 10018
tel: 212-686-5194 fax: 212-532-3525
Toll Free: 800-294-9495
www.henryglassfabrics.net
Please check our website for pattern updates before starting this project.

TRADITION CONTINUES II Quilt 1

Fabrics in the Collection



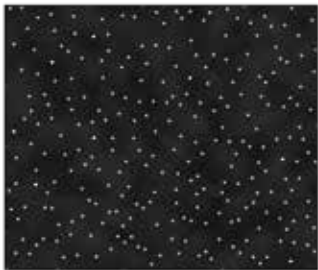
24" repeat, 11" Blocks
Black/Red – 9723-88



Small Red Trucks on Black
Black – 9724-99



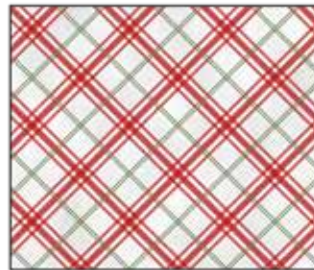
Snow on Red
Red – 9725-88



Snow on Black
Black – 9725-99



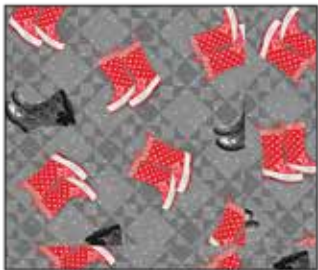
Large Red and White Truck
Allover - Black – 9726-99



Red and White Bias Plaid
Multi – 9727-8



Medium Trucks Allover
Gray – 9728-98



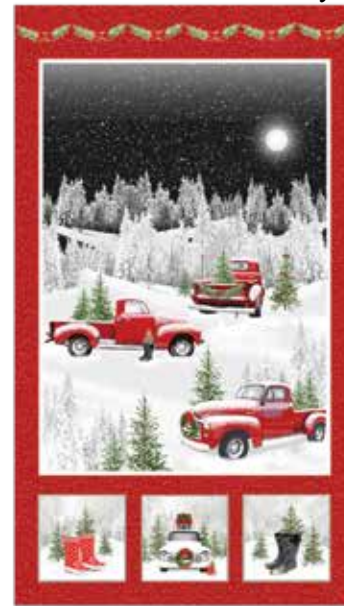
Snow Boot Toss
Gray – 9729-90



5" Blocks Running Yardage
Multi – 9730-88



Truck Novelty Stripe
Multi – 9731-89



24" Panel, Trucks in the Forest
Multi – 9732P-88

Materials

1 panel	24" Panel, Trucks in the Forest - Multi (A)	9732P-88
½ yard	Snow on Black - Black (B)	9725-99
1 ¼ yards	Snow on Red - Red (C)	9725-88*
1 row of blocks	5" Blocks Running Yardage - Multi (D)	9730-88
1 yard	Truck Novelty Stripe - Multi (E)	9731-89
½ yard	Red and White Bias Plaid - Multi (F)	9727-8
1 ½ yards	Large Red and White Truck Allover - Black (G)	9726-99
4 yards	Small Red Trucks on Black - Black (Backing)	9724-99

*Includes binding

Cutting Instructions

Please note: All strips are cut across the width of fabric (WOF) from selvage to selvage edge unless otherwise noted.

From the 24" Panel, Trucks in the Forest - Multi (A):

- (1) 20 ½" x 28 ½" rectangle, centered on the large panel.
- (3) 5 ½" squares, each centered on a small block.

From the Snow on Black - Black (B), cut:

- (2) 2" x 28 ½" WOF strips.
- (2) 2" x 23 ½" WOF strips.
- (2) 1 ½" x WOF strips. Sub-cut (8) 1 ½" x 5 ½" strips.
- (2) 1 ½" x WOF strips. Sub-cut (8) 1 ½" x 7 ½" strips.

From the Snow on Red - Red (C), cut:

- (2) 1 ½" x 30 ½" WOF strips.
- (2) 1 ½" x 24 ½" WOF strips.
- (2) 1 ½" x WOF strips. Sub-cut (8) 1 ½" x 5 ½" strips.
- (2) 1 ½" x WOF strips. Sub-cut (8) 1 ½" x 7 ½" strips.
- (3) 1 ¼" x WOF strips. Sew the strips together end to end with diagonal seams and cut (2) 1 ¼" x 44 ½" strips.
- (2) 1 ¼" x 38" WOF strips.
- (3) 1 ¼" x WOF strips. Sew the strips together end to end with diagonal seams and cut (2) 1 ¼" x 50" strips.
- (3) 1 ¼" x WOF strips. Sew the strips together end to end with diagonal seams and cut (2) 1 ¼" x 43 ½" strips.
- (6) 2 ½" x WOF strips for the binding.

From the 5" Blocks Running Yardage - Multi (D), cut:

- (1) 5 ½" x WOF strip. Sub-cut (5) 5 ½" squares.

From the Truck Novelty Stripe - Multi (E), cut:

- (2) 6 ½" x 32 ½" Length of Fabric (LOF) strips.
- (2) 6 ½" x 24 ½" LOF strips.

From the Red and White Bias Plaid - Multi (F), cut:

- (3) 2 ½" x WOF strips. Sew the strips together end to end with diagonal seams and cut (2) 2 ½" x 46" strips.
- (2) 2 ½" x 42" WOF strips.

From the Large Red and White Truck Allover - Black (G), cut:

- (2) 6 ½" x 51 ½" LOF strips.
- From the remaining fabric, cut (2) 6 ½" x 43 ½" WOF strips, piece as needed.

From the Small Red Trucks on Black - Black (Backing), cut:

- (2) 71" x WOF strips for the backing. Sew the strips together and trim to make the 63" x 71" back.

Block Assembly

Note: The arrows in figures represent the fabric print direction. Pay attention to the fabric and unit orientations when assembling the various components. Use a ¼" seam allowance with right sides together (RST) unless otherwise noted.

1. Sew (1) 2" x 28 ½" Fabric B strip to each side of the 20 ½" x 28 ½" Fabric A large panel. Sew (1) 2" x 23 ½" Fabric B strip to the top and to the bottom of the Fabric A large panel to make the Center Block (Fig. 1). **Trim the block to measure 22 ½" x 30 ½"**.

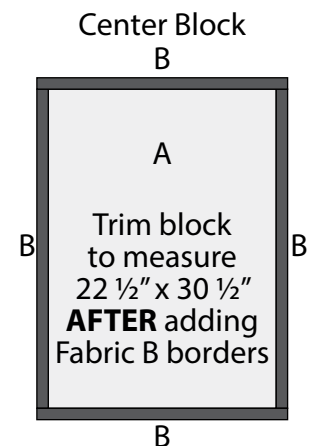


Fig. 1

2. Sew (1) 1 ½" x 5 ½" Fabric B strip to each side of (1) 5 ½" Fabric A square. Sew (1) 1 ½" x 7 ½" Fabric B strip to the top and to the bottom of the Fabric A square to make (1) Block One square (Fig. 2). **Trim the block to measure 6 ½" x 6 ½"**. Repeat to make (3) Block One squares total.

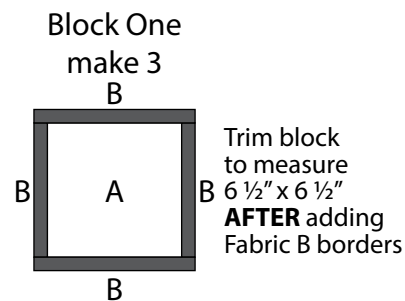


Fig. 2

3. Sew (1) $1\frac{1}{2}$ " x $5\frac{1}{2}$ " Fabric B strip to each side of (1) $5\frac{1}{2}$ " Fabric D square. Sew (1) $1\frac{1}{2}$ " x $7\frac{1}{2}$ " Fabric B strip to the top and to the bottom of the Fabric D square to make (1) Block Two square (Fig. 3). **Trim the block to measure $6\frac{1}{2}$ " x $6\frac{1}{2}$ ".**

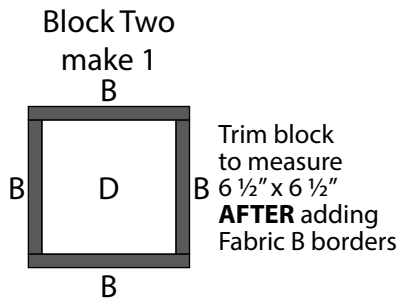


Fig. 3

4. Sew (1) $1\frac{1}{2}$ " x $5\frac{1}{2}$ " Fabric C strip to each side of (1) $5\frac{1}{2}$ " Fabric D square. Sew (1) $1\frac{1}{2}$ " x $7\frac{1}{2}$ " Fabric C strip to the top and to the bottom of the Fabric D square to make (1) Block Three square (Fig. 4). **Trim the block to measure $6\frac{1}{2}$ " x $6\frac{1}{2}$ ".** Repeat to make (4) Block Three squares total.

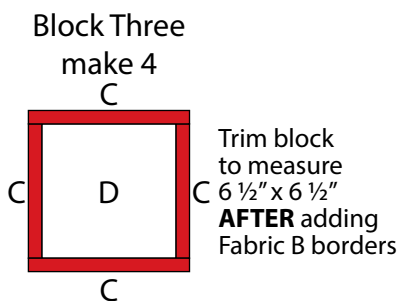
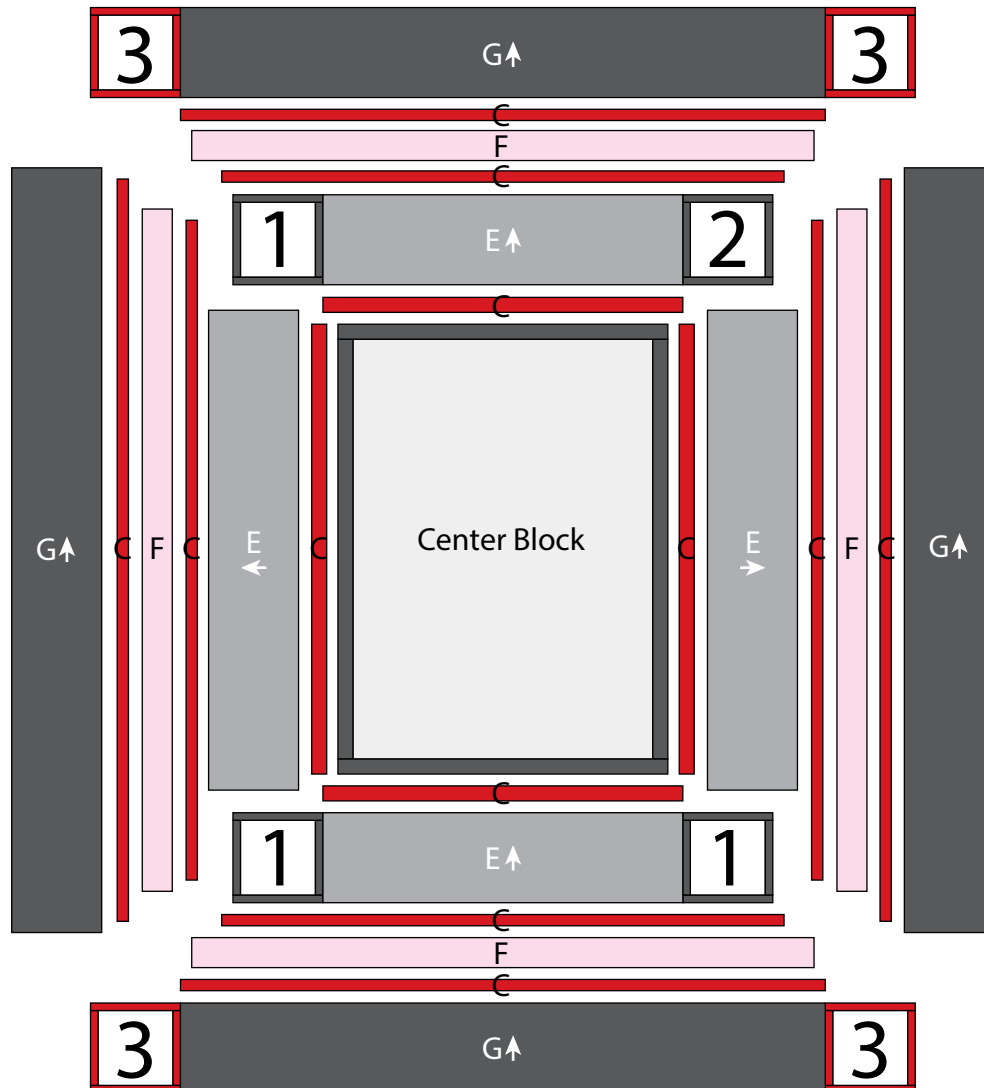


Fig. 4

Quilt Top Assembly

(Follow the Quilt Layout while assembling the quilt top.)

5. Sew (1) $1\frac{1}{2}$ " x $30\frac{1}{2}$ " Fabric C strip to each side of the Center Block. Sew (1) $1\frac{1}{2}$ " x $24\frac{1}{2}$ " Fabric C strip to the top and to the bottom of the Center Block.
6. Sew (1) $6\frac{1}{2}$ " x $32\frac{1}{2}$ " Fabric E to each side of the Center Block.
7. Sew together (1) Block One square, (1) $6\frac{1}{2}$ " x $24\frac{1}{2}$ " Fabric E strip and (1) Block Two square, in that order from left to right. Sew the newly sewn strip to the top of the Center Block.
8. Sew (1) Block One square to each end of (1) $6\frac{1}{2}$ " x $24\frac{1}{2}$ " Fabric E strip. Sew the newly sewn strip to the bottom of the Center Block.
9. Sew (1) $1\frac{1}{4}$ " x $44\frac{1}{2}$ " Fabric C strip to each side of the Center Block. Sew (1) $1\frac{1}{4}$ " x 38 " Fabric C strip to the top and to the bottom of the Center Block.
10. Sew (1) $2\frac{1}{2}$ " x 46 " Fabric F strip to each side of the Center Block. Sew (1) $2\frac{1}{2}$ " x 42 " Fabric F strip to the top and to the bottom of the Center Block.
11. Sew (1) $1\frac{1}{4}$ " x 50 " Fabric C strip to each side of the Center Block. Sew (1) $1\frac{1}{4}$ " x $43\frac{1}{2}$ " Fabric C strip to the top and to the bottom of the Center Block.
12. Sew (1) $6\frac{1}{2}$ " x $51\frac{1}{2}$ " Fabric G strip to each side of the Center Block. Sew (1) Block Three square to each end of (1) $6\frac{1}{2}$ " x $43\frac{1}{2}$ " Fabric G strip. Repeat to make a second strip. Sew the newly sewn strips to the top and to the bottom of the Center Block to make the quilt top.
13. Layer and quilt as desired.
14. Sew the (6) $2\frac{1}{2}$ " x WOF Fabric C strips together, end to end with 45-degree seams, to make the binding. Fold this long strip in half lengthwise with wrong sides together and press.
15. Bind as desired.



Quilt Layout

Every effort has been made to ensure that all projects are error free. All the information is presented in good faith, however no warranty can be given nor results guaranteed as we have no control over the execution of instructions. Therefore, we assume no responsibility for the use of this information or damages that may occur as a result. When errors are brought to our attention, we make every effort to correct and post a revision as soon as possible. Please make sure to check www.henryglassfabrics.net for pattern updates prior to starting the project. We also recommend that you test the project prior to cutting for kits. Finally, all free projects are intended to remain free to you and are not for resale.