

Teddy's America

A Free Project Sheet
NOT FOR RESALE

By Robert Giordano



Quilt Design by Heidi Pridemore

Quilt 1

Skill Level: Advanced Beginner



Henry Glass & Co., Inc.



facebook

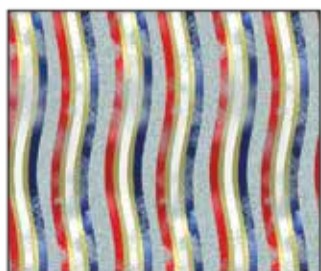
Finished Quilt Size: 64" x 72"
49 West 37th Street, New York, NY 10018
tel: 212-686-5194 fax: 212-532-3525
Toll Free: 800-294-9495
www.henryglassfabrics.net

Please check our website for pattern updates before starting this project.

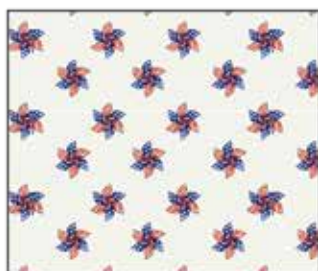
TEDDY'S AMERICA Quilt 1

Finished Quilt Size: 64" x 72"

Fabrics in the Collection



Distressed Texture Stripe
Light Blue – 9578-11



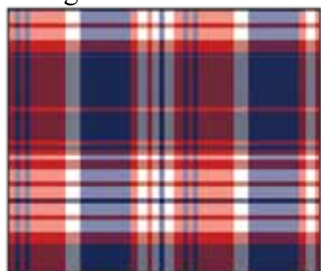
Wind Spinner
Ecru – 9579-12



Tossed Teddy with Flag
Light Blue – 9580-11



Tossed Flag
Royal – 9581-17



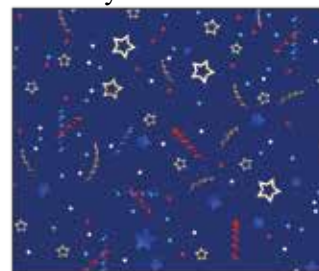
Plaid
Navy – 9582-77



Heart Balloon
White – 9583-1



Packed Teddy
Navy – 9584-77



Confetti Allover
Navy – 9585-77



Tossed Allover Teddy
Navy – 9586-77



Border Stripe
Tan – 9587-44



Teddy Continuous Block
Light Blue – 9588-11



Teddy Bear Panel
Navy – 9589P-77

Select Fabrics from
Modern Melody Basics



Navy
1063-77



Crimson Red
1063-88



Dark Gray
1063-91

TEDDY'S AMERICA

Quilt 1

Page 1

Materials

1 panel	Teddy Bear Panel - Navy (A)	9589P-77
$\frac{7}{8}$ yard	Plaid - Navy (B)	9582-77*
1 $\frac{1}{8}$ yards	Modern Melody Basics - Dark Gray (C)	1063-91
$\frac{2}{3}$ yard	Modern Melody Basics - Crimson Red (D)	1063-88
$\frac{1}{2}$ yard	Wind Spinner - Ecru (E)	9579-12
$\frac{3}{8}$ yard	Modern Melody Basics - Navy (F)	1063-77
$\frac{3}{4}$ yard	Tossed Flag - Royal (G)	9581-17
1 $\frac{1}{4}$ yards	Border Stripe - Tan (H)	9587-44
1 $\frac{1}{4}$ yards	Packed Teddy - Navy (I)	9584-77
$\frac{7}{8}$ yard	Teddy Continuous Block - Light Blue (J)	9588-11
4 yards	Tossed Allover Teddy - Navy (Backing)	9586-77

*Includes binding

Cutting Instructions

Please note: All strips are cut across the width of fabric (WOF) from selvage to selvage edge unless otherwise noted.

From the Teddy Bear Panel - Navy (A), fussy cut:

- (1) 20 $\frac{1}{2}$ " x 29 $\frac{1}{2}$ " rectangle, centered on the teddy block.
- (2) 20" x 4 $\frac{1}{2}$ " strips, each centered on a word block.

From the Plaid - Navy (B), cut:

- (2) 2 $\frac{1}{2}$ " x 29 $\frac{1}{2}$ " WOF strips.
- (2) 2" x 24 $\frac{1}{2}$ " WOF strips.
- (7) 2 $\frac{1}{2}$ " x WOF strips for the binding.

From the Modern Melody Basics - Dark Gray (C), cut:

- (3) 2" x WOF strips. Sub-cut (8) 2" x 13 $\frac{1}{2}$ " strips.
- (4) 2" x WOF strips. Sub-cut (8) 2" x 16 $\frac{1}{2}$ " strips.
- (2) 1 $\frac{1}{2}$ " x 40 $\frac{1}{2}$ " WOF strips.
- (2) 1 $\frac{1}{2}$ " x 34 $\frac{1}{2}$ " WOF strips.
- (2) 1 $\frac{1}{4}$ " x 31" WOF strips.
- (2) 1 $\frac{1}{4}$ " x 24 $\frac{1}{2}$ " WOF strips.
- (4) 1 $\frac{1}{4}$ " x 42 $\frac{1}{2}$ " WOF strips, piece as needed.
- (4) 1 $\frac{1}{4}$ " x 34 $\frac{1}{2}$ " WOF strips.

From the Modern Melody Basics - Crimson Red (D), cut:

- (3) 2 $\frac{7}{8}$ " x WOF strips. Sub-cut (32) 2 $\frac{7}{8}$ " squares.
- (1) 2 $\frac{1}{2}$ " x WOF strip. Sub-cut (4) 2 $\frac{1}{2}$ " x 4 $\frac{1}{2}$ " strips.
- (4) 2" x 24" WOF strips.

From the Wind Spinner - Ecru (E), cut:

- (5) 2 $\frac{7}{8}$ " x WOF strips. Sub-cut (64) 2 $\frac{7}{8}$ " squares.

From the Modern Melody Basics - Navy (F), cut:

- (3) 2 $\frac{7}{8}$ " x WOF strips. Sub-cut (32) 2 $\frac{7}{8}$ " squares.

From the Tossed Flag - Royal (G), cut:

- (2) 4 $\frac{1}{4}$ " x 42 $\frac{1}{2}$ " WOF strips, piece as needed.
- (2) 4 $\frac{1}{4}$ " x 34 $\frac{1}{2}$ " WOF strips.

From the Border Stripe - Tan (H), fussy cut:

- (2) 6 $\frac{1}{2}$ " x 42 $\frac{1}{2}$ " Length of Fabric (LOF) strips, each centered on a row of teddies.
- (4) 6 $\frac{1}{2}$ " squares, each centered on teddies, from the remaining fabric.

From the Packed Teddy - Navy (I), cut:

- (2) 4 $\frac{1}{4}$ " x 42 $\frac{1}{2}$ " LOF strips.
- (2) 4 $\frac{1}{4}$ " x 34 $\frac{1}{2}$ " LOF strips.

From the Teddy Continuous Block - Light Blue (J):

- Fussy cut (4) 13 $\frac{1}{2}$ " squares, each centered on a block.

From the Tossed Allover Teddy - Navy (Backing), cut:

- (2) 72" x WOF strips for the backing. Sew the strips together and trim to make the 72" x 80" back.

Block Assembly

Note: The arrows in figures represent the fabric print direction. Pay attention to the fabric and unit orientations when assembling the various components.

1. Sew (1) 2 $\frac{1}{2}$ " x 29 $\frac{1}{2}$ " Fabric B strip to each side of (1) 20 $\frac{1}{2}$ " x 29 $\frac{1}{2}$ " Fabric A panel. Sew (1) 2" x 24 $\frac{1}{2}$ " Fabric B strip to the top and to the bottom of the Fabric A panel to make the Center Block (Fig. 1). **Trim the block to measure 23" x 31".**

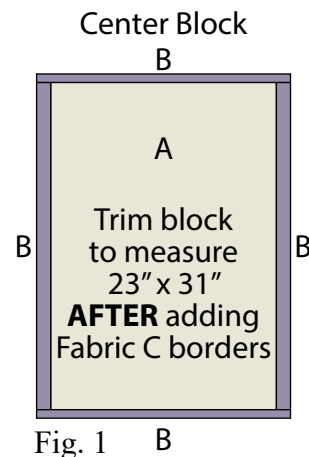


Fig. 1 B

2. Place (1) 2 $\frac{7}{8}$ " Fabric E square on top of (1) 2 $\frac{7}{8}$ " Fabric D square, right sides together. Draw a line across the diagonal of the top square (Fig. 2). Sew $\frac{1}{4}$ " away from each side of the drawn diagonal line (Fig. 2). Cut the (2) squares apart on the drawn diagonal line (Fig. 3) to make (2) half-square triangles. Trim the half-square triangles to measure 2 $\frac{1}{2}$ " square to make (2) Unit 1 squares (Fig. 4). Repeat to make (64) Unit 1 squares total.

3. Repeat Step 2 and refer to Figure 5 for fabric identification and placement to make (64) Unit 2 squares.

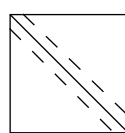


Fig. 2

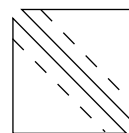


Fig. 3

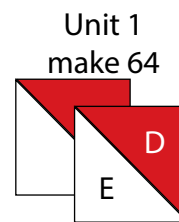


Fig. 4

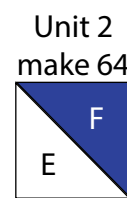


Fig. 5

TEDDY'S AMERICA

Quilt 1

Page 2

4. Sew (1) Unit 1 square to the left side of (1) Unit 2 square to make the top row. Sew (1) Unit 2 square to the left side of (1) Unit 1 square to make the bottom row. Sew the (2) rows together lengthwise to make (1) 4 ½" Unit 3 square (Fig. 6). Repeat to make (32) Unit 3 squares total.

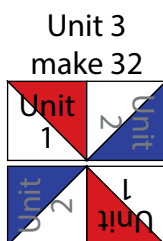


Fig. 6

5. Sew together (8) Unit 3 squares to make (1) Inner Side Border (Fig. 7). Repeat to make a second Inner Side Border.

Inner Side Border
make 2



Fig. 7

6. Sew together (8) Unit 3 squares to make the Inner Top Border (Fig. 8). Repeat to make the Inner Bottom Border.

Inner Top/Bottom Border
make 2



Fig. 8

7. Sew (1) 4 ¼" x 42 ½" Fabric I strip, (1) 1 ¼" x 42 ½" Fabric C strip, (1) 6 ½" x 42 ½" Fabric H strip, (1) 1 ¼" x 42 ½" Fabric C strip and (1) 4 ¼" x 42 ½" Fabric G strip together lengthwise and in that order left to right to make the Outer Left Side Border (Fig. 9).

Outer Left Side Border

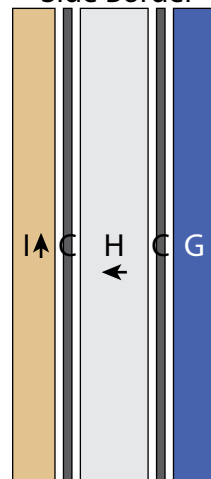


Fig. 9

Outer Right Side Border

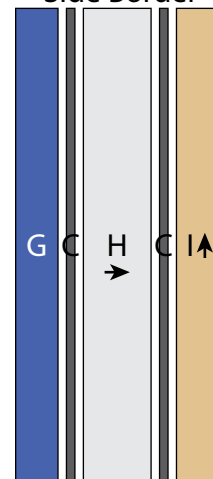


Fig. 10

8. Repeat Step 7 and refer to Figure 10 for fabric identification, placement and orientation to make the Outer Right Side Border.

9. Sew (1) 2" x 13 ½" Fabric C strip to each side of (1) 13 ½" Fabric J square. Sew (1) 2" x 16 ½" Fabric C strip to the top and to the bottom of the Fabric J square to make (1) Block One square (Fig. 11). **Trim the block to measure 15 ½" x 15 ½"**. Repeat to make (4) Block One squares total.

Block One
make 4

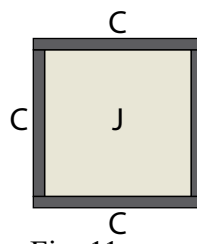


Fig. 11

Trim block to measure
15 ½" x 15 ½"
AFTER adding
Fabric C borders

10. Sew (1) 2 ½" x 4 ½" Fabric D strip to each side of (1) 20" x 4 ½" Fabric A strip. Sew (1) 2" x 24" Fabric D strip to the top and to the bottom of the Fabric A strip to make (1) Unit 4 strip (Fig. 12). **Trim the unit to measure 22 ½" x 6 ½"**. Repeat to make a second Unit 4 strip.

Unit 4
make 2

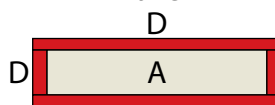


Fig. 12

Trim block to measure
22 ½" x 6 ½"
AFTER
adding Fabric C borders

11. Sew (1) 6 ½" Fabric H square to each end of (1) Unit 4 strip. Sew 1 ¼" x 34 ½" (1) Fabric C strip to the top and to the bottom of the newly sewn strip. Sew (1) 4 ¼" x 34 ½" Fabric I strip to the top of the newly sewn strip and (1) 4 ¼" x 34 ½" Fabric G strip to the bottom to make (1) Block Two strip (Fig. 13).

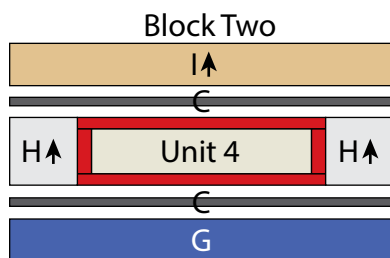


Fig. 13

12. Repeat Step 11 and refer to Figure 14 for component, identification, placement and orientation to make (1) Block Three strip.

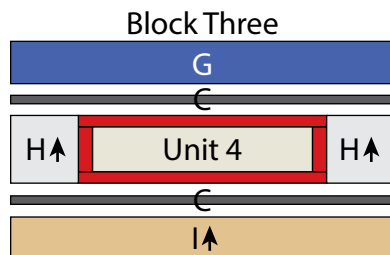


Fig. 14

13. Sew (1) Block One square to each end of the Block Two strip to make the Outer Top Border (Fig. 15 below).

14. Sew (1) Block One square to each end of the Block Three strip to make the Outer Bottom Border (Fig. 16 below).

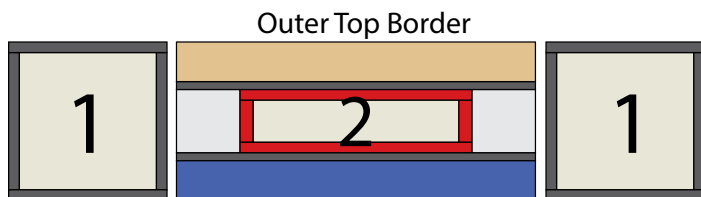


Fig. 15

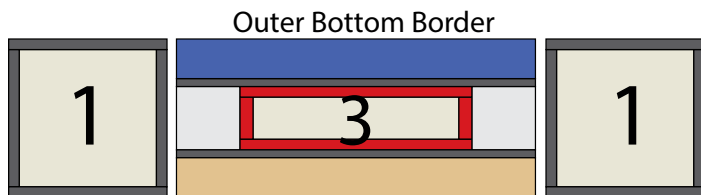


Fig. 16

Quilt Top Assembly

(Follow the Quilt Layout while assembling the quilt top.)

15. Sew (1) 1 ¼" x 31" Fabric C strip to each side of the Center Block. Sew (1) 1 ¼" x 24 ½" Fabric C strip to the top and to the bottom of the Center Block.

16. Sew (1) Inner Side Border to each side of the Center Block. Sew the Inner Top Border and Inner Bottom Border to the top and to the bottom of the Center Block.

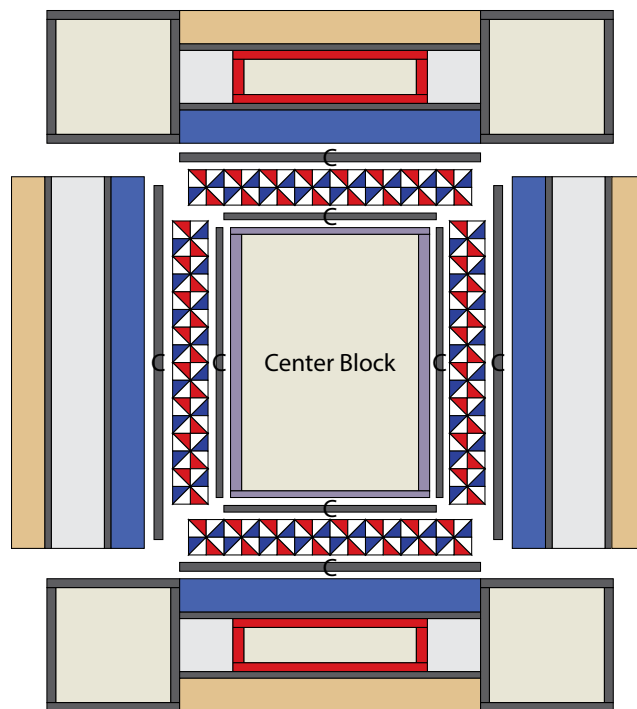
17. Sew (1) 1 ½" x 40 ½" Fabric C strip to each side of the Center Block. Sew (1) 1 ½" x 34 ½" Fabric C strip to the top and to the bottom of the Center Block.

18. Sew the Outer Left Side Border and Outer Right Side Border to the left and to the right side of the Center Block. Sew the Outer Top Border and Outer Bottom Border to the top and to the bottom of the Center Block to make the quilt top.

19. Layer and quilt as desired.

20. Sew the (7) 2 ½" x WOF Fabric B strips together, end to end with 45-degree seams, to make the binding. Fold this long strip in half lengthwise with wrong sides together and press.

21. Bind as desired.



Quilt Layout

Every effort has been made to ensure that all projects are error free. All the information is presented in good faith, however no warranty can be given nor results guaranteed as we have no control over the execution of instructions. Therefore, we assume no responsibility for the use of this information or damages that may occur as a result. When errors are brought to our attention, we make every effort to correct and post a revision as soon as possible. Please make sure to check www.henryglassfabrics.net for pattern updates prior to starting the project. We also recommend that you test the project prior to cutting for kits. Finally, all free projects are intended to remain free to you and are not for resale.