

Butter Churn Basics Collection

Star Struck Lap Quilt

by Kim Diehl



Finished Quilt Size: 64½" x 64½"

Finished Star Block Size: 8" x 8"

A Free Project Sheet from



Henry Glass & Co., Inc.



49 West 37th Street, New York, NY 10018

tel: 212-686-5194 • fax: 212-532-3525

Toll-free: 800-294-9495

www.henryglassfabrics.net

facebook

Butter Churn Basics Collection

Star Struck Lap Quilt

Finished Quilt Size: 64½" x 64½"

Finished Star Block Size: 8" x 8"

PROJECT NOTES

The featured quilt uses cream prints from Kim's **Butter Churn Basics** collection, paired with additional black and assorted prints (Kim chose fabrics from her **Wit and Wisdom** line) to complete the quilt design.

MATERIALS

32 fat eighths (9" x 21") of assorted cream prints for blocks (1442-33, 44; 1443-33, 44; 1444-33, 44; 1445-33, 44; 6284-33, 44; 6285-33, 44; 6286-33, 44; 6287-33, 44; 6288-33, 44; 6289-33, 44; 6555-33, 44; 6556-33, 44; 6557-33, 44; 6558-33, 44; 6559-33, 44; 6560-33, 44)

3¾ yards of black serpentine swirls print for blocks and binding (the featured quilt uses 1422-99 from Wit and Wisdom)

6 chubby sixteenths (9" x 10½") of assorted prints for blocks (the featured quilt uses the following prints from Wit and Wisdom: orange 1420-30, teal 1421-70, plum 1424-55, gold 1425-40, green 1426-66, and red 1427-88)

2 yards of Spiced 108"-wide quilt back print (Kim suggests 0894-33)

71" x 71" square of batting

Standard sewing and quilting supplies

CUTTING

Cut all pieces across the width of the fabric in the order given unless otherwise noted.

From each of the 6 chubby sixteenths of assorted prints, cut:

11 squares, 2½" x 2½" (combined total of 66)

From the 32 fat eighths of assorted cream prints, cut a combined total of:

128 rectangles, 1½" x 2½"

128 rectangles, 1½" x 4½"

320 squares, 2½" x 2½"

From the black serpentine swirls print, cut:

41 strips, 2½" x 42"; crosscut into:

192 rectangles, 2½" x 4½"

128 squares, 2½" x 2½"

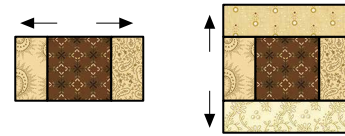
64 rectangles, 2½" x 6½"

7 binding strips, 2½" x 42"

PIECING THE CENTER UNITS FOR THE BLOCKS

Sew all pieces with right sides together and a ¼" seam allowance unless otherwise noted. Press the seam allowances as indicated by the arrows or otherwise directed.

- 1 Select a 2½" square cut from one of the six assorted prints. Choosing the prints randomly, select two cream 1½" x 2½" rectangles, and two cream 1½" x 4½" rectangles.
- 2 Join a cream 1½" x 2½" rectangle to the right and left side of the assorted print 2½" square. Press. Join a cream 1½" x 4½" rectangle to each remaining side of the patchwork unit. Press. The pieced center unit should measure 4½" square, including the seam allowances.



Make 64 units,
4½" x 4½".

- 3 Repeat steps 1 and 2 to piece a total of 64 block center units.

PIECING THE STAR BLOCKS

- 1 Choosing the cream prints randomly, use a pencil and an acrylic ruler to draw a diagonal sewing line from corner to corner on the wrong side of 256 assorted cream 2½" squares. Reserve the remaining cream 2½" squares for later use.
- 2 Layer a prepared cream 2½" square onto one end of a black serpentine swirls 2½" x 4½" rectangle as shown. Stitch the pair along the drawn diagonal line. Fold the resulting inner cream triangle open, aligning the corner with the corner of the black rectangle. Press. Trim away the layers beneath the top cream triangle, leaving a ¼" seam allowance. Repeat for a total of 128 pieced partial flying geese units measuring 2½" x 4½", including the seam allowances.



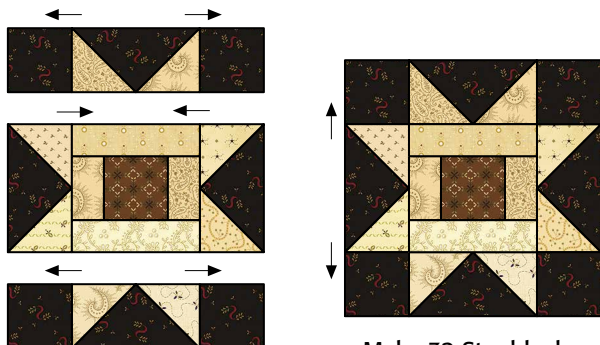
Make 128 partial units,
2½" x 4½".

- 3 Repeat step 2 to add a mirror-image cream triangle to each remaining black end of the 128 partial flying geese units. The completed flying geese units should measure $2\frac{1}{2}" \times 4\frac{1}{2}"$, including the seam allowances.



Make 128 flying-geese units,
 $2\frac{1}{2}" \times 4\frac{1}{2}"$.

- 4 Lay out one previously pieced block center unit, four flying geese units, and four black $2\frac{1}{2}"$ squares in three horizontal rows as shown. Join the pieces in each row. Press. Join the rows. Press. The pieced Star block should measure $8\frac{1}{2}"$ square, including the seam allowances.

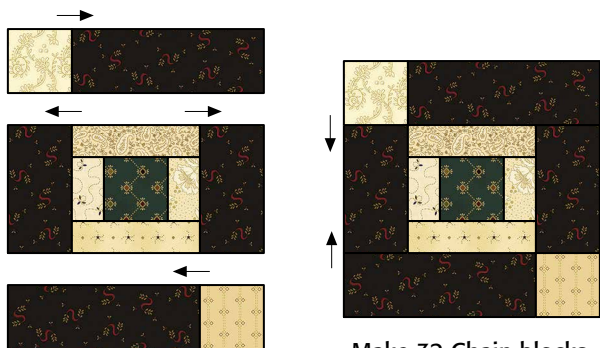


Make 32 Star blocks,
 $8\frac{1}{2}" \times 8\frac{1}{2}"$.

- 5 Repeat steps 1–4 to piece a total of 32 Star blocks. Reserve the remaining pieced block center units for the Chain blocks.

PIECING THE CHAIN BLOCKS

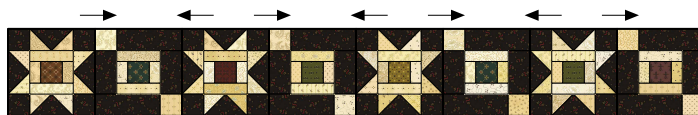
Using the reserved cream $2\frac{1}{2}"$ squares and choosing the prints randomly, lay out two cream $2\frac{1}{2}"$ squares, one reserved pieced block center unit, two black $2\frac{1}{2}" \times 4\frac{1}{2}"$ rectangles, and two $2\frac{1}{2}" \times 6\frac{1}{2}"$ black rectangles in three horizontal rows as shown. Join the pieces in each row. Press. Join the rows. Press. Repeat for a total of 32 pieced Chain blocks measuring $8\frac{1}{2}"$ square, including the seam allowances.



Make 32 Chain blocks,
 $8\frac{1}{2}" \times 8\frac{1}{2}"$.

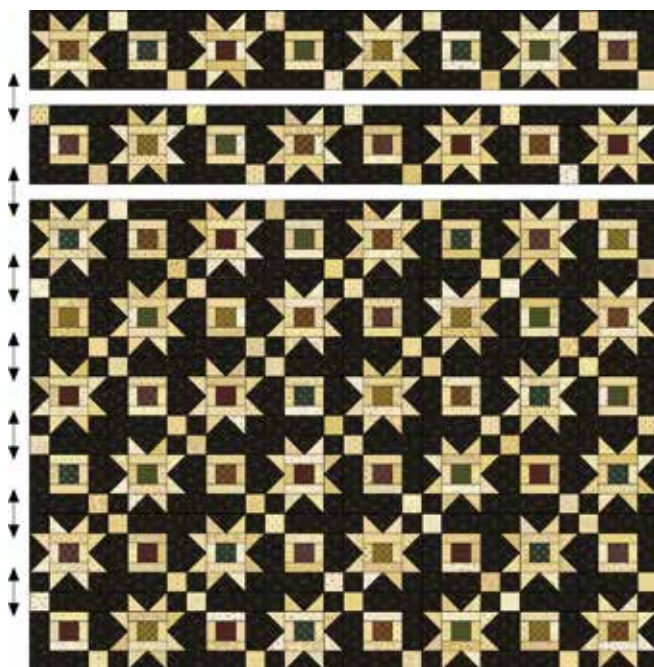
PIECING THE QUILT TOP

- 1 Lay out four Star blocks and four Chain blocks in alternating positions as shown. Join the blocks. Press. Repeat for a total of eight pieced block rows measuring $8\frac{1}{2}" \times 64\frac{1}{2}"$, including the seam allowances.



Make 8 block rows,
 $8\frac{1}{2}" \times 64\frac{1}{2}"$.

- 2 Lay out the block rows, turning the direction of every other row as shown to form the quilt design. Join the rows. Press.



COMPLETING THE QUILT

Layer and baste the quilt top, batting, and backing. Quilt the layers. Join the black binding strips to make one length, and use it to bind the quilt.

Every effort has been made to ensure that all projects are error free. All the information is presented in good faith, however no warranty can be given nor results guaranteed as we have no control over the execution of instructions. Therefore, we assume no responsibility for the use of this information or damages that may occur as a result. When errors are brought to our attention, we make every effort to correct and post a revision as soon as possible. Please make sure to check www.henryglassfabrics.com for pattern updates prior to starting the project. We also recommend that you test the project prior to cutting for kits. Finally, all free projects are intended to remain free to you and are not for resale or other forms of distribution.



Henry Glass & Co., Inc.

©2019 Kim Diehl

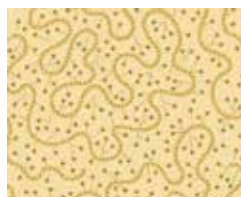
Butter Churn Basics Fabrics in the Collection



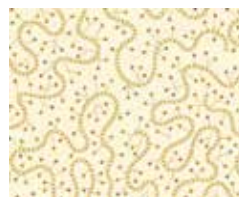
1442-33



1442-44



1443-33



1443-44



1444-33



1444-44



1445-33



1445-44



6284-33



6284-44



6285-33



6285-44



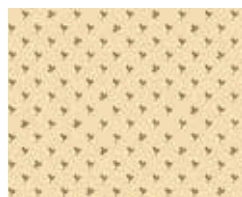
6286-33



6286-44



6287-33



6287-44



6288-33



6288-44



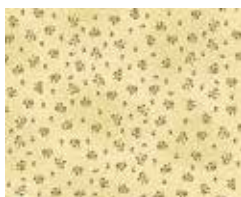
6289-33



6289-44



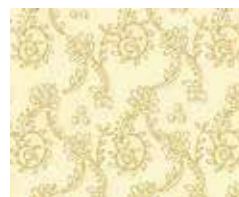
6555-33



6555-44



6556-33



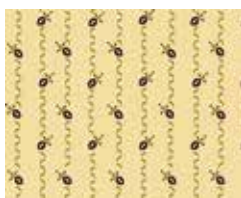
6556-44



6557-33



6557-44



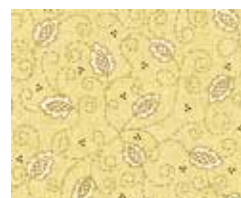
6558-33



6558-44



6559-33



6559-44



6560-33



6560-44