

Sage & Sea Glass

Star Baskets Quilt

by Kim Diehl



Finished Quilt Size: 72½" x 72½"
A Free Project Sheet from

 Henry Glass & Co., Inc.



49 West 37th Street, New York, NY 10018
tel: 212-686-5194 • fax: 212-532-3525
Toll-free: 800-294-9495
www.henryglassfabrics.com

facebook

Sage & Sea Glass

Star Baskets Quilt

Finished Quilt Size: 72½" x 72½"

MATERIALS

Yardages are based on a 42" width of useable fabric after prewashing and removing selvages.

1⅞ yards of cream mandala print for appliqué foundation and patchwork (1536-44)

1 yard each of two cream prints for patchwork (1539-44; 1549-44)

1⅝ yards of blue mandala print for patchwork, appliqués, and binding (1536-11)

1 yard of green dotted hexies print for patchwork and appliqués (1544-66)

⅔ yard each of eight blue prints for patchwork and appliqués (1537-11; 1538-11; 1541-11; 1543-11; 1544-11; 1545-11; 1546-11; 1548-11)

⅔ yard each of seven green prints for patchwork and appliqués (1536-66; 1537-66; 1539-66; 1540-66; 1541-66; 1542-66; 1547-66)

4⅔ yards of backing print (Kim suggests the green triangle vines print, 1537-66)

79" x 79" square of batting

Bias bar to make ⅜"-wide stem

Liquid glue for fabric, water-soluble and acid-free

Freezer paper to make vine guide (optional)

Standard sewing and quiltmaking supplies

Supplies for your favorite appliqué method

CUTTING NOTES

For greater ease in stitching and appliquéing this project, cutting requirements are divided into five sections — Blue Basket Star and Blue Basket Pomegranate blocks, Green Basket Star and Green Basket Pomegranate blocks, hourglass units, border patchwork/binding, and appliqués. As you cut the pieces specified for each section, please keep them organized and grouped together. As you work through each section and complete the cutting for the prints noted, reserve the remainder of each one for the sections that follow.

CUTTING for the Blue Basket Star and Blue Basket Pomegranate Blocks



Cut all pieces across the width of the fabric in the order given unless otherwise noted. For easy reference, a swatch page including sku numbers and print descriptions is provided at the end of this handout.

From the cream serpentine swirls print, cut:

7 strips, 2½" x 42"; crosscut into 43 rectangles, 2½" x 4½", and 26 squares, 2½" x 2½"

1 strip, 2⅞" x 42"; crosscut into 13 squares, 2⅞" x 2⅞". Cut each square in half diagonally *once* to yield 2 triangles (total of 26)

1 strip, 4½" x 42"; crosscut into 2 rectangles, 4½" x 8½"

5 strips, 1½" x 42"; crosscut into 30 rectangles, 1½" x 6½"

From all blue prints (9 total), cut a combined total of:

75 squares, 3¼" x 3¼"; cut each print in half diagonally *twice* to yield 4 triangles (combined total of 300)

60 squares, 2½" x 2½"

From the green dotted hexies print, cut:

2 strips, 2½" x 42"; crosscut into 13 rectangles, 2½" x 4½"

From all green prints (8 total), cut a combined total of:
13 squares, 2⅞" x 2⅞"; cut each square in half diagonally *once* to yield 2 triangles (combined total of 26)

26 squares, 2½" x 2½"

CUTTING for the Green Basket Star and Green Basket Pomegranate Blocks



From the cream leaf sprays print, cut:

7 strips, 2½" x 42"; crosscut into 43 rectangles, 2½" x 4½", and 26 squares, 2½" x 2½"

1 strip, 2⅞" x 42"; crosscut into 13 squares, 2⅞" x 2⅞". Cut each square in half diagonally *once* to yield 2 triangles (total of 26)

1 strip, 4½" x 42"; crosscut into 2 rectangles, 4½" x 8½"

5 strips, 1½" x 42"; crosscut into 30 rectangles, 1½" x 6½"

From all green prints (8 total), cut a combined total of:
75 squares, $3\frac{1}{4}$ " x $3\frac{1}{4}$ "; cut each print in half diagonally
twice to yield 4 triangles (combined total of 300)
60 squares, $2\frac{1}{2}$ " x $2\frac{1}{2}$ "

From the blue mandala print, cut:
2 strips, $2\frac{1}{2}$ " x 42"; crosscut into 13 rectangles, $2\frac{1}{2}$ " x $4\frac{1}{2}$ "

From all blue prints (9 total), cut a combined total of:
13 squares, $2\frac{7}{8}$ " x $2\frac{7}{8}$ "; cut each square in half diagonally
once to yield 2 triangles (combined total of 26)
26 squares, $2\frac{1}{2}$ " x $2\frac{1}{2}$ "

CUTTING for the Hourglass Units



From all blue prints (9 total), cut a combined total of:
90 squares, $3\frac{1}{4}$ " x $3\frac{1}{4}$ "; cut each square in half diagonally
twice to yield 4 triangles (combined total of 360)

From all green prints (8 total), cut a combined total of:
90 squares, $3\frac{1}{4}$ " x $3\frac{1}{4}$ "; cut each square in half diagonally
twice to yield 4 triangles (combined total of 360)

CUTTING for the Border Patchwork, Vertical Appliqué Row Foundation, and Binding



From the cream mandala print, cut:
10 strips, $4\frac{1}{2}$ " x 42"; crosscut 7 of the strips into 60 squares,
 $4\frac{1}{2}$ " x $4\frac{1}{2}$ ". Reserve the remaining strips for the vertical
quilt center appliqué row foundations.
5 strips, $2\frac{1}{2}$ " x 42"; crosscut into 40 rectangles, $2\frac{1}{2}$ " x $4\frac{1}{2}$ "

From the blue mandala print, cut:
8 binding strips, $2\frac{1}{2}$ " x 42"
2 strips, $2\frac{1}{2}$ " x 42"; crosscut into 10 rectangles, $2\frac{1}{2}$ " x $4\frac{1}{2}$ "

From the green dotted hexies print, cut:
2 strips, $2\frac{1}{2}$ " x 42"; crosscut into 10 rectangles, $2\frac{1}{2}$ " x $4\frac{1}{2}$ "

From all assorted blue and green prints (17 total), cut a combined total of:

40 assorted blue squares, $2\frac{1}{2}$ " x $2\frac{1}{2}$ " (star points)
40 assorted green squares, $2\frac{1}{2}$ " x $2\frac{1}{2}$ " (star points)
240 rectangles, $1\frac{1}{2}$ " x $6\frac{1}{2}$ " (piano key units)
4 rectangles, $1\frac{1}{2}$ " x $6\frac{1}{2}$ " (corner Braided blocks)
8 rectangles, $1\frac{1}{2}$ " x $5\frac{1}{2}$ " (corner Braided blocks)
8 rectangles, $1\frac{1}{2}$ " x $4\frac{1}{2}$ " (corner Braided blocks)
8 rectangles, $1\frac{1}{2}$ " x $3\frac{1}{2}$ " (corner Braided blocks)
8 rectangles, $1\frac{1}{2}$ " x $2\frac{1}{2}$ " (corner Braided blocks)
8 squares, $1\frac{1}{2}$ " x $1\frac{1}{2}$ " (corner Braided blocks)

CUTTING and PREPARING the Appliqués

Appliqué pattern pieces are provided on page 10. Please use your favorite method to cut and prepare the pieces noted below. Cutting entries reflect the colors shown in the quilt featured on the cover, or you can create your own color combinations — the choice is yours! In-depth directions for Kim's invisible machine appliqué method can be found in any of her "Simple" series of books containing appliqué projects.

From the blue mandala print, cut enough $1\frac{1}{4}$ "-wide bias strips to make a 210" length when joined together end to end.

From all blue and green prints (17 total), cut a combined total of:

- 14 assorted blue and 14 assorted green pomegranates (combined total of 28)
- 14 assorted blue and 14 assorted green pomegranate centers (combined total of 28), choosing colors to compliment the pomegranates
- 4 pairs of sawtooth leaves (with each pair consisting of 1 leaf and 1 mirror-image leaf); cut 2 pairs from 2 green prints and 2 pairs from 2 blue prints
- 4 pairs of sawtooth leaf centers (with each pair consisting of 1 leaf and 1 mirror-image leaf); cut 2 pairs from 2 green prints and 2 pairs from 2 blue prints, choosing colors to compliment the sawtooth leaves.
- 4 pairs of small leaves for the Pomegranate Basket blocks, with 2 pairs cut from 2 blue prints and 2 pairs cut from 2 green prints
- 24 large leaves in a random mix of colors
- 24 medium leaves in a random mix of colors
- 48 small leaves in a random mix of colors

PIECING the Blue Basket Star and Blue Basket Pomegranate Blocks

Sew all pieces with right sides together and a $\frac{1}{4}$ " seam allowance unless otherwise noted. Press the seam allowances as indicated by the arrows or otherwise directed.

- 1 Select one complete set of all pieces cut and organized for the Blue Basket Star and Blue Basket Pomegranate blocks.
- 2 Use a pencil and an acrylic ruler to draw a diagonal sewing line on the wrong side of each of the 26 assorted green print $2\frac{1}{2}$ " squares. Layer a prepared green $2\frac{1}{2}$ " square onto one end of a cream serpentine swirls $2\frac{1}{2}$ " x $4\frac{1}{2}$ " rectangle. Stitch the pair together along the drawn diagonal line. Fold the resulting inner green triangle open, aligning the corner with the corner of the cream rectangle. Press. Trim away the layers beneath

the top green triangle, leaving a $\frac{1}{4}$ " seam allowance. In the same manner, add a mirror-image triangle point to the remaining end of the cream rectangle. Repeat for a total of 13 pieced green flying geese star point units measuring $2\frac{1}{2}$ " x $4\frac{1}{2}$ ", including the seam allowances.



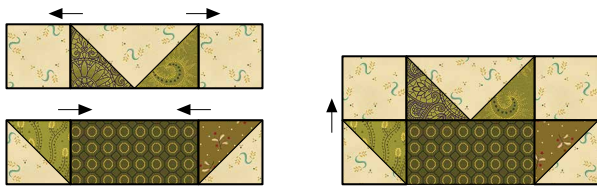
Make 13 green units,
 $2\frac{1}{2}$ " x $4\frac{1}{2}$ ".

- 3 Join a green and a cream serpentine swirls $2\frac{7}{8}$ " triangle along the long diagonal edges. Press. Trim away the dog-ear points. Repeat for a total of 26 pieced green half-square-triangle units measuring $2\frac{1}{2}$ " square, including the seam allowances.



Make 26 green units,
 $2\frac{1}{2}$ " x $2\frac{1}{2}$ ".

- 4 Lay out one green star point unit from step 2, two cream serpentine swirls $2\frac{1}{2}$ " squares, two green half square triangle units, and one green dotted hexies $2\frac{1}{2}$ " x $4\frac{1}{2}$ " rectangle in two horizontal rows as shown. Join the pieces in each row. Press. Join the rows. Press. Repeat for a total of 13 pieced green half-star units measuring $4\frac{1}{2}$ " x $8\frac{1}{2}$ ", including the seam allowances.



Make 13 green units,
 $4\frac{1}{2}$ " x $8\frac{1}{2}$ ".

- 5 Using 30 cream serpentine swirls $2\frac{1}{2}$ " x $4\frac{1}{2}$ " rectangles and 60 assorted blue $2\frac{1}{2}$ " squares, repeat step 2 to make 30 pieced blue flying geese star point units measuring $2\frac{1}{2}$ " x $4\frac{1}{2}$ ", including the seam allowances.



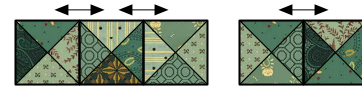
Make 30 blue units,
 $2\frac{1}{2}$ " x $4\frac{1}{2}$ ".

- 6 Choosing the prints randomly, choose four blue $3\frac{1}{4}$ " triangles, laying them out in two diagonal rows of two triangles as shown. Join the triangles in each diagonal row. Press. Trim away the dog-ear points. Join the rows. Press. Trim away the dog-ear points. Repeat for a total of 75 pieced blue hourglass units measuring $2\frac{1}{2}$ " square, including the seam allowances.



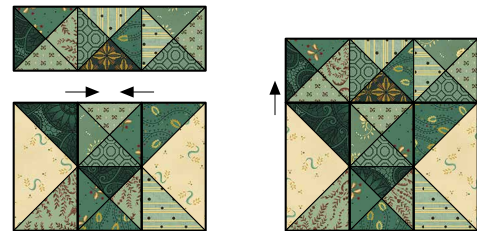
Make 75 blue units,
 $2\frac{1}{2}$ " x $2\frac{1}{2}$ ".

- 7 Lay out and join three blue hourglass units as shown. Press. Repeat for a total of 15 pieced blue triple hourglass units measuring $2\frac{1}{2}$ " x $6\frac{1}{2}$ ", including the seam allowances. In the same manner, stitch 15 blue double hourglass units measuring $2\frac{1}{2}$ " x $4\frac{1}{2}$ ", including the seam allowances.



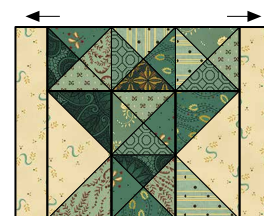
Make 15 blue triple units, $2\frac{1}{2}$ " x $6\frac{1}{2}$ ",
and 15 blue double units, $2\frac{1}{2}$ " x $4\frac{1}{2}$ ".

- 8 Lay out one blue triple hourglass unit, one blue double hourglass unit, and two blue star point units from step 5 in two horizontal rows as shown. Join the pieces in the bottom row. Press. Join the rows. Press. Repeat for a total of 15 pieced basket base units measuring $6\frac{1}{2}$ " square, including the seam allowances.



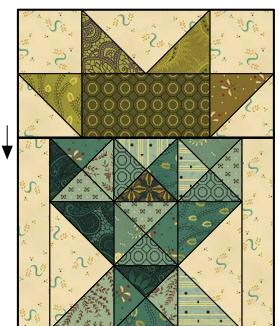
Make 15 units,
 $6\frac{1}{2}$ " x $6\frac{1}{2}$ ".

- 9 Join a cream serpentine swirls $1\frac{1}{2}$ " x $6\frac{1}{2}$ " rectangle to the right and left side of a basket base unit. Press. Repeat for a total of 15 pieced blue basket base units measuring $6\frac{1}{2}$ " x $8\frac{1}{2}$ ", including the seam allowances.



Make 15 basket base units,
 $6\frac{1}{2}$ " x $8\frac{1}{2}$ ".

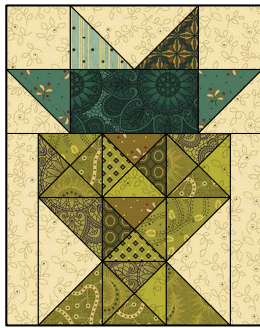
- 10 Join a green half-star unit from step 4 to a blue basket base unit. Press. Repeat for a total of 13 pieced Blue Basket Star blocks measuring $8\frac{1}{2}$ " x $10\frac{1}{2}$ ", including the seam allowances. Reserve the remaining two blue basket base units and the two unused cream serpentine swirl $4\frac{1}{2}$ " x $8\frac{1}{2}$ " rectangles for later use in completing the Pomegranate Basket blocks.



Make 13 Blue Basket Star blocks,
 $8\frac{1}{2}$ " x $10\frac{1}{2}$ ".

PIECING *the Green Basket Star and Green Basket Pomegranate Blocks*

Using one complete set of all pieces cut and organized for the Green Basket Star and Green Basket Pomegranate blocks, repeat steps 1–10 of “Blue Basket Star and Blue Basket Pomegranate Blocks” on page 4 to piece 13 Green Basket Star blocks. As with the blue blocks previously pieced, you’ll have two remaining green basket base units and two cream leaf sprays $4\frac{1}{2}'' \times 8\frac{1}{2}''$ rectangles for later use.



Make 13 Green Basket Star blocks,
 $8\frac{1}{2}'' \times 10\frac{1}{2}''$.

PIECING *the Blue and Green Hourglass Units and Hourglass Sashing Strips*

- 1 Select a complete set of pieces cut and organized for the hourglass sashing units.
- 2 Choose two assorted blue and two assorted green $3\frac{1}{4}''$ triangles. Lay the triangles out in two diagonal rows as shown. Join the triangles in each diagonal row. Press. Trim away the dog-ear points. Join the rows. Press. Trim away the dog-ear points. Repeat for a total of 180 pieced blue and green hourglass units measuring $2\frac{1}{2}''$ square, including the seam allowances.



Make 180
blue-and-green units,
 $2\frac{1}{2}'' \times 2\frac{1}{2}''$.

- 3 Referring to the pictured quilt on the handout cover, lay out 30 blue and green hourglass units end to end, rotating every other unit a quarter turn so that the blue and green prints alternate. Join the units. Press the seam allowances open. Repeat for a total of six pieced hourglass sashing strips measuring $2\frac{1}{2}'' \times 60\frac{1}{2}''$, including the seam allowances.

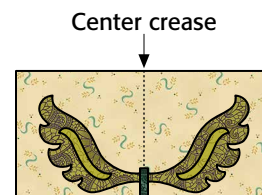
PIECING *and PREPARING the Vines and Stems*

- 1 Join the $1\frac{1}{4}''$ -wide blue mandala bias strips end to end to make one length, approximately 310" long. Press the seam allowances to one side, all in the same direction.
- 2 With *wrong* sides together (you want to be looking at the pretty side of the print), use a *scant* $\frac{1}{4}''$ seam allowance to join the strip along the long edges to form a tube. Slide the bias bar through the tube, in the same direction the seam allowances are directed, to press it flat; ensure the seam allowances are centered on the tube as you work, so they'll be hidden from the front of the finished vines and stems. After the bias bar has been removed, apply small dots of liquid fabric glue at approximately $\frac{1}{2}''$ intervals underneath the pressed seam allowances; use a hot, dry iron to work along the vine and heat set the glue-basted seam allowances in place.



APPLIQUÉING *and COMPLETING the Pomegranate Blocks*

- 1 Choose a reserved cream serpentine swirls $4\frac{1}{2}'' \times 8\frac{1}{2}''$ rectangle; fold the rectangle in half crosswise, right sides together, and use a hot, dry iron to lightly press the center crease.
- 2 From the prepared length of blue vine, cut a $1\frac{3}{4}''$ -long stem piece. Apply dots of liquid fabric glue along the center of the stem seam allowance. Press the prepared stem onto the bottom edge of the prepared cream $4\frac{1}{2}'' \times 8\frac{1}{2}''$ rectangle, centering it over the crease and ensuring the bottom edge is flush with the rectangle edge. From the back of the rectangle, use a hot, dry iron to heat set the stem in place. Position a sawtooth leaf and a mirror-image sawtooth leaf cut from a single green print onto the cream rectangle, tucking the raw ends underneath the glue basted stem; pin or baste in place. Use your favorite appliqué method to stitch the stem and leaves in place.

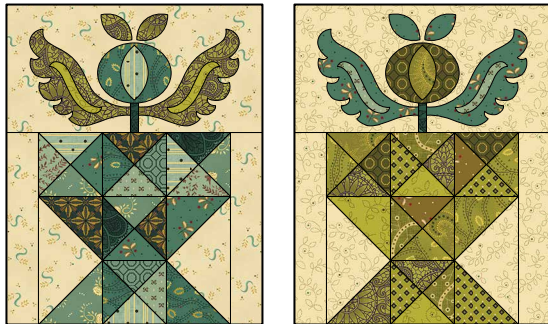


- 3 Work from the bottom layer to the top to lay out, baste, and stitch a blue pomegranate and pomegranate center, green sawtooth leaf centers, and two small green leaves to the appliqué unit.
- 4 Repeat steps 1–3 to complete two blue pomegranate units and two green pomegranate units measuring $4\frac{1}{2}'' \times 8\frac{1}{2}''$, including the seam allowances.



Appliqué 2 blue pomegranate units and 2 green pomegranate units, $4\frac{1}{2}'' \times 8\frac{1}{2}''$.

- 5 Join a completed blue pomegranate unit to a blue basket base. Press. Repeat for a total of two completed Pomegranate Basket blocks in each colorway.



Make 2 Pomegranate Basket blocks in each colorway, $8\frac{1}{2}'' \times 10\frac{1}{2}''$.

PIECING *the Vertical Block Rows*

- 1 Referring to the pictured quilt on the handout cover, lay out three Blue Basket Star blocks, two Green Basket Star blocks, and one Blue Basket Pomegranate block end to end to form the far-left quilt center basket row. Join the blocks. Press the seam allowances open. The pieced vertical block row should measure $8\frac{1}{2}'' \times 60\frac{1}{2}''$, including the seam allowances.
- 2 Repeat step 1, again using the pictured quilt as a guide, to work from left to right and piece a total of five vertical block rows.

APPLIQUÉING *the Vertical Quilt Center Rows*

- 1 Use a pencil to trace the curved edge of the vine guide onto one end of a sheet of freezer paper; use the pencil with an acrylic ruler to complete the vine guide and add the straight lines. Fold the freezer paper in half, waxy sides together, and fuse the layers with a hot, dry iron. Use scissors to cut out the vine guide, exactly along the drawn lines.

- 2 Join the three cream mandala $4\frac{1}{2}'' \times 42''$ strips together end to end. Press the seam allowances open. From this pieced strip, cut two vertical appliqué row foundation units measuring $4\frac{1}{2}'' \times 60\frac{1}{2}''$, including the seam allowances.
- 3 Referring to the left-hand vertical appliqué row in the pictured quilt, position the prepared vine guide onto the top end of a cream strip, aligning the straight edge with the vertical raw edge of the strip. Use a water-soluble marker to trace along the curve of the guide and transfer the side of the cream strip, and continue transferring the shape of the curve. Continue working along the length of the strip in this manner to complete the vine shape. In the same manner, use the guide and the remaining cream strip to create a mirror-image vine shape.

- 4 From the prepared length of vine, cut 24 stem pieces, $1\frac{3}{4}''$ in length.
- 5 Referring to the illustration, position two pomegranates onto the prepared left-hand cream appliqué strip; pin or baste in place. Dot the seam allowances of two stem pieces with liquid glue and press them onto the cream strip, curving them out from the drawn vine shape to each pomegranate; ensure the pomegranate edge will overlap the raw end of the stem by approximately $\frac{1}{4}''$, adjusting the pomegranate position if needed. Heat set the stems from the back of the unit. Continue working down the length of the appliqué unit to complete the layout of the stems and pomegranates.



- 6 Dot the vertical serpentine vine shape with liquid fabric glue at approximately $\frac{1}{2}''$ intervals, and add the blue vine on top, curving it along the drawn line to the bottom of the cream strip; cut away the excess vine length, flush with the edge of the cream strip. Heat set the vine.

- 7 Between each pair of pomegranates, and choosing the colors randomly, lay out and baste one large leaf, one medium leaf, and two small leaves. Continue working down the length of the cream strip to complete the placement of the leaves. Appliqué all elements of the appliqué design that have been positioned to this point.



- 8 Last, lay out, baste, and stitch a pomegranate center onto each pomegranate.
- 9 Repeat steps 3–8 to appliqué the remaining right-hand vertical appliqué row.

PIECING *the Quilt Center*

Using the pictured quilt as a guide, lay out the five pieced block rows, the six pieced hourglass rows, and the two appliqué rows to form the quilt center. Join the rows. Press the seam allowances toward the hourglass rows. The pieced quilt center should now measure 60½" square, including the seam allowances.

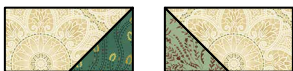
PIECING *the Border Patchwork*

- 1 Select the complete set of patchwork cut for the border units. Draw a diagonal sewing line on the wrong side of each green and blue 2½" square as previously instructed, keeping the prepared green and blue squares grouped together by color.
- 2 Referring to step 2 of "Blue Basket Star and Blue Basket Pomegranate Blocks" on page 4, use two prepared assorted blue 2½" squares to stitch two triangle points onto adjacent corners of a cream mandala 4½" square. Repeat for a total of 10 pieced blue double star point units measuring 4½" square, including the seam allowances.



Make 10 blue units,
4½" x 4½".

- 3 Again referring to step 2 of "Blue Basket Star and Blue Basket Pomegranate Blocks" on page 4, use two prepared blue 2½" squares and two cream mandala 2½" x 4½" rectangles to stitch a single star point unit and a mirror-image single star point unit, each measuring 2½" x 4½", including the seam allowances. Repeat for a total of 10 blue pieced units each.



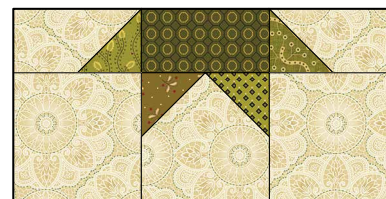
Make 10 blue units each,
2½" x 4½".

- 4 Lay out one blue double star point unit from step 2, one blue single star point unit, one blue mirror-image single star point unit, one blue mandala 2½" x 4½" rectangle, and two cream mandala 4½" squares in two horizontal rows as shown. Join the pieces in each row. Press. Join the rows. Press. Repeat for a total of 10 pieced blue half-star border units measuring 6½" x 12½", including the seam allowances.



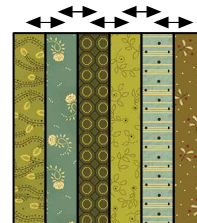
Make 10 blue units,
6½" x 12½".

- 5 Repeat steps 2–4 to piece 10 green half-star border units measuring 6½" x 12½", including the seam allowances.



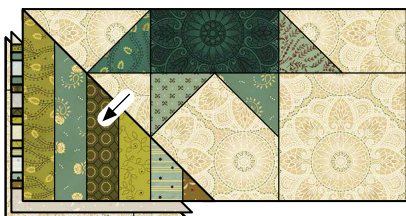
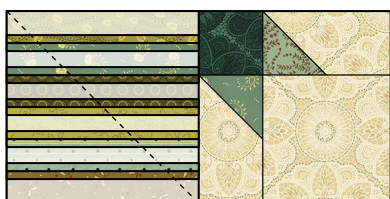
Make 10 green units,
6½" x 12½".

- 6 Choosing the prints randomly, join six blue and green 1½" x 6½" rectangles along the long edges. Press. Repeat for a total of 40 pieced piano key units measuring 6½" square, including the seam allowances.



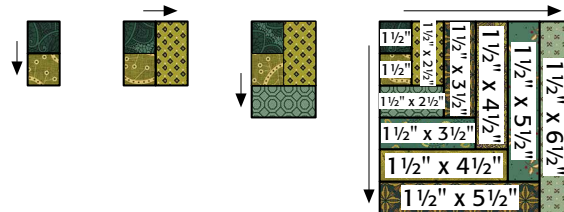
Make 40 units,
6½" x 6½".

- 7 Use a pencil and an acrylic ruler to draw two sewing lines (to form an X) from corner to corner on the wrong side of each piano key unit. Drawing two lines will give you the versatility to position the prepared piano key units in any direction needed when stitching the steps that follow.
- 8 Layer a prepared piano key unit onto a pieced blue half-star border unit as shown. Stitch the piano key unit along the needed drawn line. Fold the resulting inner piano key triangle open, aligning the corner with the corner of the star unit. Press. Trim away the layers beneath the top piano key triangle. In the same manner, add a piano key triangle to the remaining end of the unit. Repeat for a total of 10 pieced blue border units and 10 pieced green border units measuring $6\frac{1}{2}$ " x $12\frac{1}{2}$ ", including the seam allowances.



Make 10 blue units and 10 green units,
 $6\frac{1}{2}$ " x $12\frac{1}{2}$ ".

- 9 Using the pieces cut for the braided corner units and choosing the colors randomly, join two assorted print $1\frac{1}{2}$ " squares. Press. Next, join a $1\frac{1}{2}$ " x $2\frac{1}{2}$ " rectangle to the patchwork unit. Press. Continue stitching and pressing rectangles to the unit as shown to sew a braided corner unit measuring $6\frac{1}{2}$ " square, including the seam allowances. Repeat to piece a total of four braided corner units.



Make 4 units,
 $6\frac{1}{2}$ " x $6\frac{1}{2}$ ".

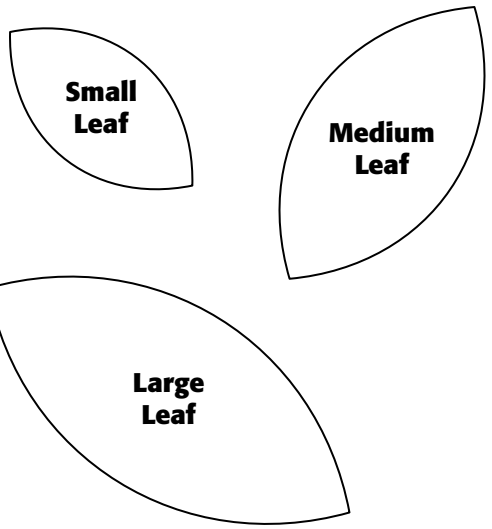
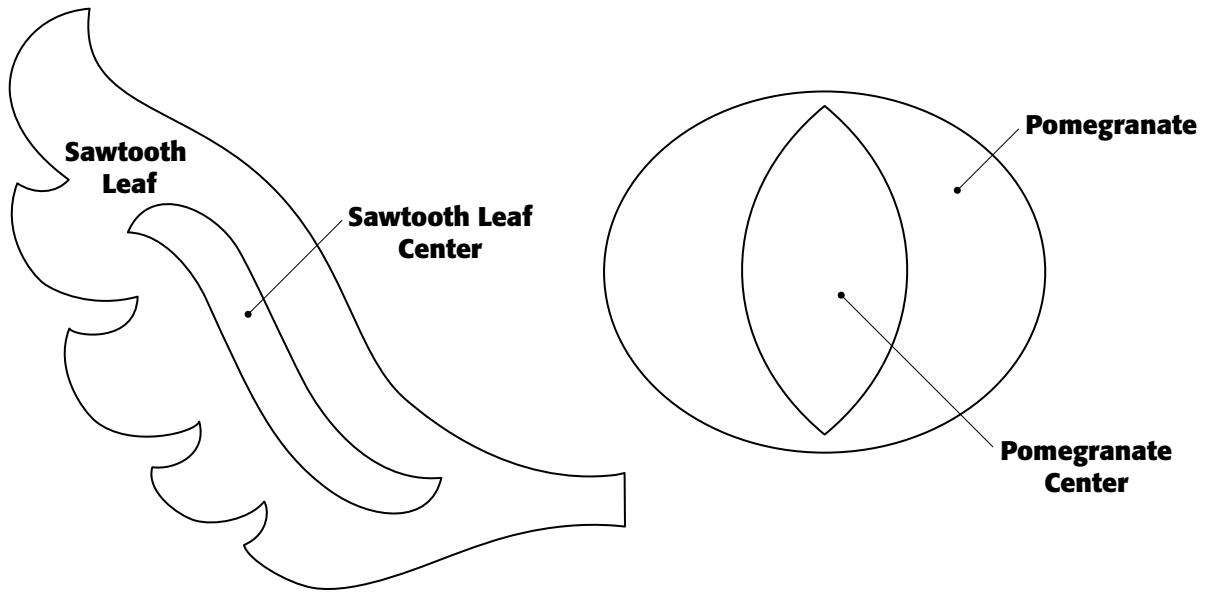
PIECING *and* ADDING *the* Borders

- 1 Using the pictured quilt as a guide, lay out three green half-star border units and two blue half-star border units in alternating positions. Join the units. Press the seam allowances open. Repeat for a total of two pieced side border rows measuring $6\frac{1}{2}$ " x $60\frac{1}{2}$ ", including the seam allowances. Join these rows to the right and left sides of the quilt center. Press the seam allowances away from the quilt center.
- 2 Again referring to the pictured quilt, lay out three blue half-star border units and two green half-star border units in alternating positions. Join the units. Press the seam allowances open. Repeat for a total of two pieced top/bottom border rows measuring $6\frac{1}{2}$ " x $60\frac{1}{2}$ ", including the seam allowances.
- 3 Join a braided unit to each end of the step 2 border rows. Press the seam allowances open. Join these pieced rows to the remaining sides of the quilt center. Press the seam allowances away from the quilt center.

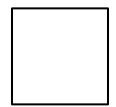
COMPLETING *the* Quilt

Layer and baste the quilt top, batting, and backing. Quilt the layers. Join the blue mandala binding strips to make one length, and use it to bind the quilt.

Every effort has been made to ensure that all projects are error free. All the information is presented in good faith, however no warranty can be given nor results guaranteed as we have no control over the execution of instructions. Therefore, we assume no responsibility for the use of this information or damages that may occur as a result. When errors are brought to our attention, we make every effort to correct and post a revision as soon as possible. Please make sure to check www.henryglassfabrics.com for pattern updates prior to starting the project. We also recommend that you test the project prior to cutting for kits. Finally, all free projects are intended to remain free to you and are not for resale or other forms of distribution.



Patterns do not include seam allowances.



Turn off scaling when printing this page.
The box at left should measure 1/2" x 1/2".

Vine Guide

1/4" seam allowance



Turn off scaling when printing this page.
The box at left should measure 1/2" x 1/2".

Sage & Sea Glass Fabrics in the Collection



1536-11
Mandala, Blue



1536-44
Mandala, Cream



1536-66
Mandala, Green



1537-11
Triangle Vines, Blue



1537-66
Triangle Vines, Green



1538-11
Bitty Bows, Blue



1539-44
Leaf Sprays, Cream



1539-66
Leaf Sprays, Green



1540-66
Meandering Stipple, Green



1541-11
Sprigs and Stars, Blue



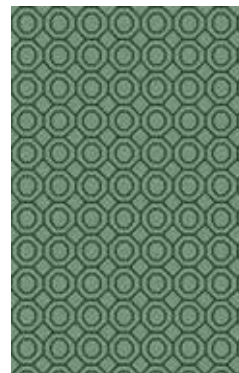
1541-66
Sprigs and Stars, Green



1542-66
Diamonds and Dots, Green



1543-11
Vintage Toile, Blue



1544-11
Dotted Hexies, Blue



1544-66
Dotted Hexies, Green



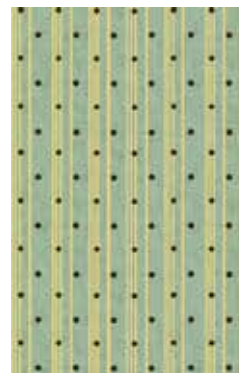
1545-11
Wheat Blossoms, Blue



1546-11
Tossed Cabbage Roses, Blue



1547-66
Starburst Paisley, Green



1548-11
Polka Dot Ticking Stripe, Blue



1549-44
Serpentine Swirls, Cream