

STAND TALL

Free Project Sheet
NOT FOR RESALE

by Janet Rae Nesbitt

ONE SISTER



Quilt designed by Denise Russell.



Quilt 2

Quilt size: 64" x 77.5"

Skill Level: Advanced Beginner

 **Henry Glass & Co., Inc.**



facebook

49 West 37th Street
New York, NY 10018

Tel: 212-686-5194 - Fax: 212-532-3525

Toll Free: 800-294-9495

www.henryglassfabrics.com

Please check our website for pattern updates
before starting this project.

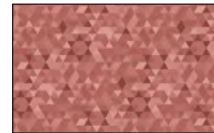
STAND TALL - Fabrics in the Collection



3024-33 Triangle
Texture - Yellow



3024-44 Triangle
Texture - Cream

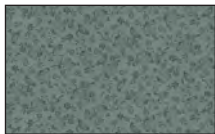


3024-83 Triangle
Texture - Lt. Red



3025-33 Bird
Stamp - Yellow

3031P-13 Sunflowers
Panel 24" - Gray



3025-77 Bird
Stamp - Blue



3025-98 Bird Stamp
Gray Taupe



3026-35 Textured
Tile - Gold



3026-38 Textured
Tile - Taupe



3026-44 Textured
Tile - White Wash



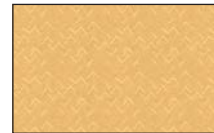
3027-33 X Texture
Lt. Yellow



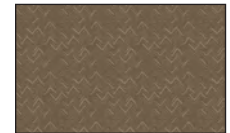
3027-38 X Texture
Taupe



3027-66 X Texture
Green



3028-33 Broken
Chevron - Yellow



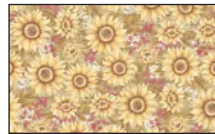
3028-38 Broken
Chevron - Brown



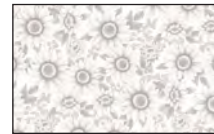
3028-66 Broken
Chevron - Green



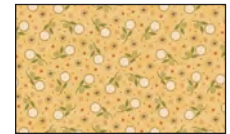
3029-13 Sunflower
Allover - Gray



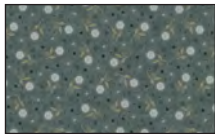
3029-33 Sunflower
Allover - Yellow



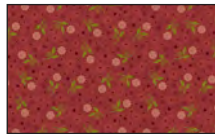
3029-44 Sunflower
Allover - White Wash



3030-33 Sunflower
Mini - Lt. Yellow



3030-77 Sunflower
Mini - Blue



3030-88 Sunflower
Mini - Red

Selected fabrics from the
Linen Closet III Collection
by Janet Rae Nesbitt



3070-30
White Wash



3072-34
Tan



3074-30
White Wash

STAND TALL - Quilt 2

Materials

Yardages and cutting instructions are based on 42" of usable fabric width.

1/4 yard 3027-66 X Texture - Green
1/4 yard 3030-88 Sunflower Mini - Red
1/3 yard 3070-30 Linen Closet - White Wash
2/3 yard 3026-35 Textured Tile - Gold
2/3 yard 3026-38 Textured Tile - Taupe
3/4 yard 3030-77 Sunflower Mini - Blue
7/8 yard 3072-34 Linen Closet - Tan
1 yard 3027-38 X Texture - Taupe
1-1/8 yards 3024-83 Triangle Texture - Lt. Red
1-1/8 yards 3025-77 Bird Stamp - Blue
2-3/4 yards 3074-30 Linen Closet - White Wash
4-7/8 yards 3029-44 Sunflower Allover - White Wash for backing

Cut Fabrics

Note: All strips are cut across the width of the fabric (WOF) from selvage to selvage unless otherwise indicated.

From each, cut:

3027-66 X Texture – Green

3030-88 Sunflower Mini – Red

*One 3-1/2" x WOF strip. Sub-cut ten 3-1/2" squares.

From 3070-30 Linen Closet - White Wash, cut:

*Four 2" x WOF strips. Sub-cut eighty 2" squares.

From each, cut:

3026-35 Textured Tile – Gold

3026-38 Textured Tile – Taupe

*Four 2" x WOF strips. Sub-cut eighty 2" squares.

*Four 3-1/2" x WOF strips. Sub-cut forty 3-1/2" squares.

From 3030-77 Sunflower Mini – Blue, cut:

*One 2" x WOF strip. Sub-cut twelve 2" squares.

*Seven 3" x WOF strips for border 4.

From 3072-34 Linen Closet – Tan, cut:

*Eight 3-1/2" x WOF strips. Sub-cut (160) 2" x 3-1/2" strips.

From 3027-38 X Texture – Taupe, cut:

*Seven 1-1/2" x WOF strips for border 2.

*Eight 2-1/2" x WOF strips for binding.

From each, cut:

3024-83 Triangle Texture - Lt. Red

3025-77 Bird Stamp – Blue

*Four 2" x WOF strips. Sub-cut eighty 2" squares.

*Two 2-3/8" x WOF strips. Sub-cut twenty 2-3/8" squares.

*Six 3-1/2" x WOF strips. Sub-cut (120) 2" x 3-1/2" strips.

From 3074-30 Linen Closet - White Wash, cut:

*Twenty-three 2" x WOF strips. Sub-cut (480) 2" squares.

*Two 12-1/2" x WOF strips. Sub-cut thirty-one 2" x 12-1/2" strips and forty 2-3/8" squares.

*Seven 1-1/4" x WOF strips for border 3.

*Seven 2" x WOF strips for border 1.

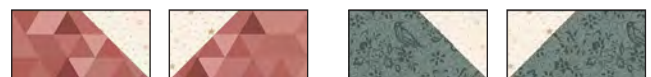
Assemble Blocks

Note: Measurements include 1/4" seam allowances. Sew with right sides together unless otherwise stated. If no direction is specified, press the seam toward the darker fabric.

Draw a diagonal line from corner to corner on the wrong side of the (480) 2" 3074-30 Linen Closet - White Wash squares. They will be used in Steps 1, 2, and 4 and are referred to as 2" White Wash squares.

1. Group eighty 2" x 3-1/2" 3024-83 Triangle Texture - Lt. Red strips into two piles of forty strips each. With right sides together and noting stitching direction, layer one marked 2" White Wash square on the right side of a Lt. Red strip from Pile 1. Stitch on the diagonal line, cut 1/4" from the stitching line, and press open. Make forty W units. Next, stitch the White Wash square to the left side of the strips. Make forty X units.

Repeat this step with eighty more 2" White Wash squares and the 2" x 3-1/2" 3025-77 Bird Stamp – Blue strips. Make forty Wa and Xa units (*figure 1*).



W units X units Wa units Xa units

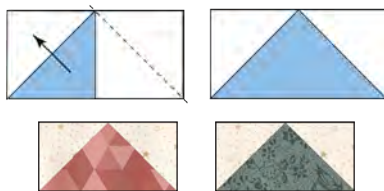
Figure 1 – Make (40) 2" x 3-1/2" strips of each type.

STAND TALL - Quilt 2

- Noting the line orientation and with right sides together, layer a marked 2" White Wash square on the left short end of a 2" x 3-1/2" 3024-83 Triangle Texture - Lt. Red strip and stitch on the drawn line. Trim 1/4" away from the seam line and press open. Similarly, stitch another White Wash square to the opposite end of the same Lt. Red strip. Repeat to make forty 2" x 3-1/2" flying-geese units.

Repeat this step with forty more 2" White Wash squares and the 2" x 3-1/2" 3025-77 Bird Stamp - Blue strips to make forty 2" x 3-1/2" flying-geese units.

Referring to the diagrams below for placement, match and sew twenty Step 1 units of each type to the bottom of the flying geese to make twenty 3-1/2" units of each type. Press the seams in one direction (*figure 2*).



Make 40 of each

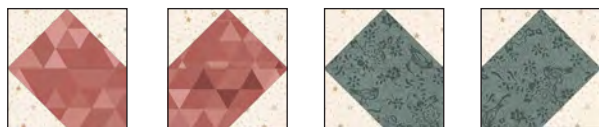


Figure 2 - Make (20) 3-1/2" units of each type.

- Draw a diagonal line from corner to corner on the wrong side of the 2-3/8" 3074-30 Linen Closet - White Wash squares. With right sides together, layer the marked White Wash squares atop the 2-3/8" 3024-83 Triangle Texture - Lt. Red squares. Stitch 1/4" from each side of the diagonal line, cut on the drawn line, press each unit open with seams toward the darker fabric, and trim dog ears. Make forty 2" half-square triangles (HST).

Repeat this step with the remaining 2-3/8" 3074-30 Linen Closet - White Wash squares and the 2-3/8" 3025-77 Bird Stamp - Blue

squares to make forty 2" HST (*figure 3*).

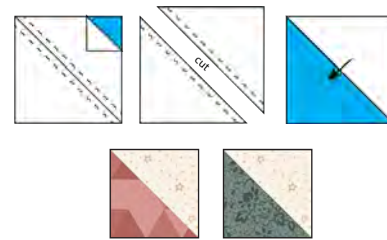


Figure 3 - Make (40) 2" units of each type.

- Group eighty 2" x 3-1/2" 3072-34 Linen Closet - Tan strips into two piles of forty strips each. Noting the stitching direction, sew a marked 2" White Wash square to the left side of a 2" x 3-1/2" Tan strip from Pile 1 and a 2" 3026-35 Textured Tile - Gold square to its right side. Cut 1/4" from the stitching line and press open. Repeat to make forty 2" x 3-1/2" Y units.

Repeat this step with the Tan strips in Pile 2, this time sewing the 2" White Wash squares to the right side and the 2" Gold squares to the left of the strips to make forty 2" x 3-1/2" Z units.

Next, make the Za and Ya units working with the remaining 2" x 3-1/2" 3072-34 Linen Closet - Tan strips, the marked 2" White Wash squares, and the 2" 3026-38 Textured Tile - Taupe squares to make forty units of each type.

Match units and sew them two by two, as shown below (*figure 4*).

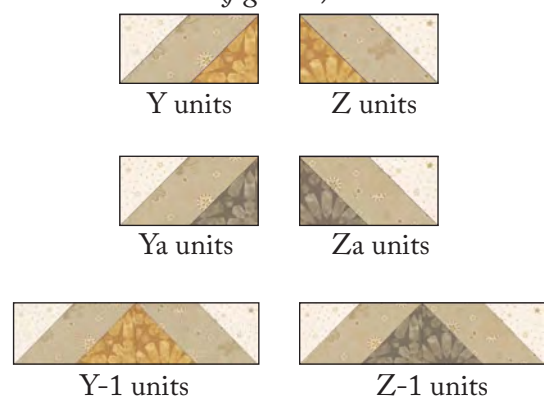


Figure 4 - Make (40) 2" x 6-1/2" units of each type.

STAND TALL - Quilt 2

- Noting fabric combination and orientation, sew the Step 4 HST to twenty Step 4 Y-1 units and twenty Z-1 units (*figure 5*). Press the seams toward the center.

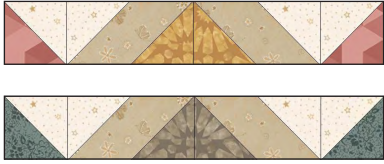


Figure 5 – Make (20) 2" x 9-1/2" strips of each type.

- Draw a diagonal line from corner to corner on the wrong side of the 2" 3024-83 Triangle Texture - Lt. Red squares. With right sides together, place one marked Lt. Red square on a corner of one 3-1/2" 3026-35 Textured Tile – Gold square and stitch on the drawn line. Trim seam allowance to 1/4" and press open. Repeat with the adjacent corner of the same square. Make forty 3-1/2" units.

Repeat this step with the 2" 3025-77 Bird Stamp – Blue squares and the 3-1/2" 3026-38 Textured Tile – Taupe squares to make forty 3-1/2" units (*figure 6*).

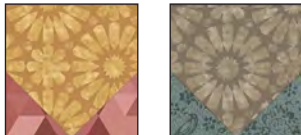


Figure 6 – Make (40) 3-1/2" units of each type.

- Draw a diagonal line from corner to corner on the wrong side of the 2" 3070-30 Linen Closet - White Wash squares. With right sides together, place one marked 3070-30 Linen Closet - White Wash square on a corner of one 3-1/2" 3027-66 X Texture – Green square and stitch on the drawn line. Repeat with the opposite corner of the same square. Trim seam allowances to 1/4" and press open. Repeat with the other corners of the square. Make ten 3-1/2" units.

Repeat this step with the remaining 2" 3070-30 Linen Closet - White Wash squares and the 3-1/2" 3030-88 Sunflower Mini – Red to make ten 3-1/2" units (*figure 7*).

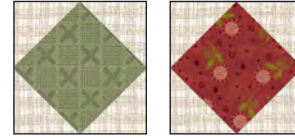


Figure 7 – Make (10) 3-1/2" units of each type.

- Matching fabrics and noting fabric orientation, sew a Step 6 unit to opposite sides of a Step 7 unit. Press the seams in one direction. Repeat to make ten center strips. Sew a Step 2 unit to opposite sides of the remaining Step 7 units to make twenty top/bottom strips. Sew a strip to the top and one to the bottom of the center strips to make ten 9-1/2" block centers (*figure 8*). Press the seams in one direction.

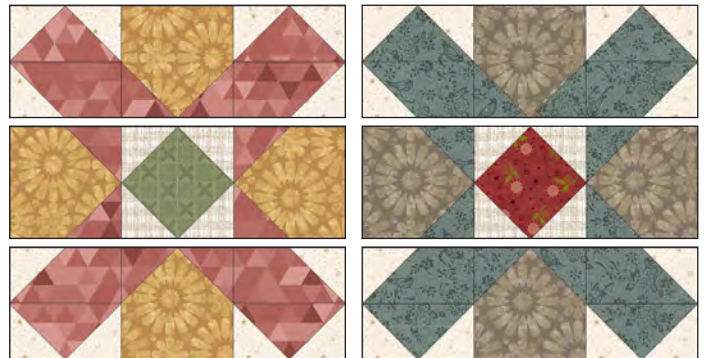


Figure 8 – Make (10) 9-1/2" block centers of each type.

- Sew a Step 5 unit to opposite sides of the Step 8 block centers (*figure 9*). Press the seams open.

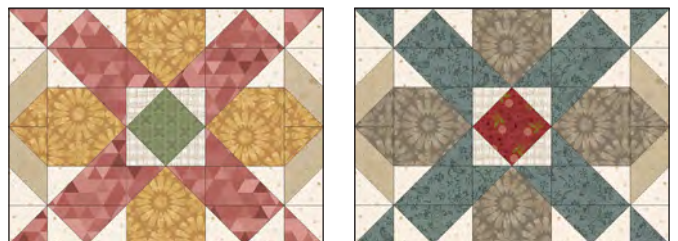


Figure 9

- Sew a Step 1 W unit to the left and an X unit to the right of the Step 4 Y-1 units. Then, sew

STAND TALL - Quilt 2

a Step 1 Wa unit to the left, and a Xa unit to the right of the Z-1 units to make the top/bottom rows. Matching fabric, sew a row to the top and one to the bottom of the Step 9 units to make ten 12-1/2" blocks of each type (*figure 10*). Press the seams away from the center.

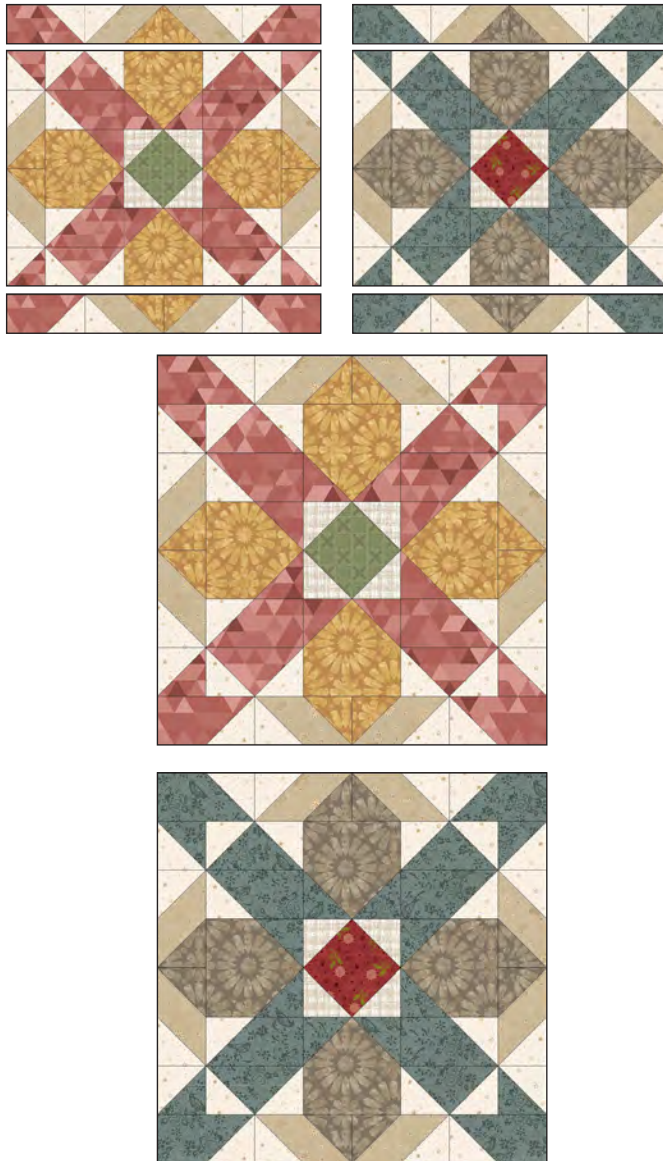


Figure 10 – Make (10) 12-1/2" blocks of each type.

Assemble Quilt Top

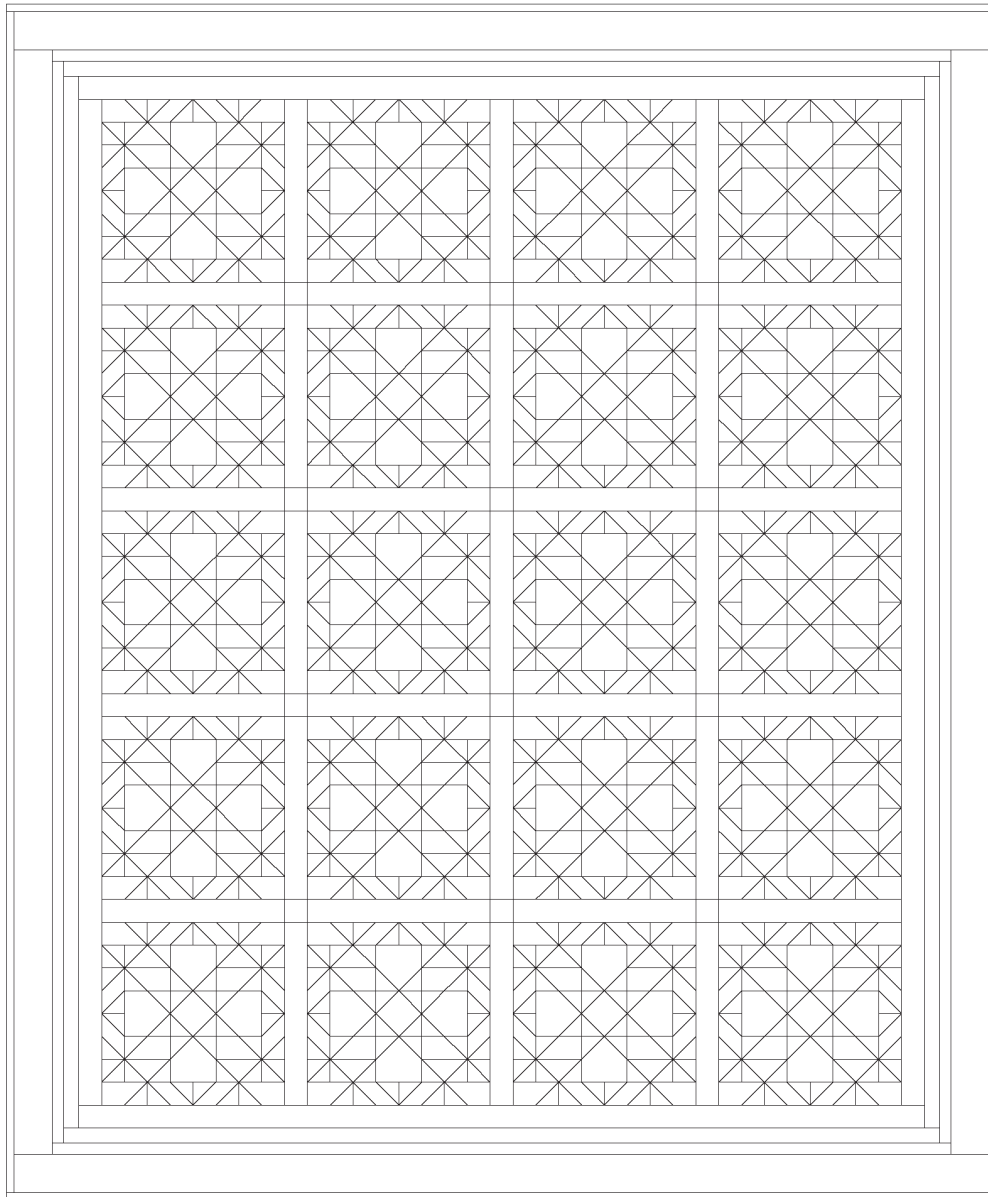
- Referring to the quilt photo for block placement, lay out four blocks and three 2" x 12-1/2" 3074-30 Linen Closet - White Wash sashing strips in five rows, and join the blocks and sashing strips together in each row. Press the seams toward the sashing.
- To make the horizontal sashing rows, sew together four 3074-30 Linen Closet - White Wash sashing strips and three 2" 3030-77 Sunflower Mini – Blue cornerstone squares. Repeat to make four sashing strips. Press the seams toward the sashing.
- Matching adjacent seams, sew block rows and horizontal sashing strips together. Press the seams in one direction.
- For border 1, sew seven 2" 3074-30 Linen Closet - White Wash border strips together end to end using diagonal seams. Measure the vertical length of the quilt top through the center and cut two border strips that length. Sew one strip to each side of the quilt top. Measure the width of the quilt top through the center. Cut two border strips that length and sew one to the top and one to the bottom. Press the seams toward the borders.
- Repeat Step 14 with the seven 1-1/2" 3027-38 X Texture – Taupe strips to make and add border 2.
- Repeat Step 14 with the seven 1-1/4" 3074-30 Linen Closet - White Wash strips to make and add border 3.
- Repeat Step 14 with the seven 3" 3030-77 Sunflower Mini – Blue strips to make and add border 4.

Finishing

- Create a quilt sandwich with the batting between the quilt top and the backing. Pin or baste layers together, mark the quilting design, and quilt by hand or machine. When quilting is complete, remove pins or basting, and trim batting and backing even with raw edges of the quilt top.
- Join the eight 2-1/2" 3027-38 X Texture – Taupe binding strips together end to end using a diagonal seam to make one long strip. With

STAND TALL - Quilt 2

wrong sides together, fold in half lengthwise and press. Sew binding to the edges of the quilt, mitering corners, and overlapping ends. Fold binding to the back of the quilt and stitch it in place by hand to finish.



Quilt Diagram

©2022 Henry Glass & Co. Inc.

Every effort has been made to ensure that all projects are error free. All the information is presented in good faith; however, no warranty can be given nor results guaranteed as we have no control over the execution of instructions. Therefore, we assume no responsibility for the use of this information or damages that may occur as a result. When errors are brought to our attention, we make every effort to correct and post a revision as soon as possible. Please make sure to check www.henryglassfabrics.com for pattern updates prior to starting the project. We also recommend that you test the project prior to cutting for kits. Finally, all free projects are intended to remain free to you and are not for resale.