

# Spring is in the Air

• A Free Project Sheet •  
• NOT FOR RESALE •

By Hannah West

Quilt Design by Heidi Pridemore



Quilt 1

Skill Level: Advanced Beginner



Henry Glass & Co., Inc.



facebook

Finished Quilt Size: 61" x 73"

49 West 37th Street, New York, NY 10018

tel: 212-686-5194 fax: 212-532-3525

Toll Free: 800-294-9495

[www.henryglassfabrics.net](http://www.henryglassfabrics.net)

Please check our website for pattern updates before starting this project.



# SPRING IS IN THE AIR Quilt 1

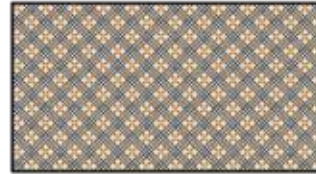
## Fabrics in the Collection



Novelty Toss  
Light Blue – 2783-17



Novelty Toss  
Yellow – 2783-33



Spring Bias Plaid  
Cream/Blue – 2784-37



Spring Bias Plaid  
Green – 2784-66



Spring Bias Plaid  
Red – 2784-88



Birds and Flowers  
Light Blue – 2785-17



Birds and Flowers  
Cream/Red – 2785-38



Feather Lattice  
Yellow – 2786-33



Feather Lattice  
Cream/Red – 2786-38



Feather Lattice  
Green – 2786-66



Rose Bud Toss  
Cream – 2787-33



Rose Bud Toss  
Carrot – 2787-35



Rose Bud Toss  
Green – 2787-66



Tiny Calico  
Cream – 2788-33



Tiny Calico  
Green – 2788-66



Tiny Calico  
Red – 2788-88



Novelty Border Stripe  
Cream – 2789-33



Spring Panel 36 inches x 44 inches  
Blue – 2790P-77

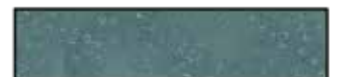
Select Fabric from  
Folio Basics



Off White  
7755-04



Brown Bag  
7755-30



Dusty Teal  
7755-72

# SPRING IS IN THE AIR Quilt 1

Page 3

## Materials

1 panel	Spring Panel 36 inches x 44 inches - Blue (A)	2790P-77
1 1/8 yards	Folio Basic - Dusty Teal (B)	7755-72*
1/3 yard	Folio Basic - Brown Bag (C)	7755-30
1/3 yard	Tiny Calico - Cream (D)	2788-33
3/8 yard	Novelty Toss - Light Blue (E)	2783-17
1/4 yard	Tiny Calico - Red (F)	2788-88
1/4 yard	Folio Basic - Off White (G)	7755-04
1/2 yard	Spring Bias Plaid - Red (H)	2784-88
2/3 yard	Rose Bud Toss - Green (I)	2787-66
2 1/4 yards	Novelty Border Stripe - Cream (J)	2789-33
4 yards	Novelty Toss - Yellow (Backing)	2783-33

\*Includes binding

## Cutting Instructions

Please note: All strips are cut across the width of fabric (WOF) from selvage to selvage edge unless otherwise noted.

### From the Spring Panel 36 inches x 44 inches - Blue (A):

- Fussy cut (6) 9 1/2" x 10 1/2" rectangles, each centered on a block

### From the Folio Basic - Dusty Teal (B), cut:

- (3) 2" x WOF strips. Sub-cut (12) 2" x 10 1/2" strips.
- (4) 1 1/2" x WOF strips. Sub-cut (12) 1 1/2" x 12 1/2" strips.
- (3) 1 1/2" x WOF strips. Sew the strips together end to end with diagonal seams and cut (2) 1 1/2" x 50 1/2" strips.
- (2) 1 1/2" x 40 1/2" WOF strips.
- (7) 2 1/2" x WOF strips for the binding.

### From the Folio Basic - Brown Bag (C), cut:

- (4) 1" x WOF strips. Sub-cut (12) 1" x 11 1/2" strips.
- (4) 1" x WOF strips. Sub-cut (12) 1" x 12 1/2" strips.

### From the Tiny Calico - Cream (D), cut:

- (3) 1 1/2" x WOF strips. Sew the strips together end to end with diagonal seams and cut (2) 1 1/2" x 48 1/2" strips.
- (2) 1 1/2" x 38 1/2" WOF strips.

### From the Novelty Toss - Light Blue (E), cut:

- (2) 4 7/8" x WOF strips. Sub-cut (12) 4 7/8" squares. Cut the squares across (1) diagonal to make (24) 4 7/8" triangles.

### From the Tiny Calico - Red (F), cut:

- (1) 5 1/4" x WOF strip. Sub-cut (6) 5 1/4" squares. Cut the squares across both diagonals to make (24) 5 1/4" triangles.

### From the Folio Basic - Off White (G), cut:

- (1) 5 1/4" x WOF strip. Sub-cut (6) 5 1/4" squares. Cut the squares across both diagonals to make (24) 5 1/4" triangles.

### From the Spring Bias Plaid - Red (H), cut:

- (6) 2 1/2" x WOF strips. Sub-cut (96) 2 1/2" squares.

### From the Rose Bud Toss - Green (I), cut:

- (6) 2 1/2" x WOF strips. Sub-cut (48) 2 1/2" x 4 1/2" strips.
- (2) 2 1/2" x WOF strips. Sub-cut (24) 2 1/2" squares.

### From the Novelty Border Stripe - Cream (J), cut:

- (2) 11" x 77" Length of Fabric (LOF) strips.
- (2) 11" x 65" LOF strips.

### From the Novelty Toss - Yellow (Backing), cut:

- (2) 69" x WOF strips for the backing. Sew the strips together and trim to make the 69" x 81" back.

## Block Assembly

*Note: The arrows in figures represent the fabric print direction. Pay attention to the fabric and unit orientations when assembling the various components. Use a 1/4" seam allowance with right sides together (RST) unless otherwise noted.*

1. Sew (1) 2" x 10 1/2" Fabric B strip to each side of (1) 9 1/2" x 10 1/2" Fabric A rectangle. Sew (1) 1 1/2" x 12 1/2" Fabric B strip to the top and to the bottom of the Fabric A rectangle to make (1) Unit 1 square (Fig. 1). **Trim the unit to measure 11 1/2" x 11 1/2"**. Repeat to make (6) Unit 1 squares total.
2. Sew (1) 1" x 11 1/2" Fabric C strip to each side of (1) Unit 1 square. Sew (1) 1" x 12 1/2" Fabric C strip to the top and to the bottom of the Unit 1 square to make (1) 12 1/2" Block One square (Fig. 2). Repeat to make (6) Block One squares total.

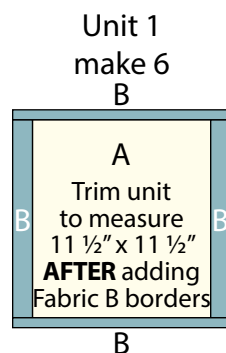


Fig. 1

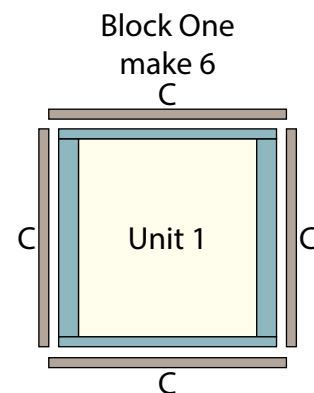


Fig. 2

3. Sew together (1) 5 1/4" Fabric G triangle and (1) 5 1/4" Fabric F triangle together along a short side. Sew (1) 4 7/8" Fabric E triangle to the long side of the newly sewn triangle to make (1) 4 1/2" Unit 2 square (Fig. 3). Repeat to make (24) Unit 2 squares total.



Fig. 3

# SPRING IS IN THE AIR

Quilt 1

Page 4

4. Sew together (4) Unit 2 squares into a 2 x 2 matrix to make (1) 8 ½" Unit 3 square (Fig. 4). Repeat to make (6) Unit 3 squares total.

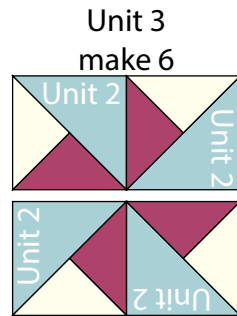


Fig. 4

5. Place (1) 2 ½" Fabric H square on the left side of (12) 2 ½" x 4 ½" Fabric I strip, right sides together (Fig. 5). Sew across the diagonal of the square from the upper right corner to the lower left corner (Fig. 5). Flip open the triangle formed and press. Trim away the excess fabric from behind the triangle, leaving a ¼" seam allowance (Fig. 6).



Fig. 5



Fig. 6

6. Place another 2 ½" Fabric H square on the right side of the 2 ½" x 4 ½" Fabric I strip, right sides together (Fig. 7). Sew across the diagonal of the square from the upper left corner to the lower right corner (Fig. 7). Flip open the triangle formed and press. Trim away the excess fabric from behind the triangle, leaving a ¼" seam allowance to make (1) Unit 4 strip (Fig. 8).

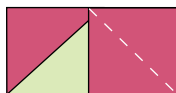


Fig. 7



Fig. 8

8. Sew together (2) Unit 4 strips end to end to make (1) Unit 5 strip (Fig. 9). Repeat to make (24) Unit 5 strips total.

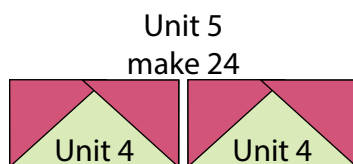


Fig. 9

9. Sew (1) 2 ½" Fabric I square to each end of (1) Unit 5 strip to make the top row. Repeat to make the bottom row. Sew (1) Unit 5 strip to each side of (1) Unit 3 square to make the middle row. Sew the (3) rows together lengthwise to make (1) 12 ½" Block Two square (Fig. 10). Repeat to make (6) Block Two squares total.

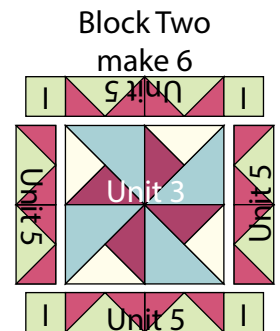


Fig. 10

10. Sew (1) Block One square to each side of (1) Block Two square to make Row One (Fig. 11). Repeat to make Row Three.

11. Sew (1) Block Two square to each side of (1) Block One square to make Row Two (Fig. 11). Repeat to make Row Four.

12. Sew together the (4) Rows from Steps 10-11, lengthwise and in numerical order from top to bottom, to make the 36 ½" x 48 ½" Center Block (Fig. 11).

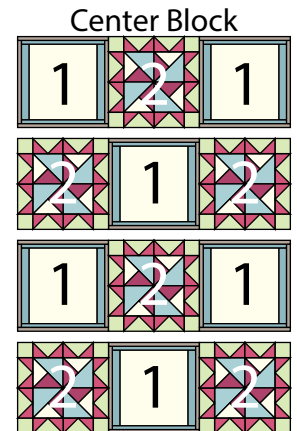


Fig. 11

## Quilt Top Assembly

*(Follow the Quilt Layout while assembling the quilt top.)*

13. Sew (1) 1 ½" x 48 ½" Fabric D strip to each side of the Center Block. Sew (1) 1 ½" x 38 ½" Fabric D strip to the top and to the bottom of the Center Block.

14. Sew (1) 1 ½" x 50 ½" Fabric B strip to each side of the Center Block. Sew (1) 1 ½" x 40 ½" Fabric B strip to the top and to the bottom of the Center Block.

15. Center (1) 11" x 77" Fabric J strip on (1) side of the Center Block and pin in place. Start sewing the strip a ¼" from the top edge of the block and stop a ¼" from the bottom edge. **DO NOT TRIM THE EXCESS.** Repeat with the opposite side.



# SPRING IS IN THE AIR

## Quilt 1

16. Repeat Step 15 to sew (1) 11" x 65" Fabric J strip to the top and to the bottom of the Center Block, making sure to stop and start ¼" away from each end of the block. To miter each corner, fold the Center Block on a diagonal, wrong side together. This should line up the strips from adjacent sides (Fig. 12).

17. Starting at the sewn seam (represented by the arrow in Figure 12), draw a 45-degree line to the edge of the fabric. Sew on the drawn line. Trim the excess fabric leaving a ¼" seam. Repeat this step with the remaining corners to make the quilt top.

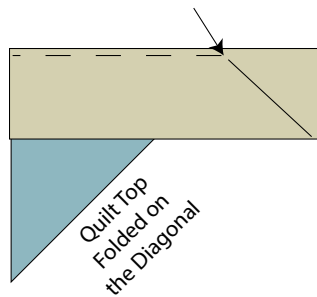
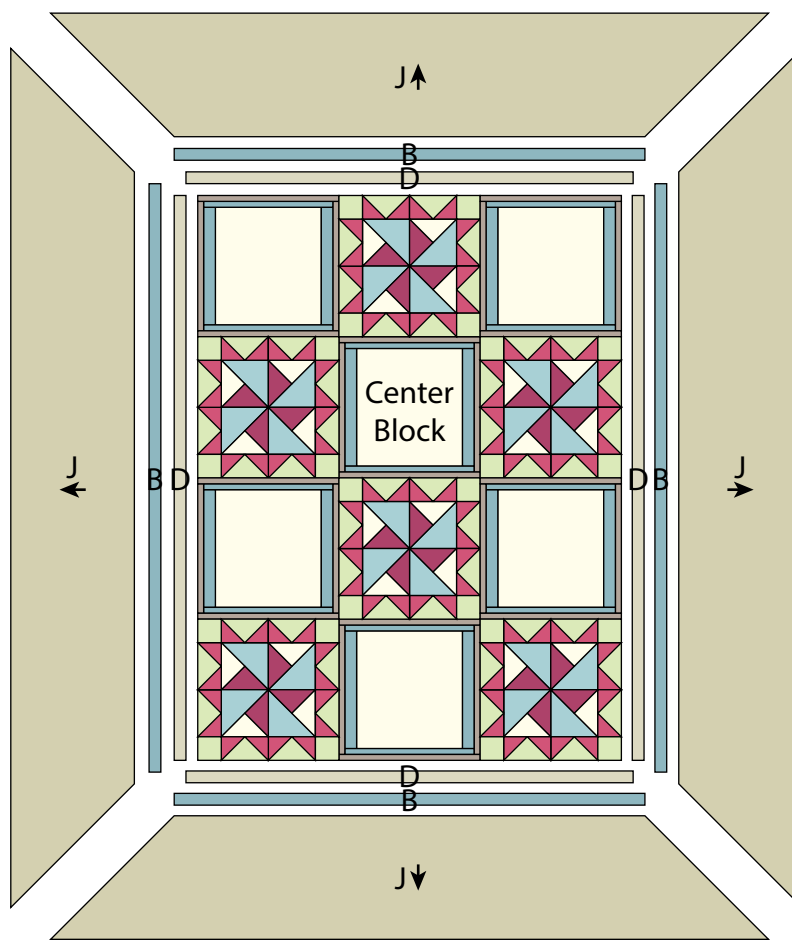


Fig. 12

18. Layer and quilt as desired.

19. Sew the (7) 2 ½" x WOF Fabric B strips together, end to end with 45-degree seams, to make the binding. Fold this long strip in half lengthwise with wrong sides together and press.

20. Bind as desired.



Quilt Layout

Every effort has been made to ensure that all projects are error free. All the information is presented in good faith, however no warranty can be given nor results guaranteed as we have no control over the execution of instructions. Therefore, we assume no responsibility for the use of this information or damages that may occur as a result. When errors are brought to our attention, we make every effort to correct and post a revision as soon as possible. Please make sure to check [www.henryglassfabrics.net](http://www.henryglassfabrics.net) for pattern updates prior to starting the project. We also recommend that you test the project prior to cutting for kits. Finally, all free projects are intended to remain free to you and are not for resale.