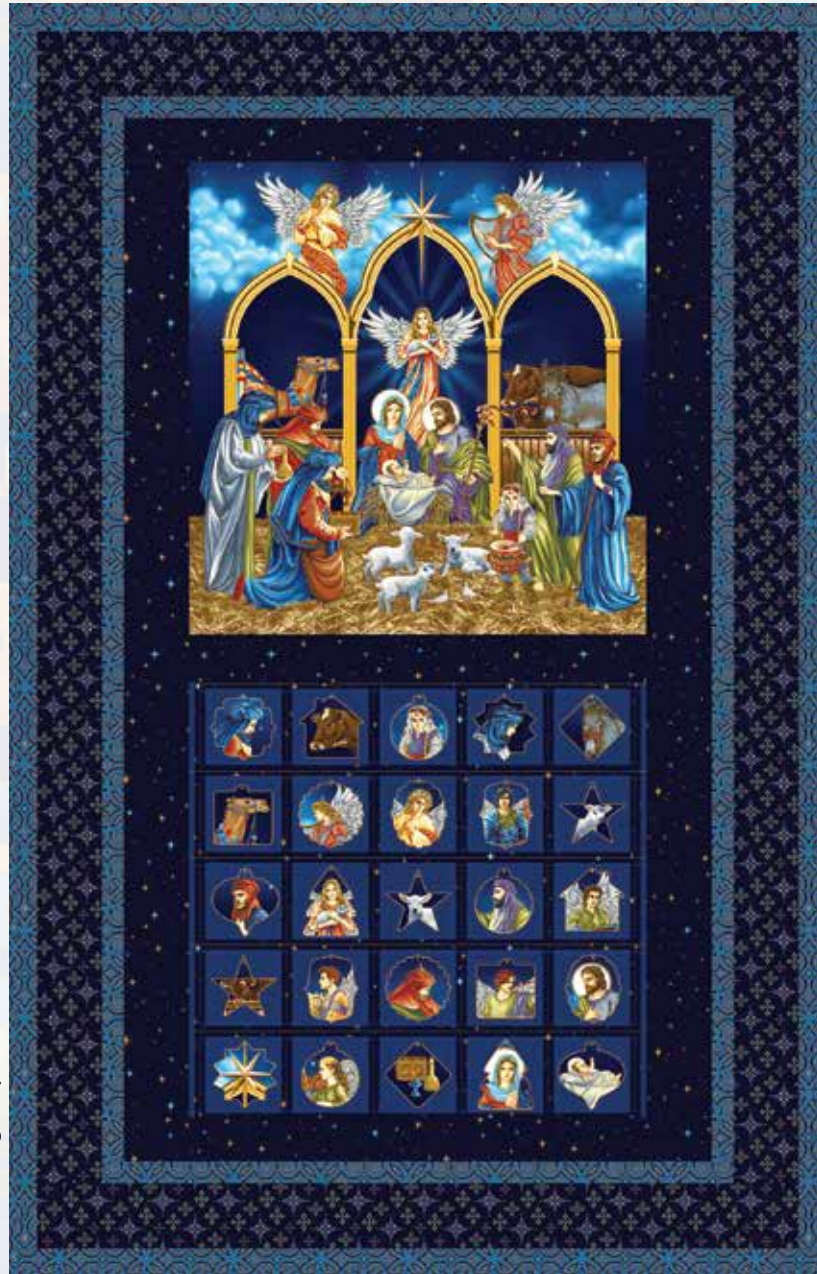


# SILENT NIGHT

• A Free Project Sheet •  
• NOT FOR RESALE •

INCLUDES  
BONUS  
ORNAMENT  
PATTERN

Quilt Design by Lisa Loessel



Skill Level: Advanced Beginner



Henry Glass & Co., Inc.



facebook

Finished Quilt Size: 37" x 60"  
Approximate Ornament Size: 2 1/2" x 2 1/2"  
49 West 37th Street, New York, NY 10018  
tel: 212-686-5194 fax: 212-532-3525  
Toll Free: 800-294-9495  
[www.henryglassfabrics.net](http://www.henryglassfabrics.net)

Please check our website for pattern updates before starting this project.

# SILENT NIGHT

Finished Quilt Size: 37" x 60"

## Fabrics in the Collection



Silent Night Joy Peace Panel  
Midnight – 2505PM-77



Silent Night Song Panel  
Midnight – 2506PM-77



Advent Calendar Panel  
Midnight – 2508PM-77



Tossed Angels  
Midnight – 2511M-77



Bethlehem Town  
Multi – 2513M-73



Bethlehem Town  
Blue – 2513M-77



Angel Blocks  
Midnight – 2507M-77



Foulard Stars  
Midnight – 2509M-77



Foulard Stars  
Black – 2509M-99



Arabesque  
Gold – 2510M-34



Arabesque  
Blue – 2510M-77



Tossed Ornament  
Midnight – 2512M-77



Mini Stars  
Midnight – 2514M-77

# SILENT NIGHT

## Page 1

### Calendar Materials

1 panel	Advent Calendar Panel - Midnight (A)	2508M-77
1 ⅛ yards	Mini Stars - Midnight (B)	2514M-77
1 yard	Arabesque - Blue (C)	2510M-77*
⅝ yard	Foulard Stars - Midnight (D)	2509M-77
4 yards	Bethlehem Town - Blue (Backing)	2513M-77

\*Includes binding

### Calendar Cutting Instructions

*Please note: all strips are cut across the width of fabric (WOF) from selvage to selvage edge unless otherwise noted.*

#### From the Advent Calendar Panel - Midnight (A), cut:

- See instructions on panel for cutting.

#### From the Mini Stars - Midnight (B), cut:

- (1) 21 ½" x 24 ½" WOF strip. (As listed on panel)
- (3) 3 ½" x WOF strips. Sew the strips together end to end with diagonal seams and cut (2) 3 ½" x 46 ½" strips.
- (2) 2 ½" x 27 ½" WOF strips.

#### From the Arabesque - Blue (C), cut:

- (3) 1 ½" x WOF strips. Sew the strips together end to end with diagonal seams and cut (2) 1 ½" x 58 ½" strips.
- (2) 1 ½" x 37 ½" WOF strips.
- (3) 1 ½" x WOF strips. Sew the strips together end to end with diagonal seams and cut (2) 1 ½" x 50 ½" strips.
- (2) 1 ½" x 29 ½" WOF strips.
- (5) 2 ½" x WOF strips for the binding.

#### From the Foulard Stars - Midnight (D), cut:

- (3) 3 ½" x WOF strips. Sew the strips together end to end with diagonal seams and cut (2) 3 ½" x 52 ½" strips.
- (2) 3 ½" x 35 ½" WOF strips.

#### From the Bethlehem Town - Blue (Backing), cut:

- (2) 68" x WOF strips for the backing. Sew the strips together and trim to make the 45" x 68" back.

### Calendar Block Assembly

1. Follow the instructions on the Advent Calendar Panel to add the pockets to the 21 ½" x 24 ½" Fabric B strip. Sew the newly sewn strip with the pockets to the bottom of the remaining Fabric A piece to make the Center Block (Fig. 1).

Follow the instructions on the Fabric A panel to complete the 21 ½" x 46 ½" Center Block

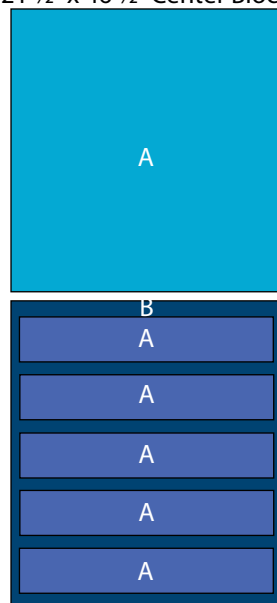
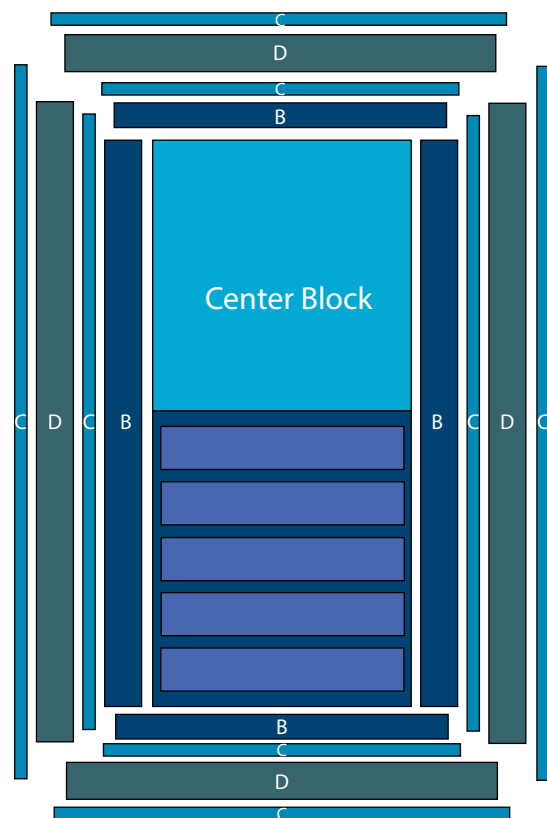


Fig. 1

### Calendar Quilt Top Assembly

*(Follow the Quilt Layout while assembling the quilt top.)*

2. Sew (1) 3 ½" x 46 ½" Fabric B strip to each side of the Center Block. Sew (1) 2 ½" x 27 ½" Fabric B strip to the top and to the bottom of the Center Block.
3. Sew (1) 1 ½" x 50 ½" Fabric C strip to each side of the Center Block. Sew (1) 1 ½" x 29 ½" Fabric C strip to the top and to the bottom of the Center Block.
4. Sew (1) 3 ½" x 52 ½" Fabric D strip to each side of the Center Block. Sew (1) 3 ½" x 35 ½" Fabric D strip to the top and to the bottom of the Center Block.
5. Sew (1) 1 ½" x 58 ½" Fabric C strip to each side of the Center Block. Sew (1) 1 ½" x 37 ½" Fabric C strip to the top and to the bottom of the Center Block.
6. Layer and quilt as desired.
7. Sew the (5) 2 ½" x WOF Fabric C strips together, end to end with 45-degree seams, to make the binding. Fold this long strip in half lengthwise with wrong sides together and press.
8. Bind as desired.



Quilt Layout

### Ornament Materials

1/3 yard Tossed Ornaments - Midnight (A) 2512M-77

### You will also need:

- 1 yard of 17" wide fusible web
- 1/3 yard of 42" wide black felt
- 6 yards of ribbon or cord for the ornaments
- Awl or craft knife

### Ornament Cutting Instructions

*Please note: All strips are cut across the width of fabric (WOF) from selvage to selvage edge unless otherwise noted.*

### From the Tossed Ornaments - Midnight (A):

- Back the fabric with fusible web following the manufacturer's instructions and fussy cut (25) assorted ornaments.

### Ornament Assembly

9. Press (1) Fabric A Ornament onto the black felt. Cut out the black felt 1/8" larger than the ornament to create a black border around the ornament (Fig. 2).

10. Finish the raw edge of the Fabric A piece with a decorative stitch to secure it to the felt.

11. Using the hole on the printed ornament as a guide, **CAREFULLY** poke a hole through both layers of fabric (Fig. 3).

*OPTIONAL: Use a grommet to finish the edge of the hole.*

12. Cut the ribbon/cord into (25) 8" pieces to create the Ornament Ties.

13. Thread (1) Ornament Tie through the hole at the top of the ornament and tie the two ends of the tie together in a knot to complete the ornament (Fig. 4).

14. Repeat to make (25) Ornaments total.

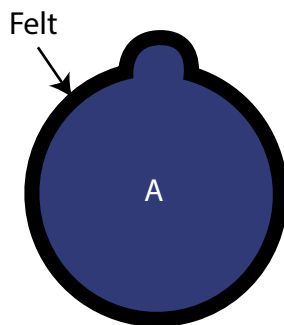


Fig. 2

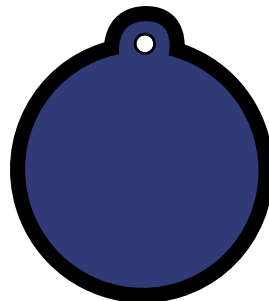


Fig. 3

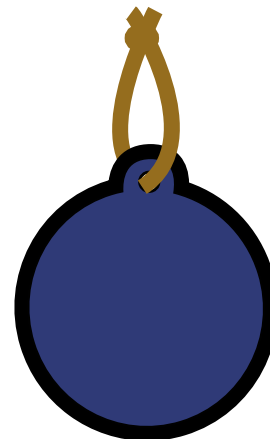


Fig. 4