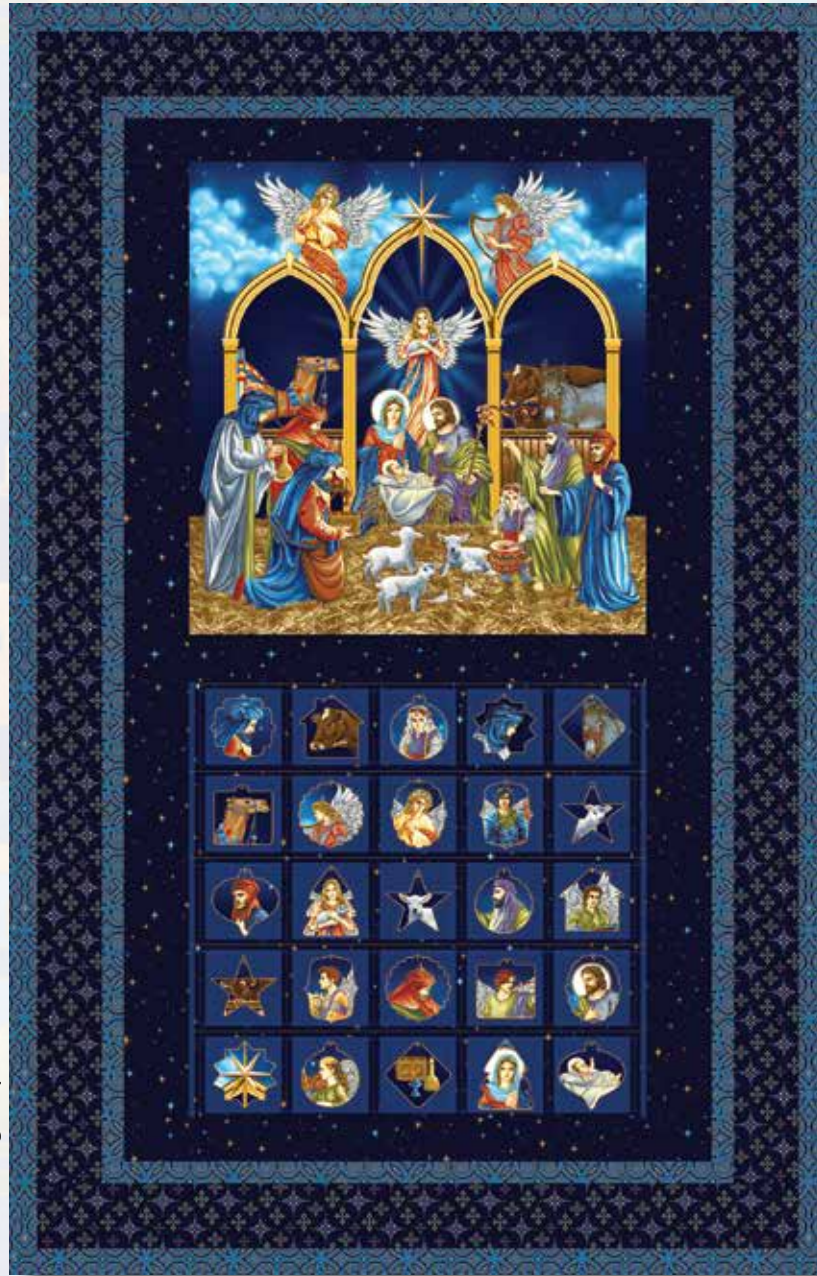


SILENT NIGHT

• A Free Project Sheet •
• NOT FOR RESALE •



Quilt Design by Lisa Loessel

Quilt 2

Skill Level: Advanced Beginner

 Henry Glass & Co., Inc.



[facebook](#)

Finished Quilt Size: 37" x 60"
49 West 37th Street, New York, NY 10018
tel: 212-686-5194 fax: 212-532-3525
Toll Free: 800-294-9495
www.henryglassfabrics.net

Please check our website for pattern updates before starting this project.

SILENT NIGHT Quilt 2

Fabrics in the Collection



Silent Night Joy Peace Panel
Midnight – 2505PM-77



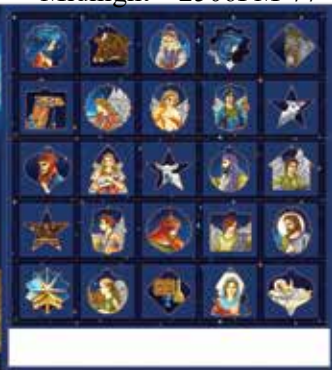
Silent Night Song Panel
Midnight – 2506PM-77



Angel Blocks
Midnight – 2507M-77



Advent Calendar Panel
Midnight – 2508PM-77



Foulard Stars
Midnight – 2509M-77



Foulard Stars
Black – 2509M-99



Arabesque
Gold – 2510M-34



Arabesque
Blue – 2510M-77



Tossed Angels
Midnight – 2511M-77



Tossed Ornament
Midnight – 2512M-77



Bethlehem Town
Multi – 2513M-73



Bethlehem Town
Blue – 2513M-77



Mini Stars
Midnight – 2514M-77

SILENT NIGHT Quilt 2

Materials

1 panel	Advent Calendar Panel - Midnight (A)	2508M-77
1 1/8 yards	Mini Stars - Midnight (B)	2514M-77
1 yard	Arabesque - Blue (C)	2510M-77*
5/8 yard	Foulard Stars - Midnight (D)	2509M-77
4 yards	Bethlehem Town - Blue (Backing)	2513M-77

*Includes binding

Cutting Instructions

Please note: all strips are cut across the width of fabric (WOF) from selvage to selvage unless otherwise noted.

From the Advent Calendar Panel - Midnight (A), cut:

- See instructions on panel for cutting.

From the Mini Stars - Midnight (B), cut:

- (1) 21 1/2" x 24 1/2" WOF strip. (As listed on panel)
- (3) 3 1/2" x WOF strips. Sew the strips together end to end with diagonal seams and cut (2) 3 1/2" x 46 1/2" strips.
- (2) 2 1/2" x 27 1/2" WOF strips.

From the Arabesque - Blue (C), cut:

- (3) 1 1/2" x WOF strips. Sew the strips together end to end with diagonal seams and cut (2) 1 1/2" x 58 1/2" strips.
- (2) 1 1/2" x 37 1/2" WOF strips.
- (3) 1 1/2" x WOF strips. Sew the strips together end to end with diagonal seams and cut (2) 1 1/2" x 50 1/2" strips.
- (2) 1 1/2" x 29 1/2" WOF strips.
- (5) 2 1/2" x WOF strips for the binding.

From the Foulard Stars - Midnight (D), cut:

- (3) 3 1/2" x WOF strips. Sew the strips together end to end with diagonal seams and cut (2) 3 1/2" x 52 1/2" strips.
- (2) 3 1/2" x 35 1/2" WOF strips.

From the Bethlehem Town - Blue (Backing), cut:

- (2) 68" x WOF strips for the backing. Sew the strips together and trim to make the 45" x 68" back.

Block Assembly

1. Follow the instructions on the Advent Calendar Panel to add the pockets to the 21 1/2" x 24 1/2" Fabric B strip. Sew the newly sewn strip with the pockets to the bottom of the remaining Fabric A piece to make the Center Block (Fig. 1).

Follow the instructions on the Fabric A panel to complete the 21 1/2" x 46 1/2" Center Block

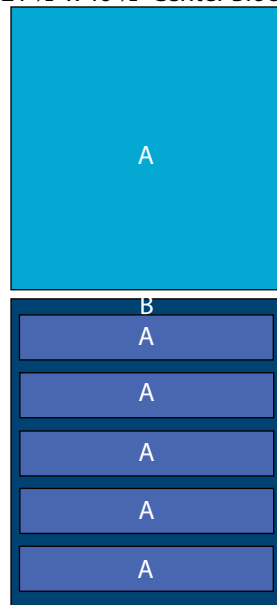
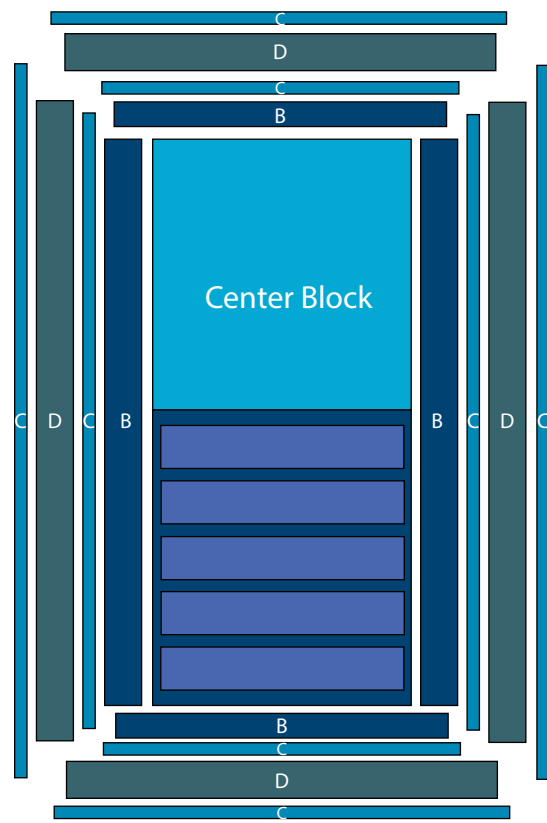


Fig. 1

Quilt Top Assembly

(Follow the Quilt Layout while assembling the quilt top.)

2. Sew (1) 3 1/2" x 46 1/2" Fabric B strip to each side of the Center Block. Sew (1) 2 1/2" x 27 1/2" Fabric B strip to the top and to the bottom of the Center Block.
3. Sew (1) 1 1/2" x 50 1/2" Fabric C strip to each side of the Center Block. Sew (1) 1 1/2" x 29 1/2" Fabric C strip to the top and to the bottom of the Center Block.
4. Sew (1) 3 1/2" x 52 1/2" Fabric D strip to each side of the Center Block. Sew (1) 3 1/2" x 35 1/2" Fabric D strip to the top and to the bottom of the Center Block.
5. Sew (1) 1 1/2" x 58 1/2" Fabric C strip to each side of the Center Block. Sew (1) 1 1/2" x 37 1/2" Fabric C strip to the top and to the bottom of the Center Block.
6. Layer and quilt as desired.
7. Sew the (5) 2 1/2" x WOF Fabric C strips together, end to end with 45-degree seams, to make the binding. Fold this long strip in half lengthwise with wrong sides together and press.
8. Bind as desired.



Quilt Layout

Every effort has been made to ensure that all projects are error free. All the information is presented in good faith, however no warranty can be given nor results guaranteed as we have no control over the execution of instructions. Therefore, we assume no responsibility for the use of this information or damages that may occur as a result. When errors are brought to our attention, we make every effort to correct and post a revision as soon as possible. Please make sure to check www.henryglassfabrics.net for pattern updates prior to starting the project. We also recommend that you test the project prior to cutting for kits. Finally, all free projects are intended to remain free to you and are not for resale.