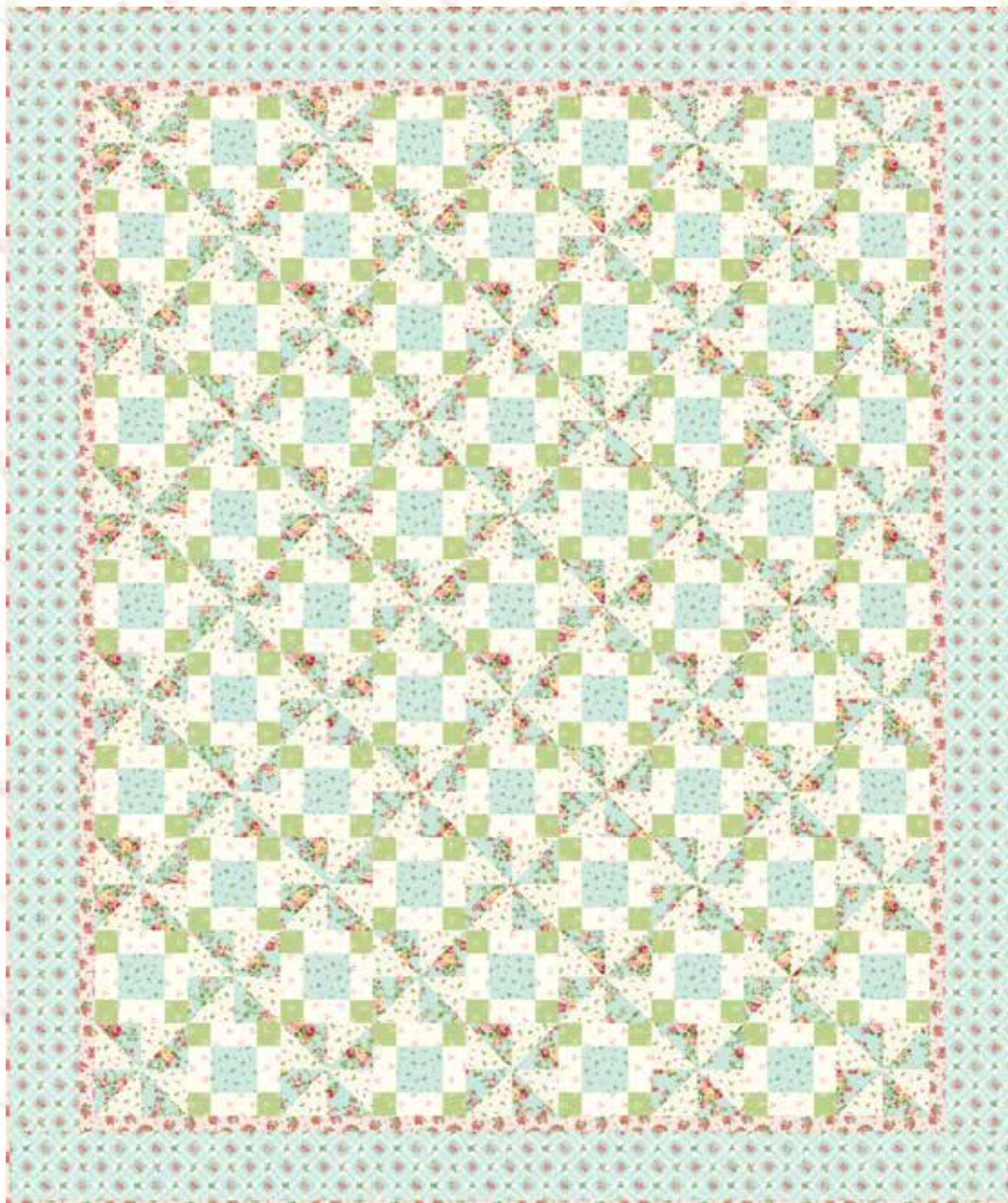


Serene Garden



A Free Project Sheet
NOT FOR RESALE

By Mary Jane Carey



Quilt Design by Mary Jane Carey

Quilt 2

Skill Level: Advanced Beginner



Finished Quilt Size: 65" x 77"
(165.10 cm x 195.58 cm)
49 West 37th Street, New York, NY 10018
tel: 212-686-5194 fax: 212-532-3525
Toll Free: 800-294-9495
www.henryglassfabrics.net
Please check our website for pattern updates before starting this project.

SERENE GARDEN Quilt 2

Finished Quilt Size: 65" x 77"
(165.10 cm x 195.58 cm)

Fabrics in the Collection



Serene Garden Master Florals
Cream – 3112-44



Serene Garden Master Florals
Aqua – 3112-76



Floral Vines
Pink – 3113-22



Floral Vines
Cream – 3113-44



Floral Vines
Aqua – 3113-76



Trellis Florals
Pink – 3114-22



Trellis Florals
Aqua – 3114-76



Nosegays
Pink – 3115-22



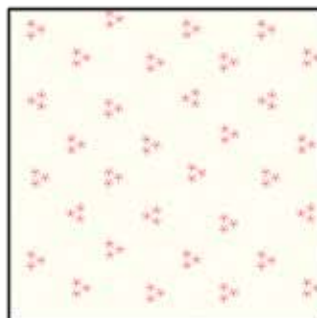
Nosegays
Cream – 3115-44



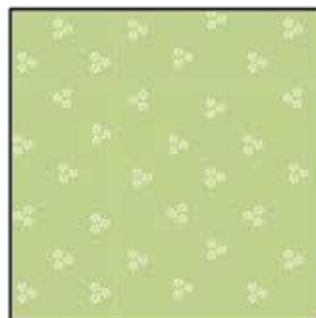
Rosebuds
Cream – 3116-44



Rosebuds
Aqua – 3116-76



Flower Dots
Cream/Pink – 3117-42



Flower Dots
Green – 3117-66

Materials

1 ¼ yards (1.15 m)	Floral Vines - Aqua (A)	3113-76
1 ¼ yards (1.15 m)	Rosebuds - Cream (B)	3116-44
⅔ yard (0.61 m)	Flower Dots - Green (C)	3117-66
⅝ yard (0.58 m)	Rosebuds - Aqua (D)	3116-76
1 ⅛ yards (1.03 m)	Flower Dots - Cream/Pink (E)	3117-42
1 yard (0.92 m)	Nosegays - Pink (F)	3115-22*
1 ¼ yards (1.15 m)	Trellis Florals - Aqua (G)	3114-76
5 yards (4.58 m)	Floral Vines - Cream (Backing)	3113-44

*Includes binding

Cutting Instructions

Please note: All strips are cut across the width of fabric (WOF) from selvage to selvage unless otherwise noted.

From the Floral Vines - Aqua (A), cut:

- (10) 3 ⅞" x WOF strips. Sub-cut (100) 3 ⅞" squares.

From the Rosebuds - Cream (B), cut:

- (10) 3 ⅞" x WOF strips. Sub-cut (100) 3 ⅞" squares.

From the Flower Dots - Green (C), cut:

- (10) 2" x WOF strips. Sub-cut (196) 2" squares.

From the Rosebuds - Aqua (D), cut:

- (5) 3 ½" x WOF strips. Sub-cut (49) 3 ½" squares.

From the Flower Dots - Cream/Pink (E), cut:

- (17) 2" x WOF strips. Sub-cut (196) 2" x 3 ½" strips.

From the Nosegays - Pink (F), cut:

- (4) 1 ½" x WOF strips. Sew the strips together end to end with diagonal seams and cut (2) 1 ½" x 66 ½" strips.
- (3) 1 ½" x WOF strips. Sew the strips together end to end with diagonal seams and cut (2) 1 ½" x 56 ½" strips.
- (8) 2 ½" x WOF strips for the binding.

From the Trellis Florals - Aqua (G), cut:

- (4) 5" x WOF strips. Sew the strips together end to end with diagonal seams and cut (2) 5" x 68 ½" strips.
- (4) 5" x WOF strips. Sew the strips together end to end with diagonal seams and cut (2) 5" x 65 ½" strips.

From the Floral Vines - Cream (Backing), cut:

- (2) 85" x WOF strips for the backing. Sew the strips together and trim to make the 73" x 85" back.

Block Assembly

Note: Pay attention to the unit orientations when assembling the various components. Use a ¼" seam allowance with right sides together (RST) unless otherwise noted.

1. Place (1) 3 ⅞" Fabric A square on top of (1) 3 ⅞" Fabric B square, right sides together. Draw a line across the diagonal of the top square (Fig. 1). Sew ¼" away from each side of the drawn diagonal line (Fig. 1). Cut the (2) squares apart on the drawn diagonal line (Fig. 2) to make (2) half-square triangles. Trim the half-square triangles to measure 3 ½" square to make (2) Unit 1 squares (Fig. 3). Repeat to make (200) Unit 1 squares total.

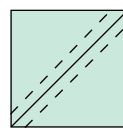


Fig. 1

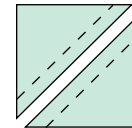


Fig. 2

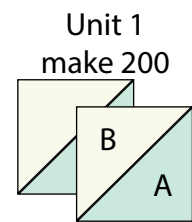


Fig. 3

2. Follow Figure 4 and sew together (4) Unit 1 squares into a 2 x 2 matrix to make (1) 6 ½" Block One square (Fig. 4). Repeat to make (50) Block One squares total.

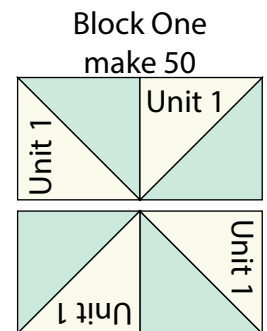


Fig. 4

3. Sew (1) 2" Fabric C square to each end of (1) 2" x 3 ½" Fabric E strip to make the top row. Repeat to make the bottom row. Sew (1) 2" x 3 ½" Fabric E strip to each side of (1) 3 ½" Fabric D square to make the middle row. Sew together the (3) rows lengthwise to make (1) 6 ½" Block Two square (Fig. 5). Repeat to make (49) Block Two squares total.

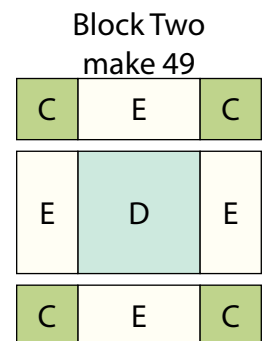


Fig. 5

4. Sew together (5) Block One squares and (4) Block Two squares, alternating them from left to right, to make Row One (Fig. 6). Repeat to make Row Three, Row Five, Row Seven, Row Nine and Row Eleven.

5. Sew together (5) Block Two squares and (4) Block One squares, alternating them from left to right, to make Row Two (Fig. 6). Repeat to make Row Four, Row Six, Row Eight and Row Ten.

6. Sew together the (11) Rows from Steps 4-5, lengthwise and in numerical order from the top to the bottom, to make the 54 1/2" x 66 1/2" Center Block (Fig. 6).

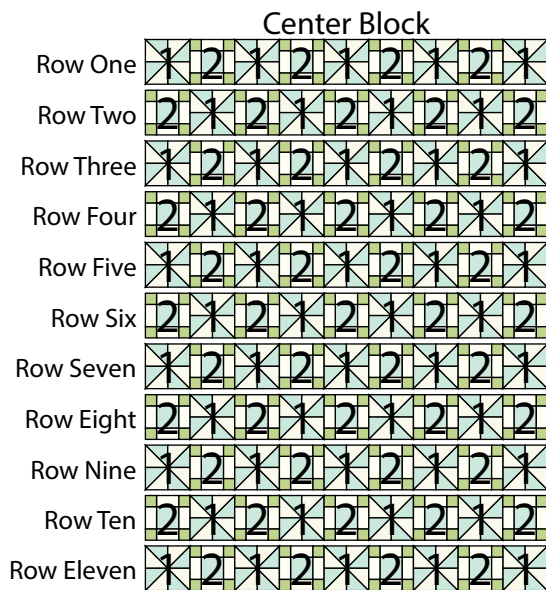


Fig. 6

Quilt Top Assembly

(Follow the Quilt Layout while assembling the quilt top.)

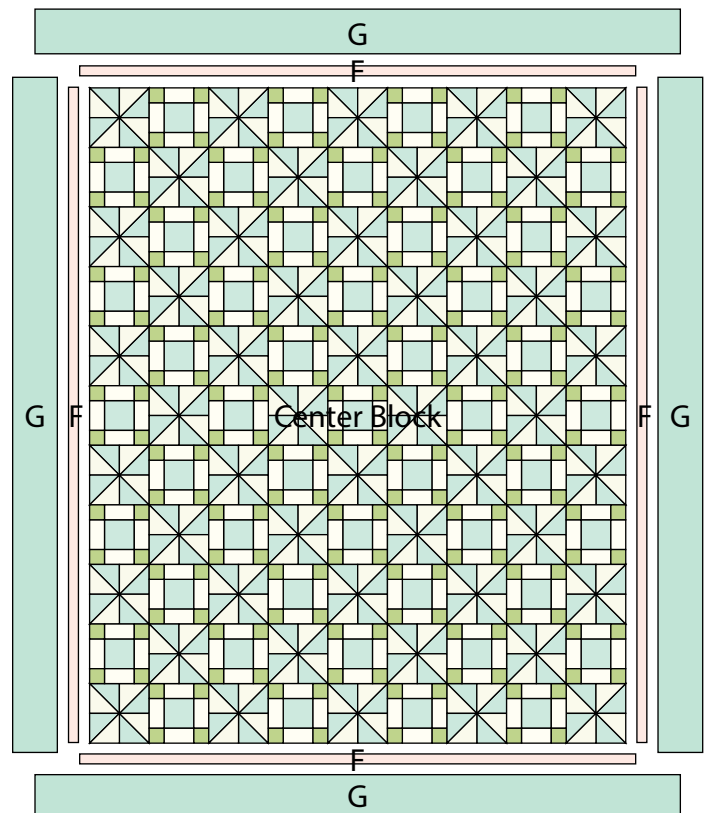
7. Sew (1) 1 1/2" x 66 1/2" Fabric F strip to each side of the Center Block. Sew (1) 1 1/2" x 56 1/2" Fabric F strip to the top and to the bottom of the Center Block.

8. Sew (1) 5" x 68 1/2" Fabric G strip to each side of the Center Block. Sew (1) 5" x 65 1/2" Fabric G strip to the top and to the bottom of the Center Block to make the quilt top.

9. Layer and quilt as desired.

10. Sew the (8) 2 1/2" x WOF Fabric F strips together, end to end with 45-degree seams, to make the binding. Fold this long strip in half lengthwise with wrong sides together and press.

11. Bind as desired.



Every effort has been made to ensure that all projects are error free. All the information is presented in good faith, however no warranty can be given nor results guaranteed as we have no control over the execution of instructions. Therefore, we assume no responsibility for the use of this information or damages that may occur as a result. When errors are brought to our attention, we make every effort to correct and post a revision as soon as possible. Please make sure to check www.henryglassfabrics.net for pattern updates prior to starting the project. We also recommend that you test the project prior to cutting for kits. Finally, all free projects are intended to remain free to you and are not for resale.