

Scrappenstance

Morning Quilt

by Kim Diehl



Finished Quilt Size: 70½" x 70½"



49 West 37th Street, New York, NY 10018
tel: 212-686-5194 • fax: 212-532-3525
Toll-free: 800-294-9495
www.henryglassfabrics.net



Henry Glass & Co., Inc.

facebook

Scrappenstance

Morning Quilt

Finished Quilt Size: 70½" x 70½"

MATERIALS

Yardages are based on a 42" width of useable fabric after prewashing and removing selvages.

2½ yards of wheat medium uneven plaid for blocks and sashing (F9797-40)
1⅞ yards of chestnut large uneven plaid for blocks and binding (F9796-33)
15 fat quarters (18" x 21") of assorted plaids, stripes, and textures for blocks (F9791-11; F9792-55, 66; F9793-33, 88; F9794-66, 88; F9795-55, 77; F9796-30, 77; F9797-66; F9798-44; F9799-66; F9800-30)
½ yard of black primitive plaid for sashing squares (F9800-99)
4½ yards of flannel of choice for backing (Kim suggests the taupey-gray ticking stripe, F9793-33)
63" x 63" square of batting
Standard sewing and quilting supplies

CUTTING

Referring to the swatch page at the end of this handout as needed, cut all pieces across the width of the fabric in the order given unless otherwise noted.

From the wheat flannel, cut:

6 strips, 3⅞" x 42"; crosscut into 60 squares, 3⅞" x 3⅞".
Cut each square in half diagonally *once* to yield 2 triangles (total of 120)
1 strip, 3⅞" x 42"; from this strip, cut:
4 squares, 3⅞" x 3⅞"; cut each square in half diagonally *once* to yield 2 triangles (total of 8, grand total of 128 with previously cut triangles)
1 rectangle, 2½" x 11½"
6 strips, 3½" x 42"; crosscut into 64 squares, 3½" x 3½"
13 strips, 2½" x 42"; crosscut into 39 rectangles, 2½" x 11½". From the scraps of each strip, cut a total of 25 squares, 2½" x 2½"

From the chestnut flannel, cut:

1 strip, 3⅞" x 42"; from this strip, cut:
4 squares, 3⅞" x 3⅞"; cut each square in half diagonally *once* to yield 2 triangles (total of 8)
4 squares, 3½" x 3½"
1 strip, 3½" x 42"; crosscut into 2 rectangles, 3½" x 6½", and 1 rectangle, 3½" x 15½"
Enough 2½"-wide bias strips to make 282" of binding when joined together end to end
Keep the 8 triangles and 4 squares organized into a patchwork set. Keep the three rectangles organized into a block sashing set.

From each of the 15 assorted plaids, stripes, and textures, cut:

1 strip, 3⅞" x 21"; crosscut into 4 squares, 3⅞" x 3⅞" (combined total of 60, grand total of 64 with previously cut squares). Cut each square in half diagonally *once* to yield 2 triangles (combined total of 120, grand total of 128 with previously cut triangles).
3 strips, 3½" x 21"; crosscut into:
4 squares, 3½" x 3½"
2 rectangles, 3½" x 6½"
1 rectangle, 3½" x 15½"
Keep the 8 triangles and 4 squares cut from each print organized into a patchwork set. Keep the three rectangles cut from each print organized into a block sashing set.

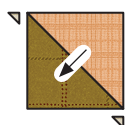
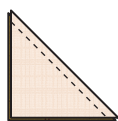
From the black plaid, cut:

5 strips, 2½" x 42"; crosscut into 80 squares, 2½" x 2½"

PIECING the Blocks

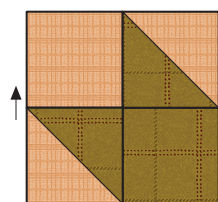
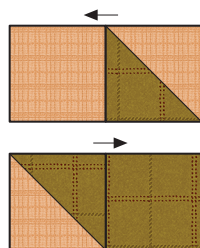
Sew all pieces with right sides together and a $\frac{1}{4}$ " seam allowance unless otherwise noted. Press the seam allowances as indicated by the arrows or otherwise specified. Please note that you can choose to use the block color combinations shown in the featured quilt on the handout cover, or create your own!

- 1 Select a patchwork set cut from single print, a block sashing set cut from a second print, eight wheat $3\frac{3}{8}$ " triangles, and four wheat $3\frac{1}{2}$ " squares.
- 2 Layer a $3\frac{3}{8}$ " triangle from the patchwork set with a wheat $3\frac{3}{8}$ " triangle. Stitch the pair along the long diagonal edges. Press. Trim away the dog-ear points. Repeat to piece eight half-square-triangle units measuring $3\frac{1}{2}$ " square, including the seam allowances.



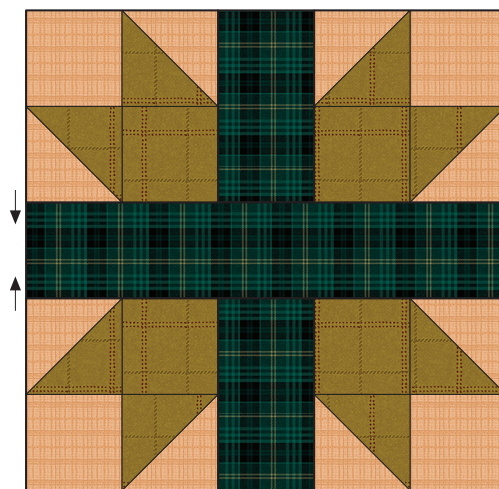
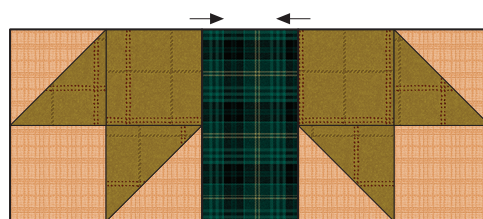
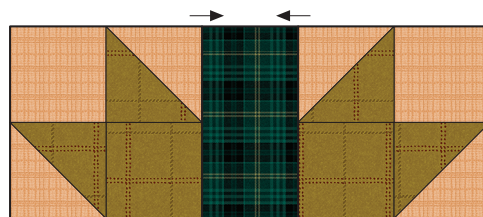
Make 8 units,
 $3\frac{1}{2}$ " x $3\frac{1}{2}$ ".

- 3 Referring to the illustration, lay out two half-square-triangle units, one $3\frac{1}{2}$ " square from the patchwork set, and one black $3\frac{1}{2}$ " square in two horizontal rows. Join the pieces in each row. Press. Join the rows. Press. Repeat to piece four quarter-block units measuring $6\frac{1}{2}$ " square, including the seam allowances.



Make 4 quarter-block units,
 $6\frac{1}{2}$ " x $6\frac{1}{2}$ ".

- 4 Using the illustration as a guide, lay out the four quarter-block units and the three rectangles from the block sashing set in three horizontal rows. Join the pieces in the top and bottom rows. Press. Join the rows. Press. The pieced block should measure $15\frac{1}{2}$ " square, including the seam allowances.



Pieced block,
 $15\frac{1}{2}$ " x $15\frac{1}{2}$ "

- 5 Repeat steps 1–4 to piece a total of 16 blocks.

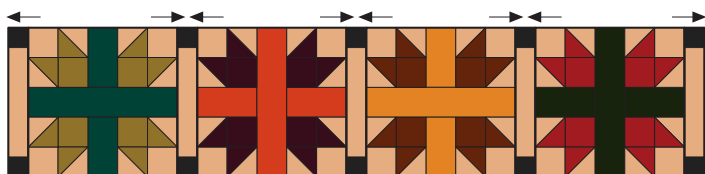
PIECING *the Quilt Top*

- 1 Join a black $2\frac{1}{2}$ " square to each short end of a wheat $2\frac{1}{2}$ " x $11\frac{1}{2}$ " rectangle. Press. Repeat to piece a total of 40 sashing units, $2\frac{1}{2}$ " x $15\frac{1}{2}$ ", including the seam allowances.



Make 40 sashing units,
 $2\frac{1}{2}$ " x $15\frac{1}{2}$ ".

- 2 Lay out five sashing units and four pieced blocks in alternating positions. Join the pieces. Press. Repeat to piece a total of four block rows measuring $15\frac{1}{2}$ " x $70\frac{1}{2}$ ", including the seam allowances.



Make 4 block rows,
 $15\frac{1}{2}$ " x $70\frac{1}{2}$ ".

- 3 Lay out four sashing units and five wheat $2\frac{1}{2}$ " squares in alternating positions. Join the pieces. Press. Repeat to piece a total of five sashing rows measuring $2\frac{1}{2}$ " x $70\frac{1}{2}$ ", including the seam allowances.



Make 5 sashing rows,
 $2\frac{1}{2}$ " x $70\frac{1}{2}$ ".

- 4 Referring to the assembly diagram, lay out the four pieced block rows from step 2 and the five sashing rows from step 3 in alternating positions. Join the rows. Press the seam allowances toward the sashing rows.



Assembly diagram

COMPLETING *the Quilt*

Layer and baste the quilt top, batting, and backing. Quilt the layers. Join the chestnut bias binding strips to make one length and use it to bind the quilt.

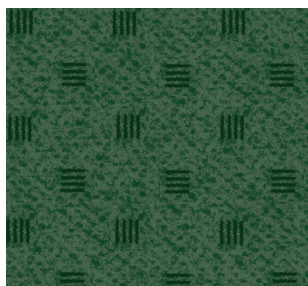
Every effort has been made to ensure that all projects are error free. All the information is presented in good faith, however no warranty can be given nor results guaranteed as we have no control over the execution of instructions. Therefore, we assume no responsibility for the use of this information or damages that may occur as a result. When errors are brought to our attention, we make every effort to correct and post a revision as soon as possible. Please make sure to check www.henryglassfabrics.com for pattern updates prior to starting the project. We also recommend that you test the project prior to cutting for kits. Finally, all free projects are intended to remain free to you and are not for resale or other forms of distribution.



Henry Glass & Co., Inc.

©2021 Kim Diehl

Scrappenstance *Fabrics in the Collection*



F9791-11
Stacked Lines on Texture - Turquoise



F9792-55
Small Plaid - Plum



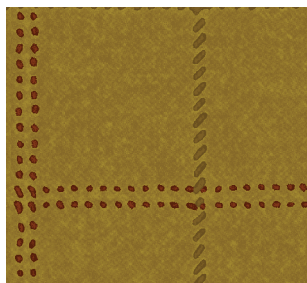
F9792-66
Small Plaid - Evergreen



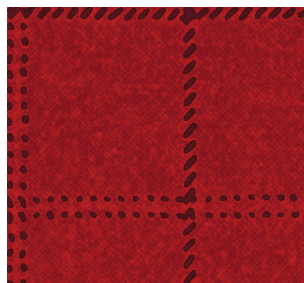
F9793-33
Ticking Stripe - Taupey-Gray



F9793-88
Ticking Stripe - Cranberry



F9794-66
Windowpane Plaid - Pistachio



F9794-88
Windowpane Plaid - Cranberry



F9795-55
Medium Plaid - Wine



F9795-77
Medium Plaid - Midnight Blue



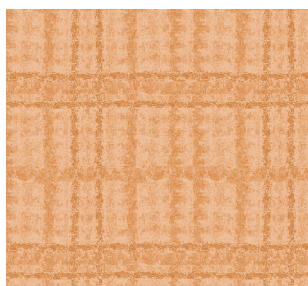
F9796-30
Large Uneven Plaid - Pumpkin



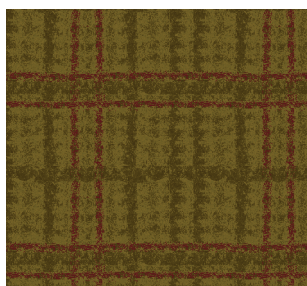
F9796-33
Large Uneven Plaid - Chestnut



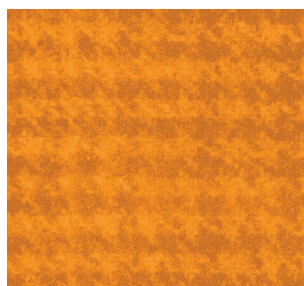
F9796-77
Large Uneven Plaid - Teal



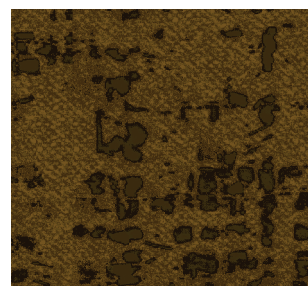
F9797-40
Medium Uneven Plaid - Wheat



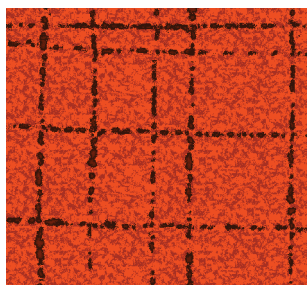
F9797-66
Medium Uneven Plaid - Avocado



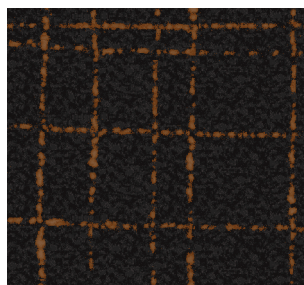
F9798-44
Small Houndstooth - Mustard



F9799-66
Large Allover Texture - Avocado



F9800-30
Primitive Plaid - Pumpkin



F9800-99
Primitive Plaid - Black