

Say it with a Stitch

• A Free Project Sheet •
• NOT FOR RESALE •

By Mandy Shaw



Quilt Design by Heidi Pridemore

Quilt 2

Skill Level: Advanced Beginner

 Henry Glass & Co., Inc.



facebook

Finished Quilt Size: 60 ½" x 60 ½"
49 West 37th Street, New York, NY 10018
tel: 212-686-5194 fax: 212-532-3525
Toll Free: 800-294-9495
www.henryglassfabrics.net

Please check our website for pattern updates before starting this project.

SAY IT WITH A STITCH Quilt 2

Fabrics in the Collection



24 Inch Block Repeat
Cream/Red – 146-8



Sewing Motifs Linework
Red – 147-88



Geometric Squares
Red – 148-88



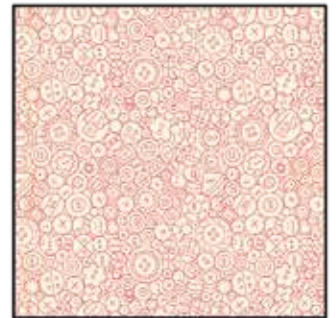
Thimbles Linework
Red – 149-88



Tiny Flower Linework
Cream/Red – 150-8



Patchwork Sewing Motifs and
Sayings - Cream/Red – 151-8



Buttons Linework
Cream/Red – 152-8



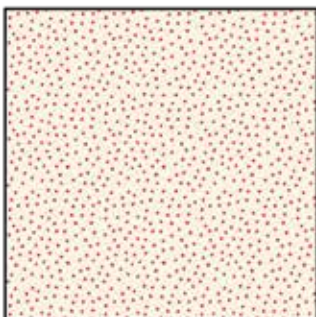
Vases and Sewing Machine
Linework - Red – 153-88



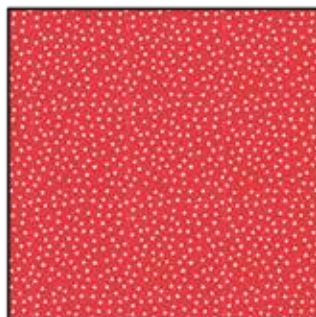
Tossed Hearts
Red – 154-88



Novelty Sewing Stripe
Red – 155-88



Red Dots on Cream
Cream/Red – 156-8



Cream Dots on Red
Red – 157-88



24 inch Sewing Panel
Cream/Red – 158P-8

Materials

2/3 yard	24 Inch Block Repeat - Cream/Red (A)	146-8
3/8 yard	Geometric Squares - Red (B)	148-88
3/4 yard	Tiny Flower Linework - Cream/Red (C)	150-8
1 yard	Cream Dots on Red - Red (D)	157-88*
3/8 yard	Thimbles Linework - Red (E)	149-88
7/8 yard	Novelty Sewing Stripe - Red (F)	155-88
1 1/2 yards	Patchwork Sewing Motifs and Sayings - Cream/ Red (G)	151-8
4 yards	Tossed Hearts - Red (Backing)	154-88

*Includes binding

Cutting Instructions

Please note: All strips are cut across the width of fabric (WOF) from selvage to selvage edge unless otherwise noted.

From the 24 Inch Block Repeat - Cream/Red (A):

- Fussy cut (8) 9 3/4" squares, each centered on a block.

From the Geometric Squares - Red (B), cut:

- (2) 2" x WOF strips. Sub-cut (8) 2" x 9 3/4" strips.
- (3) 2" x WOF strips. Sub-cut (8) 2" x 12 3/4" strips.

From the Tiny Flower Linework - Cream/Red (C), cut:

- (2) 2" x WOF strips. Sub-cut (6) 2" x 11 1/2" strips.
- (3) 2" x 27" WOF strips.
- (8) 1 1/4" x 27" WOF strips.

From the Cream Dots on Red - Red (D), cut:

- (8) 1 1/4" x 27" WOF strips.
- (7) 2 1/2" x WOF strips for the binding.

From the Thimbles Linework - Red (E), cut:

- (2) 2" x WOF strips. Sub-cut (8) 2" x 9 3/4" strips.
- (3) 2" x WOF strips. Sub-cut (8) 2" x 12 3/4" strips.

From the Novelty Sewing Stripe - Red (F):

- Fussy cut (4) 8 1/2" x 27" Length of Fabric (LOF) strips.

From the Patchwork Sewing Motifs and Sayings - Cream/ Red (G), cut:

- (2) 6 1/2" x 49" LOF strips.
- From the remaining fabric, cut (2) 6 1/2" x 61" WOF strips, piece as needed.

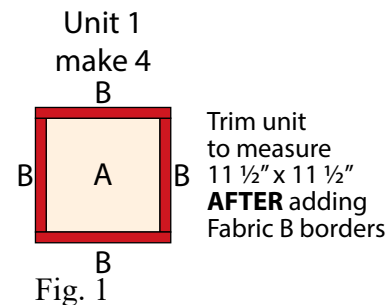
From the Tossed Hearts - Red (Backing), cut:

- (2) 69" x WOF strips for the backing. Sew the strips together and trim to make the 69" x 69" back.

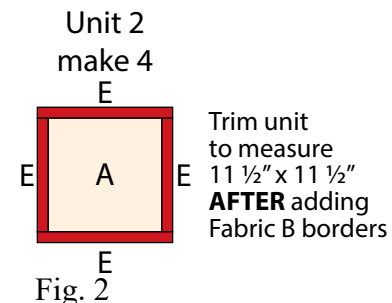
Block Assembly

Note: The arrows in figures represent the fabric print direction. Pay attention to the fabric and unit orientations when assembling the various components. Use a 1/4" seam allowance with right sides together (RST) unless otherwise noted.

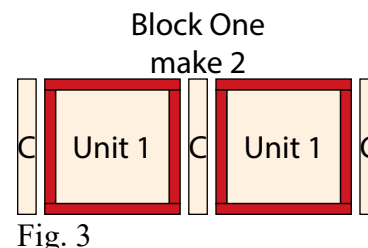
1. Sew (1) 2" x 9 3/4" Fabric B strip to each side of (1) 9 3/4" Fabric A square. Sew (1) 2" x 12 3/4" Fabric B strip to the top and to the bottom of the Fabric A square to make (1) Unit 1 square (Fig. 1). **Trim the block to measure 11 1/2" x 11 1/2"**. Repeat to make (4) Unit 1 squares total.



2. Sew (1) 2" x 9 3/4" Fabric E strip to each side of (1) 9 3/4" Fabric A square. Sew (1) 2" x 12 3/4" Fabric E strip to the top and to the bottom of the Fabric A square to make (1) Unit 2 square (Fig. 2). **Trim the block to measure 11 1/2" x 11 1/2"**. Repeat to make (4) Unit 2 squares total.



3. Sew (3) 2" x 11 1/2" Fabric C strips and (2) Block One squares together, alternating them from left to right, to make (1) Block One strip (Fig. 2). Repeat to make a second Block One strip.



4. Sew together (3) 2" x 27" Fabric C strips and (2) Block One strips, lengthwise and alternating them from top to bottom, to make the 27" x 27" Center Block (Fig. 4).

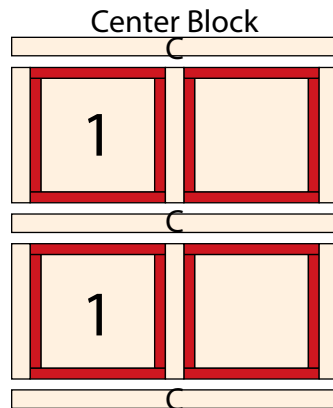


Fig. 4

5. Sew (1) 1 1/4" x 27" Fabric C strip to the top and to the bottom of (1) 8 1/2" x 27" Fabric F strip lengthwise. Sew (1) 1 1/4" x 27" Fabric D strip to the top and to the newly sewn strip lengthwise to make (1) Unit 3 rectangle (Fig. 5). Repeat to make (4) Unit 3 rectangles total.

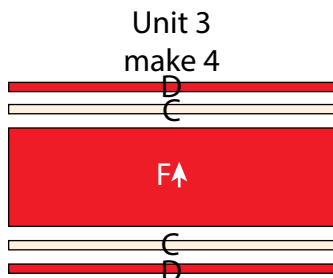


Fig. 5

6. Sew (1) Unit 2 square to each end of (1) Unit 3 rectangle to make the Top Border (Fig. 6). Repeat to make the Bottom Border (Fig. 7).

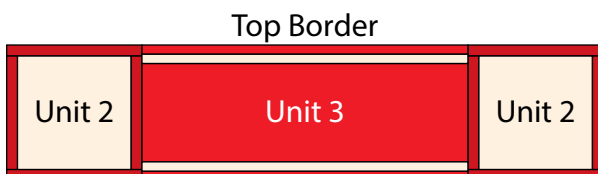


Fig. 6

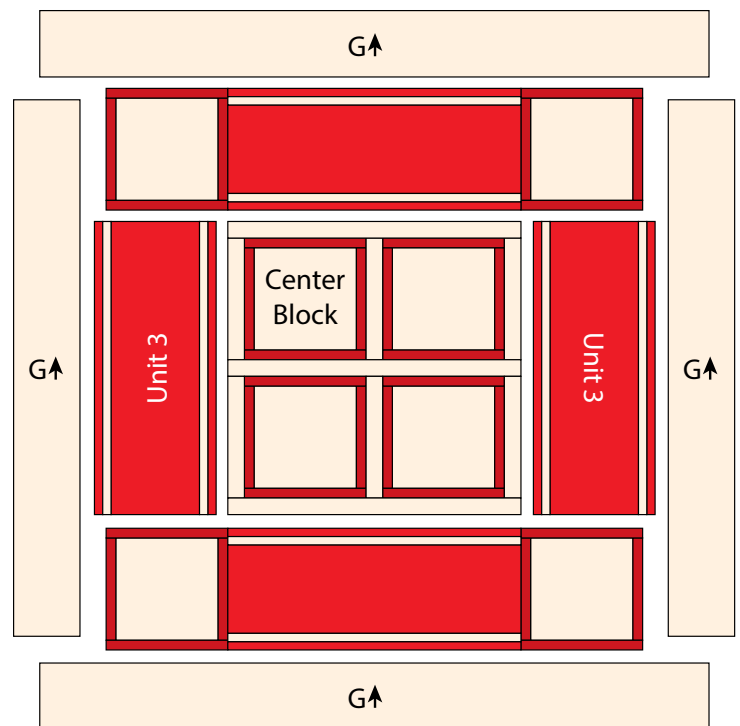


Fig. 7

Quilt Top Assembly

(Follow the Quilt Layout while assembling the quilt top.)

7. Sew (1) Unit 3 rectangle to each side of the Center Block.
8. Sew the Top Border and Bottom Border to the top and to the bottom of the Center Block.
9. Sew (1) 6 1/2" x 49" Fabric G strip to each side of the Center Block. Sew (1) 6 1/2" x 61" Fabric G strip to the top and to the bottom of the Center Block to make the quilt top.
10. Layer and quilt as desired.
11. Sew the (7) 2 1/2" x WOF Fabric D strips together, end to end with 45-degree seams, to make the binding. Fold this long strip in half lengthwise with wrong sides together and press.
12. Bind as desired.



Quilt Layout

Every effort has been made to ensure that all projects are error free. All the information is presented in good faith, however no warranty can be given nor results guaranteed as we have no control over the execution of instructions. Therefore, we assume no responsibility for the use of this information or damages that may occur as a result. When errors are brought to our attention, we make every effort to correct and post a revision as soon as possible. Please make sure to check www.henryglassfabrics.net for pattern updates prior to starting the project. We also recommend that you test the project prior to cutting for kits. Finally, all free projects are intended to remain free to you and are not for resale.