

## ~ Kim Diehl's Annual SIMPLE WHATNOTS CLUB 9 ~

### *Esther's Heirloom Shirtings* Ordering Summary for One Complete SWC9 Project Collection

Ordering summary includes binding for each project; backing requirements are not included. Yardages have been rounded up to the next 1/8 yard increment for cutting needs. **Please refer to the individual project directions when cutting and preparing kits.**



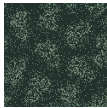
1597-30 ♦ 3/4 yard



1603-77 ♦ 1 yard



1608-11 ♦ 1 yard



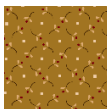
1597-77 ♦ 3/4 yard



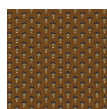
1603-88 ♦ 3/4 yard



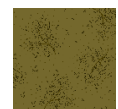
1608-44 ♦ 2/3 yard



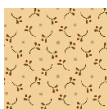
1598-40 ♦ 1/2 yard



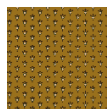
1604-33 ♦ 1 3/8 yards



1609-66 ♦ 1/2 yard



1598-44 ♦ 2/3 yard



1604-40 ♦ 1/2 yard



1609-88 ♦ 1/2 yard



1599-11 ♦ 3/4 yard



1604-44 ♦ 2/3 yard



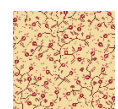
1610-22 ♦ 1/2 yard



1599-44 ♦ 2/3 yard



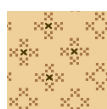
1605-22 ♦ 1 yard



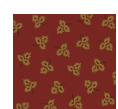
1610-44 ♦ 2/3 yard



1600-33 ♦ 1 yard



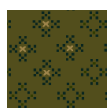
1606-44 ♦ 3/4 yard



1683-88 ♦ 1/2 yard



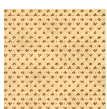
1601-66 ♦ 1/2 yard



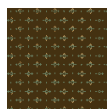
1606-66 ♦ 3/4 yard



1683-99 ♦ 2 yards



1602-44 ♦ 3/4 yard



1607-33 ♦ 3/4 yards



1684-30 ♦ 1/2 yard



1603-44 ♦ 2/3 yard



1607-88 ♦ 1 1/3 yards

