

Kim Diehl's Annual **SIMPLE WHATNOTS CLUB 11**  
Yardage Guidelines and **Right as Rain** Sku Numbers for Individual Projects

**Yardages are for planning and ordering purposes only; please refer to the published handouts (edited for accuracy) when preparing kits and cutting fabrics. For greater versatility in kitting the SWC projects, as well as reduced excess scraps for customers, Kim has created and included custom pre-cut sizes to better suit the needs of small quilts as noted below.**

Pre-cut Sizes:

Fat Quarters – 18" x 21" ♦ Fat Eighths – 9" x 21" ♦ Skinny Eighths – 4 1/2" x 21"  
Chubby Sixteenths – 9" x 10 1/2" ♦ Bitty Bricks – 4 1/2" x 10 1/2"  
Charm squares – 5" x 5"



**Close Quarters**

**Finished quilt size: 27 1/2" x 27 1/2"**

- ♦ 5 fat quarters of assorted cream prints (9842-40; 9843-40; 9844-40; 9845-40; 9846-40)
- ♦ 1 fat quarter of gray tossed blooms (9833-93)
- ♦ 24 bitty bricks of assorted prints (9829-33, 66; 9830-33, 66; 9831-30, 66, 77; 9832-88; 9834-88; 9835-404; 9836-88; 9837-30; 9838-33, 77; 9839-22; 9840-88; 9841-22, 66, 404; 9845-93; 9846-77; 9847-66, 77, 99)



**County Fair**

**Finished quilt size: 12 1/2" x 24 1/2"**

- ♦ 5 skinny eighths of assorted cream prints (9842-40; 9843-40; 9844-40; 9845-40; 9846-40)
- ♦ 24 chubby sixteenths of assorted prints (9829-33, 66; 9830-33, 66; 9831-30, 66, 77; 9832-88; 9833-93; 9834-88; 9835-404; 9836-88; 9837-30; 9838-33, 77; 9839-22; 9840-88; 9841-22, 66, 404; 9845-93; 9846-77; 9847-66, 77)
- ♦ 1 fat quarter of black pear orchard print (9847-99)



**Crossroads**

**Finished quilt size: 20 1/2" x 20 1/2"**

- ◆ 5/8 yard of cream polka dot clusters print (9843-40)
- ◆ 1 fat quarter of cranberry foulard print (9840-88)
- ◆ 1 fat eighth of teal Fleur de Lis print (9831-77)
- ◆ 3 chubby sixteenths of assorted cranberry prints (9832-88; 9834-88; 9836-88)
- ◆ 2 chubby sixteenths of assorted blue prints (9846-77; 9847-77)



**Hayride**

**Finished quilt size: 16 1/2" x 16 1/2"**

- ◆ 5 fat eighths of assorted cream prints (9842-40; 9843-40; 9844-40; 9845-40; 9846-40)
- ◆ 1 fat quarter of black pear orchard print (9847-99)
- ◆ 2 fat eighths of assorted brown prints (9830-33; 9838-33)
- ◆ 22 charm squares of assorted prints (9829-33, 66; 9830-66; 9831-30, 66, 77; 9832-88; 9833-93; 9834-88; 9835-404; 9836-88; 9837-30; 9838-77; 9839-22; 9840-88; 9841-22, 66, 404; 9845-93; 9846-77; 9847-66, 77)



**Hog Tied**

**Finished quilt size: 18 1/2" x 18 1/2"**

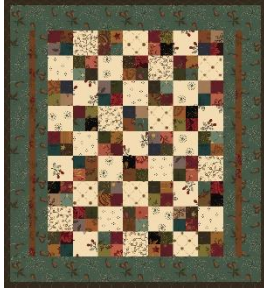
- ◆ 1 fat quarter of cream tiny pomegranate vines print (9842-40)
- ◆ 4 chubby sixteenths assorted cream prints (9843-40; 9844-40; 9845-40; 9846-40)
- ◆ 1/3 yard of black pear orchard print (9847-99)
- ◆ 1 fat eighth of green floral sprays print (9829-66)
- ◆ 23 charm squares of assorted prints (9829-33; 9830-33, 66; 9831-30, 66, 77; 9832-88; 9833-93; 9834-88; 9835-404; 9836-88; 9837-30; 9838-33, 77; 9839-22; 9840-88; 9841-22, 66, 404; 9845-93; 9846-77; 9847-66, 77)



**Keeping Room**

**Finished quilt size: 36 1/2" x 36 1/2"**

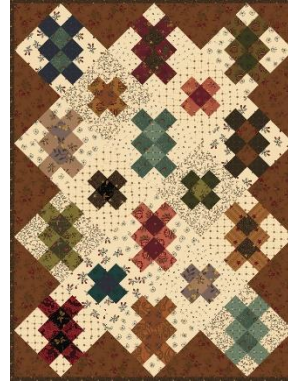
- ◆ 1 1/8 yards of cream sprigged pears print (9845-40)
- ◆ 5/8 yard of green pear orchard print (9847-66)
- ◆ 3/8 yard of cranberry harvest floral print (9836-88)
- ◆ 3/8 yard of gold ticking star stripe (9835-404)
- ◆ 1/3 yard of green floral (9829-66)
- ◆ 1/4 yard (not a FQ) of cranberry stair-stepped boxes print (9832-88)
- ◆ 1/4 yard (not a FQ) of gold swagged bouquets print (9841-404)



**Smarty Pants**

**Finished quilt size: 10 1/2" x 11 1/2"**

- ◆ 5 charm squares of assorted cream prints (9842-40; 9843-40; 9844-40; 9845-40; 9846-40)
- ◆ 1 fat eighth of brown clamshell print (9838-33)
- ◆ 1 chubby sixteenth of blue pear orchard print (9847-77)
- ◆ 1 bitty brick of chestnut floral (9829-33)
- ◆ 22 charm squares of assorted prints (9829-66; 9830-33, 66; 9831-30, 66, 77; 9832-88; 9833-93; 9834-88; 9835-404; 9836-88; 9837-30; 9838-77; 9839-22; 9840-88; 9841-22, 66, 404; 9845-93; 9846-77; 9847-66, 99)



**Twist and Turn**

**Finished quilt size: 17 1/2" x 23 1/4"**

- ◆ 5 fat eighths of assorted cream prints (9842-40; 9843-40; 9844-40; 9845-40; 9846-40)
- ◆ 1/2 yard of chestnut floral print (9829-33)
- ◆ 1 fat quarter of chocolate tulip vines print (9830-33)
- ◆ 23 bitty bricks of assorted prints (9829-66; 9830-66; 9831-30, 66, 77; 9832-88; 9833-93; 9834-88; 9835-404; 9836-88; 9837-30; 9838-33, 77; 9839-22; 9840-88; 9841-22, 66, 404; 9845-93; 9846-77; 9847-66, 77, 99)