

ANNUAL

SIMPLE WHATNOTS CLUB

Collection 15 • Love Struck

BY KIM DIEHL



▲ Social Climber
13¾" x 14½"

▼ Warm Hearted
33" x 33"

▶ Cute as a Button
18½" x 20½"



◀ Star Drifts
22" x 22"

▼ Pearls of Wisdom
12½" x 14½"



▲ Prairie Pretties
17½" x 17½"



▶ Box of Chocolates
17½" x 20½"

◀ Out for a Spin
12½" x 32½"



Henry Glass & Co., Inc.

Available
for order by shops
May 2025.
Delivery of fabric
December 2025.

LOVE STRUCK

Stitch-Along Programs



▼ True Love
28½" x 28½"

▲ Sew in Love
60½" x 60½"



Available for order
by shops May 2025.
Delivery of fabric
December 2025.



Henry Glass & Co., Inc.



In celebration of 15 collections of Kim Diehl's Simple Whatnots Club . . .

. . . **Henry Glass Fabrics** and Kim are pleased to offer not two, but three stitching programs, available exclusively to quilt shops! Participation in the **2026 Simple Whatnots Club 15 and Love Struck Stitch-Along Programs** is easy—simply purchase the complete line of Kim's **Love Struck** prints (**available for order May 2025, with delivery of fabric December 2025**) and pattern handouts for all three programs are yours. That's it!

Simple Whatnots Club 15 includes eight fun-to-stitch small quilts. Petite project sizes (typically 40" square or less) make these quilts approachable and easy to finish. Pattern handouts feature clear, concise project directions, and often include extra snippets of information providing sewing and quilting tips, tricks, and advice. Consider including these handouts in kits, offer monthly club meetings for group sewing time, or use them in workshops to increase traffic into your shop—we simply ask that you don't sell them individually.

To tailor the club to fit your shop's individual needs, we encourage you to create your own guidelines when offering the **Simple Whatnots Club** to your customers. Consider releasing all club projects at once, choose to feature the projects individually at approximately six-week intervals throughout the year, or develop your own unique format!

As always, for added variety, Kim will choose one Simple Whatnots mini and makes it big. Please watch for this "bonus biggie" on the Henry Glass website approximately mid summer.

Because many quilters enjoy QAL's, this year we're offering **two stitch-along programs** for even broader customer appeal. Kim's full-size **Love Struck Stitch-Along Quilt** and her re-colored and re-released mini **True Love sampler quilt** from Collection 1, will provide easy-to-follow directions, with each project divided into six doable installments. With the

purchase of Kim's complete collection of **Love Struck** prints, the complete sets of project directions are yours! Consider forming stitch-along clubs using the handouts for stitching sessions, include them in kits, or plan a series of workshops using the installments as a teaching guide. Again, we simply ask that the patterns aren't sold individually.

Yardage requirements for each program are pre-cut friendly and frequently include a variety of fat quarters, fat eighths, skinny eighths, chubby sixteenths, bitty bricks, and charm squares. For ordering purposes, **yardage estimates** for each program will be available on the Henry Glass website **May 2025. Please use the published handouts provided in December when preparing kits, rather than the ordering estimates.**

To simplify your participation in these stitching programs, as well as providing greater ease in restocking your inventory, Henry Glass is extending the length of time that the featured line will be available for purchase. Eventually all good things do come to an end, but the beauty of Kim's scrap-basket-style collections is that they're designed to be interchangeable and blend well with a variety of other prints. This means that as your on-hand inventory dwindles, it's easy to substitute other prints you have on hand.


Accessing the patterns is easy. Handouts for each program will be **available for download** on the Henry Glass website **December 2025** using a provided password—print and use them as often as needed!

For additional information regarding the fabrics and programs described above, please contact your local Henry Glass sales representative or your favorite distributor.



Henry Glass & Co., Inc.

www.henryglassfabrics.net



LOVE STRUCK Fabrics in the Collection



2283-44
Yellow Fancy Floral



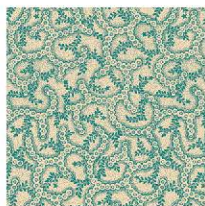
2284-55
Plum Leafy Blossoms



2284-66
Green Leafy Blossoms



2284-77
Navy Leafy Blossoms



2285-14
Aqua Pebbled Path



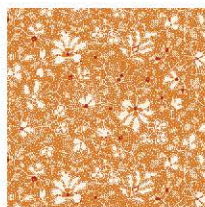
2285-34
Peach Pebbled Path



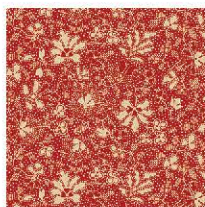
2286-33
Brown Tulip Toss



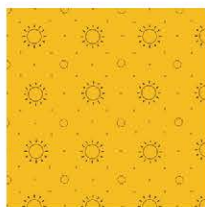
2286-88
Red Tulip Toss



2287-30
Orange Clover Patch



2287-88
Red Clover Patch



2288-44
Yellow Marmalade



2288-88
Red Marmalade



2289-33
Brown Daisy Wreathes



2289-77
Navy Daisy Wreathes



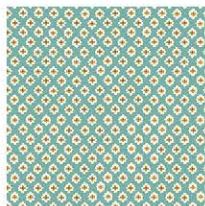
2290-77
Navy Dotted Stipple



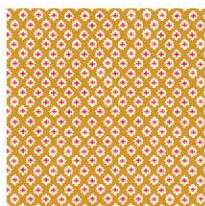
2291-30
Orange Potted Tulips



2291-66
Green Potted Tulips



2292-11
Aqua Fluffy Clouds



2292-44
Yellow Fluffy Clouds



2293-11
Aqua Flower Cart



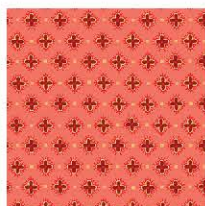
2293-66
Green Flower Cart



2294-22
Pink Nature Walk



2294-66
Green Nature Walk



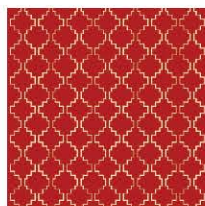
2295-22
Pink Hibiscus



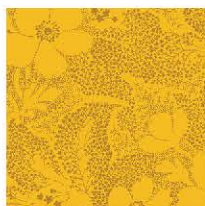
2295-66
Green Hibiscus



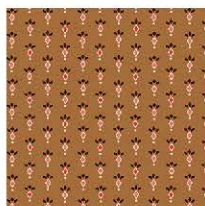
2296-33
Brown Prairie Blossoms



2297-88
Red Berry Bucket



2298-44
Yellow Endless Summer



2299-33
Brown Peppercorn
Medley



2300-55
Wine Mulled Pinch



2301-40
Cream Potted Tulips



2302-40
Cream Pebbled Path



2303-40
Cream Hydrangea
Sprays



2304-93
Gray Diamond
Clusters



2305-93
Gray Meadow Toile

