

ANNUAL

Simple Whatnots Club

Collection 14 • Scrap Basket Favorites

by Kim Diehl



▲ Star Crossed
18½" x 18½"



▼ Topsy Turvy 24½" x 24½" Block Party 18½" x 22½"



◀ Postage Stamp
23½" x 23½"



▼ Sugar Shaker
13½" x 27½"



▲ In a Pickle
15½" x 20"



▶ Early Bird
15" x 15"



◀ Cornerstones
15½" x 18"



Henry Glass & Co., Inc.

Scrap Basket Favorites Fabrics in the Collection



1500-44
Cheddar Gingham



1501-77
Blue Cabbage Rose



1502-77
Turquoise Triangle Vines



1503-77
Navy Twilight Sky



1504-99
Black Twinkle Stars



1505-88
Cranberry Dotted Shirting



1506-88
Cranberry Fancy Foulard



1507-77
Teal Tossed Pears



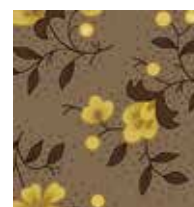
1508-77
Blue Acorn Branches



1509-66
Green Meshed Rings



1510-88
Cranberry Swirled Feathers



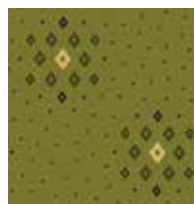
1511-93
Taupe-Gray Blossom Sprays



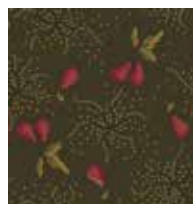
1512-55
Violet Lacey Blooms



1513-22
Pink Vintage Floral



1514-66
Green Geo Clusters



1515-66
Green Burnished Pear Sprigs



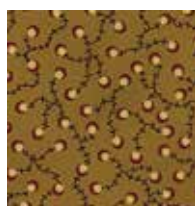
1516-66
Green Feathered Leaves



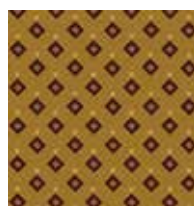
1517-33
Brown Pomegranate Patch



1518-66
Green Pressed Flowers



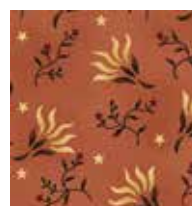
1519-404
Gold Briar Bramble



1520-404
Gold Double Diamonds



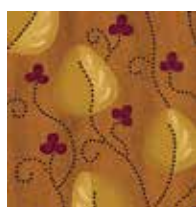
1521-11
Aqua Tossed Clover



1521-22
Pink Tossed Clover



1522-30
Orange Spiced Tea



1523-30
Orange Meandering Leaves



1524-30
Orange Birds and Toile



1525-55
Eggplant Etched Floral



1526-33
Brown Windswept Petals



1527-33
Brown Timeless Tulips



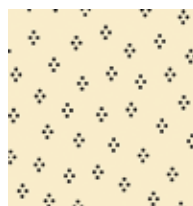
1528-88
Cranberry Looped Leaves



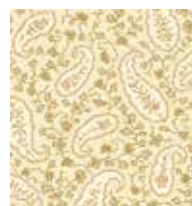
1529-88
Cranberry Buds and Berries



1530-40
Wheat Confetti Sprinkles



1531-40
Wheat Dancing Dots



1532-40
Wheat Heritage Paisley