

**~ SCATTER GARDEN ~**  
**Six-Part Stitch-Along Program Featuring**  
**Kim Diehl's *Scrap Basket Favorites* Collection**

**For ordering purposes**, the total yardage amount needed per sku to cut one complete quilt kit (including binding) is itemized below. To further aid in pricing kits, the actual pre-cut pieces and/or yardage amounts required for each sku are included as well. Backing requirement is not included.

**Please refer to the edited and published monthly handouts when cutting and preparing kits.**

Pre-cut Sizes:

Fat Quarters – 18" x 21" ♦ Fat Eighths – 9" x 21" ♦ Skinny Sixteenths – 4 1/2" x 21"  
 Chubby Sixteenths – 9" x 10 1/2" ♦ Bitty Bricks – 4 1/2" x 10 1/2" ♦ Charm Squares – 5" x 5"



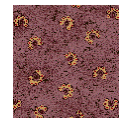
1500-44 - 1/2 yard

- ♦ 1 chubby sixteenth
- ♦ 2 fat eighths



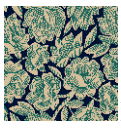
1506-88 – 1/2 yard

- ♦ 1 fat quarter



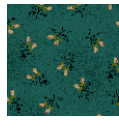
1512-55 – 1/4 yard

- ♦ 1 chubby sixteenth
- ♦ 1 fat eighth



1501-77 – 1/8 yard

- ♦ 1 bitty brick



1507-77 – 1/4 yard

- ♦ 2 fat eighths



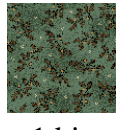
1513-22 – 1/4 yard

- ♦ 1 fat eighth



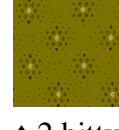
1502-77 – 1/4 yard

- ♦ 1 bitty brick
- ♦ 1 fat eighth



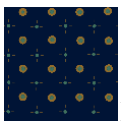
1508-77 – 7/8 yard

- ♦ 1 bitty brick
- ♦ 1 fat eighth
- ♦ 5/8 yard



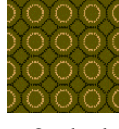
1514-66 – 1/4 yard

- ♦ 2 bitty bricks
- ♦ 1 chubby sixteenth



1503-77 – 1/4 yard

- ♦ 1 fat eighth



1509-66 – 1/4 yard

- ♦ 2 chubby sixteenths



1515-66 – 1/4 yard

- ♦ 2 bitty bricks
- ♦ 1 chubby sixteenth



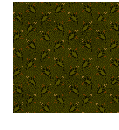
1504-99 – 1/4 yard

- ♦ 1 chubby sixteenth
- ♦ 1 fat eighth



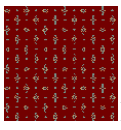
1510-88 – 1/4 yard

- ♦ 1 fat eighth



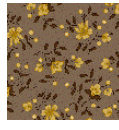
1516-66 – 1/8 yard

- ♦ 1 bitty brick



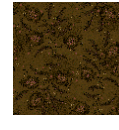
1505-88 – 1/4 yard

- ♦ 1 fat eighth



1511-93 – 5/8 yard

- ♦ 1 fat eighth
- ♦ 3/8 yard



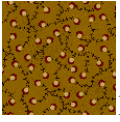
1517-33 – 1/4 yard

- ♦ 1 charm square
- ♦ 1 fat eighth



1518-66 – 1/4 yard

- ◆ 2 bitty bricks
- ◆ 2 chubby sixteenths



1519-404 – 1/4 yard

- ◆ 1 bitty brick
- ◆ 1 chubby sixteenth



1520-404 – 1/4 yard

- ◆ 1 bitty brick
- ◆ 1 chubby sixteenth



1521-11 – 1/2 yard

- ◆ 1 charm square
- ◆ 1 fat eighth
- ◆ 1 fat quarter



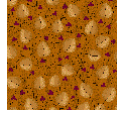
1521-22 – 3/4 yard

- ◆ 1 chubby sixteenth
- ◆ 1 fat quarter



1522-30 – 1/4 yard

- ◆ 1 fat eighth



1523-30 – 1/4 yard

- ◆ 1 fat eighth



1524-30 – 1/4 yard

- ◆ 1 chubby sixteenth



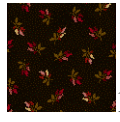
1525-55 – 1/4 yard

- ◆ 1 fat eighth



1526-33 – 1/4 yard

- ◆ 1 fat eighth



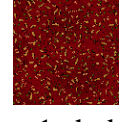
1527-33 – 7/8 yard

- ◆ 2 fat eighths
- ◆ 5/8 yard (binding)



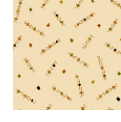
1528-88 – 1/8 yard

- ◆ 1 bitty brick



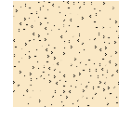
1529-88 – 1/4 yard

- ◆ 1 chubby sixteenth



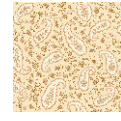
1530-40 – 1 7/8 yards

- ◆ 5 fat quarters
- ◆ 3/8 yard



1531-40 – 1 7/8 yards

- ◆ 5 fat quarters
- ◆ 3/8 yard



1532-40 – 1 7/8 yards

- ◆ 5 fat quarters
- ◆ 3/8 yard