

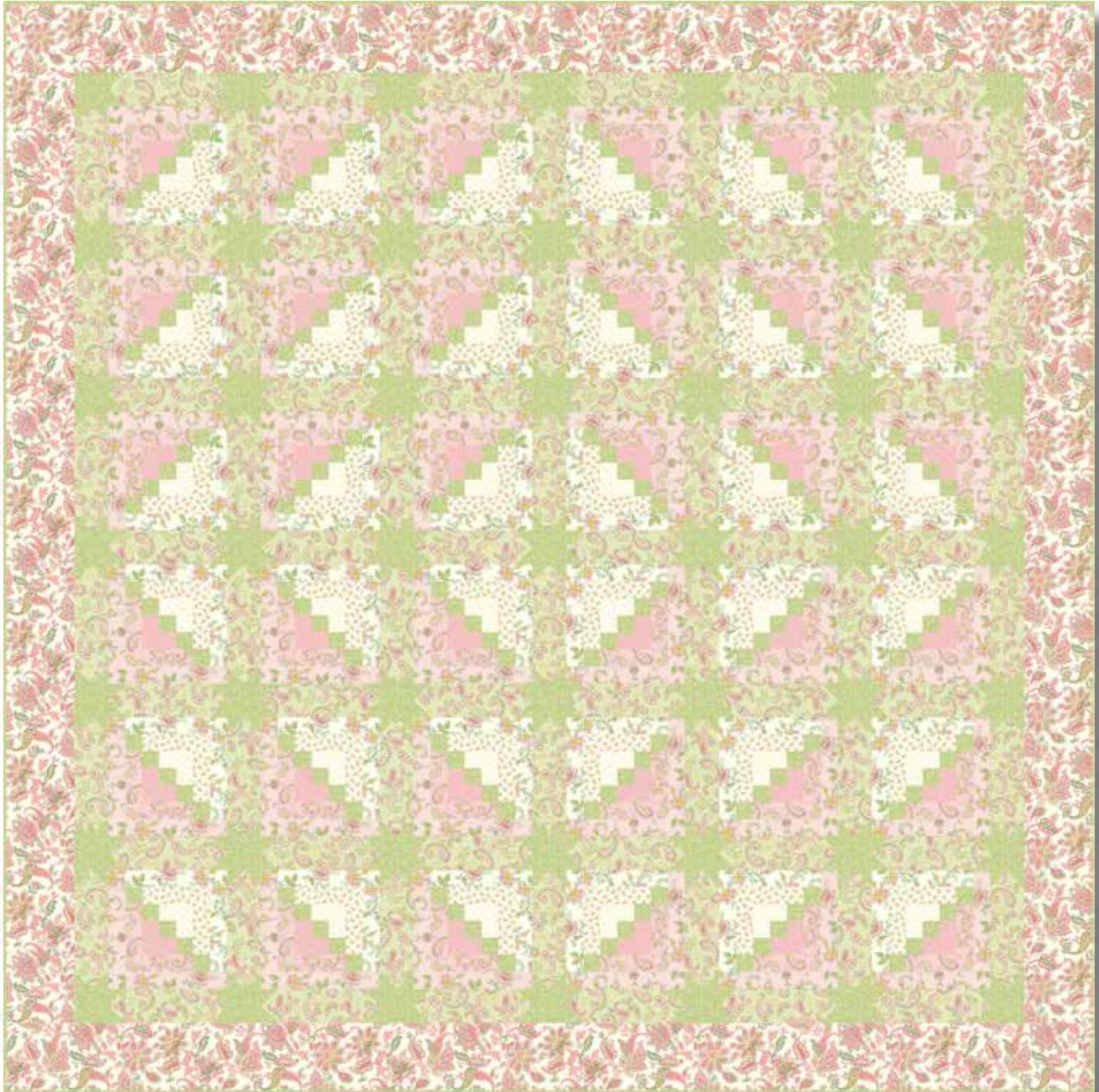
Renaissance Garden



••••• A Free Project Sheet •••••
••••• NOT FOR RESALE •••••

By Mary Jane Carey

Quilt Design by Mary Jane Carey



Quilt 1

Skill Level: Advanced Beginner



Henry Glass & Co., Inc.



facebook

Finished Quilt Size: 96" x 96"
49 West 37th Street, New York, NY 10018
tel: 212-686-5194 fax: 212-532-3525
Toll Free: 800-294-9495
www.henryglassfabrics.net

Please check our website for pattern updates before starting this project.

RENAISSANCE GARDEN

Finished Quilt Size: 96" x 96"

Quilt 1

Fabrics in the Collection



Floral Vine
Pink – 2625-22



Floral Vine
Cream – 2625-33



Paisley Fan
Pink – 2626-22



Paisley Toss
Pink – 2627-22



Paisley Toss
Cream – 2627-33



Paisley Toss
Green – 2627-66



Calico
Pink – 2628-22



Calico
Cream – 2628-33



Vine
Pink – 2629-22



Vine
Green – 2629-66



Dot
Pink – 2630-22



Dot
Cream/Pink – 2630-32



Main Floral
Pink – 2631-22



Main Floral
Cream – 2631-33



Main Floral
Green – 2631-66

RENAISSANCE GARDEN

Quilt 1

Page 1

Materials

2 ¾ yards	Vine - Green (A)	2629-66*
¾ yard	Dot - Pink (B)	2630-22
¾ yard	Dot - Cream/Pink (C)	2630-32
¾ yard	Calico - Cream (D)	2628-33
¾ yard	Paisley Toss - Pink (E)	2627-22
1 ¼ yards	Floral Vine - Pink (F)	2625-22
1 ⅛ yards	Floral Vine - Cream (G)	2625-33
3 yards	Paisley Toss - Green (H)	2627-66
2 yards	Main Floral - Cream (I)	2631-33
8 ¾ yards	Main Floral - Green (Backing)	2631-66

*Includes binding

Cutting Instructions

Please note: All strips are cut across the width of fabric (WOF) from selvage to selvage edge unless otherwise noted.

From the Vine - Green (A), cut:

- (5) 3 ½" x WOF strips. Sub-cut (49) 3 ½" squares.
- (25) 2" WOF strips. Sub-cut (516) 2" squares.
- (10) 2 ½" x WOF strips for the binding.

From the Dot - Pink (B), cut:

- (3) 2" x WOF strips. Sub-cut (36) 2" x 3 ½" strips.
- (2) 2" x WOF strips. Sub-cut (36) 2" squares.

From the Dot - Cream/Pink (C), cut:

- (3) 2" x WOF strips. Sub-cut (36) 2" x 3 ½" strips.
- (2) 2" x WOF strips. Sub-cut (36) 2" squares.

From the Calico - Cream (D), cut:

- (5) 2" x WOF strips. Sub-cut (36) 2" x 5" strips
- (6) 2" x WOF strips. Sub-cut (36) 2" x 6 ½" strips.

From the Paisley Toss - Pink (E), cut:

- (5) 2" x WOF strips. Sub-cut (36) 2" x 5" strips
- (6) 2" x WOF strips. Sub-cut (36) 2" x 6 ½" strips.

From the Floral Vine - Pink (F), cut:

- (9) 2" x WOF strips. Sub-cut (36) 2" x 9 ½" strips
- (12) 2" x WOF strips. Sub-cut (36) 2" x 11" strips.

From the Floral Vine - Cream (G), cut:

- (5) 2" x WOF strips. Sub-cut (36) 2" x 8" strips
- (9) 2" x WOF strips. Sub-cut (36) 2" x 9 ½" strips.

From the Paisley Toss - Green (H), cut:

- (28) 3 ½" x WOF strips. Sub-cut (84) 3 ½" x 11" strips.

From the Main Floral - Cream (I), cut:

- (5) 6 ½" x WOF strips. Sew the strips together end to end to with diagonal seams and cut (2) 6 ½" x 84 ½" strips.
- (5) 6 ½" x WOF strips. Sew the strips together end to end to with diagonal seams and cut (2) 6 ½" x 96 ½" strips.

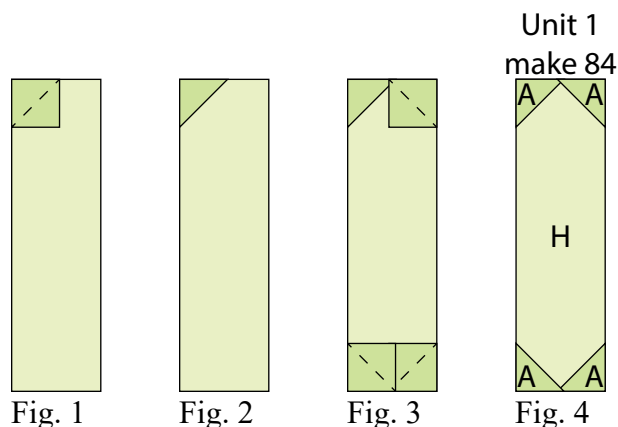
From the Main Floral - Green (Backing), cut:

- (3) 104" x WOF strips for the backing. Sew the strips together and trim to make the 104" x 104" back.

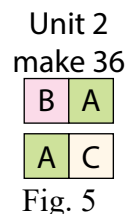
Block Assembly

Note: Pay attention to the unit orientations when assembling the various components. Use a ¼" seam allowance with right sides together (RST) unless otherwise noted.

1. Place (1) 2" Fabric A square on the top left corner of (1) 3 ½" x 11" Fabric H strip, right sides together (Fig. 1). Sew across the diagonal of the small square from the upper right corner to the lower left corner (Fig. 1). Flip open the triangle formed and press. Trim away the excess fabric from behind the triangle ¼" away from the sewn seam (Fig. 2).
2. Follow Figure 3 for the seam direction to add a 2" Fabric A square to each of the remaining corners of the 3 ½" x 11" Fabric H to make (1) Unit 1 strip (Fig. 4).
3. Repeat Steps 1-2 to make (84) Unit 1 strips total.



4. Sew (1) 2" Fabric B square to the left side of (1) 2" Fabric A square to make the top row. Sew (1) 2" Fabric A square to the left side of (1) 2" Fabric C square to make the bottom row. Sew the (2) rows together lengthwise to make (1) 3 ½" Unit 2 square (Fig. 5). Repeat to make (36) Unit 2 squares total.



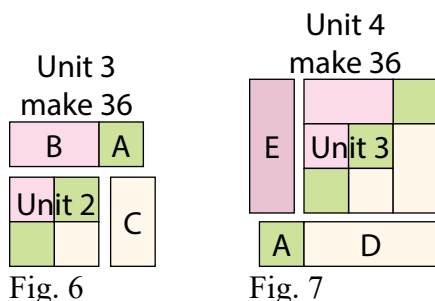
RENAISSANCE GARDEN

Quilt 1

Page 2

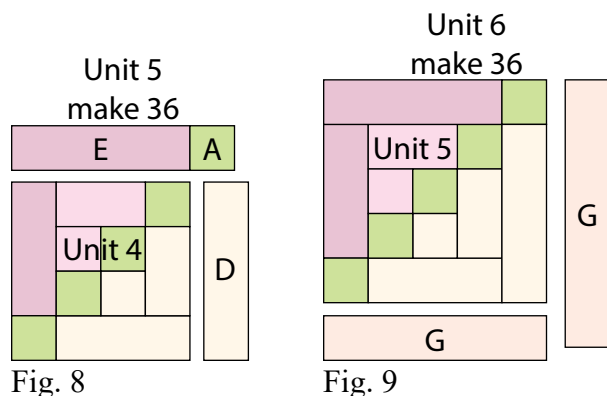
5. Sew (1) 2" x 3 1/2" Fabric C strip to the right side of (1) Unit 2 square. Sew (1) 2" Fabric A square to the right end of (1) 2" x 3 1/2" Fabric B strip. Sew the newly sewn strip to the top of Unit 2 square to make (1) 5" Unit 3 square (Fig. 6). Repeat to make (36) Unit 3 squares total.

6. Sew (1) 2" x 5" Fabric E strip to the left side of (1) Unit 3 square. Sew (1) 2" Fabric A square to the left end of (1) 2" x 5" Fabric D square. Sew the newly sewn strip to the bottom of (1) Unit 3 square to make (1) 6 1/2" Unit 4 square (Fig. 7). Repeat to make (36) Unit 4 squares total.

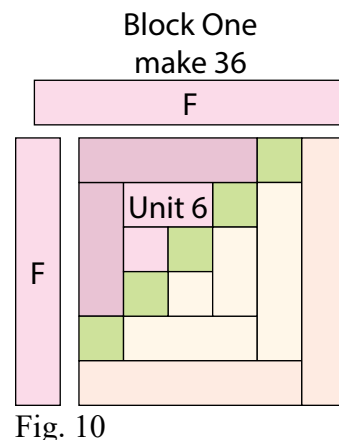


7. Sew (1) 2" x 6 1/2" Fabric D strip to the right side of (1) Unit 4 square. Sew (1) 2" Fabric A square to the right end of (1) 2" x 6 1/2" Fabric E strip. Sew the newly sewn strip to the top of (1) Unit 4 square to make (1) 8" Unit 5 square (Fig. 8). Repeat to make (36) Unit 5 squares total.

8. Sew (1) 2" x 8" Fabric G strip to the bottom of (1) Unit 5 square. Sew (1) 2" x 9 1/2" Fabric G strip to the right side of the Unit 5 square to make (1) 9 1/2" Unit 6 square (Fig. 9). Repeat to make (36) Unit 6 squares total.



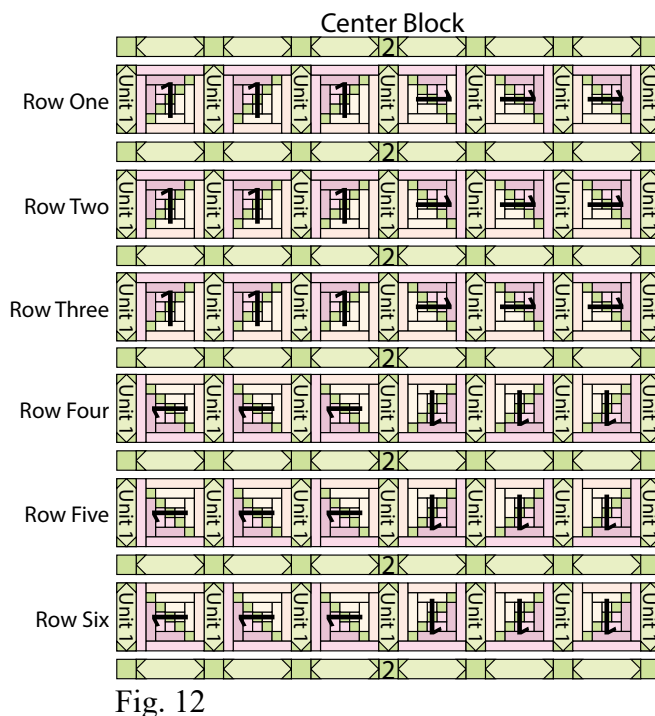
9. Sew (1) 2" x 9 1/2" Fabric F strip to the left side of (1) Unit 6 square. Sew (1) 2" x 11" Fabric F strip to the top of the Unit 6 square to make (1) 11" Block One square (Fig. 10). Repeat to make (36) Block One squares total.



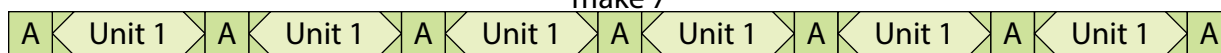
10. Sew (7) 3 1/2" Fabric A squares and (6) Unit 1 strips together end to end and alternating them from left to right to make (1) Block Two strip (Fig. 11 below). Repeat to make (7) Block Two strips total.

11. Sew together (7) Unit 1 strips and (6) Block One squares, alternating them from left to right, to make Row One (Fig. 12). Repeat to make Row Two through Row Six.

12. Sew together the (7) Block Two strips and (6) Pieced Rows, lengthwise and alternating them from top to bottom, to make the Center Block (Fig. 12).



Block Two make 7



RENAISSANCE GARDEN

Quilt 1

Page 3

Quilt Top Assembly

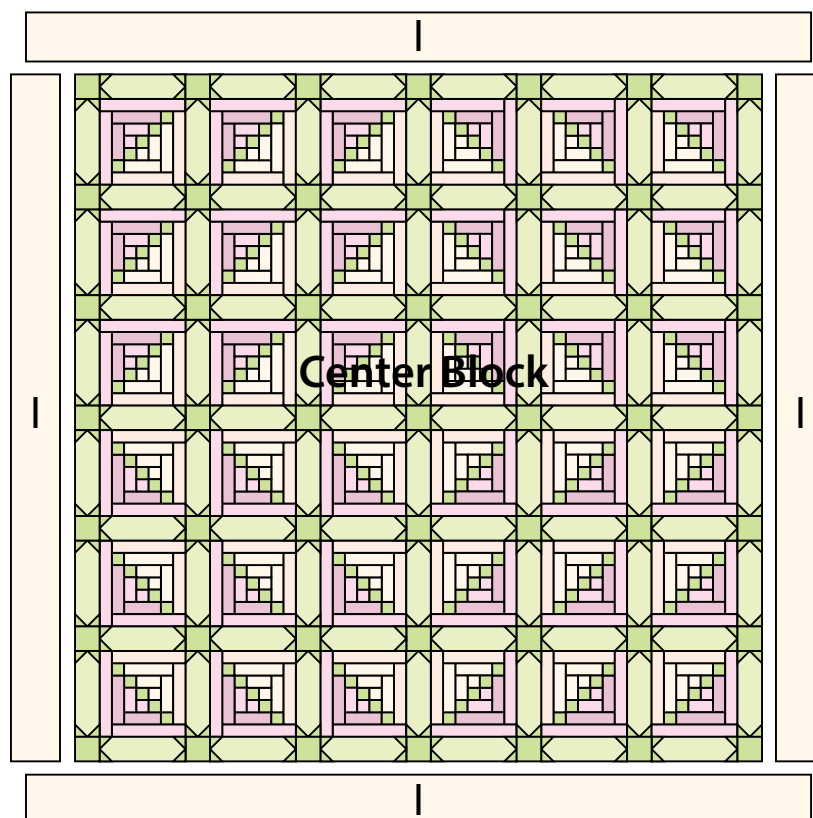
(Follow the Quilt Layout while assembling the quilt top.)

13. Sew (1) 6 ½" x 84 ½" Fabric I strip to each side of the Center Block. Sew (1) 6 ½" x 96 ½" Fabric I strip to the top and to the bottom of the Center Block to make the quilt top.

14. Layer and quilt as desired.

15. Sew the (10) 2 ½" x WOF Fabric A strips together, end to end with 45-degree seams, to make the binding. Fold this long strip in half lengthwise with wrong sides together and press.

16. Bind as desired.



Quilt Layout

Every effort has been made to ensure that all projects are error free. All the information is presented in good faith, however no warranty can be given nor results guaranteed as we have no control over the execution of instructions. Therefore, we assume no responsibility for the use of this information or damages that may occur as a result. When errors are brought to our attention, we make every effort to correct and post a revision as soon as possible. Please make sure to check www.henryglassfabrics.net for pattern updates prior to starting the project. We also recommend that you test the project prior to cutting for kits. Finally, all free projects are intended to remain free to you and are not for resale.