

# Pixies & Petals

• A Free Project Sheet •  
• NOT FOR RESALE •

*By Salt Meadow Studios*

Quilt Design by Heidi Pridemore



Quilt 1

Skill Level: Advanced Beginner



**Henry Glass & Co., Inc.**



facebook

Finished Quilt Size: 55" x 75"  
49 West 37th Street, New York, NY 10018  
tel: 212-686-5194 fax: 212-532-3525  
Toll Free: 800-294-9495  
[www.henryglassfabrics.net](http://www.henryglassfabrics.net)  
Please check our website for pattern updates before starting this project.



# PIXIES & PETALS

Quilt 1

Finished Quilt Size: 55" x 75"

## Fabrics in the Collection



Pixies and Daffodils  
Green/White – 188G-66



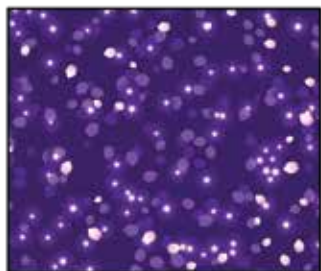
Tossed Spring Floral  
Aqua – 189G-11



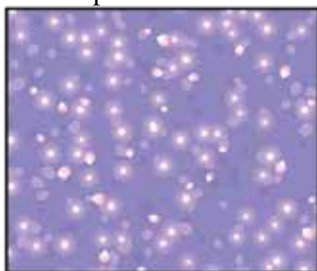
Tossed Pixies  
Purple – 190G-55



Mushroom Allover  
Purple – 191G-12



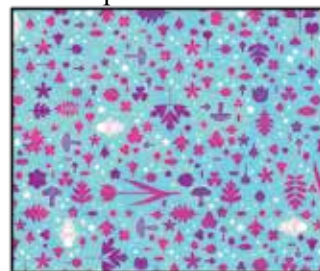
Tossed Petals  
Dark Purple – 192G-50



Tossed Petals  
Purple – 192G-55



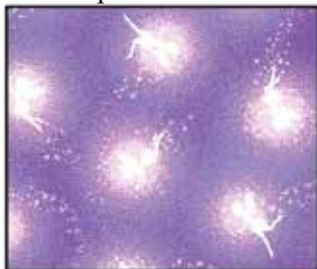
Pixies and Tulips  
Green/Purple – 193G-65



Floral Icons  
Aqua – 194G-12



Tossed Pixie Silhouettes  
Pink – 195G-22



Tossed Pixie Silhouettes  
Purple – 195G-55



Pixie Stripe  
Dark Purple – 196G-52



24 inch Pixie Panel  
Dark Purple – 197PG-55

## Select Fabric from Folio Basics



White on White  
7755-01



Powder Pink  
7755-20



Peony Pink  
7755-52

# PIXIES & PETALS

## Quilt 1

## Page 3

### Materials

|                       |   |          |
|-----------------------|---|----------|
| 1 panel               | 24 Inch Pixie Panel - Dark Purple (A)       | 197PG-55 |
| 1 $\frac{3}{8}$ yards | Folio Basics - Peony Pink (B)               | 7755-52* |
| 1 $\frac{1}{4}$ yards | Pixie Stripe - Dark Purple (C)              | 196G-52  |
| $\frac{1}{3}$ yard    | Tossed Pixies - Purple (D)                  | 190G-55  |
| $\frac{1}{4}$ yard    | Tossed Petals - Purple (E)                  | 192G-55  |
| $\frac{1}{4}$ yard    | Folio Basics - Powder Pink (F)              | 7755-20  |
| $\frac{1}{3}$ yard    | Mushroom Allover - Purple (G)               | 191G-12  |
| $\frac{3}{4}$ yard    | Tossed Petals - Dark Purple (H)             | 192G-50  |
| 1 $\frac{1}{4}$ yards | Tossed Spring Floral - Aqua (I)             | 189G-11  |
| 3 $\frac{1}{2}$ yards | Tossed Pixie Silhouettes - Purple (Backing) | 195G-55  |

\*Includes binding

### Cutting Instructions

Please note: All strips are cut across the width of fabric (WOF) from selvage to selvage edge unless otherwise noted.

#### From the 24 Inch Pixie Panel - Dark Purple (A):

- Fussy cut (1) 22  $\frac{1}{2}$ " x 42  $\frac{1}{2}$ " rectangle, centered on the panel.

#### From the Folio Basics - Peony Pink (B), cut:

- (2) 2" x 42  $\frac{1}{2}$ " WOF strips, piece as needed.
- (2) 2" x 25  $\frac{1}{2}$ " WOF strips.
- (4) 2" x WOF strips. Sew the strips together end to end with diagonal seams and cut (2) 2" x 62  $\frac{1}{2}$ " strips.
- (3) 2" x WOF strips. Sew the strips together end to end with diagonal seams and cut (2) 2" x 45  $\frac{1}{2}$ " strips.
- (1) 1  $\frac{1}{2}$ " x WOF strip. Sub-cut (4) 1  $\frac{1}{2}$ " x 9  $\frac{1}{2}$ " strips.
- (7) 2  $\frac{1}{2}$ " x WOF strips for the binding.

#### From the Pixie Stripe - Dark Purple (C), cut:

- (2) 9  $\frac{1}{2}$ " x 43  $\frac{1}{2}$ " Length of Fabric (LOF) strips.
- (2) 9  $\frac{1}{2}$ " x 23  $\frac{1}{2}$ " LOF strips.

#### From the Tossed Pixies - Purple (D):

- Fussy cut (2) 5" squares, each centered on a pixie.

#### From the Tossed Petals - Purple (E), cut:

- (2) 2  $\frac{3}{4}$ " x WOF strips. Sub-cut (16) 2  $\frac{3}{4}$ " squares.

#### From the Folio Basics - Powder Pink (F), cut:

- (1) 2  $\frac{3}{4}$ " x WOF strip. Sub-cut (8) 2  $\frac{3}{4}$ " x 5" strips.
- (1) 2  $\frac{3}{4}$ " x WOF strip. Sub-cut (8) 2  $\frac{3}{4}$ " squares.

#### From the Mushroom Allover - Purple (G), cut:

- (1) 9  $\frac{1}{2}$ " x WOF strip. Sub-cut (2) 9  $\frac{1}{2}$ " squares.

#### From the Tossed Petals - Dark Purple (H), cut:

- (7) 3" x WOF strips. Sub-cut (92) 3" squares.

#### From the Tossed Spring Floral - Aqua (I), cut:

- (7) 5  $\frac{1}{2}$ " x WOF strips. Sub-cut (48) 5  $\frac{1}{2}$ " squares.

### From the Tossed Pixie Silhouettes - Purple (Backing), cut:

- (2) 63" x WOF strips for the backing. Sew the strips together and trim to make the 63" x 83" back.

### Block Assembly

Note: The arrows in figures represent the fabric print direction. Pay attention to the fabric and unit orientations when assembling the various components. Use a  $\frac{1}{4}$ " seam allowance with right sides together (RST) unless otherwise noted.

1. Sew (1) 2" x 42  $\frac{1}{2}$ " Fabric B strip to each side of the 22  $\frac{1}{2}$ " x 42  $\frac{1}{2}$ " Fabric A rectangle. Sew (1) 2" x 25  $\frac{1}{2}$ " Fabric B strip to the top and to the bottom of the Center Block to make the Center Block (Fig. 1). Trim the block to measure 24  $\frac{1}{2}$ " x 44  $\frac{1}{2}$ ".

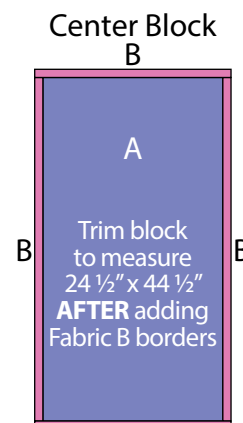


Fig. 1 B

2. Place (1) 2  $\frac{3}{4}$ " Fabric E square on the left side of (1) 2  $\frac{3}{4}$ " x 5" Fabric F strip, right sides together (Fig. 2). Sew across the diagonal of the square from the upper right corner to the lower left corner (Fig. 2). Flip open the triangle formed and press. Trim away the excess fabric from behind the triangle, leaving a  $\frac{1}{4}$ " seam allowance (Fig. 3).



Fig. 2

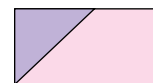


Fig. 3

3. Place another 2  $\frac{3}{4}$ " Fabric E square on the right side of the 2  $\frac{3}{4}$ " x 5" Fabric F strip, right sides together (Fig. 4). Sew across the diagonal of the square from the upper left corner to the lower right corner (Fig. 4). Flip open the triangle formed and press. Trim away the excess fabric from behind the triangle, leaving a  $\frac{1}{4}$ " seam allowance to make (1) Unit 1 strip (Fig. 5).

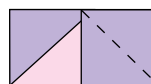


Fig. 4

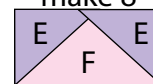
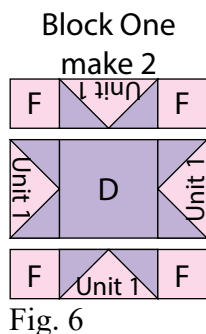


Fig. 5

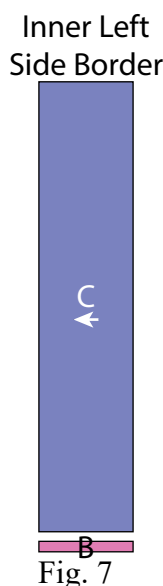
4. Repeat Steps 2-3 to make (8) Unit 1 strips total.

Unit 1  
make 8

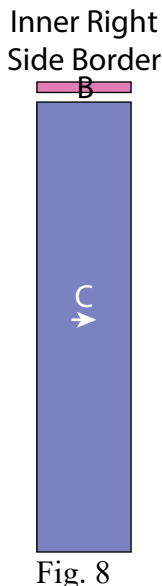
5. Sew (1)  $2\frac{3}{4}$ " Fabric F square to each end of (1) Unit 1 strip to make the top row. Repeat to make the bottom row. Sew (1) Unit 1 strip to each side of (1) 5" Fabric D square to make the middle row. Sew together the (3) rows lengthwise to make (1)  $9\frac{1}{2}$ " Block One square (Fig. 6). Repeat to make a second Block One square.



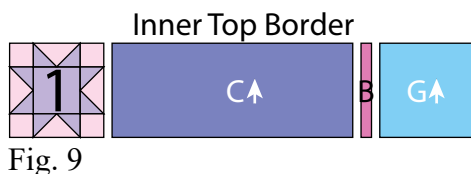
6. Sew (1)  $1\frac{1}{2}$ " x  $9\frac{1}{2}$ " Fabric B strip to the bottom of (1)  $9\frac{1}{2}$ " x  $43\frac{1}{2}$ " Fabric C strip to make the Inner Left Side Border (Fig. 7).



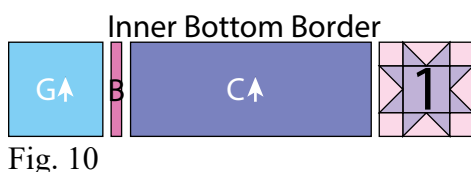
7. Sew (1)  $1\frac{1}{2}$ " x  $9\frac{1}{2}$ " Fabric B strip to the top of (1)  $9\frac{1}{2}$ " x  $43\frac{1}{2}$ " Fabric C strip to make the Inner Right Side Border (Fig. 8).



8. Sew together (1) Block One square, (1)  $9\frac{1}{2}$ " x  $23\frac{1}{2}$ " Fabric C strip, (1)  $1\frac{1}{2}$ " x  $9\frac{1}{2}$ " Fabric B strip and (1)  $9\frac{1}{2}$ " Fabric G square, in that order from left to right, to make the Inner Top Border (Fig. 9).



9. Sew together (1)  $9\frac{1}{2}$ " Fabric G square, (1)  $1\frac{1}{2}$ " x  $9\frac{1}{2}$ " Fabric B strip, (1)  $9\frac{1}{2}$ " x  $23\frac{1}{2}$ " Fabric C strip and (1) Block One square, in that order from left to right, to make the Inner Bottom Border (Fig. 10).



10. Place (1) 3" Fabric H square on the bottom left corner of (1)  $5\frac{1}{2}$ " Fabric I square, right sides together (Fig. 11). Sew across the diagonal of the smaller square from the upper left corner to the lower right corner (Fig. 11). Flip open the triangle formed and press. Trim away the excess fabric from behind the triangle  $\frac{1}{4}$ " away from the sewn seam (Fig. 12).

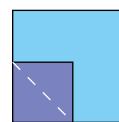


Fig. 11

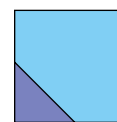


Fig. 12

11. Follow Figure 13 for the seam direction to add a 3" Fabric H square to the lower right corner of the  $5\frac{1}{2}$ " Fabric I square to make (1) Unit 2 square (Fig. 14).

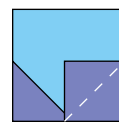


Fig. 13

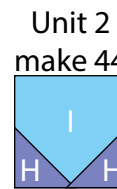


Fig. 14

13. Place (1) 3" Fabric H square on the bottom right corner of (1)  $5\frac{1}{2}$ " Fabric I square, right sides together (Fig. 15). Sew across the diagonal of the smaller square from the upper right corner to the lower left corner (Fig. 15). Flip open the triangle formed and press. Trim away the excess fabric from behind the triangle  $\frac{1}{4}$ " away from the sewn seam to make (1) Unit 3 square (Fig. 16). Repeat to make (4) Unit 3 squares total.

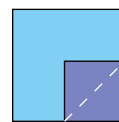


Fig. 15

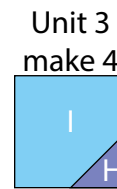


Fig. 16

14. Sew together (13) Unit 2 squares to make (1) Outer Side Border (Fig. 17). Repeat to make a second Outer Side Border.

Outer Side Border  
make 2



Fig. 17

15. Sew together (9) Unit 2 squares. Sew (1) Unit 3 square to each end of the newly sewn strip to make the Outer Top Border (Fig. 18). Repeat to make the Outer Bottom Border.

Outer Top/Bottom Border  
make 2



Fig. 18

### Quilt Top Assembly

(Follow the *Quilt Layout* while assembling the quilt top.)

16. Sew the Inner Left Side Border and Inner Right Side Border to the left and to the right sides of the Center Block.
17. Sew the Inner Top Border and Inner Bottom Border to the top and to the bottom of the Center Block.

18. Sew (1) 2" x 62 1/2" Fabric B strip to each side of the Center Block. Sew (1) 2" x 45 1/2" Fabric B strip to the top and to the bottom of the Center Block.

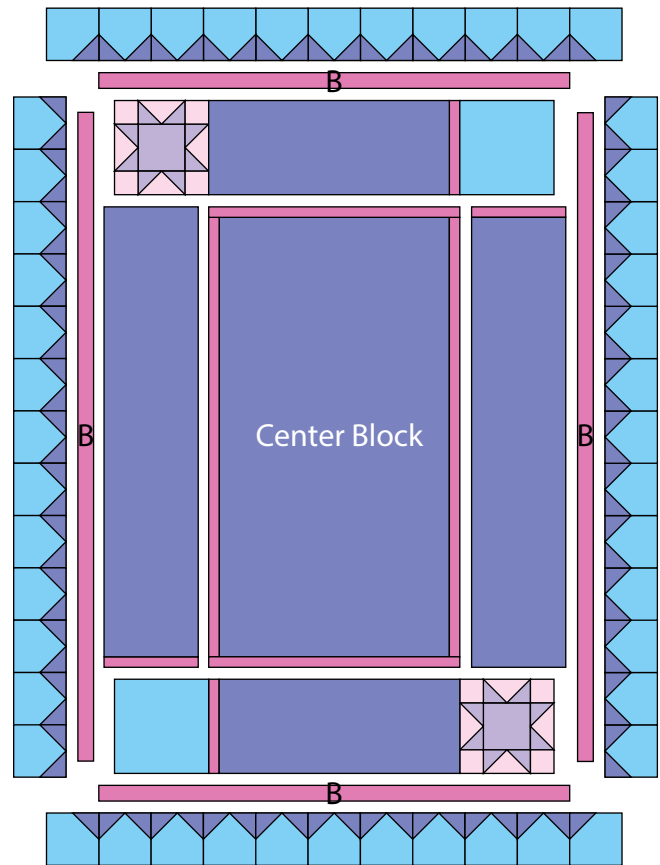
19. Sew (1) Outer Side Border to each side of the Center Block.

20. Sew the Outer Top Border and Outer Bottom Border to the top and to the bottom of the Center Block to make the quilt top.

21. Layer and quilt as desired.

22. Sew the (7) 2 1/2" x WOF Fabric B strips together, end to end with 45-degree seams, to make the binding. Fold this long strip in half lengthwise with wrong sides together and press.

23. Bind as desired.



Quilt Layout

Every effort has been made to ensure that all projects are error free. All the information is presented in good faith, however no warranty can be given nor results guaranteed as we have no control over the execution of instructions. Therefore, we assume no responsibility for the use of this information or damages that may occur as a result. When errors are brought to our attention, we make every effort to correct and post a revision as soon as possible. Please make sure to check [www.henryglassfabrics.net](http://www.henryglassfabrics.net) for pattern updates prior to starting the project. We also recommend that you test the project prior to cutting for kits. Finally, all free projects are intended to remain free to you and are not for resale.