

My Neighborhood

••••• A Free Project Sheet •••••
••••• NOT FOR RESALE •••••

By Anni Downs



Quilt Design by Anni Downs

Quilt 1

Skill Level: Intermediate

 Henry Glass & Co., Inc.



[facebook](#)

Finished Quilt Size: 57" x 57"
49 West 37th Street, New York, NY 10018
tel: 212-686-5194 fax: 212-532-3525
Toll Free: 800-294-9495
www.henryglassfabrics.net
Please check our website for pattern updates before starting this project.

MY NEIGHBORHOOD

Quilt 1

Finished Quilt Size: 57" x 57"

Fabrics in the Collection



Neighborhood Panel - Cream
2632P-4



Neighborhood Panel - Taupe
2632P-39



Neighborhood Panel - Sage
2632P-66



Row Houses - Taupe
2633-39



Row Houses - Sage
2633-66



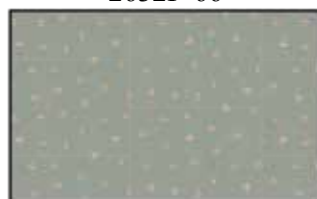
Town Toss - Cream
2634-4



Town Toss - Sage
2634-66



Daisy - Cream
2635-4



Daisy - Light Blue
2635-17



Daisy - Taupe
2635-39



Spots - Cream
2636-4



Spots - Light Blue
2636-11



Spots - Peach
2636-35



Geo Dot - Light Blue
2637-17



Geo Dot - Plum
2637-58



Posey Dot - Cream
2638-4



Posey Dot - Light Blue
2638-17



Posey Dot - Plum
2638-58

Materials

| | | |
|-----------|--------------------------------|----------|
| 1 panel | Neighborhood Panel - Taupe (A) | 2632P-39 |
| 1 yard | Posey Dot - Plum (B) | 2638-58 |
| ¼ yard | Town Toss - Cream (C) | 2634-4 |
| ⅛ yard | Town Toss - Sage (D) | 2634-66 |
| ¾ yard | Daisy - Cream (E) | 2635-4 |
| ⅔ yard | Daisy - Light Blue (F) | 2635-17* |
| ¼ yard | Daisy - Taupe (G) | 2635-39 |
| ⅓ yard | Spots - Cream (H) | 2636-4 |
| ⅓ yard | Spots - Light Blue (I) | 2636-11 |
| ¼ yard | Spots - Peach (J) | 2636-35 |
| ⅓ yard | Geo Dot - Light Blue (K) | 2637-17 |
| ¼ yard | Geo Dot - Plum (L) | 2637-58 |
| ⅓ yard | Posey Dot - Cream (M) | 2638-4 |
| ¼ yard | Posey Dot - Light Blue (N) | 2638-17 |
| 1 ½ yards | Row Houses - Sage (O) | 2633-66 |
| 3 ¾ yards | Town Toss - Cream (Backing) | 2634-4 |

*Includes binding

Cutting Instructions

Please note: All strips are cut across the width of fabric (WOF) from selvage to selvage edge unless otherwise noted.

From the Neighborhood Panel - Taupe (A):

- Fussy cut (25) 4 ¾" squares, each centered on a scene.

From the Posey Dot - Plum (B), cut:

- (5) 3 ⅞" x WOF strips. Sub-cut (50) 3 ⅞" squares. Cut the squares across (1) diagonal to make (100) 3 ⅞" triangles.
- (1) 2 ½" x WOF strip. Sub-cut (12) 2 ½" squares.
- (6) 1 ½" x WOF strips for the inner border.

From the Town Toss - Cream (C), cut:

- (2) 2 ½" x WOF strips. Sub-cut (24) 2 ½" squares.

From the Town Toss - Sage (D), cut:

- (1) 2 ½" x WOF strip. Sub-cut (12) 2 ½" squares.

From the Daisy - Cream (E), cut:

- (2) 9 ¾" x WOF strips. Sub-cut (5) 9 ¾" squares and (2) 5 ⅛" squares. Cut the 9 ¾" squares across both diagonals to make (20) 9 ¾" triangles. Cut the 5 ⅛" squares across (1) diagonal to make (4) 5 ⅛" triangles.
- (1) 2 ½" x WOF strip. Sub-cut (12) 2 ½" squares.

From the Daisy - Light Blue (F), cut:

- (2) 2 ½" x WOF strips. Sub-cut (24) 2 ½" squares.
- (6) 2 ½" x WOF strips for the binding.

From the Daisy - Taupe (G), cut:

- (2) 2 ½" x WOF strips. Sub-cut (28) 2 ½" squares.

From the Spots - Cream (H), cut:

- (3) 2 ½" x WOF strips. Sub-cut (36) 2 ½" squares.

From the Spots - Light Blue (I), cut:

- (3) 2 ½" x WOF strips. Sub-cut (36) 2 ½" squares.

From the Spots - Peach (J), cut:

- (2) 2 ½" x WOF strips. Sub-cut (24) 2 ½" squares.

From the Geo Dot - Light Blue (K), cut:

- (3) 2 ½" x WOF strips. Sub-cut (36) 2 ½" squares.

From the Geo Dot - Plum (L), cut:

- (2) 2 ½" x WOF strips. Sub-cut (24) 2 ½" squares.

From the Posey Dot - Cream (M), cut:

- (3) 2 ½" x WOF strips. Sub-cut (36) 2 ½" squares.

From the Posey Dot - Light Blue (N), cut:

- (2) 2 ½" x WOF strips. Sub-cut (24) 2 ½" squares.

From the Row Houses - Sage (O), cut:

- (6) 2 ½" x 54" LOF strips for the outer border.

From the Town Toss - Cream (Backing), cut:

- (2) 65" x WOF strips for the backing. Sew the strips together and trim to make the 65" x 65" back.

Block Assembly

Note: The arrows in figures represent the fabric print direction. Pay attention to the fabric and unit orientations when assembling the various components.

1. Sew (1) 3 ⅞" Fabric B triangle to each of the (4) sides of (1) 4 ¾" Fabric A square to make (1) Block One square (Fig. 1). Repeat to make (25) Block One squares total.

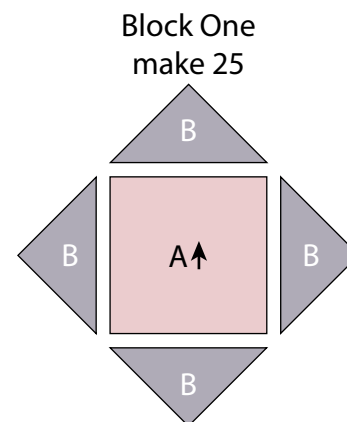


Fig. 1

2. Follow Figure 2 and sew together (9) assorted 2 1/2" squares into a 3 x 3 matrix to make (1) Block Two square (Fig. 2). Repeat to make (12) Block Two squares total.

3. Repeat Step 2 and refer to Figures 3-4 for fabric identification and location to make (12) Block Three squares and (12) Block Four squares.



Fig. 2



Fig. 3

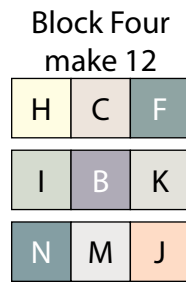


Fig. 4

4. Sew (1) 9 3/4" Fabric E triangle to each side of (1) Block Two square. Sew (1) 5 1/4" Fabric E triangle to the top of the Block Two square to make Row One (Fig. 5).

5. Sew together (1) 9 3/4" Fabric E triangle, (1) Block Four square, (1) Block One square, (1) Block Three square and (1) 9 3/4" Fabric E triangle, in that order from left to right, to make Row Two (Fig. 5).

6. Refer to Figure 5 for component identification, location and orientation to make Row Three through Row Eleven.

7. Sew the (11) Rows together, in numerical order, to make the Center Block (Fig. 5).

Quilt Top Assembly

(Follow the Quilt Layout while assembling the quilt top.)

8. Sew together (3) 1 1/2" x WOF Fabric B strips end to end with diagonal seams. Measure the sides of the Center Block and cut (2) strips of that length from the Fabric B strips. Sew (1) newly cut strip to each side of the Center Block.

9. Sew together (3) 1 1/2" x WOF Fabric B strips end to end with diagonal seams. Measure the top and bottom of the Center Block and cut (2) strips of that length from the Fabric B strips. Sew the newly cut strips to the top and to the bottom of the Center Block.

10. Sew (3) 2 1/2" x WOF Fabric O strips together end to end with diagonal seams. Measure the sides of the Center Block and cut (2) strips to that length. Sew (1) newly cut strip to each side of the Center Block.

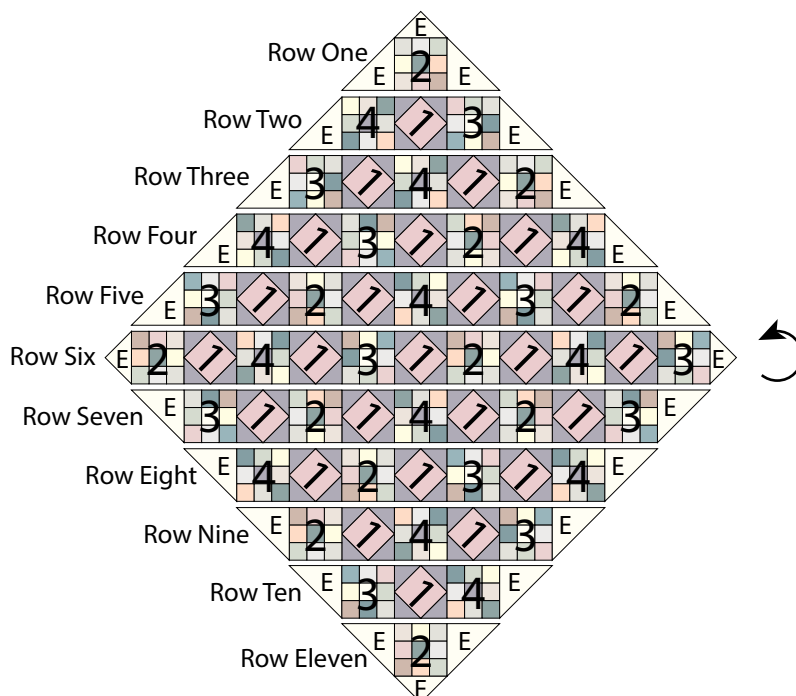
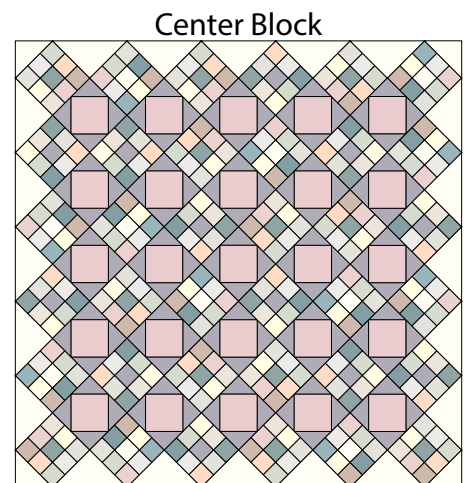


Fig. 5



MY NEIGHBORHOOD

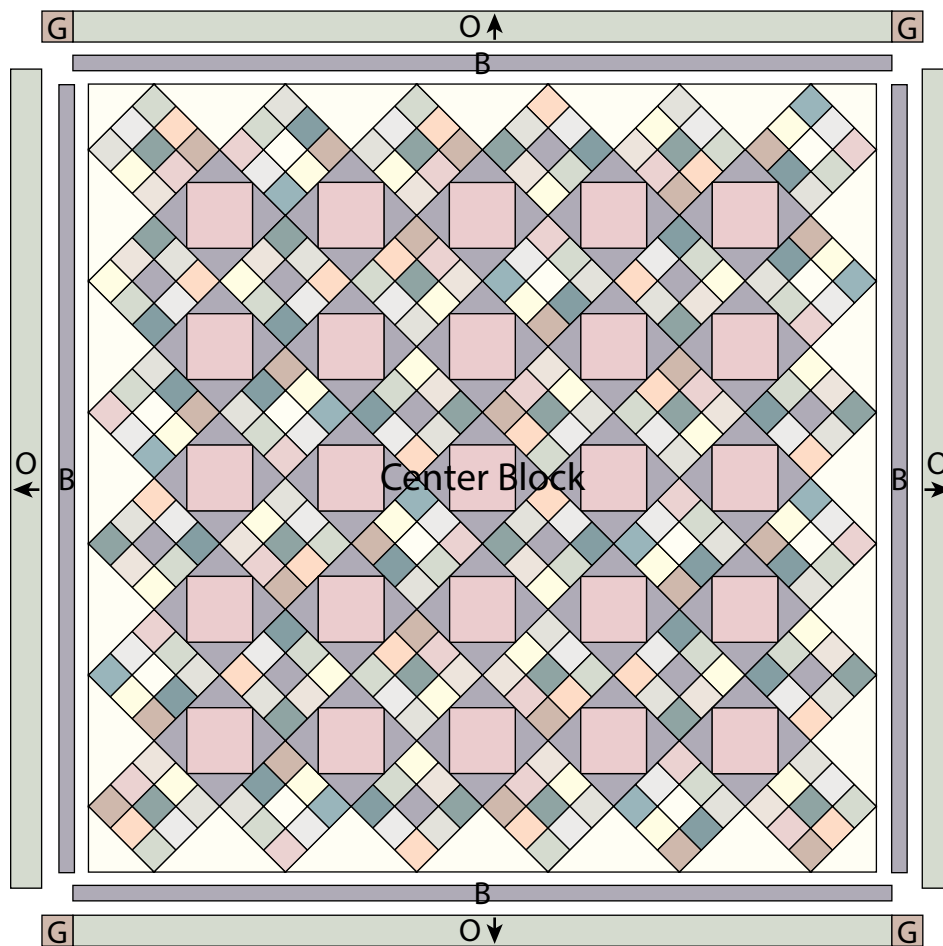
Quilt 1

11. Sew (3) 2 ½" x WOF Fabric O strips together end to end with diagonal seams. Cut (2) strips to the same length as in Step 9. Sew (1) 2 ½" Fabric G square to each end of the (2) newly cut strips. Sew the strips to the top and to the bottom of the Center Block to make the quilt top.

12. Layer and quilt as desired.

13. Sew the (6) 2 ½" x WOF Fabric F strips together, end to end with 45-degree seams, to make the binding. Fold this long strip in half lengthwise with wrong sides together and press.

14. Bind as desired.



Quilt Layout

Every effort has been made to ensure that all projects are error free. All the information is presented in good faith, however no warranty can be given nor results guaranteed as we have no control over the execution of instructions. Therefore, we assume no responsibility for the use of this information or damages that may occur as a result. When errors are brought to our attention, we make every effort to correct and post a revision as soon as possible. Please make sure to check www.henryglassfabrics.net for pattern updates prior to starting the project. We also recommend that you test the project prior to cutting for kits. Finally, all free projects are intended to remain free to you and are not for resale.