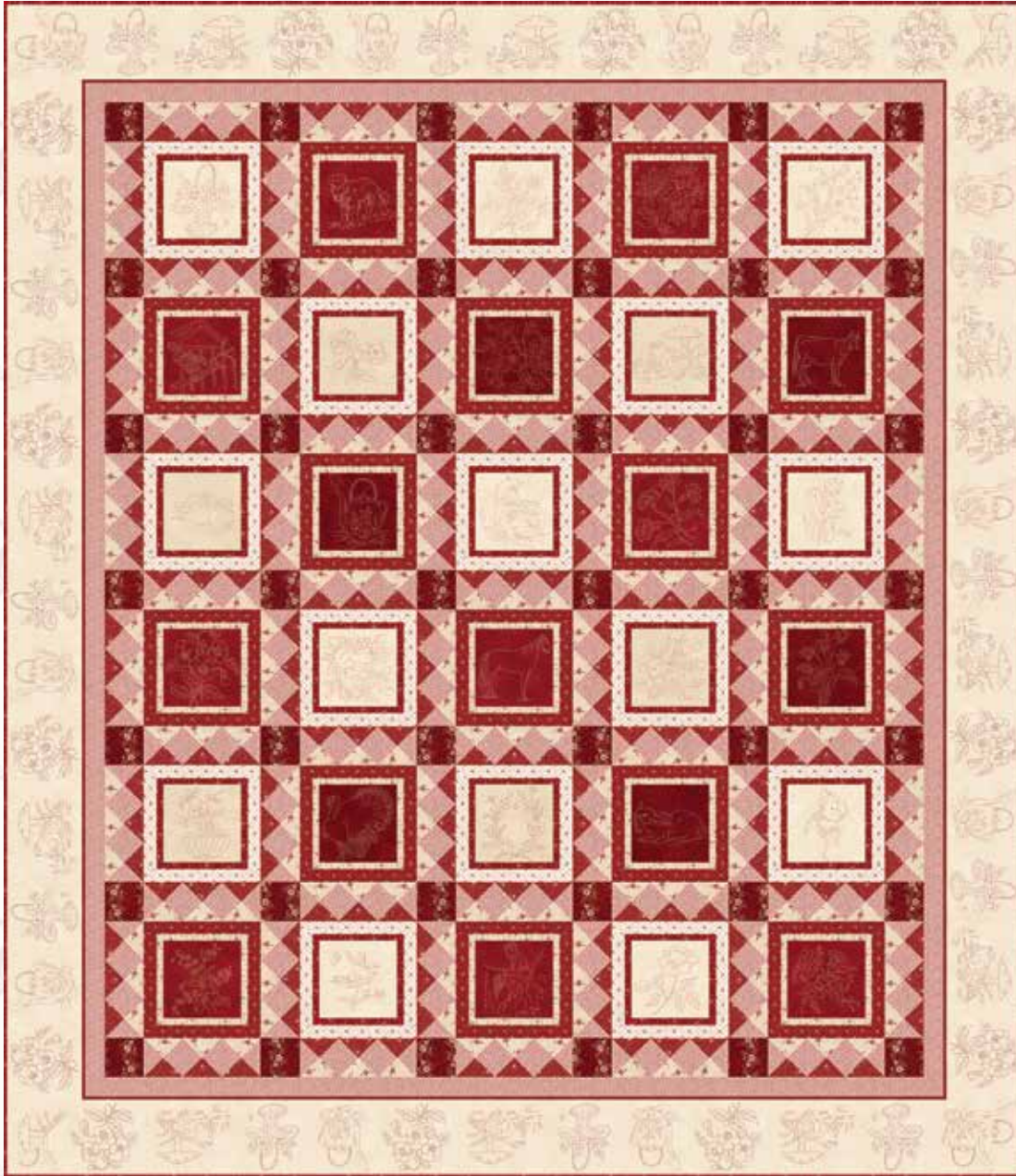


# Memories in Redwork

• A Free Project Sheet  
• NOT FOR RESALE


*By Stacy West of Buttermilk Basin*

Quilt Design by Heidi Pridemore



Quilt 2

Skill Level: Advanced Beginner

 Henry Glass & Co., Inc.



facebook

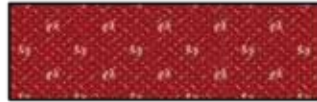
Finished Quilt Size: 78" x 90"  
49 West 37th Street, New York, NY 10018  
tel: 212-686-5194 fax: 212-532-3525  
Toll Free: 800-294-9495  
[www.henryglassfabrics.net](http://www.henryglassfabrics.net)  
Please check our website for pattern updates before starting this project.

# MEMORIES IN REDWORK Quilt 2

## Fabrics in the Collection



Twist Tie  
Pale Cream – 2944-33



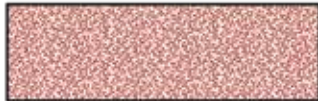
Twist Tie  
Scarlet – 2944-88



Floral and Honey Comb  
Scarlet – 2945-88



Floral and Honey Comb  
Dark Red – 2945-89



Tiny Coral  
Pale Cream – 2946-33



Tiny Coral  
Sand – 2946-36



Foulard Stripe  
Sand – 2947-36



Foulard Stripe  
Scarlet – 2947-88



Pin Stars  
Sand – 2948-36



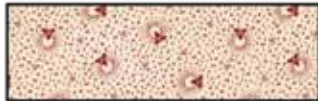
Pin Stars  
Scarlet – 2948-88



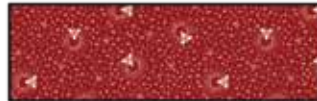
Car Novelty  
Pale Cream – 2949-33



Car Novelty  
Sand – 2949-36



Triangle Toss  
Light Cream – 2950-34



Triangle Toss  
Scarlet – 2950-88



Floral Bud Toss  
Sand – 2951-36



Floral Bud Toss  
Scarlet – 2951-88



Floral Vine Stripe  
Scarlet – 2952-88



Floral Vine Stripe  
Dark Red – 2952-89



Horse Shoe Stripe  
Sand – 2953-36



Horse Shoe Stripe  
Scarlet – 2953-88



Border Stripe  
Cream – 2954-33



Tossed Allover Novelty  
Cream – 2957-33



Tossed Allover Novelty  
Scarlet – 2957-88



Embroidery Block Panel  
Scarlet – 2955P-88



Grandmas Quilt Panel  
Scarlet – 2956P-88

### Materials

1 panel	Embroidery Block Panel - Scarlet (A)	2955P-88
1 1/3 yards	Horse Shoe Stripe - Scarlet (B)	2953-88*
2/3 yard	Twist Tie - Pale Cream (C)	2944-33
2/3 yard	Horse Shoe Stripe - Sand (D)	2953-36
2/3 yard	Twist Tie - Scarlet (E)	2944-88
7/8 yard	Triangle Toss - Scarlet (F)	2950-88
2 yards	Tiny Coral - Pale Cream (G)	2946-33
7/8 yard	Floral Bud Toss - Sand (H)	2951-36
1/2 yard	Floral Vine Strip - Dark Red (I)	2952-89
2 3/4 yards	Border Stripe - Cream (J)	2954-33
7 1/4 yards	Tossed Allover Novelty - Scarlet (Backing)	2957-88

\*Includes binding

### Cutting Instructions

*Please note: All strips are cut across the width of fabric (WOF) from selvage to selvage unless otherwise noted.*

#### From the Embroidery Block Panel - Scarlet (A):

- Fussy cut (15) 6 1/2" squares, each centered on a light block and (15) 6 1/2" squares, each centered on a red block.

#### From the Horse Shoe Stripe - Scarlet (B), cut:

- (5) 1 1/2" x WOF strips. Sub-cut (30) 1 1/2" x 6 1/2" strips.
- (8) 1 1/2" x WOF strips. Sub-cut (30) 1 1/2" x 8 1/2" strips.
- (9) 2 1/2" x WOF strips for the binding.

#### From the Twist Tie - Pale Cream (C), cut:

- (6) 1 1/2" x WOF strips. Sub-cut (30) 1 1/2" x 7 1/2" strips.
- (8) 1 1/2" x WOF strips. Sub-cut (30) 1 1/2" x 9 1/2" strips.

#### From the Horse Shoe Stripe - Sand (D), cut:

- (5) 1 1/2" x WOF strips. Sub-cut (30) 1 1/2" x 6 1/2" strips.
- (8) 1 1/2" x WOF strips. Sub-cut (30) 1 1/2" x 8 1/2" strips.

#### From the Twist Tie - Scarlet (E), cut:

- (6) 1 1/2" x WOF strips. Sub-cut (30) 1 1/2" x 7 1/2" strips.
- (8) 1 1/2" x WOF strips. Sub-cut (30) 1 1/2" x 9 1/2" strips.

#### From the Triangle Toss - Scarlet (F), cut:

- (6) 4 1/4" x WOF strips. Sub-cut (54) 4 1/4" squares. Cut the squares across both diagonals to make (216) 4 1/4" triangles. *Note: Only (213) 4 1/4" triangles will be used.*

#### From the Tiny Coral - Pale Cream (G), cut:

- (12) 4 1/4" x WOF strips. Sub-cut (107) 4 1/4" squares. Cut the squares across both diagonals to make (428) 4 1/4" triangles. *Note: Only (426) 4 1/4" triangles will be used.*
- (4) 2" x WOF strips. Sew the strips together end to end with diagonal seams and cut (2) 2" x 75 1/2" strips.
- (4) 2" x WOF strips. Sew the strips together end to end with diagonal seams and cut (2) 2" x 66 1/2" strips.

#### From the Floral Bud Toss - Sand (H), cut:

- (6) 4 1/4" x WOF strips. Sub-cut (54) 4 1/4" squares. Cut the squares across both diagonals to make (216) 4 1/4" triangles. *Note: Only (213) 4 1/4" triangles will be used.*

#### From the Floral Vine Strip - Dark Red (I), cut:

- (4) 3 1/2" x WOF strips. Sub-cut (42) 3 1/2" squares.

#### From the Border Stripe - Cream (J), fussy cut:

- (2) 6 1/2" x 94" Length of Fabric (LOF) strips.
- (2) 6 1/2" x 82" LOF strips.

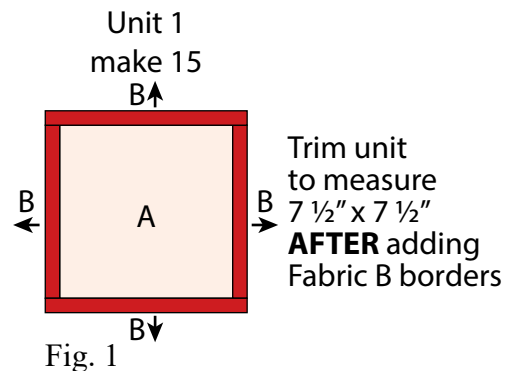
#### From the Tossed Allover Novelty - Scarlet (Backing), cut:

- (3) 86" x WOF strips for the backing. Sew the strips together and trim to make the 86" x 98" back.

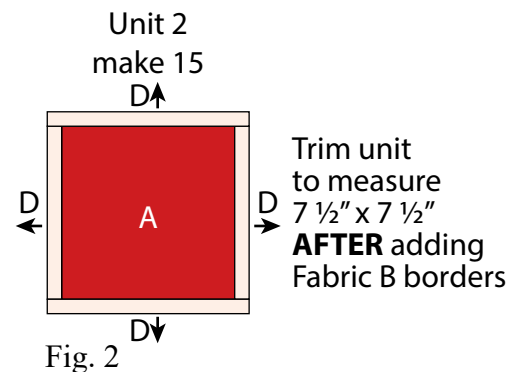
### Block Assembly

*Note: The arrows in figures represent the fabric print direction. Pay attention to the fabric and unit orientations when assembling the various components. Use a 1/4" seam allowance with right sides together (RST) unless otherwise noted.*

1. Sew (1) 1 1/2" x 6 1/2" Fabric B strip to each side of (1) 6 1/2" Fabric A light square. Sew (1) 1 1/2" x 8 1/2" Fabric B strip to the top and to the bottom of the Fabric A light square to make (1) Unit 1 square (Fig. 1). **Trim the block to measure 7 1/2" x 7 1/2"**. Repeat to make (15) Unit 1 squares total.



2. Sew (1) 1 1/2" x 6 1/2" Fabric D strip to each side of (1) 6 1/2" Fabric A red square. Sew (1) 1 1/2" x 8 1/2" Fabric D strip to the top and to the bottom of the Fabric A red square to make (1) Unit 2 square (Fig. 2). **Trim the block to measure 7 1/2" x 7 1/2"**. Repeat to make (15) Unit 2 squares total.



3. Sew (1) 1 1/2" x 7 1/2" Fabric C strip to each side of (1) Unit 1 square. Sew (1) 1 1/2" x 9 1/2" Fabric C strip to the top and to the bottom of the Unit 1 square to make (1) 9 1/2" Block One square (Fig. 3). Repeat to make (15) Block One squares total.

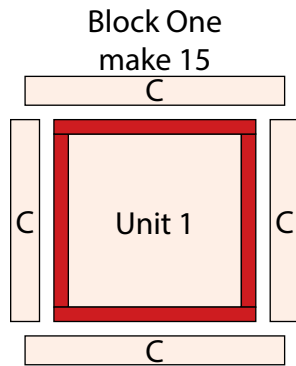


Fig. 3

4. Sew (1) 1 1/2" x 7 1/2" Fabric E strip to each side of (1) Unit 2 square. Sew (1) 1 1/2" x 9 1/2" Fabric E strip to the top and to the bottom of the Unit 2 square to make (1) 9 1/2" Block Two square (Fig. 4). Repeat to make (15) Block Two squares total.

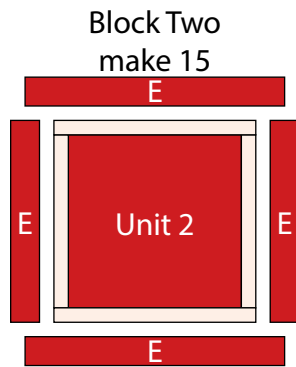


Fig. 4

5. Refer to Figure 5 and sew together (2) 4 1/4" Fabric G triangles, (1) 4 1/4" Fabric H triangle and (1) 4 1/4" Fabric F triangle to make (1) block. Trim the unit to measure 3 1/2" x 3 1/2" to make (1) Unit 3 square (Fig. 5). Repeat to make (213) Unit 3 squares total.

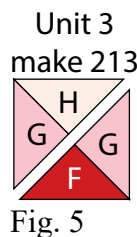


Fig. 5

6. Sew together (3) Unit 3 squares along the Fabric G sides to make (1) Unit 4 strip (Fig. 6). Repeat to make (71) Unit 4 strips total.

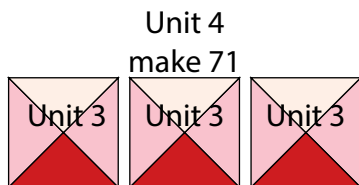


Fig. 6

7. Sew together (6) 3 1/2" Fabric I squares and (5) Unit 4 strips, end to end and alternating them from left to right, to make (1) Block Three strip (Fig. 7 below). Repeat to make (7) Block Three strips total.

8. Sew together (1) Unit 4 strip, (1) Block One square, (1) Unit 4 strip, (1) Block Two square, (1) Unit 4 strip, (1) Block One square, (1) Unit 4 strip, (1) Block Two square, (1) Unit 4 strip, (1) Block One square and (1) Unit 4 strip, in that order from left to right, to make Row One (Fig. 8). Repeat to make Row Three and Row Five.

9. Sew together (1) Unit 4 strip, (1) Block Two square, (1) Unit 4 strip, (1) Block One square, (1) Unit 4 strip, (1) Block Two square, (1) Unit 4 strip, (1) Block One square, (1) Unit 4 strip, (1) Block Two square and (1) Unit 4 strip, in that order from left to right, to make Row Two (Fig. 8). Repeat to make Row Four and Row Six.

10. Sew together the (7) Block Three strips and (6) pieced rows from Steps 8-9 in numerical order, lengthwise and alternating them from top to bottom, to make the 63 1/2" x 75 1/2" Center Block (Fig. 8).

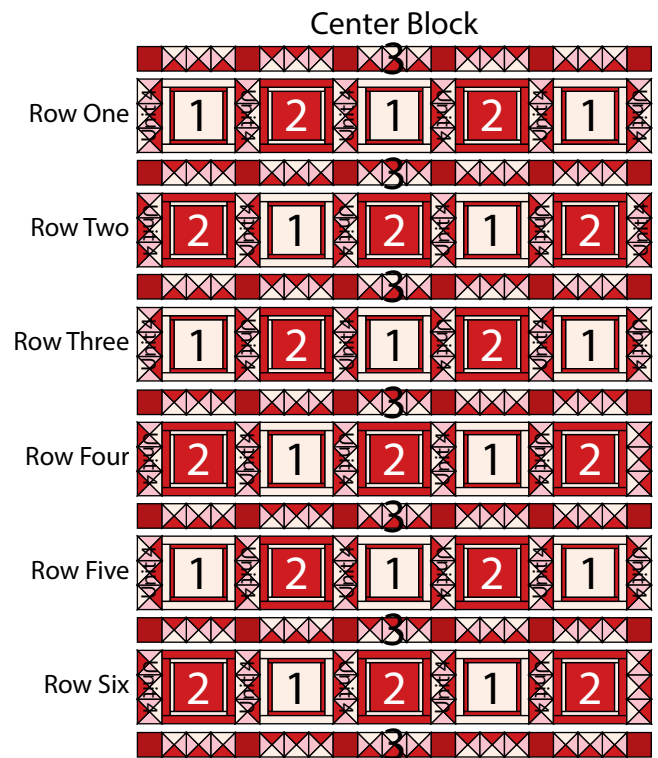


Fig. 8

Block Three  
make 7



Fig. 7

# MEMORIES IN REDWORK Quilt 2

### Quilt Top Assembly

*(Follow the Quilt Layout while assembling the quilt top.)*

11. Sew (1) 2" x 75 1/2" Fabric G strip to each side of the Center Block. Sew (1) 2" x 66 1/2" Fabric G strip to the top and to the bottom of the Center Block.

12. Center (1) 6 1/2" x 94" Fabric J strip on (1) side of the Center Block and pin in place. Start sewing the strip a 1/4" from the top edge of the block and stop a 1/4" from the bottom edge. **DO NOT TRIM THE EXCESS.** Repeat with the opposite side.

13. Repeat Step 12 to sew (1) 6 1/2" x 82" Fabric J strip to the top and to the bottom of the Center Block, making sure to stop and start 1/4" away from each end of the block. To miter each corner, fold the Center Block on a diagonal, wrong side together. This should line up the strips from adjacent sides (Fig. 9).

14. Starting at the sewn seam (represented by the arrow in Figure 9), draw a 45-degree line to the edge of the fabric. Sew on the drawn line. Trim the excess fabric leaving a 1/4" seam. Repeat this step with the remaining corners to make the quilt top.

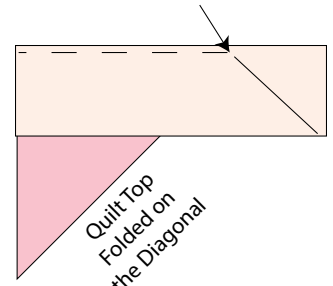
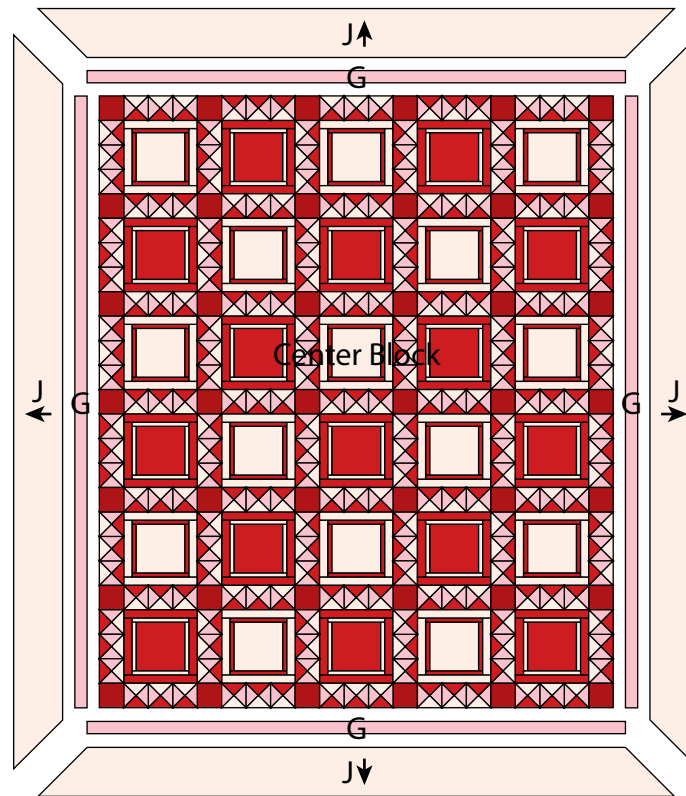


Fig. 9

15. Layer and quilt as desired.

16. Sew the (9) 2 1/2" x WOF Fabric B strips together, end to end with 45-degree seams, to make the binding. Fold this long strip in half lengthwise with wrong sides together and press.

17. Bind as desired.



Quilt Layout

*Every effort has been made to ensure that all projects are error free. All the information is presented in good faith, however no warranty can be given nor results guaranteed as we have no control over the execution of instructions. Therefore, we assume no responsibility for the use of this information or damages that may occur as a result. When errors are brought to our attention, we make every effort to correct and post a revision as soon as possible. Please make sure to check [www.henryglassfabrics.net](http://www.henryglassfabrics.net) for pattern updates prior to starting the project. We also recommend that you test the project prior to cutting for kits. Finally, all free projects are intended to remain free to you and are not for resale.*