

Memories in Redwork

• A Free Project Sheet •
• NOT FOR RESALE •

By Stacy West of Buttermilk Basin

Quilt Design by Heidi Pridemore



Quilt 1

Skill Level: Advanced Beginner



Henry Glass & Co., Inc.



facebook

Finished Quilt Size: 60" x 70"
49 West 37th Street, New York, NY 10018
tel: 212-686-5194 fax: 212-532-3525
Toll Free: 800-294-9495
www.henryglassfabrics.net

Please check our website for pattern updates before starting this project.

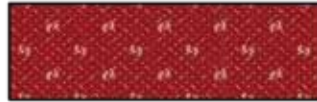
MEMORIES IN REDWORK Quilt 1

Finished Quilt Size: 60" x 70"

Fabrics in the Collection



Twist Tie
Pale Cream – 2944-33



Twist Tie
Scarlet – 2944-88



Floral and Honey Comb
Scarlet – 2945-88



Floral and Honey Comb
Dark Red – 2945-89



Tiny Coral
Pale Cream – 2946-33



Tiny Coral
Sand – 2946-36



Foulard Stripe
Sand – 2947-36



Foulard Stripe
Scarlet – 2947-88



Pin Stars
Sand – 2948-36



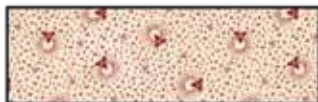
Pin Stars
Scarlet – 2948-88



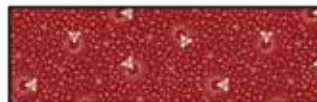
Car Novelty
Pale Cream – 2949-33



Car Novelty
Sand – 2949-36



Triangle Toss
Light Cream – 2950-34



Triangle Toss
Scarlet – 2950-88



Floral Bud Toss
Sand – 2951-36



Floral Bud Toss
Scarlet – 2951-88



Floral Vine Stripe
Scarlet – 2952-88



Floral Vine Stripe
Dark Red – 2952-89



Horse Shoe Stripe
Sand – 2953-36



Horse Shoe Stripe
Scarlet – 2953-88



Border Stripe
Cream – 2954-33



Tossed Allover Novelty
Cream – 2957-33



Tossed Allover Novelty
Scarlet – 2957-88



Embroidery Block Panel
Scarlet – 2955P-88



Grandmas Quilt Panel
Scarlet – 2956P-88

MEMORIES IN REDWORK Quilt 1

Page 3

Materials

1 panel	Grandmas Quilt Panel - Scarlet (A)	2956P-88
1 ½ yards	Foulard Stripe - Sand (B)	2947-36
¾ yard	Pin Stars - Sand (C)	2948-36
½ yard	Twist Tie - Scarlet (D)	2944-88
⅝ yard	Triangle Toss - Light Cream (E)	2950-34
½ yard	Floral Vine Stripe - Dark Red (F)	2952-89
¾ yard	Car Novelty - Pale Cream (G)	2949-33
½ yard	Pin Stars - Scarlet (H)	2948-88
½ yard	Floral and Honey Comb - Dark Red (I)	2945-89
2 yards	Border Stripe - Cream (J)	2954-33
1 yard	Horse Shoe Stripe - Scarlet (K)	2953-88*
4 yards	Tossed Allover Novelty - Cream (Backing)	2957-33

*Includes binding

Cutting Instructions

Please note: All strips are cut across the width of fabric (WOF) from selvage to selvage edge unless otherwise noted.

From the Grandmas Quilt Panel - Scarlet (A):

- Fussy cut (1) 32 ½" x 42 ½" rectangle, centered on the panel.

From the Foulard Stripe - Sand (B), cut:

- (2) 2 ½" x 50" Length of Fabric (LOF) strips.
- (2) 2 ½" x 40" LOF strips.

From the Pin Stars - Sand (C), cut:

- (2) 5 ½" x WOF strips. Sub-cut (9) 5 ½" squares.

From the Twist Tie - Scarlet (D), cut:

- (3) 3" x WOF strips. Sub-cut (36) 3" squares.

From the Triangle Toss - Light Cream (E), cut:

- (3) 5 ½" x WOF strips. Sub-cut (18) 5 ½" squares.

From the Floral Vine Strip - Dark Red (F), cut:

- (3) 3" x WOF strips. Sub-cut (36) 3" squares.

From the Car Novelty - Pale Cream (G), cut:

- (2) 5 ½" x WOF strips. Sub-cut (9) 5 ½" squares.

From the Pin Stars - Scarlet (H), cut:

- (3) 3" x WOF strips. Sub-cut (36) 3" squares.

From the Floral and Honey Comb - Dark Red (I), cut:

- (3) 3" x WOF strips. Sub-cut (36) 3" squares.

From the Border Stripe - Cream (J), cut:

- (2) 6 ½" x 71" LOF strips.
- (2) 6 ½" x 61" LOF strips.

From the Horse Shoe Stripe - Scarlet (K), cut:

- (4) 2" x WOF strips. Sew the strips together end to end with diagonal seams and cut (2) 2" x 67 ½" strips.
- (3) 2" x WOF strips. Sew the strips together end to end with diagonal seams and cut (2) 2" x 60 ½" strips.
- (7) 2 ½" WOF strips for the binding.

From the Tossed Allover Novelty - Cream (Backing), cut:

- (2) 68" x WOF strips for the backing. Sew the strips together and trim to make the 68" x 78" back.

Block Assembly

Note: The arrows in figures represent the fabric print direction. Pay attention to the fabric and unit orientations when assembling the various components. Use a ¼" seam allowance with right sides together (RST) unless otherwise noted.

1. Center (1) 2 ½" x 50" Fabric B strip on (1) side of the 32 ½" x 42 ½" Fabric A rectangle and pin in place. Start sewing the strip a ¼" from the top edge of the block and stop a ¼" from the bottom edge. **DO NOT TRIM THE EXCESS.** Repeat with the opposite side.
2. Repeat Step 1 to sew (1) 2 ½" x 40" Fabric B strip to the top and to the bottom of the Fabric A rectangle, making sure to stop and start ¼" away from each end of the block. To miter each corner, fold the Fabric A rectangle on a diagonal, wrong side together. This should line up the strips from adjacent sides (Fig. 1).
3. Starting at the sewn seam (represented by the arrow in Figure 1), draw a 45-degree line to the edge of the fabric. Sew on the drawn line. Trim the excess fabric leaving a ¼" seam. Repeat this step with the remaining corners. Trim the block to measure 35 ½" x 45 ½" to make the Center Block (Fig. 2).

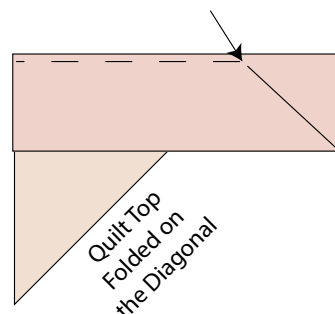


Fig. 1

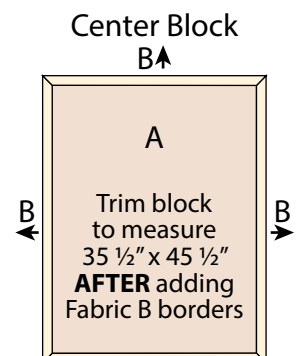


Fig. 2 B▼

MEMORIES IN REDWORK Quilt 1

Page 4

4. Place (1) 3" Fabric I square on the top left corner of (1) 5 1/2" Fabric E square, right sides together (Fig. 3). Sew across the diagonal of the smaller square from the upper right corner to the lower left corner (Fig. 3). Flip open the triangle formed and press. Trim away the excess fabric from behind the triangle 1/4" away from the sewn seam (Fig. 4).

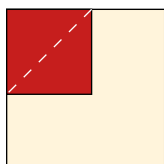


Fig. 3

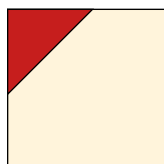


Fig. 4

5. Follow Figure 5 for the seam direction to add a 3" Fabric I square to each of the remaining corners of the 5 1/2" Fabric E square to make (1) Block One square (Fig. 6).

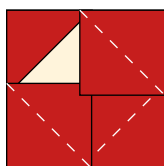


Fig. 5

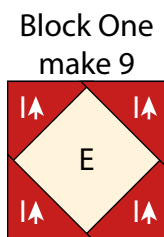


Fig. 6

7. Repeat Steps 4-5 and refer to Figures 7-9 for fabric identification, placement, seam direction and orientation to make (9) Block Two squares, (9) Block Three squares and (9) Block Four squares.

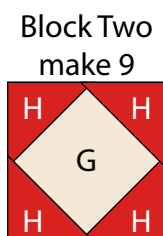


Fig. 7

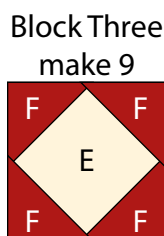


Fig. 8

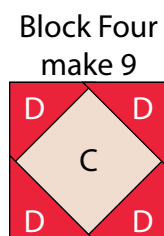


Fig. 9

8. Follow Figure 10 and sew together (9) assorted Blocks to make the Left Side Border.

9. Repeat Step 8 and refer to Figures 11-13 for component identification, placement and orientation to make the Right Side Border, the Top Border and the Bottom Border.

Left Side Border



Fig. 10

Right Side Border



Fig. 11

Top Border



Fig. 12

Bottom Border



Fig. 13

Quilt Top Assembly

(Follow the Quilt Layout while assembling the quilt top.)

10. Sew the Left Side Border and Right Side Border to the left and to the right sides of the Center Block.

11. Sew the Top Border and the Bottom Border to the top and to the bottom of the Center Block.

12. Center (1) 6 1/2" x 71" Fabric J strip on (1) side of the Center Block and pin in place. Start sewing the strip a 1/4" from the top edge of the block and stop a 1/4" from the bottom edge. **DO NOT TRIM THE EXCESS.** Repeat with the opposite side.

MEMORIES IN REDWORK

Quilt 1

Page 5

13. Repeat Step 12 to sew (1) 6 ½" x 61" Fabric J strip to the top and to the bottom of the Center Block, making sure to stop and start ¼" away from each end of the block. To miter each corner, fold the Center Block on a diagonal, wrong side together. This should line up the strips from adjacent sides (Fig. 1).

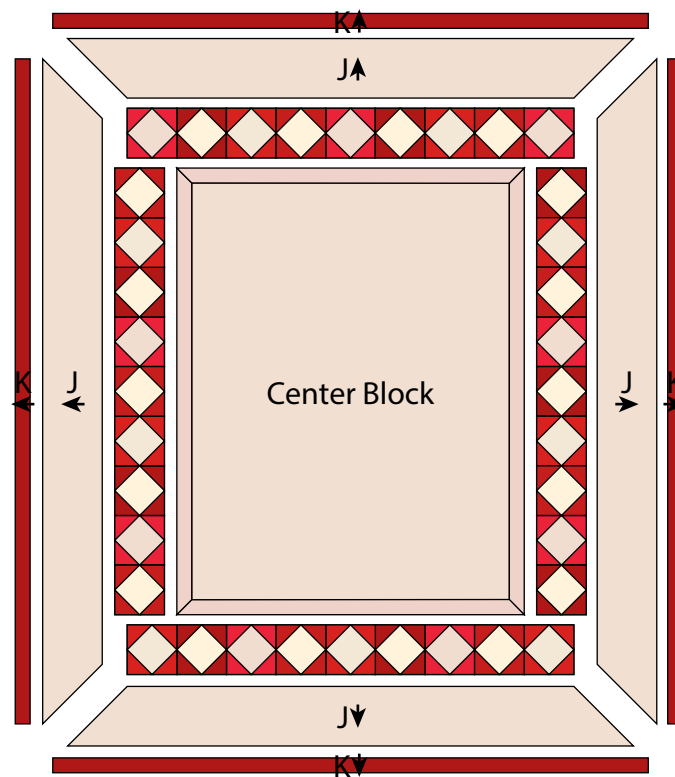
14. Starting at the sewn seam (represented by the arrow in Figure 1), draw a 45-degree line to the edge of the fabric. Sew on the drawn line. Trim the excess fabric leaving a ¼" seam. Repeat this step with the remaining corners.

15. Sew (1) 2" x 67 ½" Fabric K strip to each side of the Center Block. Sew (1) 2" x 60 ½" Fabric K strip to the top and to the bottom of the Center Block to make the quilt top.

16. Layer and quilt as desired.

17. Sew the (7) 2 ½" x WOF Fabric K strips together, end to end with 45-degree seams, to make the binding. Fold this long strip in half lengthwise with wrong sides together and press.

18. Bind as desired.



Quilt Layout

Every effort has been made to ensure that all projects are error free. All the information is presented in good faith, however no warranty can be given nor results guaranteed as we have no control over the execution of instructions. Therefore, we assume no responsibility for the use of this information or damages that may occur as a result. When errors are brought to our attention, we make every effort to correct and post a revision as soon as possible. Please make sure to check www.henryglassfabrics.net for pattern updates prior to starting the project. We also recommend that you test the project prior to cutting for kits. Finally, all free projects are intended to remain free to you and are not for resale.

©2022 Henry Glass & Co., Inc.