

Quilt 2

My Red Wagon

by Debbie Busby

Quilt design by Denise Russell.



Quilt size: 53" x 67"

Skill Level: Intermediate



Henry Glass & Co., Inc.

49 West 37th Street
New York, NY 10018

Tel: 212-686-5194 - Fax: 212-532-3525

Toll Free: 800-294-9495 - www.henryglassfabrics.com

facebook

Free Project
NOT FOR RESALE



My Red Wagon

Fabrics in the Collection



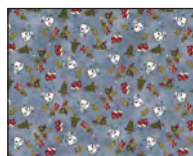
2556-88 Border Stripe - Red



2557P-Red Wagon Calendar Panel - Red



2558P-88 Banner Panel - Red



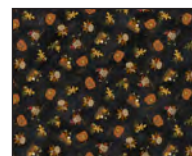
2540-75 Novelty Toss
Winter - Lt. Blue



2541-66 Novelty Toss
Spring- Green



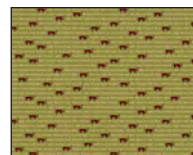
2542-44 Novelty Toss
Summer - Cream



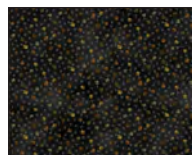
2543-99 Novelty Toss
Fall - Black



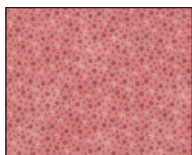
2544-44 Words Red
Wagon - Cream



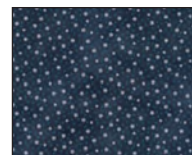
2544-66 Words Red
Wagon - Green



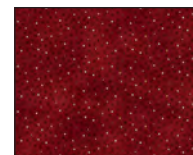
2545-99 Small Leaves
Black



2546-22 Small Flowers
Pink



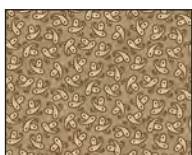
2547-77 Small
Snowflakes - Navy



2548-88 Small Stars
Red



2550-88 Paisley Winter
Red



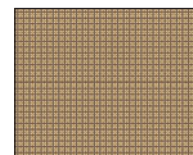
2551-33 Paisley Spring
Cocoa



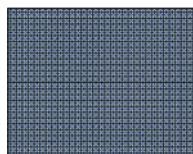
2552-77 Paisley Summer
Navy



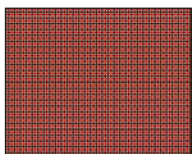
2553-35 Paisley Fall
Rust



2554-44 Plaid
Checkerboard - Tan



2554-77 Plaid
Checkerboard - Navy



2554-88 Plaid
Checkerboard - Red

Selected fabrics from the Whimsy Basic Collection
by Color Principle



8545-40 Oyster



8545-78 Navy

My Red Wagon - Quilt 2

Page 1

Materials

Yardages and cutting instructions are based on 42" of usable fabric width.

1 2557P-88 Red Wagon Calendar Panel – Red
1/3 yard 2542-44 Novelty Toss Summer - Cream
1/3 yard 2545-99 Small Leaves - Black
3/8 yard 2540-75 Novelty Toss Winter - Lt. Blue
3/8 yard 2550-88 Paisley Winter - Red
3/8 yard 2541-66 Novelty Toss Spring - Green
3/8 yard 2543-99 Novelty Toss Fall - Black
3/8 yard 2551-33 Paisley Spring - Cocoa
1/2 yard 2548-88 Small Stars - Red
1/2 yard 2547-77 Small Snowflakes - Navy
5/8 yard Whimsy Basic - 8945-78 - Navy
7/8 yard 2552-77 Paisley Summer - Navy
2-1/8 yards Whimsy Basic - 8945-40 - Oyster
3-1/2 yards 2540-75 Novelty Toss Winter - Lt. Blue
for backing
61" x 75" piece of Air Lite batting
Tracing paper

Cut Fabrics

***Note:** All strips are cut across the width of the fabric (WOF) from selvage to selvage unless otherwise noted. If cut across the length of the fabric (LOF), the **LOF** notation will be indicated.*

From 2557P-88 Red Wagon Calendar Panel – Red:

*Fussy-cut twelve blocks to 9-1/2" squares.

From 2542-44 Novelty Toss Summer – Cream:

*Cut two 2-1/2" x WOF strips. Sub-cut twenty 2-1/2" squares.

From 2545-99 Small Leaves – Black:

*Cut one 5" x WOF strip. Sub-cut sixteen 2-1/4" x 5" strips. (B7)

From 2540-75 Novelty Toss Winter - Lt. Blue:

*Cut two 4-1/4" x WOF strips. Sub-cut fifteen 3-1/4" x 4-1/4" rectangles. (A1)

From each:

2550-88 Paisley Winter – Red (A4, B4)

2541-66 Novelty Toss Spring – Green (A10, B10)

2543-99 Novelty Toss Fall – Black (A13, B13)

2551-33 Paisley Spring – Cocoa (A16, B16)

*Cut two 5" x WOF strips. Sub-cut thirty-one 2-1/4" x 5" strips.

From 2548-88 Small Stars - Red:

*Cut two 3-1/4" x WOF strips. Sub-cut twenty 3-1/4" squares; cut twice diagonally. (X)

*Cut six 1-1/2" x WOF strips for border 1.

From 2547-77 Small Snowflakes – Navy:

*Cut one 5" x WOF strip. Sub-cut fifteen 2-1/4" x 5" strips. (A7)

*Cut two 4-1/4" x WOF strips. Sub-cut sixteen 3-1/4" x 4-1/4" rectangles. (B1)

From Whimsy Basic - 8945-78 – Navy:

*Cut seven 2-1/2" x WOF strips for binding.

From 2552-77 Paisley Summer – Navy:

*Cut six 4-1/2" x WOF strips for border 2.

From Whimsy Basic - 8945-40 Oyster:

*Cut three 2-7/8" x WOF strips. Sub-cut forty 2-7/8" squares; cut once diagonally. (Y)

*Cut eighteen 3-1/2" x WOF strips. Sub-cut 372 2" x 3-1/2" strips.

Assemble Blocks

***Note:** Measurements include 1/4" seam allowances. Sew with right sides together unless otherwise stated. If no direction is specified, press seams toward the darker fabric.*

1. Fold one 2-1/2" 2542-44 Novelty Toss Summer – Cream square in half with right sides together. Mark the center on opposite sides of the square. Fold two 2548-88 Small Stars - Red triangles X with wrong sides together and crease to mark the center. Nesting the centers, sew the Red triangles to opposite sides of the Cream square. Press the seams open. In the same manner, sew two more Red triangles X to the other sides of the same square (*figure 1, next page*). Press open and trim ears. Repeat to make twenty units.

My Red Wagon - Quilt 2

Page 2



Figure 1 – Make 20.

2. Repeat step 1 using its twenty units and the Whimsy Basic - 8945-40 Oyster triangles Y (*figure 2*) to make four 4-1/2" blocks.

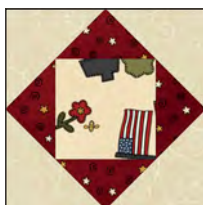


Figure 2

3. Print fifteen A and sixteen B sashing templates. Paper piece each section referring to Table 1 below for fabric placement, noting that you will place the fabrics on the backside of the templates and will stitch the seams on the printed side of the templates. Do not remove paper yet.

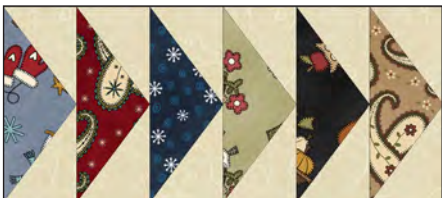

 <p>Horizontal Sashing – Make 15.</p> <p>Side triangles - Whimsy Basic - 8945-40 - Oyster A1 – 2540-75 Novelty Toss Winter - Lt. Blue A4 – 2550-88 Paisley Winter – Red A7 - 2547-77 Small Snowflakes – Navy A10 – 2541-66 Novelty Toss Spring – Green A13 – 2543-99 Novelty Toss Fall – Black A16 – 2551-33 Paisley Spring - Cocoa</p>	 <p>Vertical Sashing – Make 16.</p> <p>Side triangles - Whimsy Basic - 8945-40 - Oyster B1 – 2547-77 Small Snowflakes – Navy B4 – 2550-88 Paisley Winter – Red B7 – 2545-99 Small Leaves – Black B10 – 2541-66 Novelty Toss Spring – Green B13 – 2543-99 Novelty Toss Fall – Black B16 – 2551-33 Paisley Spring - Cocoa</p>
--	---

Table 1. Fabric placement for paper pieced sashing blocks.

Assemble Quilt Top

4. Referring to the quilt photo for block placement, lay out four vertical sashing blocks and three fussy-cut 9-1/2" 2557P-88 Red Wagon Calendar Panel – Red squares on four rows, join the blocks and sashing together in each row. Press the seams toward the blocks.

5. To make the horizontal sashing rows, alternatively sew together four step 2 cornerstone blocks and three horizontal sashing blocks. Repeat to make a total of five strips. Press the seams toward the cornerstones.

My Red Wagon - Quilt 2

Page 3

6. Matching adjacent seams, sew block rows and horizontal sashing strips together. Press the seams in one direction. Remove paper.

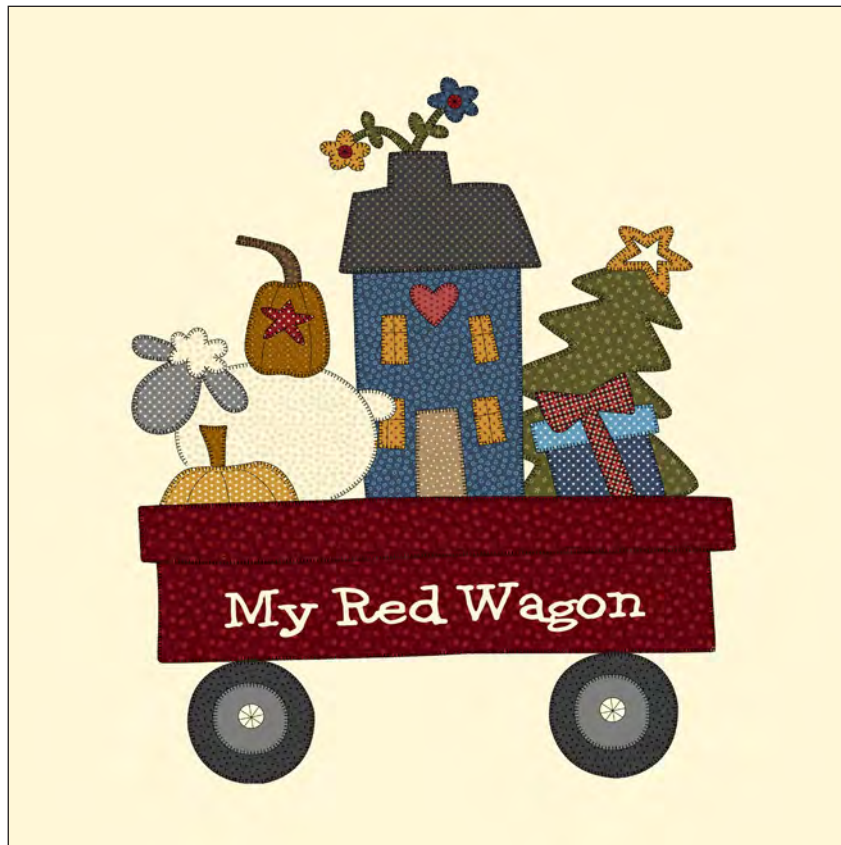
7. For border 1, sew the six 1-1/2" 2548-88 Small Stars - Red strips together end to end using diagonal seams. Measure the vertical length of the quilt top through the center and cut two border strips that length. Sew strips to the sides of the quilt top. Measure the width of the quilt top through its center. Cut two border strips that length and sew one to the top and one to the bottom. Press the seams toward the borders.

8. Repeat step 7 with the six 4-1/2" 2552-77 Paisley Summer - Navy strips to make and add border 2.

Finishing

9. Create a quilt sandwich with the batting between the quilt top and the backing. Pin or baste layers together, mark quilting design, and quilt by hand or machine. When quilting is complete, remove pins or basting and trim batting and backing even with raw edges of the quilt top.

10. Join the six 2-1/2" Whimsy Basic - 8945-78 - Navy binding strips together end to end using a diagonal seam to make one long strip. Fold in half lengthwise and press. Sew binding to the edges of the quilt, mitering corners, and overlapping ends. Fold binding to the back of the quilt and stitch it in place by hand to finish.

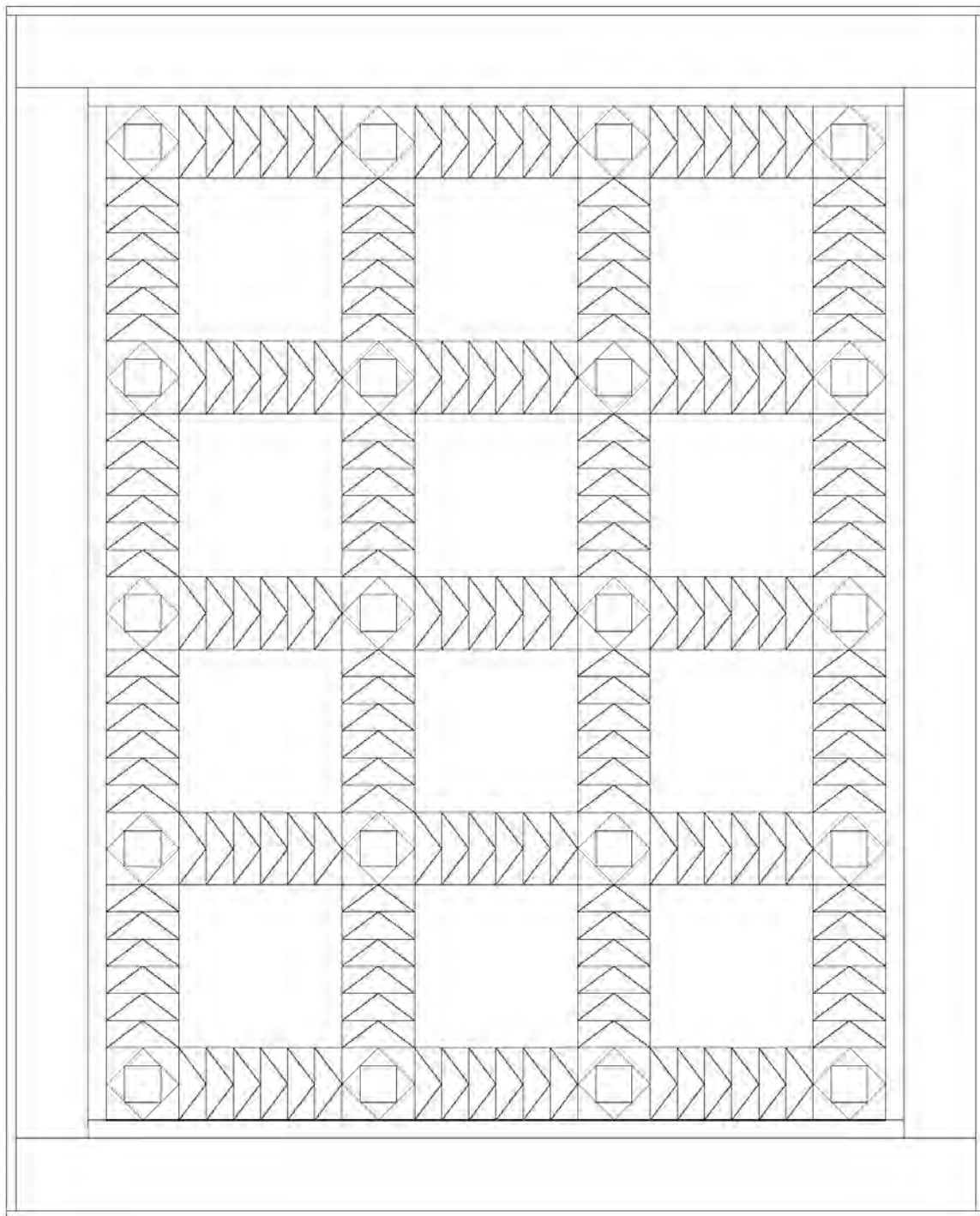


©2020 Henry Glass & Co. Inc.

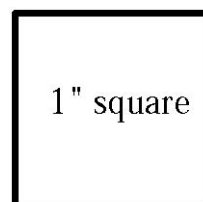
Every effort has been made to ensure that all projects are error free. All the information is presented in good faith; however, no warranty can be given nor results guaranteed as we have no control over the execution of instructions. Therefore, we assume no responsibility for the use of this information or damages that may occur as a result. When errors are brought to our attention, we make every effort to correct and post a revision as soon as possible. Please make sure to check www.henryglassfabrics.com for pattern updates prior to starting the project. We also recommend that you test the project prior to cutting for kits. Finally, all free projects are intended to remain free to you and are not for resale.

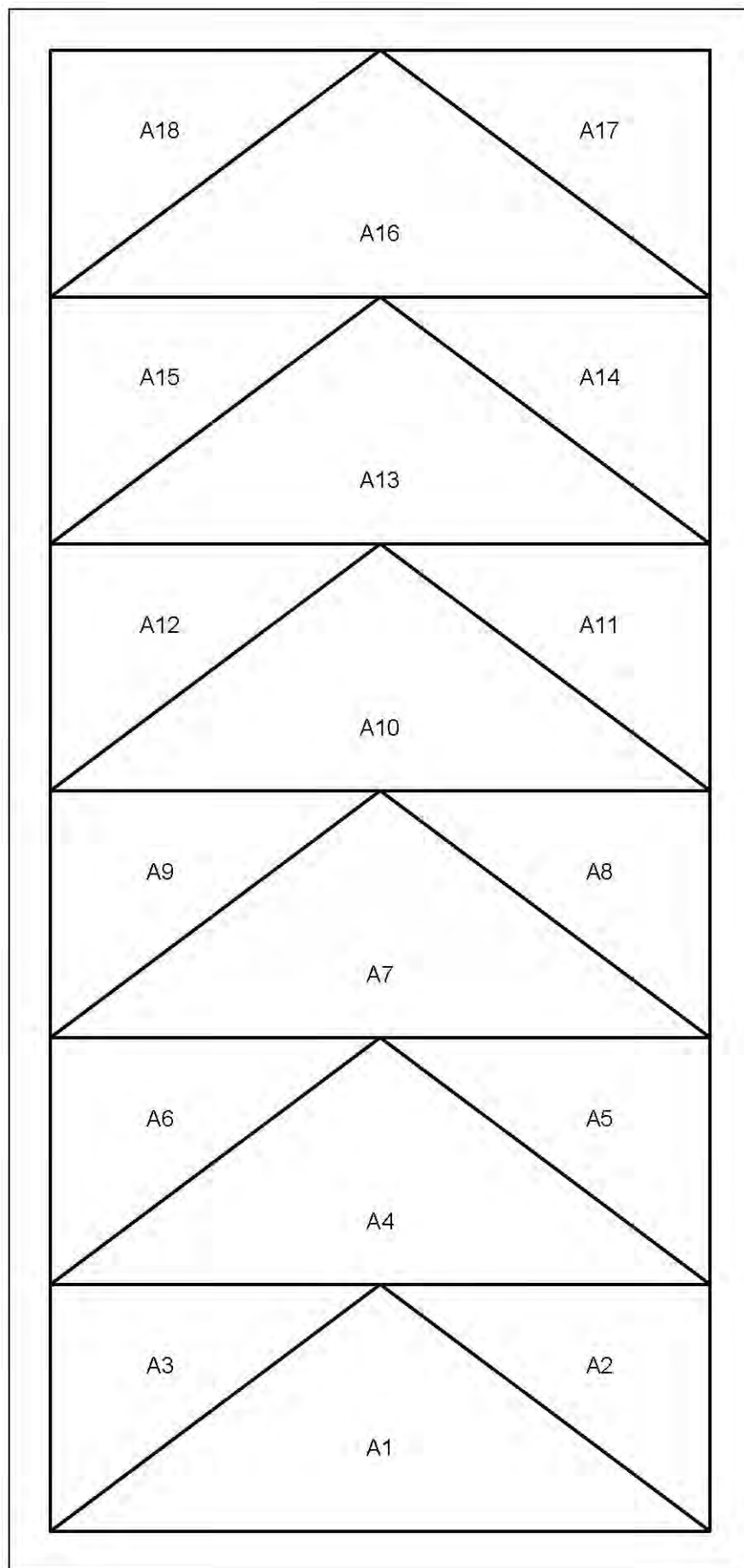
My Red Wagon - Quilt 2

Page 4



Quilt Diagram





Templates:

100% scale.

Print:

15 A templates;
16 B templates.

