

MOROCCAN RED

A Free Project Sheet
NOT FOR RESALE

By Barb Tourtillotte

Quilt Design by Heidi Pridemore



Quilt 1

Skill Level: Intermediate



Henry Glass & Co., Inc.



facebook

Finished Quilt Size: 64" x 76"
49 West 37th Street, New York, NY 10018
tel: 212-686-5194 fax: 212-532-3525
Toll Free: 800-294-9495
www.henryglassfabrics.net

Please check our website for pattern updates before starting this project.

MOROCCAN RED

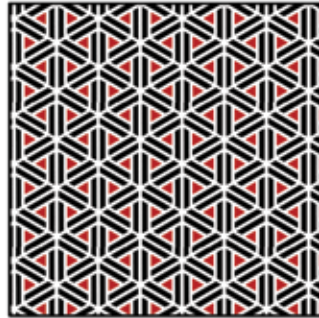
Quilt 1

Finished Quilt Size: 64" x 76"

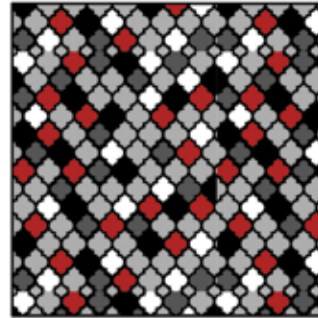
Fabrics in the Collection



Funky Flowers on Stripe
Patchwork - Red/Black – 9279-89



Geometric Triangles and Stripes -
Red/Black – 9280-89



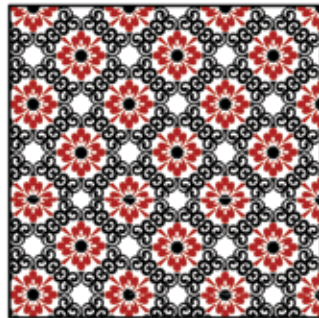
Lantern Shaped Tiles - Multi
9281-89



Red Ground with Black Scroll
Red – 9282-88



Black Ground with Gray Scroll
Black – 9282-99



Red Small Flower with Black
Trellis - Red/Black – 9283-89



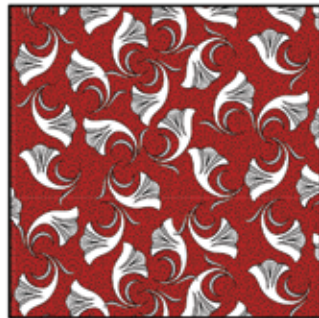
Red Medallion on Black Ground
Black/Red – 9284-89



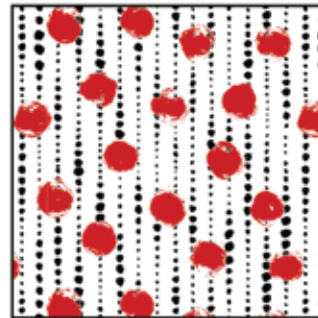
Multi Sized Medallion on Black
Ground - Black/Red – 9285-89



Gray Ground with Abstract Motif
Gray – 9286-90



Trumpet Flowers on Red Ground
Red – 9287-88



Abstract Dot on Gradient Dotted
Stripe - White – 9288-89



Abstract Floral on Black Ground
Black/Red – 9289-89



Patchwork Stripe Blocks
Black/White – 9290-9



White on White Large Dotted
Dots - White – 1883-01W



White on White Set Dot - White
1888-01W



White on White Touching Scrolls
White – 1892-01W

Select Fabrics from Quilt Flour Basics

MOROCCAN RED

Quilt 1

Page 1

Materials

1 1/8 yards	Black Ground with Gray Scroll - Black (A)	9282-99*
3/8 yard	Gray Ground with Abstract Motif - Gray (B)	9286-90
7/8 yard	White on White Large Dotted Dots - White (C)	1883-01W
1 1/2 yards	Red Ground with Black Scroll - Red (D)	9282-88
5/8 yard	Geometric Triangles and Stripes - Red/Black (E)	9280-89
3/4 yard	Lantern Shaped Tiles - Multi (F)	9281-89
1 1/8 yards	White on White Touching Scrolls - White (G)	1892-01W
3/8 yard	Trumpet Flowers on Red Ground - Red (H)	9287-88
3/4 yard	Abstract Floral on Black Ground - Black/Red (I)	9289-89
4 yards	Multi-sized Medallion on Black Ground - Black/Red (Backing)	9285-89

*Includes binding

Cutting Instructions

Please note: All strips are cut across the width of fabric (WOF) from selvage to selvage edge unless otherwise noted.

From the Black Ground with Gray Scroll - Black (A), cut:

- (6) 2 1/2" x WOF strips.
- (7) 2 1/2" x WOF strips for the binding.

From the Gray Ground with Abstract Motif - Gray (B), cut:

- (4) 2 1/2" x WOF strips.

From the White on White Large Dotted Dots - White (C), cut:

- (10) 2 1/2" x WOF strips.

From the Red Ground with Black Scroll - Red (D), cut:

- (4) 4 7/8" x WOF strips. Sub-cut (30) 4 7/8" squares.
- (60) Template 1 triangles.
- (60) Template 3 triangles.

From the Geometric Triangles and Stripes - Red/Black (E), cut:

- (60) Template 2 triangles.

From the Lantern Shaped Tiles - Multi (F), cut:

- (4) 4 7/8" x WOF strips. Sub-cut (30) 4 7/8" squares.

From the White on White Touching Scrolls - White (G), cut:

- (7) 4 1/2" x WOF strips. Sub-cut (60) 4 1/2" squares.

From the Trumpet Flowers on Red Ground - Red (H), cut:

- (2) 4 1/2" x WOF strips. Sub-cut (15) 4 1/2" squares.

From the Abstract Floral on Black Ground - Black/Red (I), cut:

- (4) 2 1/2" x WOF strips. Sew the strips together end to end with diagonal seams and cut (2) 2 1/2" x 72 1/2" strips.
- (4) 2 1/2" x WOF strips. Sew the strips together end to end with diagonal seams and cut (2) 2 1/2" x 64 1/2" strips.

From the Multi-sized Medallion on Black Ground - Black/Red (Backing), cut:

- (2) 72" x WOF strips for the backing. Sew the strips together and trim to make the 72" x 84" back.

Block Assembly

Note: The arrows in figures represent the fabric print direction. Pay attention to the fabric and unit orientations when assembling the various components.

1. Place (1) Fabric D-Template 1 triangle on top of (1) Fabric E-Template 2 triangle, right sides together, aligning the left sides (Fig. 1). Sew the (2) triangles together along the left side. Press the smaller triangle open.

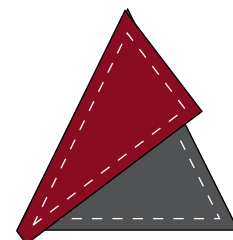


Fig. 1

2. Place (1) Fabric D-Template 3 triangle on top of the Fabric E-Template 3 triangle, right sides together, aligning the right sides (Fig. 2). Sew the (2) triangles together along the right side. Press the smaller triangle open to make (1) block. Trim to the block measure 4 1/2" square to make (1) Unit 1 square (Fig. 3).

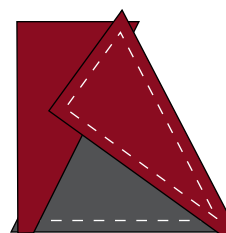


Fig. 2

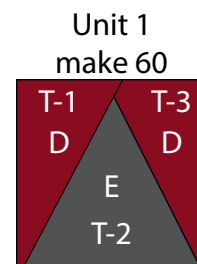


Fig. 3

3. Repeat Steps 1-2 to make (60) Unit 1 squares.

MOROCCAN RED

Quilt 1

Page 2

4. Sew (1) 2 1/2" x WOF Fabric A strip to the left side of (1) 2 1/2" Fabric C strip lengthwise to make (1) Strip Set 1 (Fig. 4). Repeat to make (6) Strip Set 1's total.

5. Cut the Strip Set 1's into (90) 2 1/2" x 4 1/2" Unit 2 strips (Fig. 5).

6. Sew (1) 2 1/2" x WOF Fabric C strip to the left side of (1) 2 1/2" Fabric B strip lengthwise to make (1) Strip Set 2 (Fig. 6). Repeat to make (4) Strip Set 2's total.

7. Cut the Strip Set 2's into (60) 2 1/2" x 4 1/2" Unit 3 strips (Fig. 7).

Strip Set 1
make 6

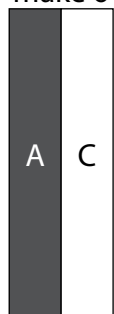


Fig. 4

Unit 2
cut 90

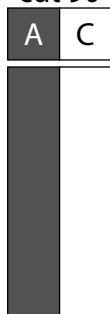


Fig. 5

Strip Set 2
make 4

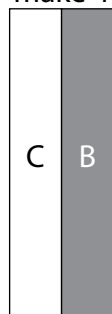


Fig. 6

Unit 3
cut 60



Fig. 7

8. Sew (1) Unit 2 strip to the top of (1) Unit 3 strip lengthwise to make (1) Unit 4 square (Fig. 8). Repeat to make (60) Unit 4 squares total.



Fig. 8



Fig. 9

9. Sew (2) Unit 2 strips together lengthwise to make (1) Unit 5 square (Fig. 9). Repeat to make (15) Unit 5 squares total.

10. Place (1) 4 7/8" Fabric F square on top of (1) 4 7/8" Fabric D square, right sides together. Draw a line across the diagonal of the top square from the upper right corner to the lower left (Fig. 10). Sew 1/4" away from each side of the drawn diagonal line (Fig. 10). Cut the (2) squares apart on the drawn diagonal line (Fig. 11) to make (2) half-square triangles. Trim the blocks to measure 4 1/2" square to make (2) Unit 6 squares (Fig. 12). Repeat to make (30) Unit 6 squares total.

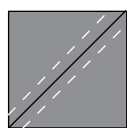


Fig. 10

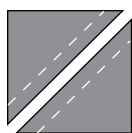


Fig. 11

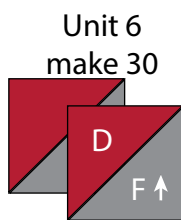


Fig. 12

11. Place (1) 4 7/8" Fabric F square on top of (1) 4 7/8" Fabric D square, right sides together. Draw a line across the diagonal of the top square from the upper left corner to the lower right (Fig. 13). Sew 1/4" away from each side of the drawn diagonal line (Fig. 13). Cut the (2) squares apart on the drawn diagonal line (Fig. 14) to make (2) half-square triangles. Trim the blocks to measure 4 1/2" square to make (2) Unit 7 squares (Fig. 15). Repeat to make (30) Unit 7 squares total.

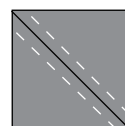


Fig. 13

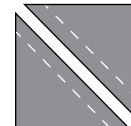


Fig. 14

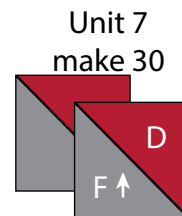


Fig. 15

12. Sew (1) Unit 4 square to each side of (1) Unit 1 square to make the top row. Repeat to make the bottom row. Sew (1) Unit 1 square to each side of (1) Unit 5 square to make the middle row. Sew the (3) rows together to make (1) Block One square (Fig. 16). Repeat to make (15) Block One squares total.

Block One
make 15

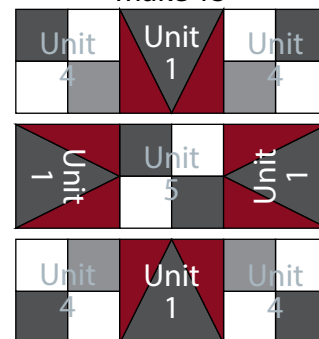


Fig. 16

13. Sew (1) Unit 6 square, (1) 4 1/2" Fabric G square and (1) Unit 7 square together in that order left to right to make the top row. Repeat to make the bottom row. Sew (1) 4 1/2" Fabric G square to each side of (1) 4 1/2" Fabric H square to make the middle row. Sew the (3) rows together to make (1) Block Two square (Fig. 17). Repeat to make (15) Block Two squares total.

Block Two
make 15

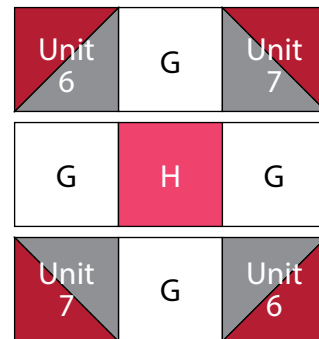


Fig. 17

MOROCCAN RED

Quilt 1

Page 3

Quilt Top Assembly

(Follow the Quilt Layout while assembling the quilt top.)

14. Sew (3) Block One squares and (2) Block Two squares together, alternating them, to make Row One. Repeat to make Row Three and Row Five.

15. Sew (3) Block Two squares and (2) Block One squares together, alternating them, to make Row Two. Repeat to make Rows Four and Six.

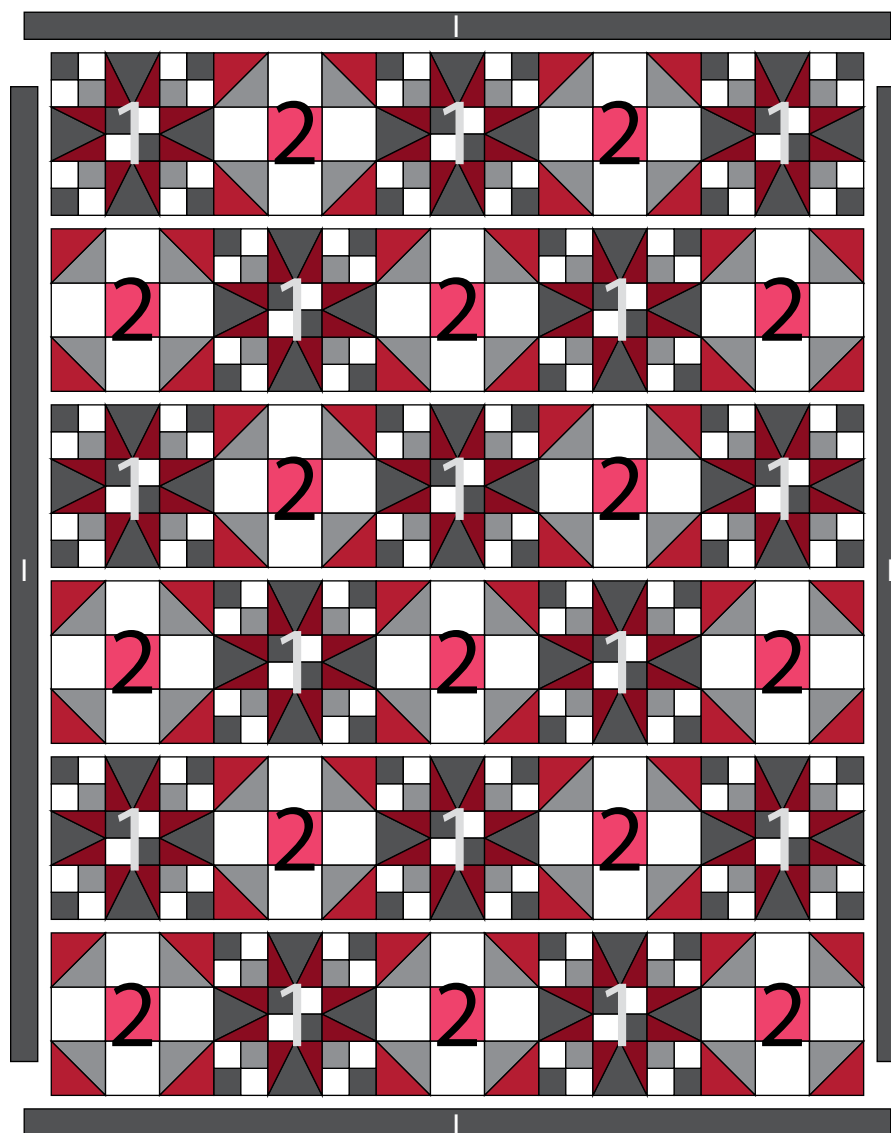
16. Sew the (6) rows together, in numerical order, to make the Center Block.

17. Sew (1) 2 ½" x 72 ½" Fabric I strip to each side of the Center Block. Sew (1) 2 ½" x 64 ½" Fabric I strip to the top and to the bottom of the Center Block to make the quilt top.

18. Layer and quilt as desired.

19. Sew the (7) 2 ½" x WOF Fabric A strips together, end to end with 45-degree seams, to make the binding. Fold this long strip in half lengthwise with wrong sides together and press.

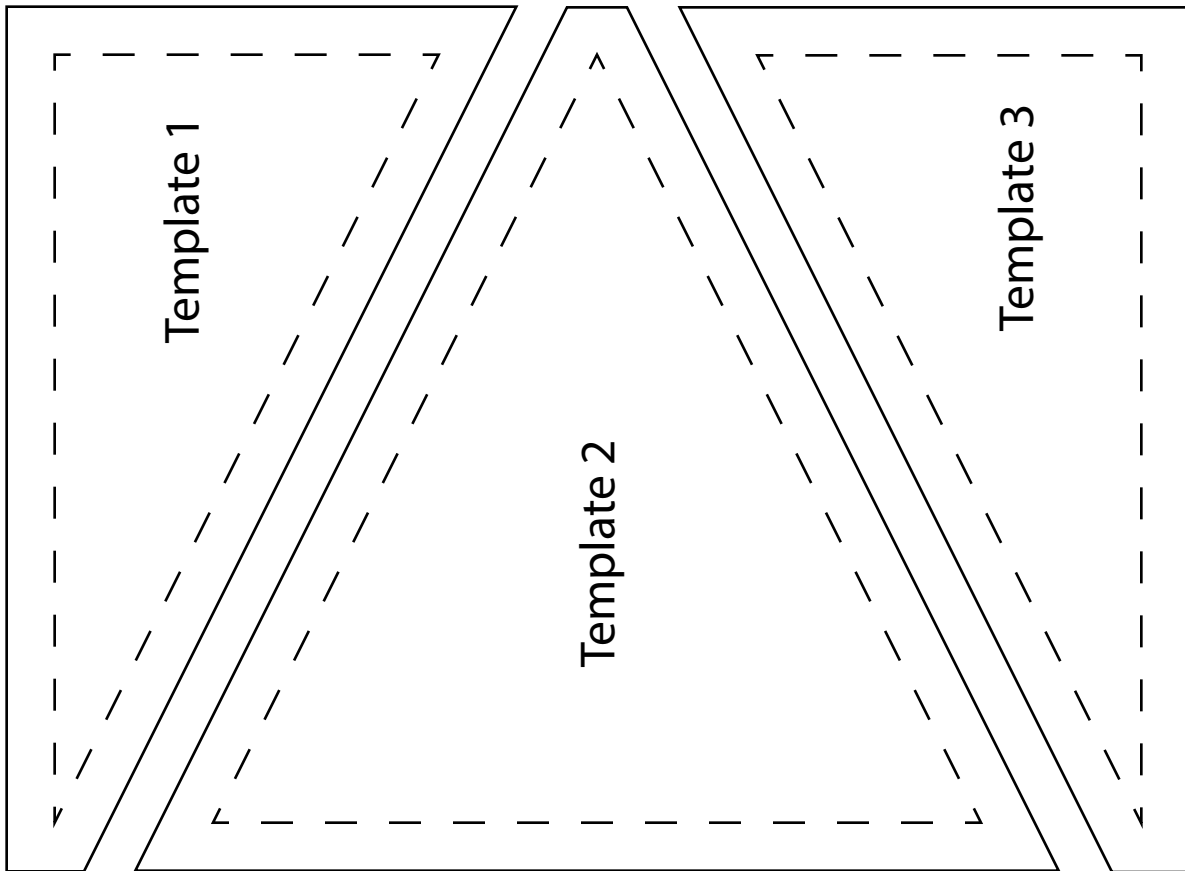
20. Bind as desired.



Quilt Layout

100% Template

1" square
for scale



*Every effort has been made to ensure that all projects are error free. All the information is presented in good faith, however no warranty can be given nor results guaranteed as we have no control over the execution of instructions. Therefore, we assume no responsibility for the use of this information or damages that may occur as a result. When errors are brought to our attention, we make every effort to correct and post a revision as soon as possible. Please make sure to check www.henryglassfabrics.net for pattern updates prior to starting the project. We also recommend that you test the project prior to cutting for kits. Finally, all free projects are intended to remain free to you and are **not for resale**.*