

Market Garden



• A Free Project Sheet •
• NOT FOR RESALE •

By Anni Downs

Quilt Design by Anni Downs



Quilt 2

Skill Level: Advanced Beginner



Henry Glass & Co., Inc.



facebook

Finished Quilt Size: 42" x 42"
49 West 37th Street, New York, NY 10018
tel: 212-686-5194 fax: 212-532-3525
Toll Free: 800-294-9495
www.henryglassfabrics.net
Please check our website for pattern updates before starting this project.

MARKET GARDEN

Quilt 2

Finished Quilt Size: 42" x 42"

Fabrics in the Collection



Tossed Wild Flowers
Light Blue – 2896-17



Tossed Wild Flowers
Cream – 2896-44



Tossed Wild Flowers
Raisin – 2896-58



Tossed Posies
Light Blue – 2897-17



Tossed Posies
Cream – 2897-44



Tossed Posies
Raisin – 2897-58



Tossed Sprig
Light Blue – 2898-17



Tossed Sprig
Cream – 2898-44



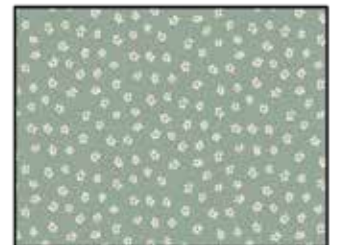
Foulard
Gray/Taupe – 2899-11



Foulard
Gold – 2899-33



Foulard
Raisin – 2899-58



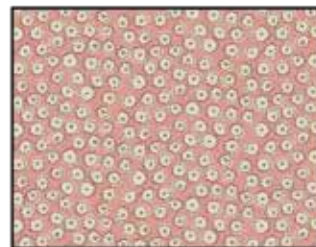
Daisy Toss
Light Blue – 2900-17



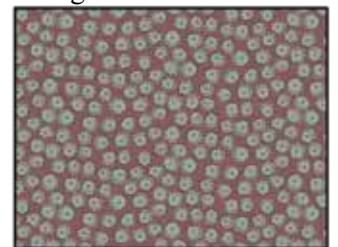
Daisy Toss
Green/Gold – 2900-66



Carnation Toss
Light Blue – 2901-17



Carnation Toss
Pink – 2901-22



Carnation Toss
Raisin – 2901-58



Market Garden
Gray/Taupe – 2902-11



Market Garden
Cream – 2902-44



Market Garden
Charcoal – 2902-91

Materials

1 yard	Tossed Sprig - Cream (A)	2898-44
3/4 yard	Daisy Toss - Light Blue (B)	2900-17*
1/4 yard	Tossed Wild Flowers - Light Blue (C)	2896-17
1/4 yard	Tossed Posies - Light Blue (D)	2897-17
1/4 yard	Tossed Sprig - Light Blue (E)	2898-17
3/8 yard	Market Garden - Charcoal (F)	2902-91
1/4 yard	Carnation Toss - Pink (G)	2901-22
1/8 yard	Tossed Posies - Cream (H)	2897-44
1/8 yard	Foulard - Gold (I)	2899-33
1/8 yard	Carnation Toss - Light Blue (J)	2901-17
1/8 yard	Daisy Toss - Green/Gold (K)	2900-66
1/8 yard	Foulard - Gray/Taupe (L)	2899-11
1/8 yard	Carnation Toss - Raisin (M)	2901-58
1/8 yard	Market Garden - Gray/Taupe (N)	2902-11
1/8 yard	Foulard - Raisin (O)	2899-58
1/8 yard	Tossed Posies - Raisin (P)	2897-58
5/8 yard	Tossed Wild Flowers - Cream (Q)	2896-44
3 yards	Market Garden - Cream (Backing)	2902-44

*Includes binding

Cutting Instructions

Please note: All strips are cut across the width of fabric (WOF) from selvage to selvage edge unless otherwise noted.

From the Tossed Sprig - Cream (A), cut:

- (5) 2 7/8" x WOF strips. Sub-cut (64) 2 7/8" squares.
- (5) 1 1/2" x WOF strips. Sub-cut (128) 1 1/2" squares.
- (2) 1 1/2" x 32 1/2" WOF strips.
- (2) 1 1/2" x 34 1/2" WOF strips.

From the Daisy Toss - Light Blue (B), cut:

- (2) 2 7/8" x WOF strips. Sub-cut (16) 2 7/8" squares.
- (2) 1 1/2" x 34 1/2" WOF strips.
- (2) 1 1/2" x 36 1/2" WOF strips.
- (5) 2 1/2" x WOF strips for the binding.

From the Tossed Wild Flowers - Light Blue (C), cut:

- (2) 2 7/8" x WOF strips. Sub-cut (16) 2 7/8" squares.

From the Tossed Posies - Light Blue (D), cut:

- (2) 2 7/8" x WOF strips. Sub-cut (16) 2 7/8" squares.

From the Tossed Sprig - Light Blue (E), cut:

- (2) 2 7/8" x WOF strips. Sub-cut (16) 2 7/8" squares.

From the Market Garden - Charcoal (F), cut:

- (5) 1 1/2" x WOF strips. Sub-cut (128) 1 1/2" squares.

From the Carnation Toss - Pink (G), cut:

- (2) 2 1/2" x WOF strips. Sub-cut (20) 2 1/2" squares.

From the Tossed Posies - Cream (H), cut:

- (1) 2 1/2" x WOF strip. Sub-cut (16) 2 1/2" squares.

From the Foulard - Gold (I), cut:

- (1) 2 1/2" x WOF strip. Sub-cut (16) 2 1/2" squares.

From the Carnation Toss - Light Blue (J), cut:

- (1) 2 1/2" x WOF strip. Sub-cut (12) 2 1/2" squares.

From the Daisy Toss - Green/Gold (K), cut:

- (1) 2 1/2" x WOF strip. Sub-cut (16) 2 1/2" squares.

From the Foulard - Gray/Taupe (L), cut:

- (1) 2 1/2" x WOF strip. Sub-cut (8) 2 1/2" squares.

From the Carnation Toss - Raisin (M), cut:

- (1) 2 1/2" x WOF strip. Sub-cut (8) 2 1/2" squares.

From the Market Garden - Gray/Taupe (N), cut:

- (1) 2 1/2" x WOF strip. Sub-cut (16) 2 1/2" squares.

From the Foulard - Raisin (O), cut:

- (1) 2 1/2" x WOF strip. Sub-cut (8) 2 1/2" squares.

From the Tossed Posies - Raisin (P), cut:

- (1) 2 1/2" x WOF strip. Sub-cut (8) 2 1/2" squares.

From the Tossed Wild Flowers - Cream (Q), cut:

- (2) 3 1/2" x 36 1/2" WOF strips.
- (2) 3 1/2" x 42 1/2" WOF strips, piece as needed.

From the Market Garden - Cream (Backing), cut:

- (2) 50" x WOF strips for the backing. Sew the strips together and trim to make the 50" x 50" back.

Block Assembly

Note: The arrows in figures represent the fabric print direction. Pay attention to the fabric and unit orientations when assembling the various components. Use a 1/4" seam allowance with right sides together (RST) unless otherwise noted.

1. Place (1) 2 7/8" Fabric B square on top of (1) 2 7/8" Fabric A square, right sides together. Draw a line across the diagonal of the top square (Fig. 1). Sew 1/4" away from each side of the drawn diagonal line (Fig. 1). Cut the (2) squares apart on the drawn diagonal line (Fig. 2) to make (2) half-square triangles. Trim the half-square triangles to measure 2 1/2" square to make (2) Unit 1 squares (Fig. 3). Repeat to make (32) Unit 1 squares total.

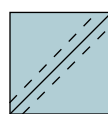


Fig. 1

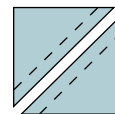


Fig. 2

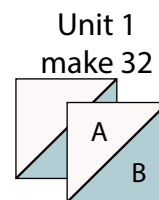


Fig. 3

2. Repeat Step 1 and refer to Figures 4-6 for fabric identification and placement to make (32) of each unit square for Unit 2 through Unit 4.

Unit 2
make 32

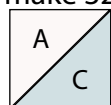


Fig. 4

Unit 3
make 32

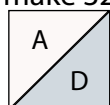


Fig. 5

Unit 4
make 32

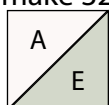


Fig. 6

3. Sew (1) Unit 3 to the left side of (1) Unit 4 to make the top row. Sew (1) Unit 1 square to the left side of (1) Unit 2 square to make the bottom row. Sew together the (2) rows lengthwise to make (1) 4 1/2" Block One square (Fig. 7). Repeat to make (32) Block One squares total.

Block One
make 32

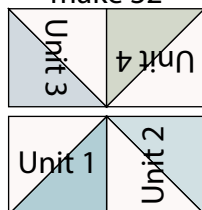


Fig. 7

4. Place (1) 1 1/2" Fabric A square on the top left corner of (1) 2 1/2" Fabric G square, right sides together (Fig. 8). Sew across the diagonal of the smaller square from the upper right corner to the lower left corner (Fig. 8). Flip open the triangle formed and press (Fig. 9). Trim away the excess fabric from behind the triangle 1/4" away from the sewn seam.



Fig. 8



Fig. 9



Fig. 10

Unit 5
make 20



Fig. 11

7. Repeat Steps 4-5 and refer to Figures 12-23 for fabric identification, placement and seam direction to make the designated number of unit squares for Unit 6 through Unit 17.

Unit 6
make 16



Fig. 12

Unit 7
make 16



Fig. 13

Unit 8
make 12



Fig. 14

Unit 9
make 16



Fig. 15

Unit 10
make 8



Fig. 16

Unit 11
make 8



Fig. 17

Unit 12
make 4



Fig. 18

Unit 13
make 4



Fig. 19

Unit 14
make 4



Fig. 20

Unit 15
make 4



Fig. 21

Unit 16
make 8



Fig. 22

Unit 17
make 8



Fig. 23

Block Two
make 5

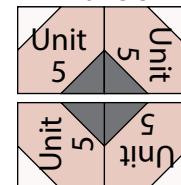


Fig. 24

8. Sew (4) Unit 5 squares together to make (1) 4 1/2" Block Two square (Fig. 24). Repeat to make (5) Block Two squares total.

5. Follow Figure 10 for the seam direction to add a 1 1/2" Fabric F square to the lower right corner of the 2 1/2" Fabric G square to make (1) Unit 5 square (Fig. 11).

6. Repeat Steps 4-5 to make (20) Unit 5 squares total.

9. Repeat Step 8 and refer to Figures 25-33 for component identification, placement and orientation to make the indicated number of block squares for Block Three through Block Eleven.

Block Three
make 4

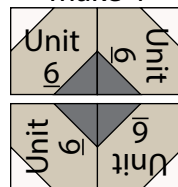


Fig. 25

Block Four
make 4

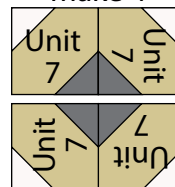


Fig. 26

Block Five
make 3

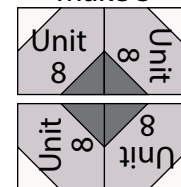


Fig. 27

Block Six
make 4

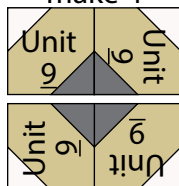


Fig. 28

Block Seven
make 2

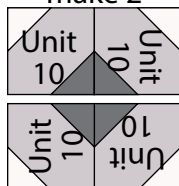


Fig. 29

Block Eight
make 2

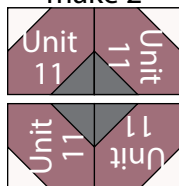


Fig. 30

Block Nine
make 4

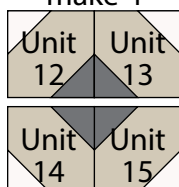


Fig. 31

Block Ten
make 2

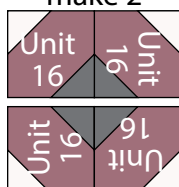


Fig. 32

Block Eleven
make 2

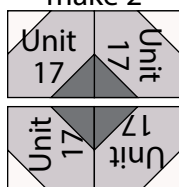


Fig. 33

10. Sew (8) assorted Blocks together to make Row One (Fig. 34). Repeat to make Row Two through Row Eight.

11. Sew together the (8) Rows from Step 10, in numerical order from top to bottom, to make the 32 1/2" x 32 1/2" Center Block (Fig. 34).

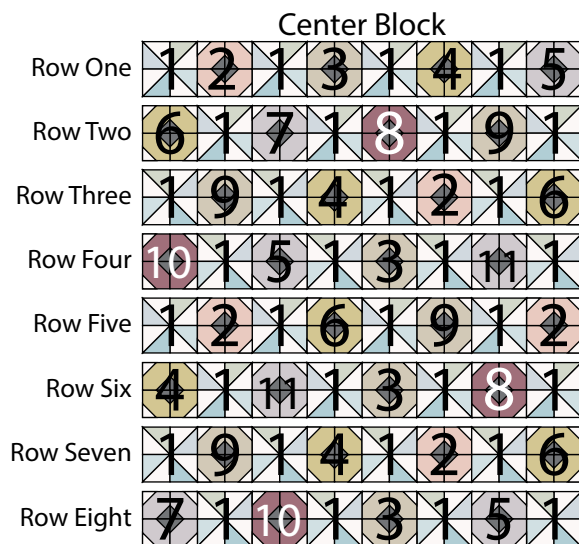


Fig. 34

Quilt Top Assembly

(Follow the Quilt Layout while assembling the quilt top.)

12. Sew (1) 1 1/2" x 32 1/2" Fabric A strip to each side of the Center Block. Sew (1) 1 1/2" x 34 1/2" Fabric A strip to the top and to the bottom of the Center Block.

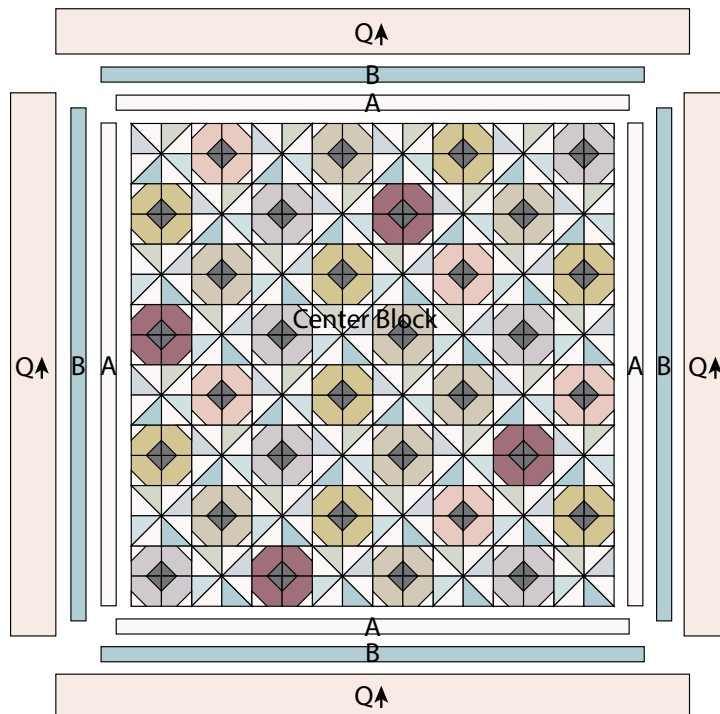
13. Sew (1) 1 1/2" x 34 1/2" Fabric B strip to each side of the Center Block. Sew (1) 1 1/2" x 36 1/2" Fabric B strip to the top and to the bottom of the Center Block.

14. Sew (1) 3 1/2" x 36 1/2" Fabric Q strip to each side of the Center Block. Sew (1) 3 1/2" x 42 1/2" Fabric Q strip to the top and to the bottom of the Center Block to make the quilt top.

15. Layer and quilt as desired.

16. Sew the (5) 2 1/2" x WOF Fabric B strips together, end to end with 45-degree seams, to make the binding. Fold this long strip in half lengthwise with wrong sides together and press.

17. Bind as desired.



Quilt Layout

Every effort has been made to ensure that all projects are error free. All the information is presented in good faith, however no warranty can be given nor results guaranteed as we have no control over the execution of instructions. Therefore, we assume no responsibility for the use of this information or damages that may occur as a result. When errors are brought to our attention, we make every effort to correct and post a revision as soon as possible. Please make sure to check www.henryglassfabrics.net for pattern updates prior to starting the project. We also recommend that you test the project prior to cutting for kits. Finally, all free projects are intended to remain free to you and are not for resale.