

# Market Garden



• A Free Project Sheet •  
• NOT FOR RESALE •

By Anni Downs

Quilt Design by Anni Downs



Quilt 1

Skill Level: Advanced Beginner



Henry Glass & Co., Inc.



facebook

Finished Quilt Size: 48 ½" x 48 ½"  
49 West 37th Street, New York, NY 10018  
tel: 212-686-5194 fax: 212-532-3525  
Toll Free: 800-294-9495  
[www.henryglassfabrics.net](http://www.henryglassfabrics.net)

Please check our website for pattern updates before starting this project.



# MARKET GARDEN

Quilt 1

Finished Quilt Size: 48 ½" x 48 ½"

## Fabrics in the Collection



Tossed Wild Flowers  
Light Blue – 2896-17



Tossed Wild Flowers  
Cream – 2896-44



Tossed Wild Flowers  
Raisin – 2896-58



Tossed Posies  
Light Blue – 2897-17



Tossed Posies  
Cream – 2897-44



Tossed Posies  
Raisin – 2897-58



Tossed Sprig  
Light Blue – 2898-17



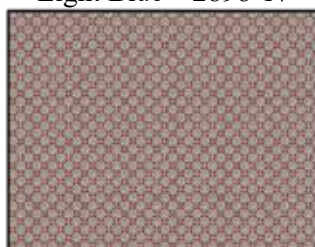
Tossed Sprig  
Cream – 2898-44



Foulard  
Gray/Taupe – 2899-11



Foulard  
Gold – 2899-33



Foulard  
Raisin – 2899-58



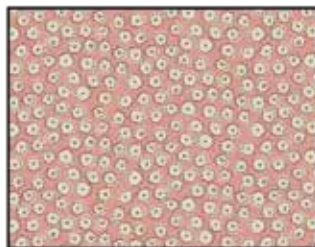
Daisy Toss  
Light Blue – 2900-17



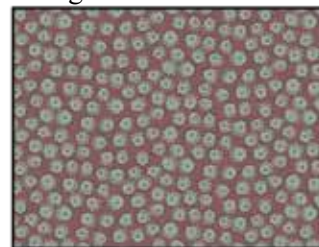
Daisy Toss  
Green/Gold – 2900-66



Carnation Toss  
Light Blue – 2901-17



Carnation Toss  
Pink – 2901-22



Carnation Toss  
Raisin – 2901-58



Market Garden  
Gray/Taupe – 2902-11



Market Garden  
Cream – 2902-44



Market Garden  
Charcoal – 2902-91

### Materials

3/8 yard	Market Garden - Cream (A)	2902-44
3/8 yard	Tossed Wild Flowers - Light Blue (B)	2896-17
5/8 yard	Tossed Posies - Light Blue (C)	2897-17
1/2 yard	Tossed Sprig - Light Blue (D)	2898-17
1/2 yard	Daisy Toss - Light Blue (E)	2900-17
1 1/8 yards	Tossed Sprig - Cream (F)	2898-44
1/4 yard	Foulard - Raisin (G)	2899-58
2/3 yard	Foulard - Gray/Taupe (H)	2899-11*
1/4 yard	Foulard - Gold (I)	2899-33
1/8 yard	Tossed Wild Flowers - Raisin (J)	2896-58
1/8 yard	Tossed Posies - Cream (K)	2897-44
1/8 yard	Tossed Posies - Raisin (L)	2897-58
3/4 yard	Market Garden - Gray/Taupe (M)	2902-11
1/8 yard	Carnation Toss - Light Blue (N)	2901-17
1/8 yard	Carnation Toss - Pink (O)	2901-22
1/8 yard	Daisy Toss - Green/Gold (P)	2900-66
1/8 yard	Carnation Toss - Raisin (Q)	2901-58
3 1/4 yards	Tossed Wild Flowers - Cream (Backing)	2896-44

\*Includes binding

### Cutting Instructions

*Please note: All strips are cut across the width of fabric (WOF) from selvage to selvage edge unless otherwise noted.*

#### From the Market Garden - Cream (A), cut:

- (2) 4 3/4" x WOF strips. Sub-cut (16) 4 3/4" squares.

#### From the Tossed Wild Flowers - Light Blue (B), cut:

- (1) 5 1/2" x WOF strip. Sub-cut (4) 5 1/2" squares. Cut the squares across both diagonals to make (16) 5 1/2" triangles.
- (1) 2 3/8" x WOF strip. Sub-cut (13) 2 3/8" squares.

#### From the Tossed Posies - Light Blue (C), cut:

- (1) 9 3/4" x WOF strip. Sub-cut (2) 9 3/4" squares. Cut the squares across both diagonals to make (8) 9 3/4" triangles.  
*Note: You will only use (5) 9 3/4" triangles.*
- (1) 5 1/2" x WOF strip. Sub-cut (4) 5 1/2" squares, (1) 5 1/8" square and (4) 2 3/8" squares. Cut the 5 1/2" squares across both diagonals to make (16) 5 1/2" triangles. Cut the 5 1/8" square across (1) diagonal to make (2) 5 1/8" triangles.

#### From the Tossed Sprig - Light Blue (D), cut:

- (1) 9 3/4" x WOF strip. Sub-cut (2) 9 3/4" squares. Cut the squares across both diagonals to make (8) 9 3/4" triangles.  
*Note: You will only use (6) 9 3/4" triangles.*
- (1) 5 1/2" x WOF strip. Sub-cut (4) 5 1/2" squares and (1) 5 1/8" square. Cut the 5 1/2" squares across both diagonals to make (16) 5 1/2" triangles. Cut the 5 1/8" square across (1) diagonal to make (2) 5 1/8" triangles. *Note: You will only use (1) 5 1/8" triangle.*

#### From the Daisy Toss - Light Blue (E), cut:

- (1) 9 3/4" x WOF strip. Sub-cut (2) 9 3/4" squares. Cut the squares across both diagonals to make (8) 9 3/4" triangles.  
*Note: You will only use (5) 9 3/4" triangles.*
- (1) 5 1/2" x WOF strip. Sub-cut (4) 5 1/2" squares and (1) 5 1/8" square. Cut the 5 1/2" squares across both diagonals to make (16) 5 1/2" triangles. Cut the 5 1/8" square across (1) diagonal to make (2) 5 1/8" triangles. *Note: You will only use (1) 5 1/8" triangle.*

#### From the Tossed Sprig - Cream (F), cut:

- (2) 3 7/8" x WOF strips. Sub-cut (13) 3 7/8" squares.
- (7) 2 3/8" x WOF strips. Sub-cut (103) 2 3/8" squares.
- (5) 2" x WOF strips. Sub-cut (50) 2" x 3 1/2" strips.

#### From the Foulard - Raisin (G), cut:

- (1) 3 7/8" x WOF strip. Sub-cut (5) 3 7/8" squares.
- (1) 2 3/8" x WOF strip. Sub-cut (9) 2 3/8" squares.

#### From the Foulard - Gray/Taupe (H), cut:

- (1) 3 7/8" x WOF strip. Sub-cut (4) 3 7/8" squares.
- (1) 2 3/8" x WOF strip. Sub-cut (8) 2 3/8" squares.
- (5) 2 1/2" x WOF strips for the binding.

#### From the Foulard - Gold (I), cut:

- (1) 3 7/8" x WOF strip. Sub-cut (4) 3 7/8" squares.
- (1) 2 3/8" x WOF strip. Sub-cut (8) 2 3/8" squares.

#### From the Tossed Wild Flowers - Raisin (J), cut:

- (1) 2 3/8" x WOF strip. Sub-cut (4) 2 3/8" squares.

#### From the Tossed Posies - Cream (K), cut:

- (1) 2 3/8" x WOF strip. Sub-cut (8) 2 3/8" squares.

#### From the Tossed Posies - Raisin (L), cut:

- (1) 2 3/8" x WOF strip. Sub-cut (9) 2 3/8" squares.

#### From the Market Garden - Gray/Taupe (M), cut:

- (6) 3 1/2" x WOF strips.

#### From the Carnation Toss - Light Blue (N), cut:

- (1) 2 3/8" x WOF strip. Sub-cut (9) 2 3/8" squares.

#### From the Carnation Toss - Pink (O), cut:

- (1) 2 3/8" x WOF strip. Sub-cut (9) 2 3/8" squares.

#### From the Daisy Toss - Green/Gold (P), cut:

- (1) 2 3/8" x WOF strip. Sub-cut (9) 2 3/8" squares.

#### From the Carnation Toss - Raisin (Q), cut:

- (1) 2 3/8" x WOF strip. Sub-cut (4) 2 3/8" squares.

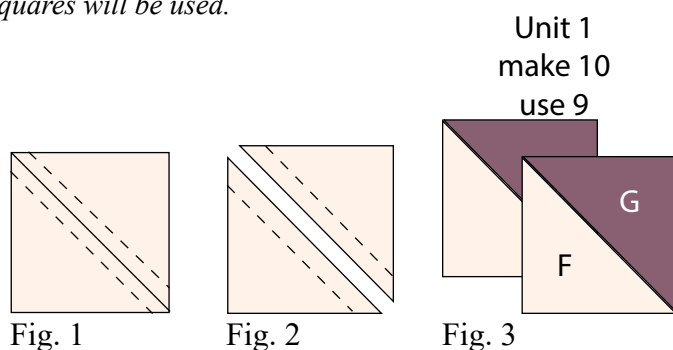
#### From the Tossed Wild Flowers - Cream (Backing), cut:

- (2) 57" x WOF strips for the backing. Sew the strips together and trim to make the 57" x 57" back.

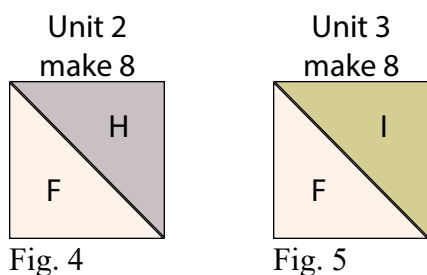
### Block Assembly

**Note:** Pay attention to the unit orientations when assembling the various components. Use a  $\frac{1}{4}$ " seam allowance with right sides together (RST) unless otherwise noted.

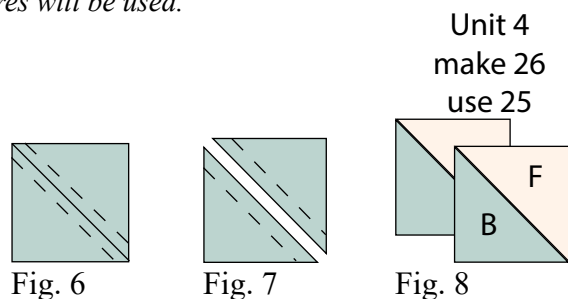
1. Place (1)  $3\frac{7}{8}$ " Fabric F square on top of (1)  $3\frac{7}{8}$ " Fabric G square, right sides together. Draw a line across the diagonal of the top square (Fig. 1). Sew  $\frac{1}{4}$ " away from each side of the drawn diagonal line (Fig. 1). Cut the (2) squares apart on the drawn diagonal line (Fig. 2) to make (2) half-square triangles. Trim the half-square triangles to measure  $3\frac{1}{2}$ " square to make (2) Unit 1 squares (Fig. 3). Repeat to make (10) Unit 1 squares total. *Note: Only (9) Unit 1 squares will be used.*



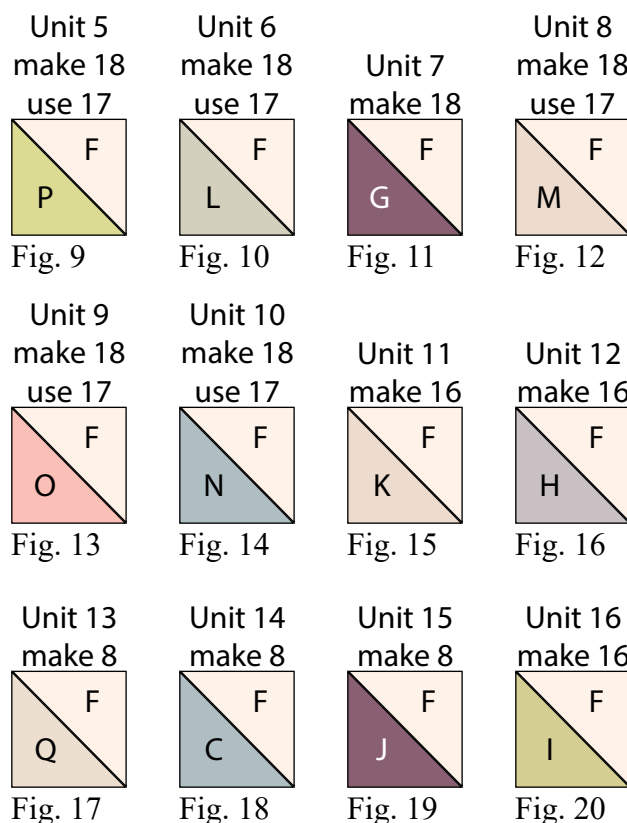
2. Repeat Step 1 and refer to Figures 4-5 to make (8) Unit 2 squares and (8) Unit 3 squares.



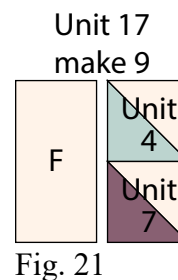
3. Place (1)  $2\frac{3}{8}$ " Fabric B square on top of (1)  $2\frac{3}{8}$ " Fabric F square, right sides together. Draw a line across the diagonal of the top square (Fig. 6). Sew  $\frac{1}{4}$ " away from each side of the drawn diagonal line (Fig. 6). Cut the (2) squares apart on the drawn diagonal line (Fig. 7) to make (2) half-square triangles. Trim the half-square triangles to measure 2" square to make (2) Unit 4 squares (Fig. 8). Repeat to make (26) Unit 2 squares total. *Note: Only (25) Unit 2 squares will be used.*



4. Repeat Step 3 and refer to Figures 9-20 for fabric identification and placement to make the indicated number of unit squares for Unit 5 through Unit 16. *Note: Not all of the unit squares will be used.*



5. Sew (1) Unit 4 square to the top of (1) Unit 7 square. Sew (1)  $2$ " x  $3\frac{1}{2}$ " Fabric F strip to the left side of the newly sewn strip lengthwise to make (1)  $3\frac{1}{2}$ " Unit 17 square (Fig. 21). Repeat to make (9) Unit 17 squares total.



# MARKET GARDEN

## Quilt 1

## Page 5

6. Repeat Step 5 and refer to Figures 22-29 for component identification, placement and orientation to make the indicated number of unit squares for Unit 18 through Unit 25.

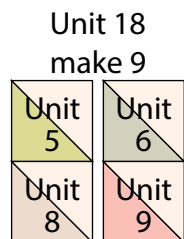


Fig. 22

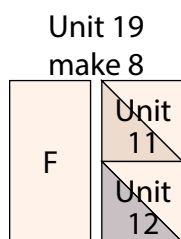


Fig. 23

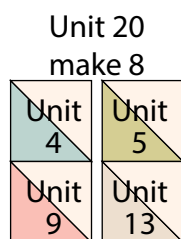


Fig. 24

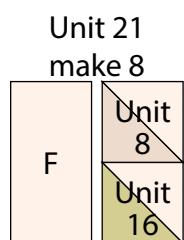


Fig. 25

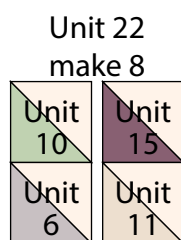


Fig. 26

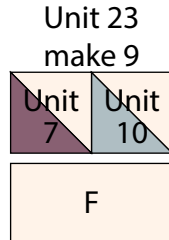


Fig. 27

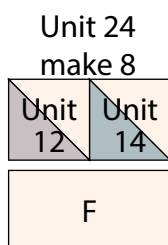


Fig. 28

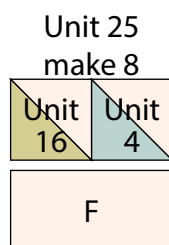


Fig. 29

7. Sew (1) Unit 17 square to the left side of (1) Unit 18 square to make the top row. Sew (1) Unit 1 square to the left side of (1) Unit 23 square to make the bottom row. Sew together the (2) rows lengthwise to make (1) 6 1/2" Block One square (Fig. 30). Repeat to make (9) Block One squares total.

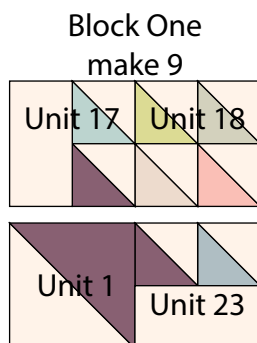


Fig. 30

8. Repeat Step 7 and refer to Figures 31-32 for component identification, placement and orientation to make (8) 6 1/2" Block Two squares and (8) 6 1/2" Block Three squares.

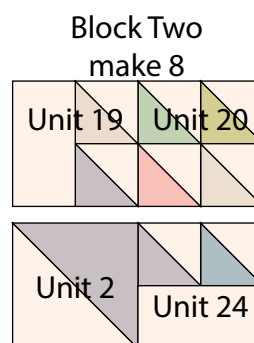


Fig. 31

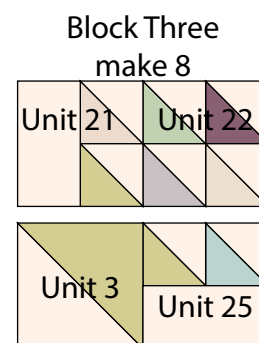


Fig. 32

9. Follow Figure 33 and sew (1) 5 1/2" Fabric D triangle, (1) 5 1/2" Fabric B triangle, (1) 5 1/2" Fabric E triangle and (1) 5 1/2" Fabric C triangle to the (4) sides of (1) 4 3/4" Fabric A square. Trim block to measure 6 1/2" square to make (1) Block Four square. Repeat to make (16) Block Four squares total.

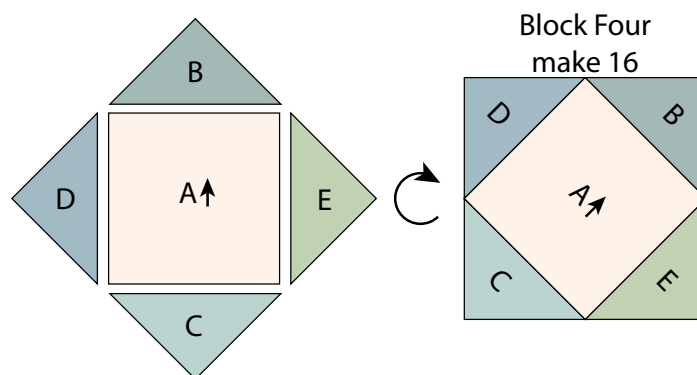


Fig. 33

# MARKET GARDEN

## Quilt 1

## Page 6

10. Sew (1) 5 1/8" Fabric E triangle to the top of (1) Block One square. Sew (1) 9 3/4" Fabric D triangle to the left side of the Block One square and (1) 9 3/4" Fabric C triangle to the right side to make Row One (Fig. 34 below).

11. Repeat Step 10 and refer to Figure 34 below for component identification, placement and orientation to make Row Two through Row Nine.

12. Sew together the (9) Rows, in numerical order from top to bottom, to make the Center Block.

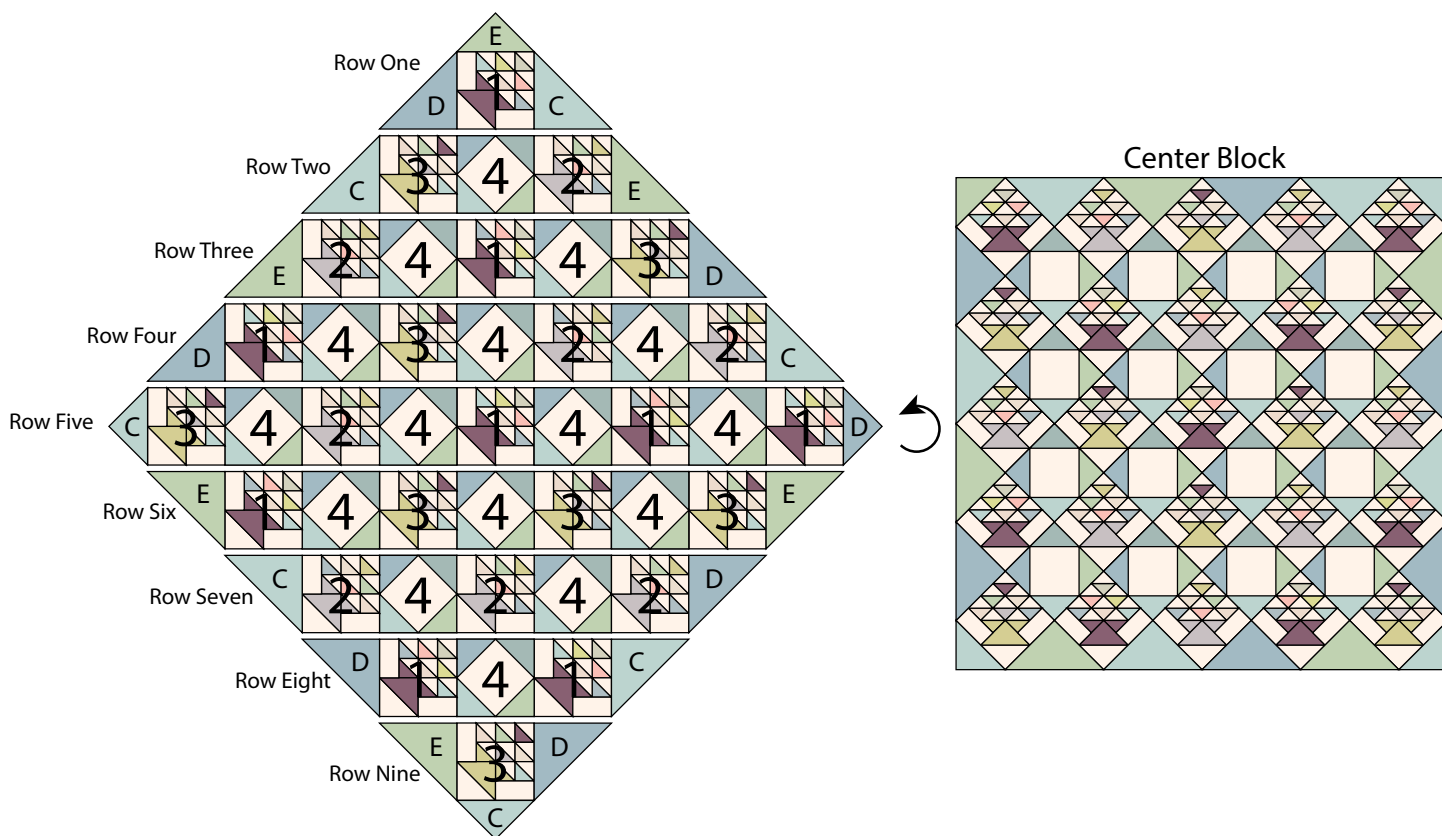


Fig. 34



# MARKET GARDEN

## Quilt 1

## Page 7

### Quilt Top Assembly

*(Follow the Quilt Layout while assembling the quilt top.)*

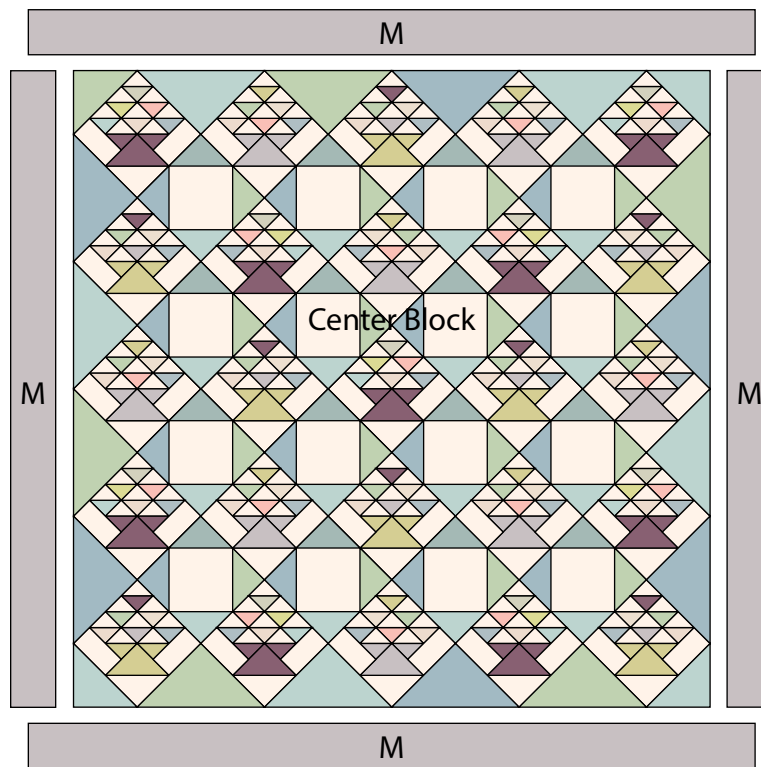
13. Measure the sides of the Center Block. Sew together (3) 3 ½" x WOF Fabric M strips end to end with diagonal seams. From the newly sewn strip cut (2) strips to that length. Sew (1) strip to each side of the Center Block.

14. Measure the top and bottom of the Center Block. Sew together (3) 3 ½" x WOF Fabric M strips end to end with diagonal seams. From the newly sewn strip cut (2) strips to that length. Sew (1) strip to the top and to the bottom of the Center Block to make the quilt top.

15. Layer and quilt as desired.

16. Sew the (5) 2 ½" x WOF Fabric H strips together, end to end with 45-degree seams, to make the binding. Fold this long strip in half lengthwise with wrong sides together and press.

17. Bind as desired.



Quilt Layout

*Every effort has been made to ensure that all projects are error free. All the information is presented in good faith, however no warranty can be given nor results guaranteed as we have no control over the execution of instructions. Therefore, we assume no responsibility for the use of this information or damages that may occur as a result. When errors are brought to our attention, we make every effort to correct and post a revision as soon as possible. Please make sure to check [www.henryglassfabrics.net](http://www.henryglassfabrics.net) for pattern updates prior to starting the project. We also recommend that you test the project prior to cutting for kits. Finally, all free projects are intended to remain free to you and are not for resale.*