

October Morning

Maple Leaves Lap Quilt

by Kim Diehl



Finished Quilt Size: 64½" x 64½"



Henry Glass & Co., Inc.



49 West 37th Street, New York, NY 10018

tel: 212-686-5194 • fax: 212-532-3525

Toll-free: 800-294-9495

www.henryglassfabrics.net

facebook

October Morning

Maple Leaves Lap Quilt

Finished Quilt Size: 64½" x 64½"

MATERIALS

Yardages are based on a 42" width of useable fabric after prewashing and removing selvages.

- 1 yard *each* of 4 assorted cream prints for patchwork, sashing, and inner border (9143-44; 9144-44; 9145-44; 9146-44)
- ¾ yard of green acorn thicket print for patchwork and binding (9136-66)
- ⅝ yard of teal autumn mandala print for patchwork and outer border (9139-77)
- 18 fat eighths (9" x 21") of assorted blue prints (4), green prints (4), orange prints (5), and brown prints (5), for patchwork (9126-33, 66; 9127-30, 33; 9128-33; 9129-33; 9130-33; 9131-66; 9132-66; 9133-66; 9135-30; 9136-30; 9137-30, 77; 9138-30; 9140-11; 9141-77; 9142-11)
- 4 yards of backing print (Kim suggests the orange nine-patch clusters print, 9138-30)
- 71" x 71" square of batting
- Standard sewing and quilting supplies

CUTTING

Cut all pieces across the width of the fabric in the order given unless otherwise noted. As you cut the patchwork pieces, please keep them organized into sets by color group to simplify the piecing steps.

From each of the 5 fat eighths of assorted brown prints, refer to the diagram to cut:

- 2 strips, 2½" x 21"; crosscut into 8 rectangles, 2½" x 4½" (combined total of 40), and 2 squares, 2½" x 2½" (combined total of 10)

1 strip, 2⅞" x 21"; from this strip, cut:

- 2 squares, 2⅞" x 2⅞" (combined total of 10); cut each square in half diagonally *once* to yield 2 triangles (combined total of 20)
- 1 rectangle, 2½" x 4½" (grand total of 45 with previously cut brown rectangles)
- 1 square, 2½" x 2½" (grand total of 15 with previously cut brown squares)
- 2 rectangles, 1¼" x 7½" (combined total of 10)

2½" x 4½"	2½" x 4½"	2½" x 4½"	2½" x 4½"	2½"
2½" x 4½"	2½" x 4½"	2½" x 4½"	2½" x 4½"	2½"
2⅞"	2⅞"	2½" x 4½"	2½"	1¼" x 7½"
				1¼" x 7½"

5 brown fat eighths

From each of the 5 fat eighths of assorted orange prints, refer to the diagram to cut:

- 2 strips, 2½" x 21"; crosscut into 8 rectangles, 2½" x 4½" (combined total of 40), and 2 squares, 2½" x 2½" (combined total of 10)

1 strip, 2⅞" x 21"; from this strip, cut:

- 2 squares, 2⅞" x 2⅞" (combined total of 10); cut each square in half diagonally *once* to yield 2 triangles (combined total of 20)
- 1 rectangle, 2½" x 4½" (grand total of 45 with previously cut orange rectangles)
- 1 square, 2½" x 2½" (grand total of 15 with previously cut orange squares)
- 2 rectangles, 1¼" x 7½" (combined total of 10)

2½" x 4½"	2½" x 4½"	2½" x 4½"	2½" x 4½"	2½"
2½" x 4½"	2½" x 4½"	2½" x 4½"	2½" x 4½"	2½"
2⅞"	2⅞"	2½" x 4½"	2½"	1¼" x 7½"
				1¼" x 7½"

5 orange fat eighths

From the teal autumn mandala print, cut:

1 strip, $2\frac{1}{2}" \times 42"$; crosscut into 8 rectangles, $2\frac{1}{2}" \times 4\frac{1}{2}"$

1 strip, $2\frac{7}{8}" \times 42"$; from this strip cut:

- 2 squares, $2\frac{7}{8}" \times 2\frac{7}{8}"$; cut each square in half diagonally *once* to yield 2 triangles (total of 4)
- 3 squares, $2\frac{1}{2}" \times 2\frac{1}{2}"$
- 2 rectangles, $1\frac{1}{4}" \times 7\frac{1}{2}"$

7 strips, $1\frac{1}{2}" \times 42"$

From each of the 4 fat eighths of assorted blue prints, refer to the diagram to cut:

2 strips, $2\frac{1}{2}" \times 21"$; crosscut into 8 rectangles, $2\frac{1}{2}" \times 4\frac{1}{2}"$ (combined total of 32, grand total of 40 with previously cut teal rectangles), and 2 squares, $2\frac{1}{2}" \times 2\frac{1}{2}"$ (combined total of 8, grand total of 11 with previously cut teal squares)

1 strip, $2\frac{7}{8}" \times 21"$; from this strip, cut:

- 2 squares, $2\frac{7}{8}" \times 2\frac{7}{8}"$ (combined total of 8, grand total of 10 with previously cut teal squares); cut each square in half diagonally *once* to yield 2 triangles (combined total of 16, grand total of 20 with previously cut teal triangles)
- 1 square, $2\frac{1}{2}" \times 2\frac{1}{2}"$ (combined total of 4, final total of 14 with all previously cut blue and teal squares)
- 2 rectangles, $1\frac{1}{4}" \times 7\frac{1}{2}"$ (combined total of 8, grand total of 10 with previously cut teal rectangles)

$2\frac{1}{2}" \times 4\frac{1}{2}"$	$2\frac{1}{2}" \times 4\frac{1}{2}"$	$2\frac{1}{2}" \times 4\frac{1}{2}"$	$2\frac{1}{2}" \times 4\frac{1}{2}"$	$2\frac{1}{2}"$
$2\frac{1}{2}" \times 4\frac{1}{2}"$	$2\frac{1}{2}" \times 4\frac{1}{2}"$	$2\frac{1}{2}" \times 4\frac{1}{2}"$	$2\frac{1}{2}" \times 4\frac{1}{2}"$	$2\frac{1}{2}"$
$2\frac{7}{8}"$	$2\frac{7}{8}"$	$2\frac{1}{2}"$	$1\frac{1}{4}" \times 7\frac{1}{2}"$	
			$1\frac{1}{4}" \times 7\frac{1}{2}"$	

4 blue fat eighths

From the green acorn thicket print, cut:

1 strip, $2\frac{1}{2}" \times 42"$; crosscut into 6 rectangles, $2\frac{1}{2}" \times 4\frac{1}{2}"$, and 2 squares, $2\frac{1}{2}" \times 2\frac{1}{2}"$

1 strip, $2\frac{7}{8}" \times 42"$; from this strip, cut:

- 1 square, $2\frac{7}{8}" \times 2\frac{7}{8}"$; cut the square in half diagonally *once* to yield 2 triangles
- 1 rectangle, $1\frac{1}{4}" \times 7\frac{1}{2}"$

7 binding strips, $2\frac{1}{2}" \times 42"$

From each of the 4 fat eighths of assorted green prints, refer to the diagram to cut:

2 strips, $2\frac{1}{2}" \times 21"$; crosscut into 6 rectangles, $2\frac{1}{2}" \times 4\frac{1}{2}"$ (combined total of 24, grand total of 30 with previously cut green rectangles)

1 strip, $2\frac{7}{8}" \times 21"$; from this strip, cut:

- 1 square, $2\frac{7}{8}" \times 2\frac{7}{8}"$ (combined total of 4, grand total of 5 with previously cut green square); cut the square in half diagonally *once* to yield 2 triangles (combined total of 8, grand total of 10 with previously cut green triangles)
- 2 squares, $2\frac{1}{2}" \times 2\frac{1}{2}"$ (combined total of 8, grand total of 10 with previously cut green squares)
- 1 rectangle, $1\frac{1}{4}" \times 7\frac{1}{2}"$ (combined total of 4, grand total of 5 with previously cut green rectangle)

$2\frac{1}{2}" \times 4\frac{1}{2}"$	$2\frac{1}{2}" \times 4\frac{1}{2}"$	$2\frac{1}{2}" \times 4\frac{1}{2}"$	$2\frac{1}{2}" \times 4\frac{1}{2}"$
$2\frac{1}{2}" \times 4\frac{1}{2}"$	$2\frac{1}{2}" \times 4\frac{1}{2}"$		
$2\frac{7}{8}"$	$2\frac{1}{2}"$	$2\frac{1}{2}"$	$1\frac{1}{4}" \times 7\frac{1}{2}"$

4 green fat eighths

From each of the 4 assorted cream prints, cut:

1 strip, $3" \times 42"$; from this strip, cut:

- 1 rectangle, $3" \times 10\frac{1}{2}"$
- 7 squares, $2\frac{7}{8}" \times 2\frac{7}{8}"$ (combined total of 28); cut each square in half diagonally *once* to yield 2 triangles (combined total of 56)

4 strips, $2\frac{1}{2}" \times 42"$; crosscut into 44 squares, $2\frac{1}{2}" \times 2\frac{1}{2}"$ (combined total of 176), and 11 rectangles, $2\frac{1}{2}" \times 4\frac{1}{2}"$ (combined total of 44)

1 additional strip, $2\frac{1}{2}" \times 42"$; from this strip, cut:

- 2 rectangles, $2\frac{1}{2}" \times 4\frac{1}{2}"$ (grand total of 52 with previously cut rectangles)
- 1 strip, $1\frac{1}{2}" \times 25"$

1 strip $5" \times 42"$; crosscut into 7 squares, $5" \times 5"$ (combined total of 28); cut each square in half diagonally *once* to yield 2 triangles (combined total of 56)

3 strips, $3" \times 42"$; crosscut into 9 rectangles, $3" \times 10\frac{1}{2}"$ (combined total of 36, grand total of 40 with previously cut rectangles), and 4 squares, $3" \times 3"$ (combined total of 16)

1 strip, $1\frac{1}{2}" \times 42"$; crosscut into 2 strips, $1\frac{1}{2}" \times 21"$

PIECING the Maple Leaf Blocks

Sew all pieces with right sides together and a $\frac{1}{4}$ " seam allowance unless otherwise noted. Press the seam allowances as indicated by the arrows or otherwise specified. Please note that you'll have a handful of extra patchwork pieces in the dark and cream colors; these have been included to give you added choices as you piece the blocks.

- 1 From the set of brown patchwork pieces, choosing the prints randomly, select:

- 6 rectangles, $2\frac{1}{2}$ " x $4\frac{1}{2}$ "
- 2 triangles measuring $2\frac{7}{8}$ "
- 1 rectangle, $1\frac{1}{4}$ " x $7\frac{1}{2}$ "
- 2 squares, $2\frac{1}{2}$ " x $2\frac{1}{2}$ "

From all assorted cream patchwork pieces, choosing the prints randomly, select:

- 7 squares, $2\frac{1}{2}$ " x $2\frac{1}{2}$ "
- 2 triangles measuring $2\frac{7}{8}$ "
- 2 triangles measuring 5"
- 2 rectangles, $2\frac{1}{2}$ " x $4\frac{1}{2}$ "

- 2 Use a pencil and an acrylic ruler to draw a diagonal sewing line from corner to corner on the wrong side of six of the cream $2\frac{1}{2}$ " squares. Layer a prepared cream square onto one end of a brown $2\frac{1}{2}$ " x $4\frac{1}{2}$ " rectangle as shown. Stitch the pair along the drawn line. Fold the resulting inner triangle open, aligning the corner with the corner of the brown rectangle. Press. Trim away the layers beneath the top triangle, leaving a $\frac{1}{4}$ " seam allowance. Repeat to piece a total of three leaf-point rectangles and three mirror-image leaf-point rectangles measuring $2\frac{1}{2}$ " x $4\frac{1}{2}$ ", including the seam allowances.



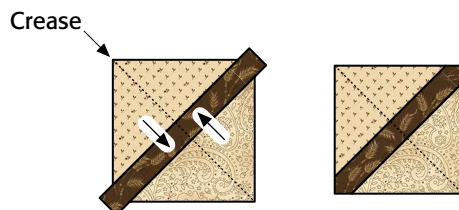
Make 3 units and
3 mirror-image units,
 $2\frac{1}{2}$ " x $4\frac{1}{2}$ ".

- 3 Layer together a $2\frac{7}{8}$ " brown and cream triangle. Stitch the pair along the long diagonal edges. Press. Trim away the dog-ear points. Repeat to piece a total of two leaf-point squares measuring $2\frac{1}{2}$ " square, including the seam allowances.



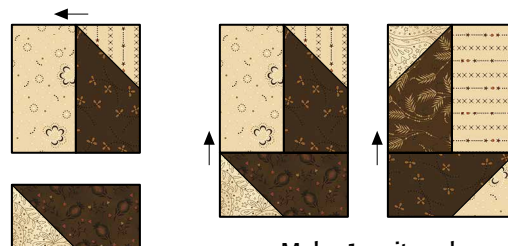
Make 2 units,
 $2\frac{1}{2}$ " x $2\frac{1}{2}$ ".

- 4 Fold the brown $1\frac{1}{4}$ " x $7\frac{1}{2}$ " rectangle in half cross-wise, right sides together, and finger press the center crease. In the same manner, fold each of the two cream 5" triangles in half and finger press the center crease. Sew a prepared triangle to each long side of the prepared brown rectangle, aligning the finger-pressed creases to perfectly center the pieces. Press. Use a rotary cutter and an acrylic ruler to trim the stem unit to $4\frac{1}{2}$ " square, including the seam allowances.



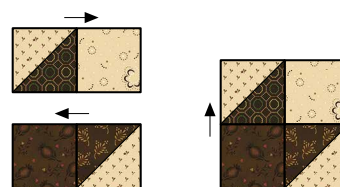
Finished stem unit,
 $4\frac{1}{2}$ " x $4\frac{1}{2}$ ".

- 5 Lay out one step 2 leaf-point rectangle, one mirror-image leaf-point rectangle, and one cream $2\frac{1}{2}$ " x $4\frac{1}{2}$ " rectangle in two horizontal rows as shown. Join rectangles in the top row. Press. Join the pieced top row unit to the bottom row rectangle to make a side leaf-point unit measuring $4\frac{1}{2}$ " x $6\frac{1}{2}$ ", including the seam allowances. Press. In the same manner, make a mirror-image side leaf-point unit.



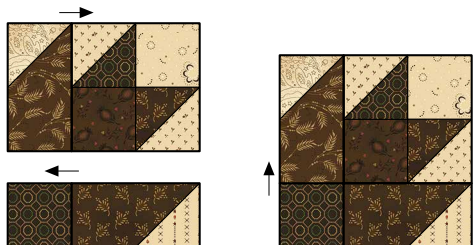
Make 1 unit and
1 mirror-image unit,
 $4\frac{1}{2}$ " x $6\frac{1}{2}$ ".

- 6 Lay out the two leaf-point squares from step 3, one brown $2\frac{1}{2}$ " square, and one cream $2\frac{1}{2}$ " square in two horizontal rows as shown. Join the squares in each row. Press. Join the rows. Press. The pieced patchwork unit should measure $4\frac{1}{2}$ " square, including the seam allowances.



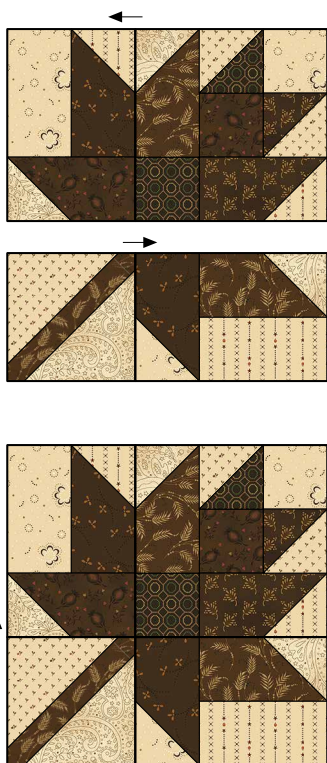
Make 1 patchwork unit,
 $4\frac{1}{2}$ " x $4\frac{1}{2}$ ".

- 7 Lay out the step 6 patchwork unit, one leaf-point rectangle and mirror-image leaf-point rectangle from step 2, and one brown $2\frac{1}{2}$ " square in two horizontal rows as shown. Join the pieces in each row. Press. Join the rows. Press. The pieced leaf-top corner unit should measure $6\frac{1}{2}$ " square, including the seam allowances.



Make 1 leaf-top corner unit,
 $6\frac{1}{2}$ " x $6\frac{1}{2}$ ".

- 8 Lay out the leaf-top corner unit, the side leaf-point unit and the mirror-image side leaf-point unit from step 5, the stem unit from step 4 in two horizontal rows as shown. Join the units in each row. Press. Join the rows. Press. The pieced Maple Leaf block should measure $10\frac{1}{2}$ " square, including the seam allowances.



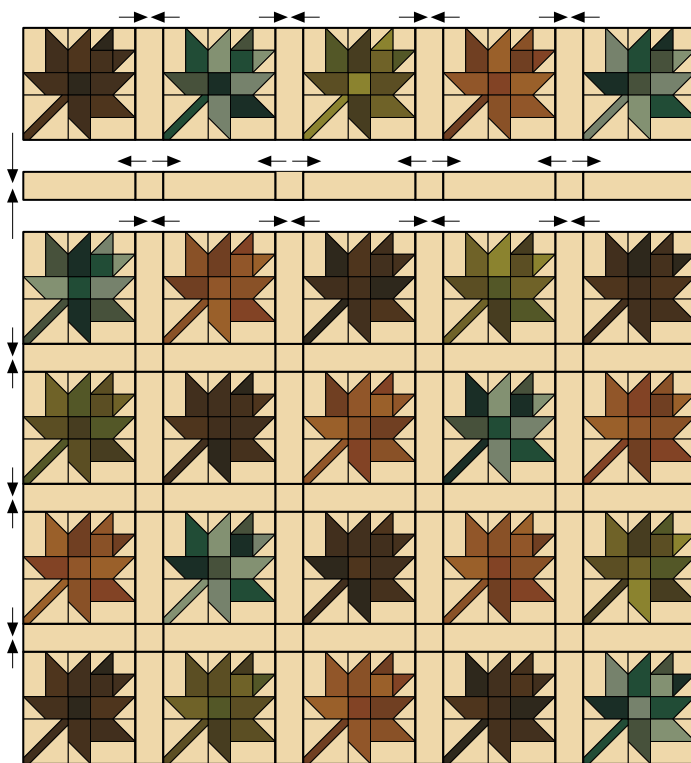
Maple Leaf block,
 $10\frac{1}{2}$ " x $10\frac{1}{2}$ "

- 9 Repeat steps 1–8 to piece a total of seven brown Maple Leaf blocks.

- 10 Substituting the orange, blue, and green patchwork sets for the brown prints, follow steps 1–8 to piece:
- 7 orange Maple Leaf blocks
 - 6 blue Maple Leaf blocks
 - 5 green Maple Leaf blocks

PIECING the Quilt Center

- 1 Using the assembly diagram as a guide (or creating your own arrangement of block colors), lay out five Maple Leaf blocks and four assorted cream 3 " x $10\frac{1}{2}$ " rectangles in alternating positions. Join the pieces. Press the seam allowances toward the cream rectangles. Repeat to piece a total of five block rows measuring $10\frac{1}{2}$ " x $60\frac{1}{2}$ ", including the seam allowances.
- 2 Choosing the prints randomly, lay out five cream 3 " x $10\frac{1}{2}$ " rectangles and four cream 3 " squares in alternating positions. Join the pieces. Press the seam allowances toward the rectangles. Repeat to piece a total of four sashing rows measuring 3 " x $60\frac{1}{2}$ ", including the seam allowances.
- 3 Referring to the assembly diagram, lay out the pieced block rows and sashing rows in alternating positions. Join the rows. Press. The pieced quilt center should measure $60\frac{1}{2}$ " square, including the seam allowances.



Quilt center, $60\frac{1}{2}$ " x $60\frac{1}{2}$ "

ADDING *the Inner and Outer Borders*

- 1 Choosing the prints randomly, select one cream $1\frac{1}{2}$ " x 25" strip and two cream $1\frac{1}{2}$ " x 21" strips. Join the strips end to end. Press the seam allowances to one side. Repeat to piece a total of four cream inner border strips.
- 2 Center and join a pieced inner border strip to the right and left side of the quilt center. Press the seam allowances toward the cream strips. Trim away any excess strip length. Repeat with the top and bottom edges of the quilt center. The quilt top should now measure $62\frac{1}{2}$ " square, including the seam allowances.

- 3 Join the seven teal autumn mandala $1\frac{1}{2}$ " x 42" strips together end to end. Press the seam allowances to one side. From this pieced strip, cut two $62\frac{1}{2}$ " lengths and two $64\frac{1}{2}$ " lengths. Join a $62\frac{1}{2}$ " strip to the right and left side of the quilt top. Press the seam allowances toward the teal strips. Join the $64\frac{1}{2}$ " strips to the remaining edges of the quilt top. Press the seam allowances toward the teal strips.

COMPLETING *the Quilt*

Layer and baste the quilt top, batting, and backing. Quilt the layers. Join the green acorn thicket $2\frac{1}{2}$ " x 42" binding strips to make one length, and use it to bind the quilt.

Every effort has been made to ensure that all projects are error free. All the information is presented in good faith, however no warranty can be given nor results guaranteed as we have no control over the execution of instructions. Therefore, we assume no responsibility for the use of this information or damages that may occur as a result. When errors are brought to our attention, we make every effort to correct and post a revision as soon as possible. Please make sure to check www.henryglassfabrics.com for pattern updates prior to starting the project. We also recommend that you test the project prior to cutting for kits. Finally, all free projects are intended to remain free to you and are not for resale or other forms of distribution.



©2020 Kim Diehl

October Morning *Fabrics in the Collection*



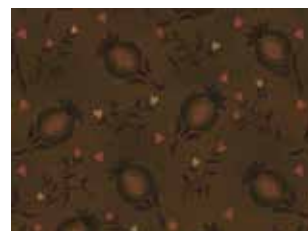
9126-33
Waving Wheat, Brown



9126-66
Waving Wheat, Green



9127-30
Pomegranate Sprays, Orange



9127-33
Pomegranate Sprays, Brown



9128-33
Berry Blooms, Brown



9129-33
Daisy Stems, Brown



9130-33
Dotted Hexies, Brown



9131-66
Garden Bramble, Green



9132-66
Pressed Leaves, Green



9133-66
Acorn Blossoms, Green



9135-30
Trellis, Orange



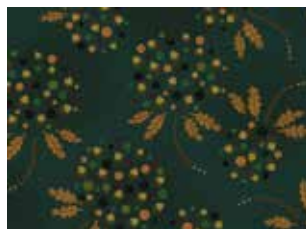
9136-30
Acorn Thicket, Orange



9136-66
Acorn Thicket, Green



9137-30
Meadow, Orange



9137-77
Meadow, Teal



9138-30
Nine-Patch Clusters, Orange



9139-77
Autumn Mandala, Teal



9140-11
Tossed Maple Leaves, Blue



9141-77
Acorn Branches, Blue



9142-11
Infinity Sprays, Blue



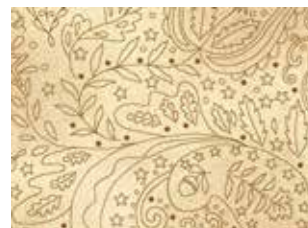
9143-44
Harvest Stripe, Cream



9144-44
October Garden, Cream



9145-44
Star Sprigs, Cream



9146-44
Autumn Paisley, Cream