

# Let it Snow Flannel

A Free Project Sheet  
NOT FOR RESALE

By Janet Nesbitt

2 ply  
flannel

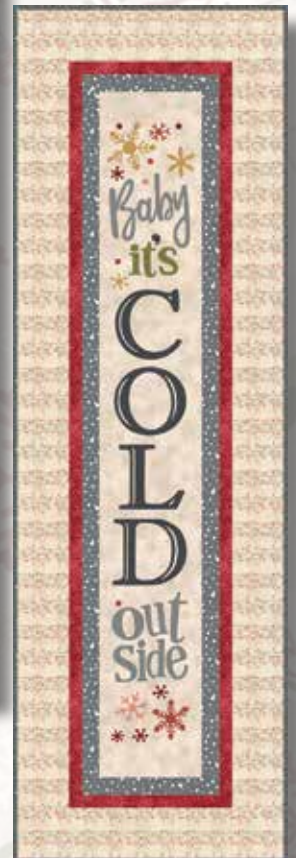
Quilts Design by Janet Nesbitt



Quilt #1



Quilt #2



Quilt #3

## Quilt Set 1

Skill Level: Advanced Beginner (Quilts #1 & #2)

Skill Level: Beginner (Quilts #3)



Henry Glass & Co., Inc.



facebook

Finished Quilt #1 & #2 Size: 52" x 64"

Finished Quilt #3 Size: 15 1/2" x 49 1/2"

49 West 37th Street, New York, NY 10018

tel: 212-686-5194 fax: 212-532-3525

Toll Free: 800-294-9495

[www.henryglassfabrics.net](http://www.henryglassfabrics.net)

Please check our website for pattern updates before starting this project.



# LET IT SNOW FLANNEL

Finished Quilt #1 & #2 Size: 52" x 64"

Finished Quilt #3 Size: 15 ½" x 49 ½"

Quilt Set 1

## Fabrics in the Collection



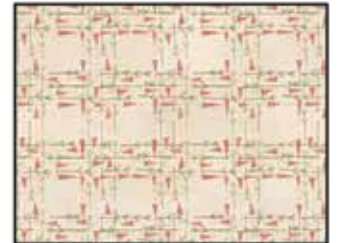
Allover Novelty  
Cream – 2878F-44



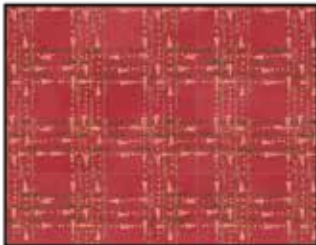
Allover Novelty  
Red – 2878F-88



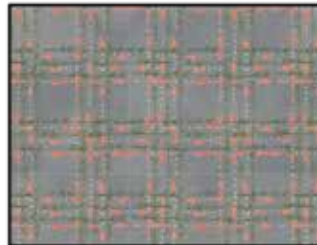
Allover Novelty  
Charcoal – 2878F-99



Carrots & Twigs  
Cream – 2879F-44



Carrots & Twigs  
Red – 2879F-88



Carrots & Twigs  
Gray – 2879F-91



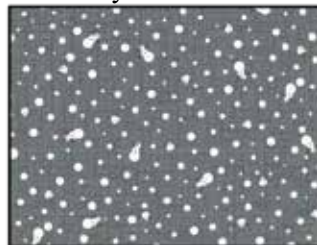
Tossed Snowflakes  
Cream – 2880F-44



Tossed Snowflakes  
Dark Blue – 2880F-77



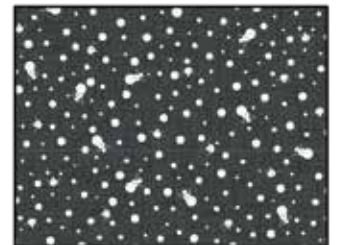
Tossed Snowflakes  
Red – 2880F-88



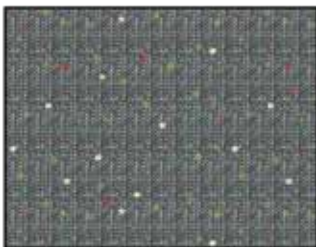
Mini Snowman Toss  
Light Blue – 2881F-17



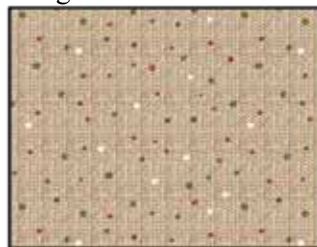
Mini Snowman Toss  
Cream – 2881F-44



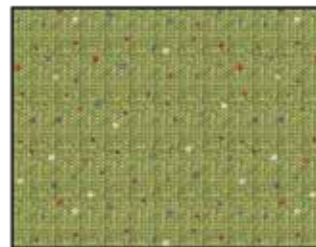
Mini Snowman Toss  
Dark Blue – 2881F-77



Sweater Dots  
Light Blue – 2882F-17



Sweater Dots  
Cream – 2882F-44



Sweater Dots  
Green – 2882F-66



Star Texture  
Cream – 2884F-44



Star Texture  
Green – 2884F-66



Star Texture  
Red – 2884F-88



Let it Snow Panel 24 x 44  
Cream – 2885FP-44

# LET IT SNOW FLANNEL

Quilt Set 1

Page 3

## Quilt #1 & Quilt #2 Materials

**Note:** Fabric requirements are for each quilt.

1 panel	Let It Snow Panel 24 x 44 - Cream (A)	2885FP-44
1 ¼ yards	Mini Snowman Toss - Dark Blue (B)	2881F-77*
¾ yard	Sweater Dots - Green (C)	2882F-66
¾ yard	Sweater Dots - Cream (D)	2882F-44
½ yard	Allover Novelty - Cream (E)	2878F-44
½ yard	Sweater Dots - Light Blue (F)	2882F-17
¼ yard	Allover Novelty - Red (G)	2878F-88
¼ yard	Star Texture - Cream (H)	2884F-44
¼ yard	Carrots & Twigs - Cream (I)	2879F-44
⅔ yard	Star Texture - Green (J)	2884F-66
¾ yard	Carrots & Twigs - Gray (K)	2879F-91
½ yard	Tossed Snowflakes - Cream (L)	2880F-44
¼ yard	Tossed Snowflakes - Red (M)	2880F-88
¼ yard	Carrots & Twigs - Red (N)	2879F-88
½ yard	Mini Snowman Toss - Cream (O)	2881F-44
½ yard	Star Texture - Red (P)	2884F-88
¼ yard	Allover Novelty - Charcoal (Q)	2878F-99
¼ yard	Tossed Snowflakes - Dark Blue (R)	2880F-77
4 yards	Allover Novelty - Cream (Backing)	2878F-44

\*Includes binding

## Quilt #1 & Quilt #2 Cutting Instructions

*Please note: All strips are cut across the width of fabric (WOF) from selvage to selvage edge unless otherwise noted.*

### From the Let It Snow Panel 24 x 44 - Cream (A):

- Fussy cut (1) 15 ½" x 16 ½" rectangle, centered on a word section in center of panel.

### From the Mini Snowman Toss - Dark Blue (B), cut:

- (3) 2 ½" x WOF strips. Sew the strips together end to end with diagonal seams and cut (2) 2 ½" x 60 ½" strips.
- (3) 2 ½" x WOF strips. Sew the strips together end to end with diagonal seams and cut (2) 2 ½" x 52 ½" strips.
- (1) 2 ½" x WOF strip. Sub-cut (2) 2 ½" x 16 ½" strips.
- (1) 2" x WOF strip. Sub-cut (2) 2" x 19 ½" strips.
- (6) 2 ½" x WOF strips for the binding.

### From the Sweater Dots - Green (C), cut:

- (1) 6 ½" x WOF strip. Sub-cut (6) 6 ½" squares.
- (1) 2 ½" x WOF strip. Sub-cut (8) 2 ½" squares.

### From the Sweater Dots - Cream (D), cut:

- (2) 6 ½" x WOF strips. Sub-cut (8) 6 ½" squares.
- (5) 2 ½" x WOF strips. Sub-cut (68) 2 ½" squares.

### From the Allover Novelty - Cream (E), cut:

- (2) 6 ½" x WOF strips. Sub-cut (10) 6 ½" squares.

### From the Sweater Dots - Light Blue (F), cut:

- (1) 6 ½" square.
- (3) 2 ½" x WOF strips. Sub-cut (36) 2 ½" squares.

### From the Allover Novelty - Red (G), cut:

- (1) 6 ½" x WOF strip. Sub-cut (2) 6 ½" squares.

### From the Star Texture - Cream (H), cut:

- (1) 6 ½" x WOF strip. Sub-cut (4) 6 ½" squares and (8) 2 ½" squares.

### From the Carrots & Twigs - Cream (I), cut:

- (1) 6 ½" x WOF strip. Sub-cut (5) 6 ½" squares.

### From the Star Texture - Green (J), cut:

- (2) 6 ½" x WOF strips. Sub-cut (7) 6 ½" squares.
- (3) 2 ½" x WOF strips. Sub-cut (36) 2 ½" squares.

### From the Carrots & Twigs - Gray (K), cut:

- (1) 6 ½" x WOF strip. Sub-cut (6) 6 ½" squares.
- (1) 2 ½" x WOF strip. Sub-cut (16) 2 ½" squares.

### From the Tossed Snowflakes - Cream (L), cut:

- (1) 6 ½" x WOF strip. Sub-cut (2) 6 ½" squares.
- (2) 2 ½" x WOF strips. Sub-cut (32) 2 ½" squares.

### From the Tossed Snowflakes - Red (M), cut:

- (1) 6 ½" x WOF strip. Sub-cut (4) 6 ½" squares and (8) 2 ½" squares.

### From the Carrots & Twigs - Red (N), cut:

- (1) 6 ½" x WOF strip. Sub-cut (1) 6 ½" square. From the remaining fabric cut (16) 2 ½" squares.

### From the Mini Snowman Toss - Cream (O), cut:

- (1) 6 ½" x WOF strip. Sub-cut (6) 6 ½" squares.
- (3) 2 ½" x WOF strips. Sub-cut (36) 2 ½" squares.

### From the Star Texture - Red (P), cut:

- (1) 6 ½" x WOF strip. Sub-cut (2) 6 ½" squares.
- (2) 2 ½" x WOF strips. Sub-cut (20) 2 ½" squares.

### From the Allover Novelty - Charcoal (Q), cut:

- (1) 6 ½" x WOF strip. Sub-cut (5) 6 ½" squares.

### From the Tossed Snowflakes - Dark Blue (R), cut:

- (1) 6 ½" x WOF strip. Sub-cut (2) 6 ½" squares.

### From the Allover Novelty - Cream (Backing), cut:

- (2) 72" x WOF strips for the backing. Sew the strips together and trim to make the 60" x 72" back.

# LET IT SNOW FLANNEL

Quilt Set 1

Page 4

## Quilt #1 & Quilt #2 Block Assembly

*Note: Pay attention to the unit orientations when assembling the various components. Use a 1/4" seam allowance with right sides together (RST) unless otherwise noted.*

1. Place (1) 2 1/2" Fabric D square on the top left corner of (1) 6 1/2" Fabric C square, right sides together (Fig. 1). Sew across the diagonal of the smaller square from the upper right corner to the lower left corner (Fig. 1). Flip open the triangle formed and press. Trim away the excess fabric from behind the triangle 1/4" away from the sewn seam (Fig. 2).

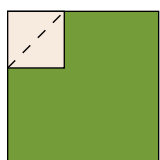


Fig. 1

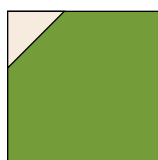


Fig. 2

2. Follow Figure 3 for the seam direction to add a 2 1/2" Fabric D square to each of the remaining corners of the 6 1/2" Fabric C square to make (1) Block One square (Fig. 4).

3. Repeat Steps 1-2 to make (6) Block One squares total.

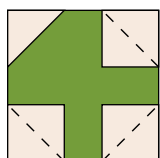


Fig. 3

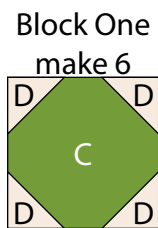


Fig. 4

4. Repeat Steps 1-2 and refer to Figures 5-22 for fabric identification, placement and seam direction to make the indicated number of block squares for Block Two through Block Nineteen. *Note: There will be (71) block squares total.*

Block Two  
make 8

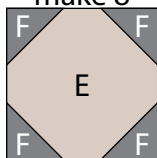


Fig. 5

Block Three  
make 2

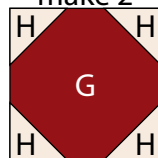


Fig. 6

Block Four  
make 5

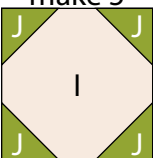


Fig. 7

Block Five  
make 6

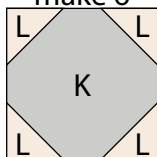


Fig. 8

Block Six  
make 2

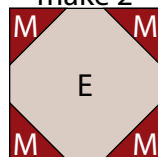


Fig. 9

Block Seven  
make 7

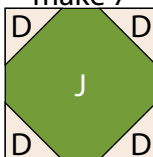


Fig. 10

Block Eight  
make 4

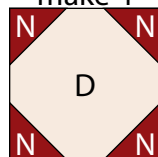


Fig. 11

Block Nine  
make 5

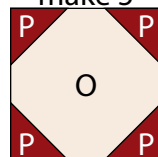


Fig. 12

Block Ten  
make 2

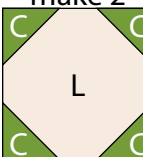


Fig. 13

Block Eleven  
make 4

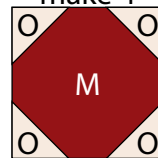


Fig. 14

Block Twelve  
make 4

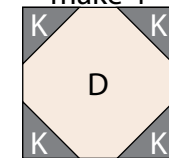


Fig. 15

Block Thirteen  
make 5

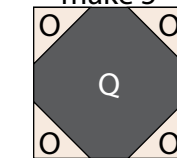


Fig. 16

Block Fourteen  
make 1

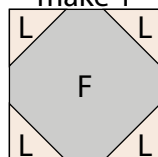


Fig. 17

Block Fifteen  
make 1

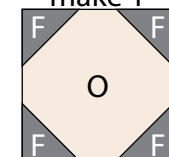


Fig. 18

Block Sixteen  
make 1

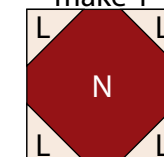


Fig. 19

Block Seventeen  
make 4

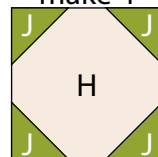


Fig. 20

Block Eighteen  
make 2

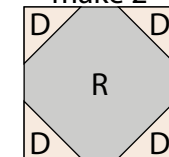


Fig. 21

Block Nineteen  
make 2

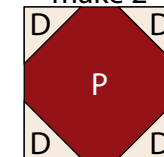


Fig. 22

5. Sew (1) 2 1/2" x 16 1/2" Fabric B strip to each side of the 15 1/2" x 16 1/2" Fabric A rectangle. Sew (1) 2" x 19 1/2" Fabric B strip to the top and to the bottom of the Fabric A rectangle to make (1) Unit 1 square (Fig. 23). **Trim the block to measure 18 1/2" x 18 1/2".**

Unit 1

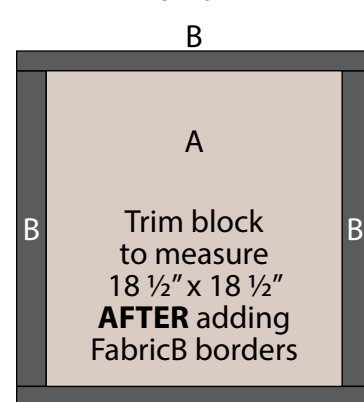


Fig. 23

# LET IT SNOW FLANNEL

Quilt Set 1

Page 5

6. Sew together (1) Unit 5 square, (1) Unit 12 square and (1) Unit 7 square, in that order from top to bottom. Sew the newly sewn strip to the left side of the Unit 1 square (Fig. 24).

7. Sew together (12) assorted Block squares into a 4 x 3 matrix. Sew the newly sewn rectangle to the right side of the Unit 1 square to make Row Seven for use in Center Block 1 (Fig. 24).

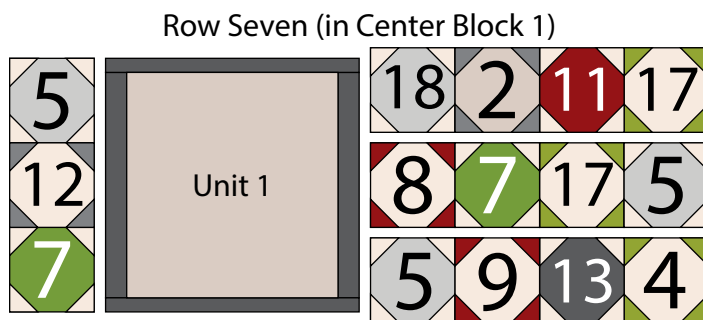


Fig. 24

8. Sew together (8) assorted Block squares together to make Row One (Fig. 25). Repeat to make Row Two through Row Six and Row Eight.

9. Sew together the (8) Rows from Steps 7-8, lengthwise and in numerical order from top to bottom, to make the 48 1/2" x 60 1/2" Center Block 1 (Fig. 25).

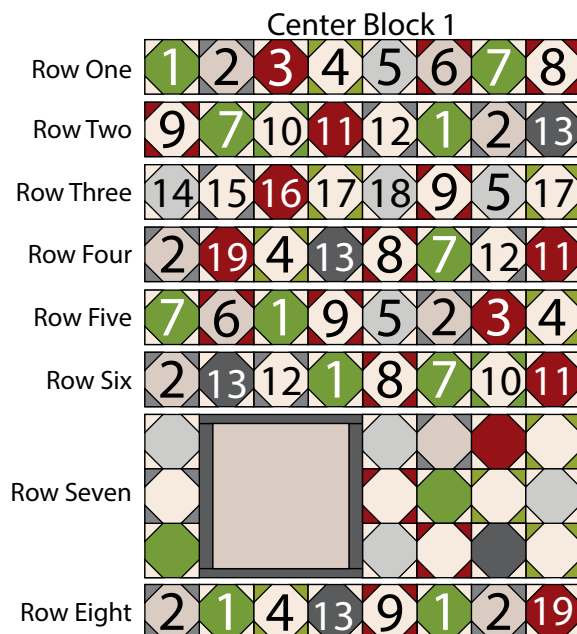


Fig. 25

## Quilt Top 1 Assembly

(Follow the Quilt 1 Layout in Figure 26 while assembling the quilt top.)

10. Sew (1) 2 1/2" x 60 1/2" Fabric B strip to each side of the Center Block. Sew (1) 2 1/2" x 52 1/2" Fabric B strip to the top and to the bottom of the Center Block to make the quilt top.

11. Layer and quilt as desired.

12. Sew the (6) 2 1/2" x WOF Fabric B strips together, end to end with 45-degree seams, to make the binding. Fold this long strip in half lengthwise with wrong sides together and press.

13. Bind as desired.

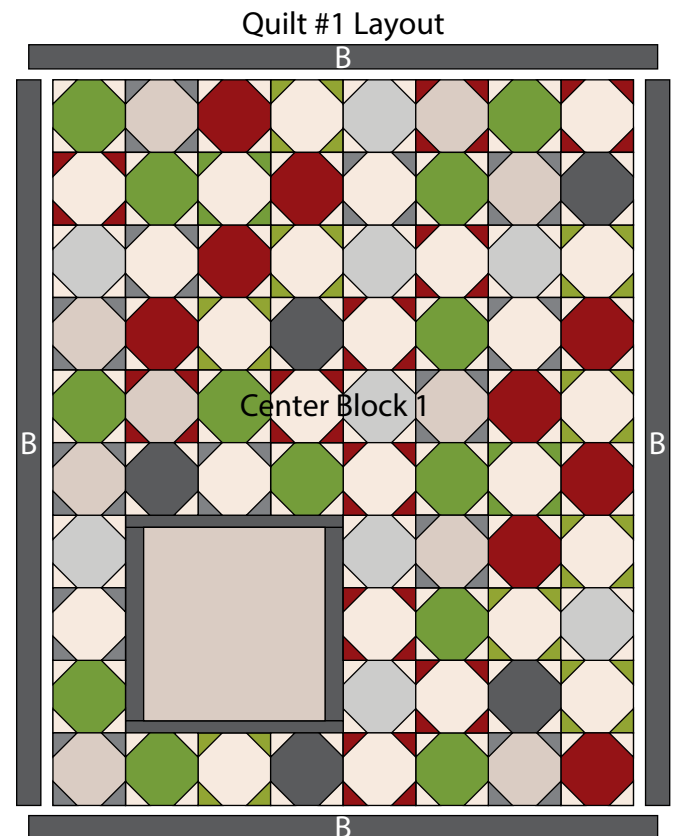


Fig. 26



# LET IT SNOW FLANNEL

Quilt Set 1

Page 6

14. Sew together (1) Unit 7 square, (1) Unit 12 square and (1) Unit 5 square, in that order from top to bottom. Sew the newly sewn strip to the right side of the Unit 1 square (Fig. 27).

15. Sew together (12) assorted Block squares into a 4 x 3 matrix. Sew the newly sewn rectangle to the left side of the Unit 1 square to make Row Two for use in Center Block 2 (Fig. 27).

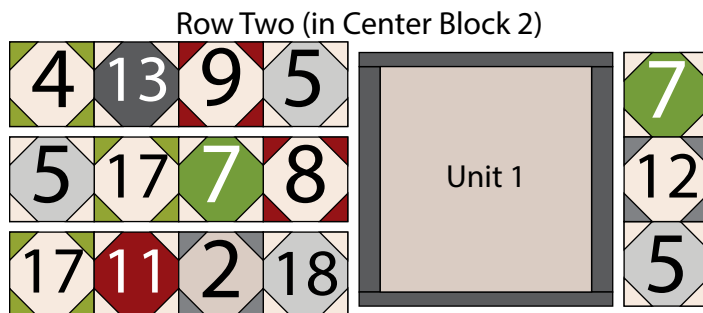


Fig. 27

16. Sew together (8) assorted Block squares together to make Row One (Fig. 28). Repeat to make Row Three through Row Eight.

17. Sew together the (8) Rows from Steps 15-16, lengthwise and in numerical order from top to bottom, to make the 48 1/2" x 60 1/2" Center Block 2 (Fig. 28).

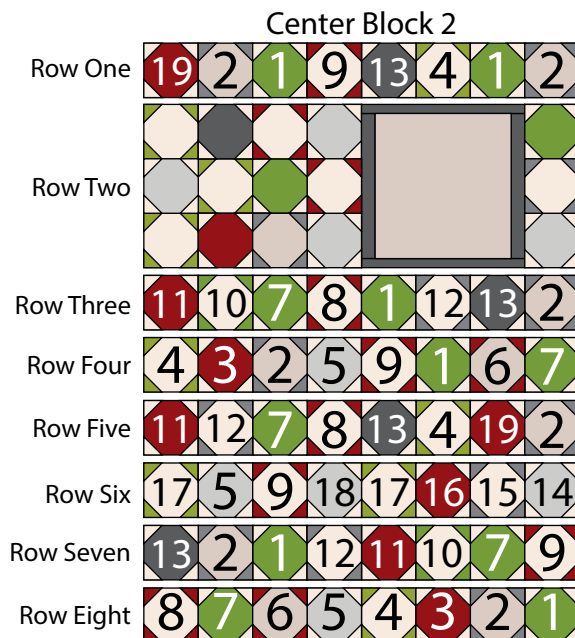


Fig. 28

## Quilt Top #2 Assembly

(Follow the Quilt 2 Layout in Figure 29 while assembling the quilt top.)

18. Sew (1) 2 1/2" x 60 1/2" Fabric B strip to each side of the Center Block. Sew (1) 2 1/2" x 52 1/2" Fabric B strip to the top and to the bottom of the Center Block to make the quilt top.

19. Layer and quilt as desired.

20. Sew the (6) 2 1/2" x WOF Fabric B strips together, end to end with 45-degree seams, to make the binding. Fold this long strip in half lengthwise with wrong sides together and press.

21. Bind as desired.

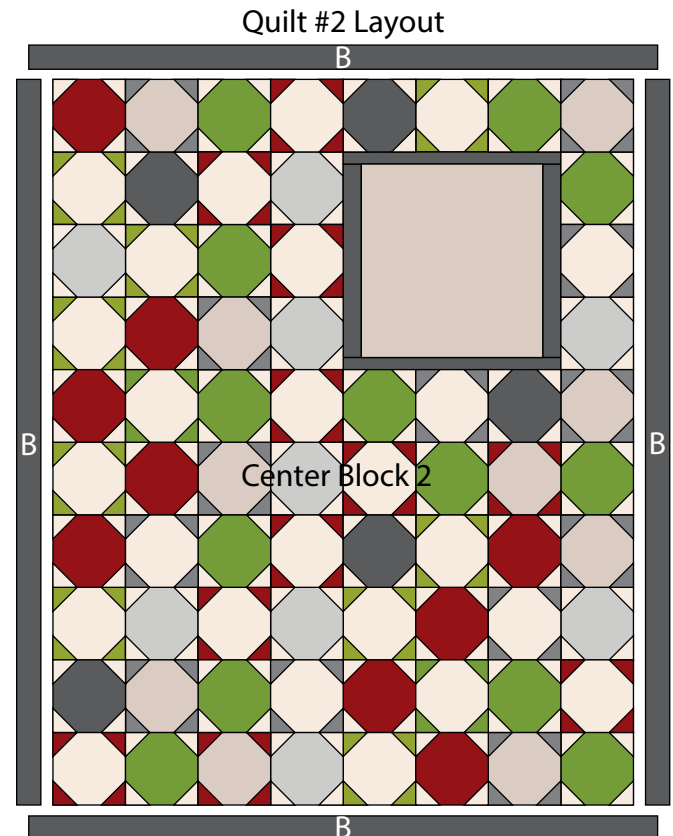


Fig. 29

# LET IT SNOW FLANNEL

Quilt Set 1

Page 7

## Quilt #3 Materials

1 panel	Let It Snow Panel 24 x 44 - Cream (A)	2885FP-44
¼ yard	Mini Snowman Toss - Light Blue (B)	2881F-17
¼ yard	Tossed Snowflakes - Red (C)	2880F-88
½ yard	Carrots & Twigs - Cream (D)	2879F-44
¾ yard	Sweater Dots - Light Blue (E)	2882F-17*
1 ⅔ yards	Mini Snowman Toss - Cream (Backing)	2881F-44

\*Includes binding

## Quilt #3 Cutting Instructions

Please note: All strips are cut across the width of fabric (WOF) from selvage to selvage edge unless otherwise noted.

### From the It Snow Panel 24 x 44 - Cream (A):

- Fussy cut (1) 6 ½" x 40 ½" WOF strip, centered on a long side section of the panel.

### From the Mini Snowman Toss - Light Blue (B), cut:

- (2) 2" x 40 ½" WOF strips.
- (1) 2" x WOF strip. Sub-cut (2) 2" x 9 ½" strips.

### From the Tossed Snowflakes - Red (C), cut:

- (2) 1 ¼" x 42 ½" WOF strips, piece as needed.
- (1) 1 ¼" x WOF strip. Sub-cut (2) 1 ¼" x 10" strips.

### From the Carrots & Twigs - Cream (D), cut:

- (3) 3 ½" x WOF strips. Sew the strips together end to end with diagonal seams and cut (2) 3 ½" x 44" strips.
- (1) 3 ½" x WOF strip. Sub-cut (2) 3 ½" x 16" strips.

### From the Sweater Dots - Light Blue (E), cut:

- (4) 2 ½" x WOF strips for the binding.

### From the Mini Snowman Toss - Cream (Backing), cut:

- (1) 24" x 58" WOF strip for the backing

## Quilt #3 Assembly

**Note:** Pay attention to the unit orientations when assembling the various components. Use a ¼" seam allowance with right sides together (RST) unless otherwise noted.

22. Sew (1) 2" x 40 ½" Fabric B strip to each side of the 6 ½" x 40 ½" Fabric A strip lengthwise. Sew (1) 2" x 9 ½" Fabric B strip to the top and to the bottom of the Fabric A strip to make (1) Unit 2 strip (Fig. 30). **Trim the block to measure 8 ½" x 42 ½".**

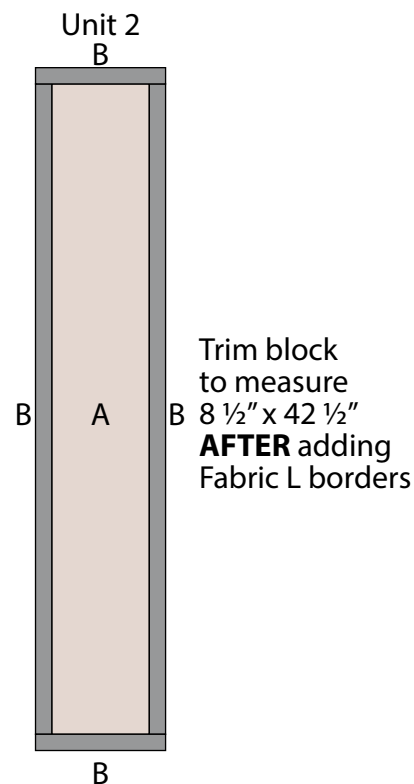


Fig. 30

23. Sew (1)  $1\frac{1}{4}$ " x  $42\frac{1}{2}$ " Fabric C strip to each side of the Unit 2 strip. Sew (1)  $1\frac{1}{4}$ " x 10" Fabric C strip to the top and to the bottom of the Unit 2 strip to make the Unit 3 strip (Fig. 31).

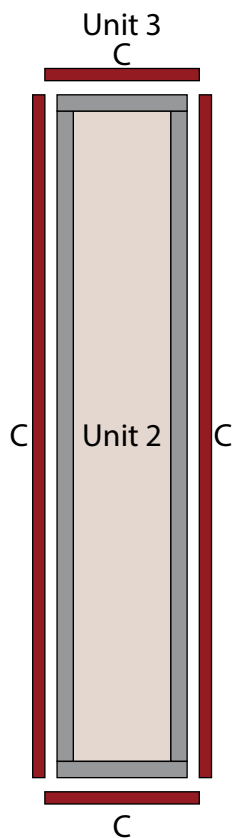


Fig. 31

24. Sew (1)  $3\frac{1}{2}$ " x 44" Fabric D strip to each side of the Unit 3 strip. Sew (1)  $3\frac{1}{2}$ " x 16" Fabric D strip to the top and to the bottom of the Unit 3 strip to make the quilt top (Fig. 32).

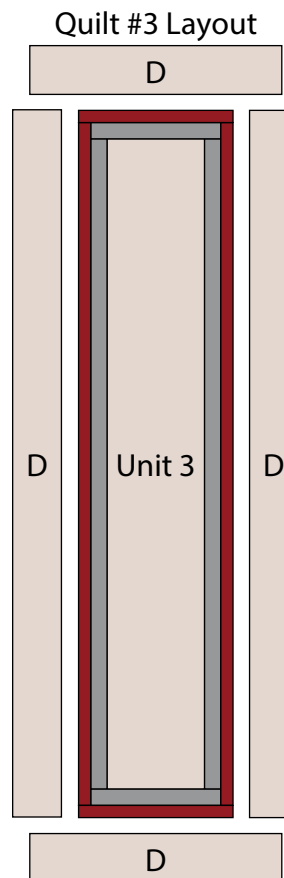


Fig. 32

25. Layer and quilt as desired.

26. Sew the (4)  $2\frac{1}{2}$ " x WOF Fabric E strips together, end to end with 45-degree seams, to make the binding. Fold this long strip in half lengthwise with wrong sides together and press.

27. Bind as desired.