

Let it Snow Flannel

• A Free Project Sheet •
• NOT FOR RESALE •

By Janet Nesbitt

2 ply
flannel

Quilt Design by Janet Nesbitt



Quilt 2

Skill Level: Advanced Beginner



Henry Glass & Co., Inc.



facebook

Finished Quilt Size: 62" x 81"
49 West 37th Street, New York, NY 10018
tel: 212-686-5194 fax: 212-532-3525
Toll Free: 800-294-9495
www.henryglassfabrics.net
Please check our website for pattern updates before starting this project.

LET IT SNOW FLANNEL Quilt 2

Fabrics in the Collection



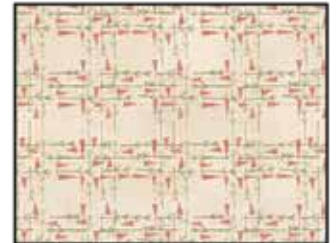
Allover Novelty
Cream – 2878F-44



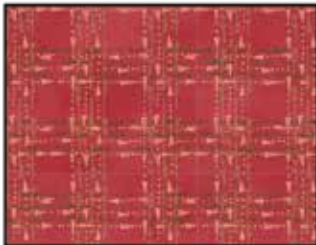
Allover Novelty
Red – 2878F-88



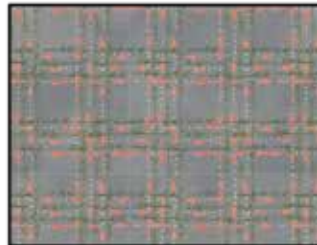
Allover Novelty
Charcoal – 2878F-99



Carrots & Twigs
Cream – 2879F-44



Carrots & Twigs
Red – 2879F-88



Carrots & Twigs
Gray – 2879F-91



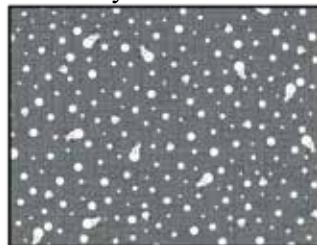
Tossed Snowflakes
Cream – 2880F-44



Tossed Snowflakes
Dark Blue – 2880F-77



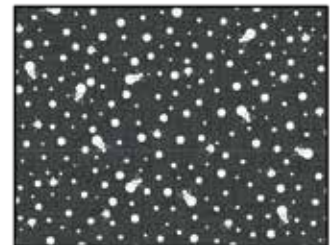
Tossed Snowflakes
Red – 2880F-88



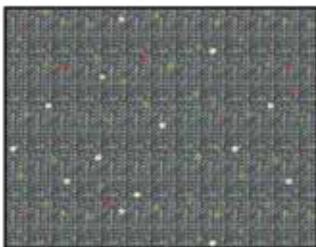
Mini Snowman Toss
Light Blue – 2881F-17



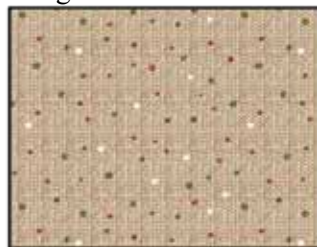
Mini Snowman Toss
Cream – 2881F-44



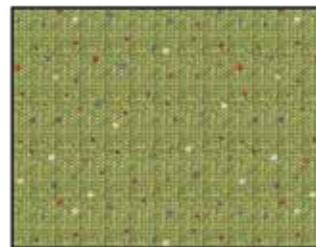
Mini Snowman Toss
Dark Blue – 2881F-77



Sweater Dots
Light Blue – 2882F-17



Sweater Dots
Cream – 2882F-44



Sweater Dots
Green – 2882F-66



Star Texture
Cream – 2884F-44



Star Texture
Green – 2884F-66



Star Texture
Red – 2884F-88



Let it Snow Panel 24 x 44
Cream – 2885FP-44

LET IT SNOW FLANNEL

Quilt 2

Page 3

Materials

¼ yard	Allover Novelty - Red (A)	2878F-88
1 ¼ yards	Carrots & Twigs - Red (B)	2879F-88
1 ⅓ yards	Mini Snowman Toss - Cream (C)	2881F-44
¼ yard	Allover Novelty - Charcoal (D)	2878F-99
1 ¼ yards	Sweater Dots - Light Blue (E)	2882F-17
1 ⅓ yards	Tossed Snowflakes - Cream (F)	2880F-44
¼ yard	Sweater Dots - Green (G)	2882F-66
1 ¼ yards	Star Texture - Green (H)	2884F-66
1 ⅓ yards	Star Texture - Cream (I)	2884F-44
1 ⅓ yards	Carrots & Twigs - Cream (J)	2879F-44
⅔ yard	Tossed Snowflakes - Red (K)	2880F-88*
5 yards	Allover Novelty - Cream (Backing)	2878F-44

*Includes binding

Cutting Instructions

Please note: All strips are cut across the width of fabric (WOF) from selvage to selvage edge unless otherwise noted.

From the Allover Novelty - Red (A), cut:

- (1) 5 ½" x WOF strip. Sub-cut (4) 5 ½" squares.

From the Carrots & Twigs - Red (B), cut:

- (3) 6 ½" x WOF strips. Sub-cut (16) 6 ½" squares.
- (6) 3 ¼" x WOF strips. Sub-cut (32) 3 ¼" x 6 ½" strips.

From the Mini Snowman Toss - Cream (C), cut:

- (6) 4 ½" x WOF strips. Sub-cut (48) 4 ½" squares.
- (4) 2 ½" x WOF strips. Sub-cut (64) 2 ½" squares.
- (2) 1" x WOF strips. Sub-cut (8) 1" x 5 ½" strips.
- (4) 1" x WOF strips. Sub-cut (24) 1" x 6 ½" strips.

From the Allover Novelty - Charcoal (D), cut:

- (1) 5 ½" x WOF strip. Sub-cut (4) 5 ½" squares.

From the Sweater Dots - Light Blue (E), cut:

- (3) 6 ½" x WOF strips. Sub-cut (16) 6 ½" squares.
- (6) 3 ¼" x WOF strips. Sub-cut (32) 3 ¼" x 6 ½" strips.

From the Tossed Snowflakes - Cream (F), cut:

- (6) 4 ½" x WOF strips. Sub-cut (48) 4 ½" squares.
- (4) 2 ½" x WOF strips. Sub-cut (64) 2 ½" squares.
- (2) 1" x WOF strips. Sub-cut (8) 1" x 5 ½" strips.
- (4) 1" x WOF strips. Sub-cut (24) 1" x 6 ½" strips.

From the Sweater Dots - Green (G), cut:

- (1) 5 ½" x WOF strip. Sub-cut (4) 5 ½" squares.

From the Star Texture - Green (H), cut:

- (3) 6 ½" x WOF strips. Sub-cut (16) 6 ½" squares.
- (6) 3 ¼" x WOF strips. Sub-cut (32) 3 ¼" x 6 ½" strips.

From the Star Texture - Cream (I), cut:

- (6) 4 ½" x WOF strips. Sub-cut (48) 4 ½" squares.
- (4) 2 ½" x WOF strips. Sub-cut (64) 2 ½" squares.
- (2) 1" x WOF strips. Sub-cut (8) 1" x 5 ½" strips.
- (4) 1" x WOF strips. Sub-cut (24) 1" x 6 ½" strips.

From the Carrots & Twigs - Cream (J), cut:

- (4) 3 ½" x WOF strips. Sew the strips together end to end with diagonal seams and cut (2) 3 ½" x 75 ½" strips.
- (4) 3 ½" x WOF strips. Sew the strips together end to end with diagonal seams and cut (2) 3 ½" x 62 ½" strips.
- (5) 1 ½" x WOF strips. Sew the strips together end to end with diagonal seams and cut (3) 1 ½" x 56 ½" strips.
- (4) 1 ½" x WOF strips. Sub-cut (8) 1 ½" x 18 ½" strips.

From the Tossed Snowflakes - Red (K), cut:

- (8) 2 ½" x WOF strips for the binding.

From the Allover Novelty - Cream (Backing), cut:

- (2) 89" x WOF strips for the backing. Sew the strips together and trim to make the 70" x 89" back.

Block Assembly

Note: Pay attention to the unit orientations when assembling the various components. Use a ¼" seam allowance with right sides together (RST) unless otherwise noted.

1. Sew (1) 1" x 5 ½" Fabric C strip to each side of (1) 5 ½" Fabric A square. Sew (1) 1" x 6 ½" Fabric C strip to the top and to the bottom of the Fabric A square to make (1) 6 ½" Unit 1 square (Fig. 1). Repeat to make (4) Unit 1 squares total.

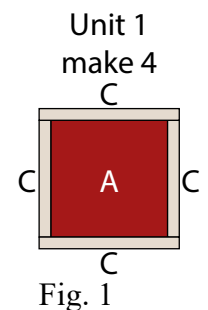


Fig. 1

2. Repeat Step 1 and refer to Figures 2-3 for fabric identification and placement to make (4) Unit 2 squares and (4) Unit 3 squares.

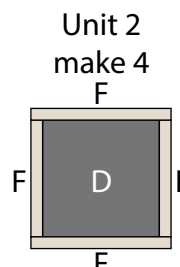


Fig. 2

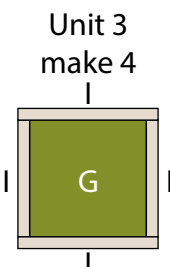


Fig. 3

LET IT SNOW FLANNEL

Quilt 2

Page 4

3. Place (1) 4 ½" Fabric C square on the bottom left corner of (1) 6 ½" Fabric B square, right sides together (Fig. 4). Sew across the diagonal of the smaller square from the upper left corner to the lower right corner (Fig. 4). Flip open the triangle formed and press. Trim away the excess fabric from behind the triangle ¼" away from the sewn seam (Fig. 5).

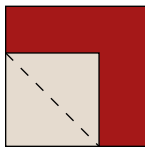


Fig. 4

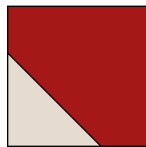


Fig. 5

4. Follow Figure 6 for the seam direction to add a 4 ½" Fabric C square to the upper left and upper right corners of the 6 ½" Fabric B square to make (1) Unit 4 square (Fig. 7).

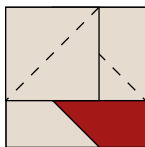


Fig. 6

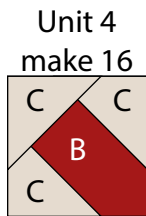


Fig. 7

5. Repeat Steps 3-4 to make (16) Unit 4 squares total.

Unit 4
make 16

6. Repeat Steps 3-4 and refer to Figures 8-9 for fabric identification, placement and seam direction to make (16) Unit 5 squares and (16) Unit 6 squares.

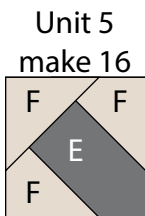


Fig. 8

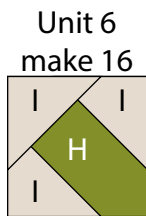


Fig. 9

7. Place (1) 2 ½" Fabric C square on the bottom left corner of (1) 3 ¼" x 6 ½" Fabric B strip, right sides together (Fig. 10). Sew across the diagonal of the small square from the upper left corner to the lower right corner (Fig. 10). Flip open the triangle formed and press. Trim away the excess fabric from behind the triangle ¼" away from the sewn seam (Fig. 11).



Fig. 10



Fig. 11

8. Follow Figure 12 for the seam direction to add a 2 ½" Fabric C square to the upper right corner of the 3 ¼" x 6 ½" Fabric B strip to make (1) Unit 7 strip (Fig. 13).



Fig. 12

Unit 7
make 16



Fig. 13

9. Repeat Steps 7-8 to make (16) Unit 7 strips total.

10. Repeat Steps 7-8 and refer to Figures 14-18 for fabric identification, placement and seam direction to make the indicated number of unit strips for Unit 8 through Unit 12.

Unit 8
make 16

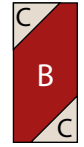


Fig. 14

Unit 9
make 16



Fig. 15

Unit 10
make 16



Fig. 16

Unit 11
make 16



Fig. 17

Unit 12
make 16

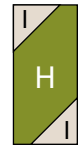


Fig. 18

11. Sew together (1) Unit 7 strip, (1) 1" x 6 ½" Fabric C strip and (1) Unit 8 strip, lengthwise and in that order from left to right, to make (1) 6 ½" Unit 13 square (Fig. 19). Repeat to make (16) Unit 13 squares total.

Unit 13
make 16

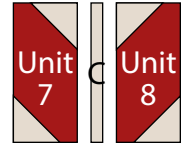


Fig. 19

12. Repeat Step 11 and refer to Figures 20-21 for component identification, placement and orientation to make (16) Unit 14 squares and (16) Unit 15 squares.

Unit 14
make 16

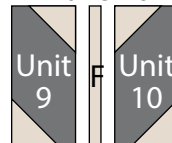


Fig. 20

Unit 15
make 16

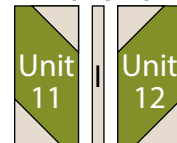


Fig. 21

13. Sew (1) Unit 4 square to each side of (1) Unit 13 square to make the top row. Repeat to make the bottom row. Sew (1) Unit 13 square to each side of (1) Unit 1 square to make the middle row. Sew the (3) rows together lengthwise to make (1) 18 ½" Block One square (Fig. 22). Repeat to make (4) Block One squares total.

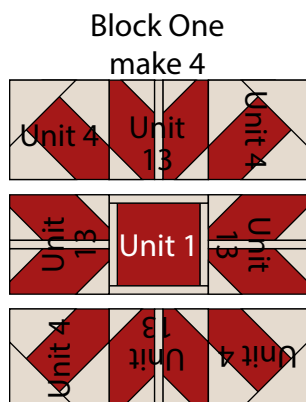


Fig. 22

14. Repeat Step 13 and refer to Figures 23-24 for component identification, placement and orientation to make (4) Block Two squares and (4) Block Three squares.

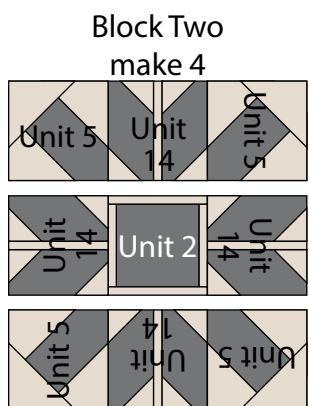


Fig. 23

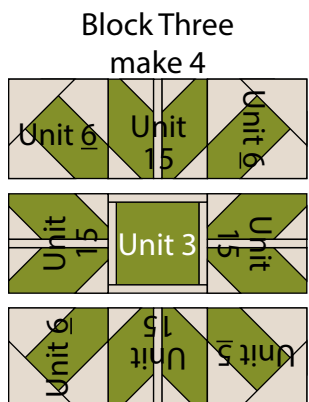


Fig. 24

15. Sew together (1) Block One square, (1) 1 ½" x 18 ½" Fabric J strip, (1) Block Two square, (1) 1 ½" x 18 ½" Fabric J strip and (1) Block Three square, in that order from left to right, to make Row One (Fig. 25). Repeat to make Row Four.

16. Sew together (1) Block Three square, (1) 1 ½" x 18 ½" Fabric J strip, (1) Block One square, (1) 1 ½" x 18 ½" Fabric J strip and (1) Block Two square, in that order from left to right, to make Row Two (Fig. 25).

17. Sew together (1) Block Two square, (1) 1 ½" x 18 ½" Fabric J strip, (1) Block Three square, (1) 1 ½" x 18 ½" Fabric J strip and (1) Block One square, in that order from left to right, to make Row Three (Fig. 25).

18. Sew together the (4) Rows from Steps 15-17 in numerical order and (3) 1 ½" x 56 ½" Fabric J strips, lengthwise and alternating them from top to bottom, to make the 56 ½" x 75 ½" Center Block (Fig. 25).

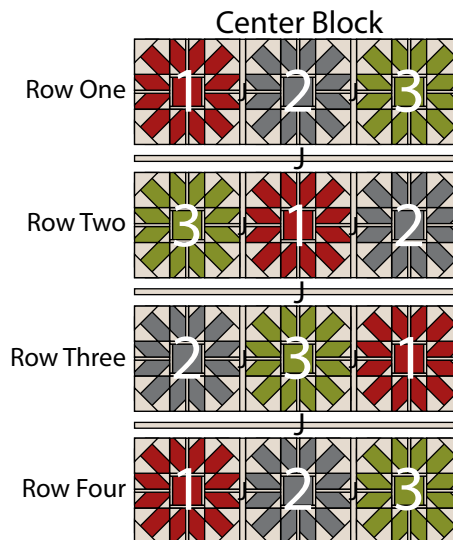


Fig. 25

Quilt Top Assembly

(Follow the Quilt Layout while assembling the quilt top.)

19. Sew (1) 3 ½" x 75 ½" Fabric J strip to each side of the Center Block. Sew (1) 3 ½" x 62 ½" Fabric J strip to the top and to the bottom of the Center Block to make the quilt top.

20. Layer and quilt as desired.

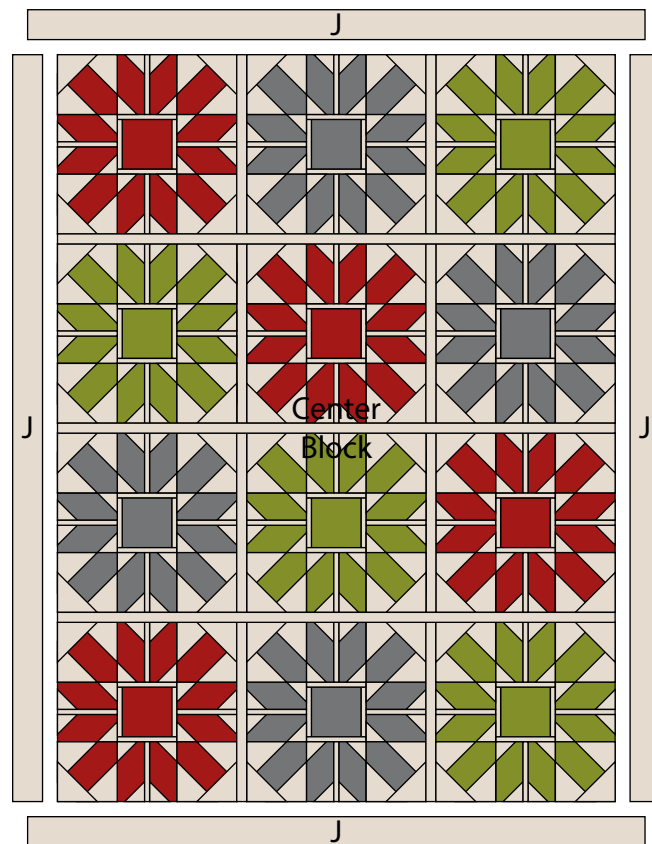
21. Sew the (8) 2 ½" x WOF Fabric K strips together, end to end with 45-degree seams, to make the binding. Fold this long strip in half lengthwise with wrong sides together and press.

22. Bind as desired.

LET IT SNOW FLANNEL

Quilt 2

Page 6



Quilt Layout

Every effort has been made to ensure that all projects are error free. All the information is presented in good faith, however no warranty can be given nor results guaranteed as we have no control over the execution of instructions. Therefore, we assume no responsibility for the use of this information or damages that may occur as a result. When errors are brought to our attention, we make every effort to correct and post a revision as soon as possible. Please make sure to check www.henryglassfabrics.net for pattern updates prior to starting the project. We also recommend that you test the project prior to cutting for kits. Finally, all free projects are intended to remain free to you and are not for resale.

©2021 Henry Glass & Co., Inc.