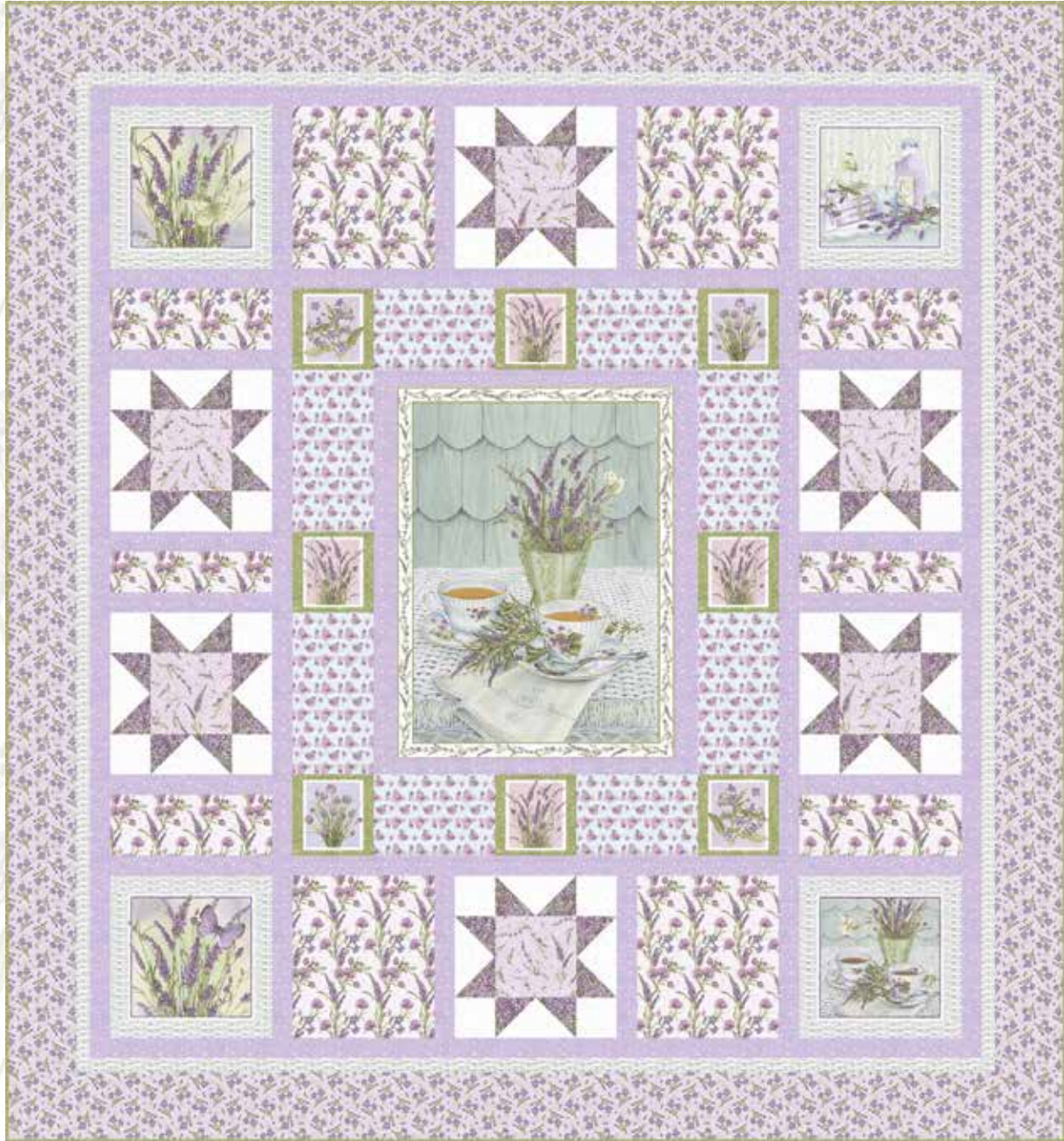


LAVENDER GARDEN

• A Free Project Sheet •
• NOT FOR RESALE •


By Jane Shasky



Quilt Design by Heidi Pridemore

Quilt 1

Skill Level: Advanced Beginner

 Henry Glass & Co., Inc.



facebook

Finished Quilt Size: 78" x 84"
49 West 37th Street, New York, NY 10018
tel: 212-686-5194 fax: 212-532-3525
Toll Free: 800-294-9495
www.henryglassfabrics.net

Please check our website for pattern updates before starting this project.

LAVENDER GARDEN Quilt 1

Fabrics in the Collection



Patchwork
Lavender – 9871-57



Tossed Lavender Sprigs
Lavender – 9872-56



Packed Lavender
Lavender – 9873-56



Lavender Vine
Lavender – 9874-56



Small Vine
Lavender – 9875-55



Small Vine
Green – 9875-66



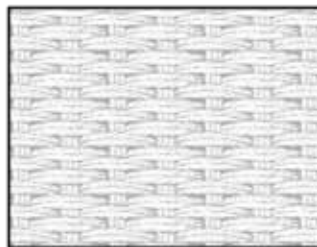
Tossed Butterflies
Green – 9876-65



Tossed Butterflies
Blue – 9876-75



Tossed Star Flower
Multi – 9877-57



Basket Weave
White – 9878-01

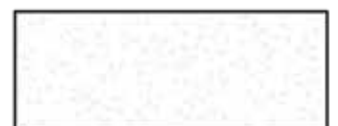


10in x 10in Blocks
Multi – 9879-56



Panel 24in x 44in
Multi – 9880P-15

Select Fabric
from Folio Basics



White on White
7755-01

Materials

1 panel	Panel 24in x 44in - Multi (A)	9880P-15
2/3 yard	10in x 10in Blocks - Multi (B)	9879-56
1 1/2 yards	Small Vine - Lavender (C)	9875-55
1 yard	Small Vine - Green (D)	9875-66*
2/3 yard	Tossed Butterflies - Blue (E)	9876-75
3/4 yard	Basket Weave - White (F)	9878-01
1 1/8 yards	Lavender Vine - Lavender (G)	9874-56
1/4 yard	Tossed Lavender Sprigs - Lavender (H)	9872-56
1/2 yard	Packed Lavender - Lavender (I)	9873-56
2/3 yard	Folio Basics - White on White (J)	7755-01
1 3/8 yards	Tossed Star Flower - Multi (K)	9877-57
7 3/4 yards	Patchwork - Lavender (Backing)	9871-57

*Includes binding

Cutting Instructions

Please note: All strips are cut across the width of fabric (WOF) from selvage to selvage unless otherwise noted.

From the Panel 24in x 44in - Multi (A):

- Fussy cut (1) 21" x 28" rectangle, centered on the panel.

From the 10in x 10in Blocks - Multi (B), fussy cut:

- (8) 5" x 5 3/4" rectangles, each centered on a small block.
- (4) 10" squares, each centered on a large block.

From the Small Vine - Lavender (C), cut:

- (2) 3" x 28" WOF strips.
- (2) 2 1/2" x 26" WOF strips.
- (2) 2" x 42 1/2" WOF strips, piece as needed.
- (2) 2" x 39 1/2" WOF strips.
- (4) 2" x WOF strips. Sew the strips together end to end with diagonal seams and cut (2) 2" x 69 1/2" strips.
- (4) 2" x WOF strips. Sew the strips together end to end with diagonal seams and cut (2) 2" x 66 1/2" strips.
- (7) 2" x WOF strips. Sub-cut (20) 2" x 12 1/2" strips.

From the Small Vine - Green (D), cut:

- (3) 2" x WOF strips. Sub-cut (16) 2" x 5 3/4" strips.
- (4) 1 1/2" x WOF strips. Sub-cut (16) 1 1/2" x 8" strips.
- (8) 2 1/2" x WOF strips for the binding.

From the Tossed Butterflies - Blue (E), cut:

- (2) 6 1/2" x WOF strips. Sub-cut (4) 6 1/2" x 12 1/2" strips.
- (1) 6 1/2" x WOF strip. Sub-cut (4) 6 1/2" x 9 1/2" strips.

From the Basket Weave - White (F), cut:

- (2) 2 1/2" x WOF strips. Sub-cut (8) 2 1/2" x 10" strips.
- (3) 2 1/2" x WOF strips. Sub-cut (8) 2 1/2" x 14" strips.
- (4) 1 1/2" x WOF strips. Sew the strips together end to end with diagonal seams and cut (2) 1 1/2" x 72 1/2" strips.
- (4) 1 1/2" x WOF strips. Sew the strips together end to end with diagonal seams and cut (2) 1 1/2" x 68 1/2" strips.

From the Lavender Vine - Lavender (G), cut:

- (2) 11" x WOF strips. Sub-cut (4) 11" x 12 1/2" strips.
- (2) 5" x WOF strips. Sub-cut (4) 5" x 12 1/2" strips.
- (1) 3 1/2" x WOF strip. Sub-cut (2) 3 1/2" x 12 1/2" strips.

From the Tossed Lavender Sprigs - Lavender (H), cut:

- (1) 6 1/2" x WOF strip. Sub-cut (6) 6 1/2" squares.

From the Packed Lavender - Lavender (I), cut:

- (4) 3 1/2" x WOF strips. Sub-cut (48) 3 1/2" squares.

From the Folio Basics - White on White (J), cut:

- (2) 3 1/2" x WOF strips. Sub-cut (24) 3 1/2" squares.
- (4) 3 1/2" x WOF strips. Sub-cut (24) 3 1/2" x 6 1/2" strips.

From the Tossed Star Flower - Multi (K), cut:

- (4) 5 1/2" x WOF strips. Sew the strips together end to end with diagonal seams and cut (2) 5 1/2" x 74 1/2" strips.
- (4) 5 1/2" x WOF strips. Sew the strips together end to end with diagonal seams and cut (2) 5 1/2" x 78 1/2" strips.

From the Patchwork - Lavender (Backing), cut:

- (3) 92" x WOF strips for the backing. Sew the strips together and trim to make the 86" x 92" back.

Block Assembly

Note: The arrows in figures represent the fabric print direction. Pay attention to the fabric and unit orientations when assembling the various components. Use a 1/4" seam allowance with right sides together (RST) unless otherwise noted.

1. Sew (1) 3" x 28" Fabric C strip to each side of the 21" x 28" Fabric A rectangle. Sew (1) 2 1/2" x 26" Fabric C strip to the top and to the bottom of the Fabric A rectangle to make the Center Block (Fig. 1). **Trim the block to measure 24 1/2" x 30 1/2"**.

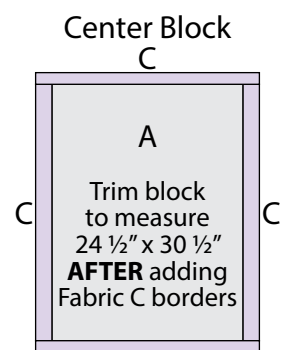


Fig. 1 C

2. Sew (1) 2" x 5 3/4" Fabric D strip to each side of (1) 5" x 5 3/4" Fabric B block. Sew (1) 1 1/2" x 8" Fabric D strip to the top and to the bottom of the Fabric B block to make (1) Block One square (Fig. 2). **Trim the block to measure 6 1/2" x 6 1/2"**.

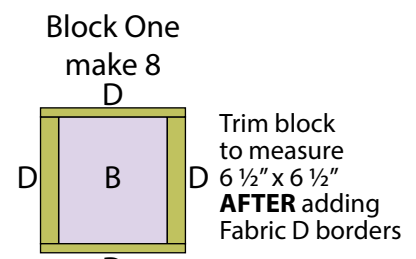


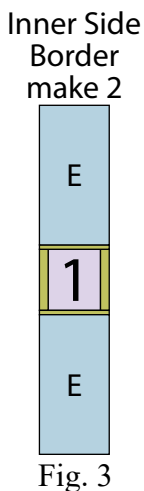
Fig. 2

Repeat to make (8) Block One squares total.

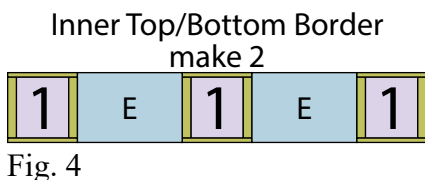
LAVENDER GARDEN

Quilt 1

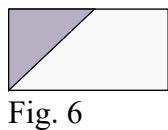
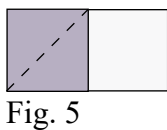
3. Sew (1) 6 1/2" x 12 1/2" Fabric E strip to the top and to the bottom of (1) Block One square to make (1) Inner Side Border (Fig. 3). Repeat to make a second Inner Side Border.



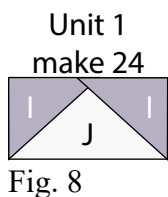
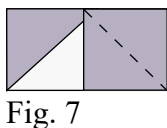
4. Sew together (3) Block One squares and (2) 6 1/2" x 9 1/2" Fabric E strips, end to end and alternating them from left to right, to make the Inner Top Border (Fig. 4). Repeat to make the Inner Bottom Border.



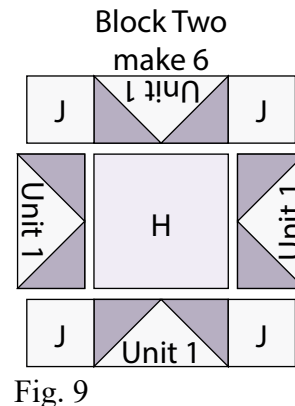
5. Place (1) 3 1/2" Fabric I square on the left side of (1) 3 1/2" x 6 1/2" Fabric J strip, right sides together (Fig. 5). Sew across the diagonal of the square from the upper right corner to the lower left corner (Fig. 5). Flip open the triangle formed and press. Trim away the excess fabric from behind the triangle, leaving a 1/4" seam allowance (Fig. 6).



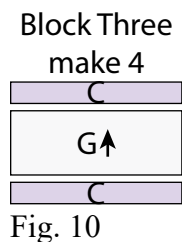
6. Place another 3 1/2" Fabric I square on the right side of the 3 1/2" x 6 1/2" Fabric J strip, right sides together (Fig. 7). Sew across the diagonal of the square from the upper left corner to the lower right corner (Fig. 7). Flip open the triangle formed and press. Trim away the excess fabric from behind the triangle, leaving a 1/4" seam allowance to make (1) Unit 1 strip (Fig. 8).



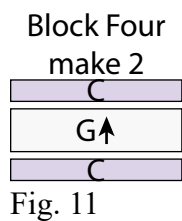
8. Sew (1) 3 1/2" Fabric J square to each end of (1) Unit 1 strip to make the top row. Repeat to make the bottom row. Sew (1) Unit 1 strip to each side of (1) 6 1/2" Fabric H square to make the middle row. Sew the (3) rows together lengthwise to make (1) 12 1/2" Block Two square (Fig. 9). Repeat to make (6) block Two squares total.



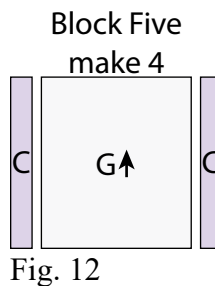
9. Sew (1) 2" x 12 1/2" Fabric C strip to the top and to the bottom of (1) 5" x 12 1/2" Fabric G strip lengthwise to make (1) 8" x 12 1/2" Block Three rectangle (Fig. 10). Repeat to make (4) Block Three rectangles total.



10. Sew (1) 2" x 12 1/2" Fabric C strip to the top and to the bottom of (1) 3 1/2" x 12 1/2" Fabric G strip lengthwise to make (1) 6 1/2" x 12 1/2" Block Four rectangle (Fig. 11). Repeat to make a second Block Four rectangle.



11. Sew (1) 2" x 12 1/2" Fabric C strip to each side of (1) 11" x 12 1/2" Fabric G strip to make (1) 14" x 12 1/2" Block Five rectangle (Fig. 12). Repeat to make (4) Block Five rectangles total.



12. Sew (1) 2 ½" x 10" Fabric F strip to each side of (1) 10" Fabric B square. Sew (1) 2 ½" x 14" Fabric F strip to the top and to the bottom of the Fabric B square to make (1) Block Six square (Fig. 13). **Trim the block to measure 12 ½" x 12 ½"**. Repeat to make (4) Block Six squares total.

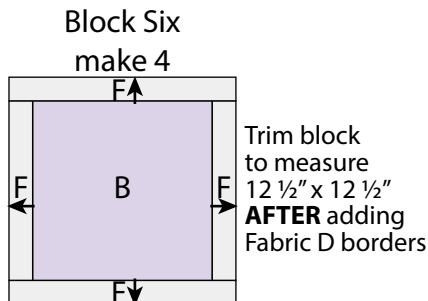


Fig. 13

13. Sew together (1) Block Three rectangle, (1) Block Two square, (1) Block Four rectangle, (1) Block Two square and (1) Block Three rectangle, in that order from top to bottom, to make (1) Outer Side Border (Fig. 14). Repeat to make a second Outer Side Border.

Outer Side Border make 2

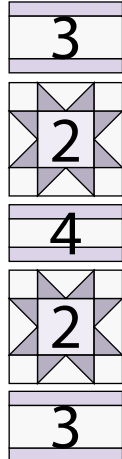


Fig. 14

14. Sew together (1) Block Six square, (1) Block Five rectangle, (1) Block Two square, (1) Block Five rectangle and (1) Block Six square, in that order from left to right, to make the Outer Top Border (Fig. 15). Repeat to make the Outer Bottom Border.

Outer Top/Bottom Border make 2



Fig. 15

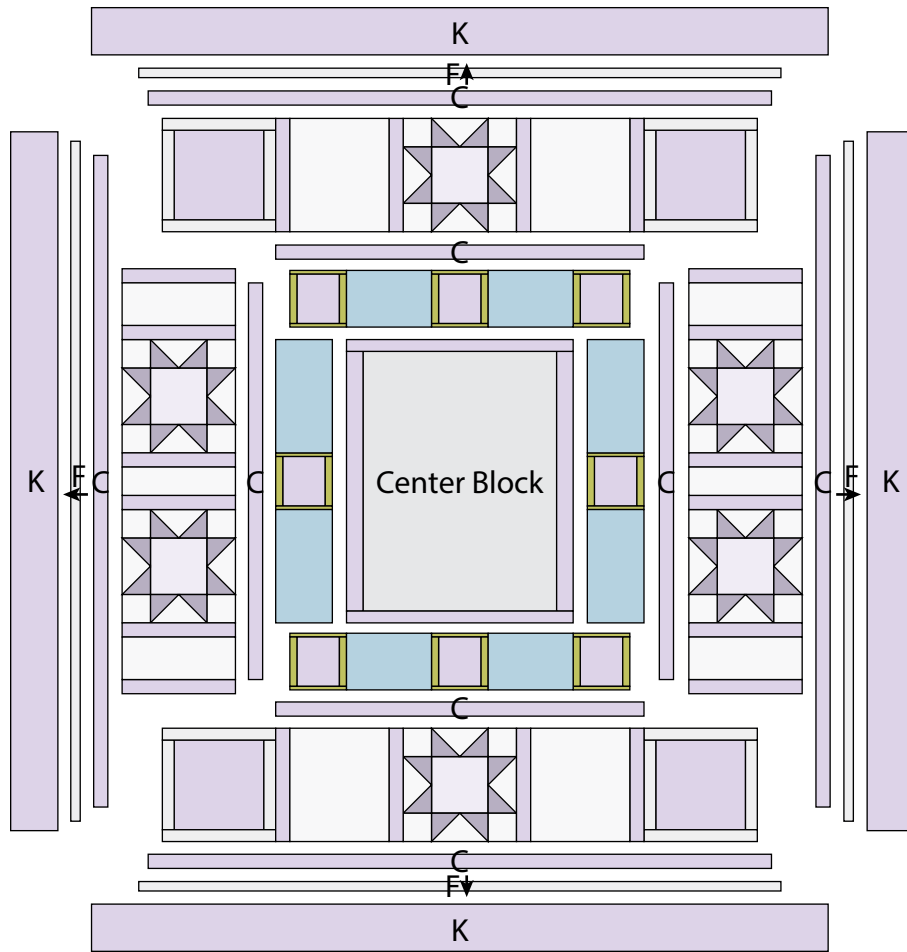
Quilt Top Assembly

(Follow the Quilt Layout while assembling the quilt top.)

15. Sew (1) Inner Side Border to each side of the Center Block.
16. Sew the Inner Top Border and the Inner Bottom Border to the top and to the bottom of the Center Block.
17. Sew (1) 2" x 42 ½" Fabric C strip to each side of the Center Block. Sew (1) 2" x 39 ½" Fabric C strip to the top and to the bottom of the Center Block.
18. Sew (1) Outer Side Border to each side of the Center Block.
19. Sew the Outer Top Border and Outer Bottom Border to the top and to the bottom of the Center Block.
20. Sew (1) 2" x 69 ½" Fabric C strip to each side of the Center Block. Sew (1) 2" x 66 ½" Fabric C strip to the top and to the bottom of the Center Block.
21. Sew (1) 1 ½" x 72 ½" Fabric F strip to each side of the Center Block. Sew (1) 1 ½" x 68 ½" Fabric F strip to the top and to the bottom of the Center Block.
22. Sew (1) 5 ½" x 74 ½" Fabric K strip to each side of the Center Block. Sew (1) 5 ½" x 78 ½" Fabric K strip to the top and to the bottom of the Center Block to make the quilt top.
23. Layer and quilt as desired.
24. Sew the (8) 2 ½" x WOF Fabric D strips together, end to end with 45-degree seams, to make the binding. Fold this long strip in half lengthwise with wrong sides together and press.
25. Bind as desired.

LAVENDER GARDEN

Quilt 1



Quilt Layout

Every effort has been made to ensure that all projects are error free. All the information is presented in good faith, however no warranty can be given nor results guaranteed as we have no control over the execution of instructions. Therefore, we assume no responsibility for the use of this information or damages that may occur as a result. When errors are brought to our attention, we make every effort to correct and post a revision as soon as possible. Please make sure to check www.henryglassfabrics.net for pattern updates prior to starting the project. We also recommend that you test the project prior to cutting for kits. Finally, all free projects are intended to remain free to you and are not for resale.